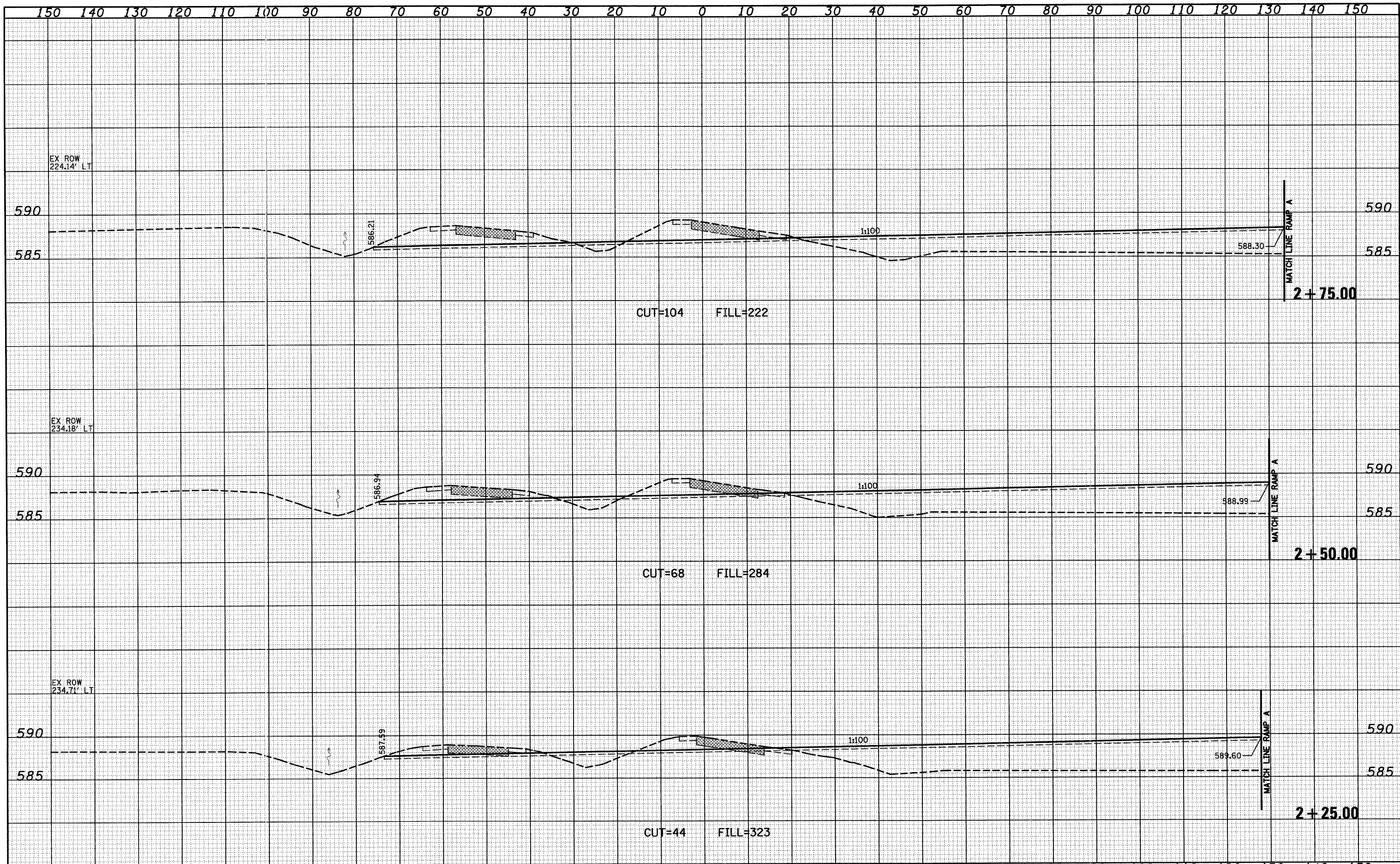


DATE	
BY	
FINAL SURVEY	SURVEYED
NOTE BOOK	PLOTTED
NO.	TEMPLATE
	AREAS CHECKED
	AREAS CHECKED

DATE	
BY	
ORIGINAL SURVEY	SURVEYED
NOTE BOOK	PLOTTED
NO.	TEMPLATE
	AREAS CHECKED
	AREAS CHECKED



FILE NAME =	USER NAME = silvia	DESIGNED - JWS	REVISED -	STATE OF ILLINOIS DEPARTMENT OF TRANSPORTATION	CROSS SECTIONS, OUTFIELD GRADING, FAYETTE AVE. -- OUTSIDE RAMP A	F.A. RTE.	SECTION	COUNTY	TOTAL SHEETS	SHEET NO.
30\Projects\03-0002\25-70\dyh\fig\grd\250710.dgn		DRAWN - LEC	REVISED -			57/70	(25-3)I-6	EFFINGHAM	839	474
		CHECKED - BRM	REVISED -			CONTRACT NO. 74293				
		DATE - 11-05-07	REVISED -			FED. ROAD DIST. NO. ILLINOIS FED. AID PROJECT				
PLOT SCALE = 20,0000' / IN.				SCALE: 1"=10'		SHEET NO. 4 OF 12 SHEETS		STA. 2+25.00 TO STA. 2+75.00		
PLOT DATE = 5/17/2010										