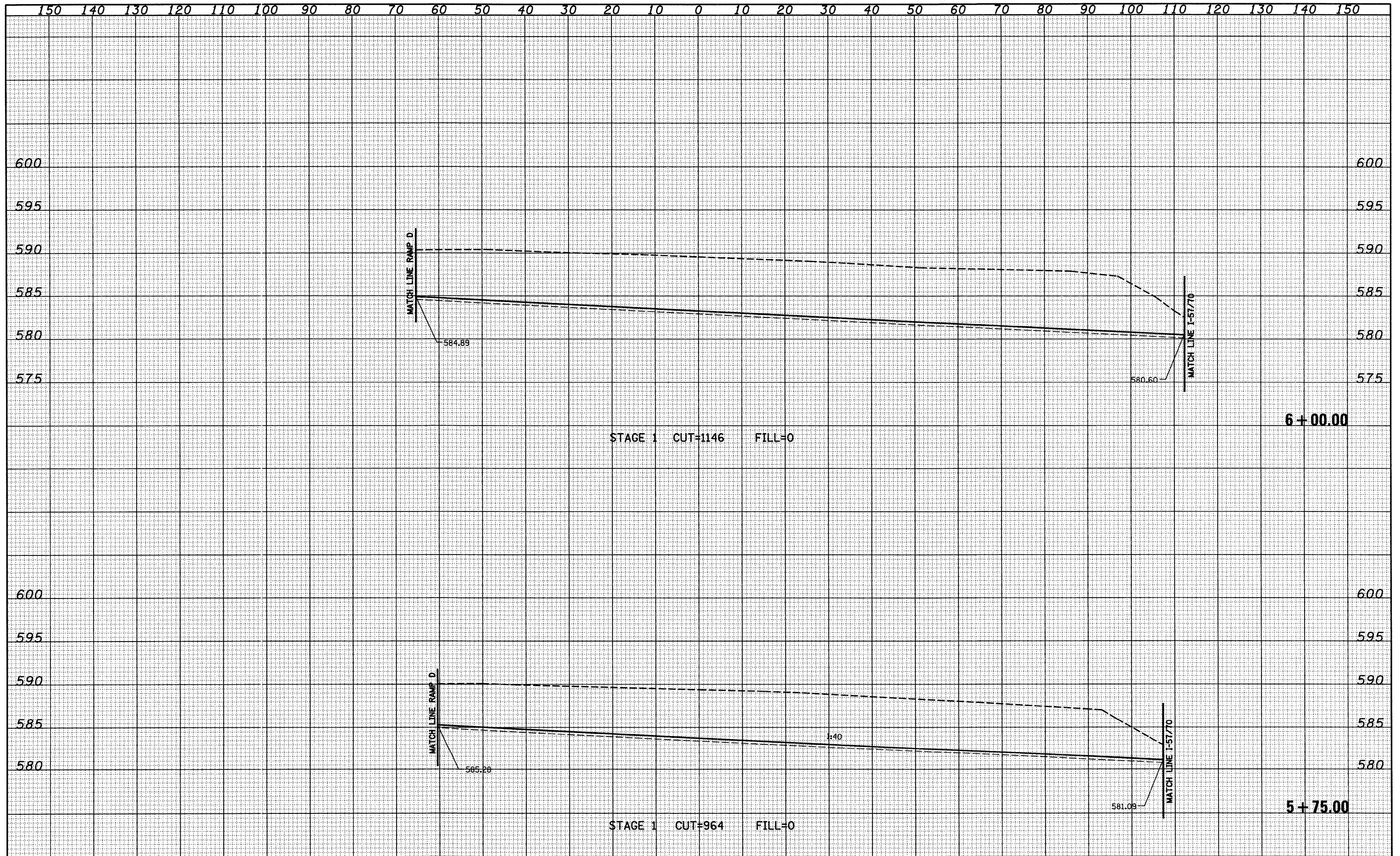


DATE	
BY	
SURVEYED	
TEMPLATE	
NOTE BOOK	
AREAS CHECKED	
NO.	

DATE	
BY	
SURVEYED	
TEMPLATE	
NOTE BOOK	
AREAS CHECKED	
NO.	



FILE NAME =	USER NAME = 11nda	DESIGNED - JWS	REVISED -	STATE OF ILLINOIS DEPARTMENT OF TRANSPORTATION	CROSS SECTIONS, INFIELD GRADING, FAYETTE AVE. - RAMP D	F.A. RTE.	SECTION	COUNTY	TOTAL SHEETS	SHEET NO.
S:\Project\103\1007\57-70\Inp\Fayette\crossif090.dgn	PLOT SCALE = 20.0000' / IN.	DRAWN - LEC	REVISED -			57/70	(25-3)-6	EFFINGHAM	839	529
PLOT DATE = 6/24/2010	DATE - 11-05-07	CHECKED - BRM	REVISED -			CONTRACT NO. 74293		ILLINOIS FED. AID PROJECT		
		DATE - 11-05-07	REVISED -			SCALE: 1"=10'	SHEET NO. 9 OF 9 SHEETS	STA. 5+75.00	TO STA. 6+00.00	