

F.A.I. RTE.	SECTION	COUNTY	TOTAL SHEETS	SHEET NO.
55	60-3RS-1, (60-(3HB, 3HB-1))	MADISON	123	1
ILLINOIS			CONTRACT NO. 76601	

* 123 + 4 = 127
+ 1

128

D-98-056-02

INDEX OF SHEETS

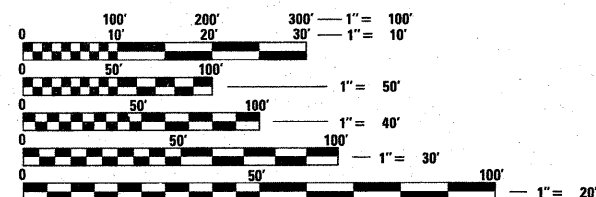
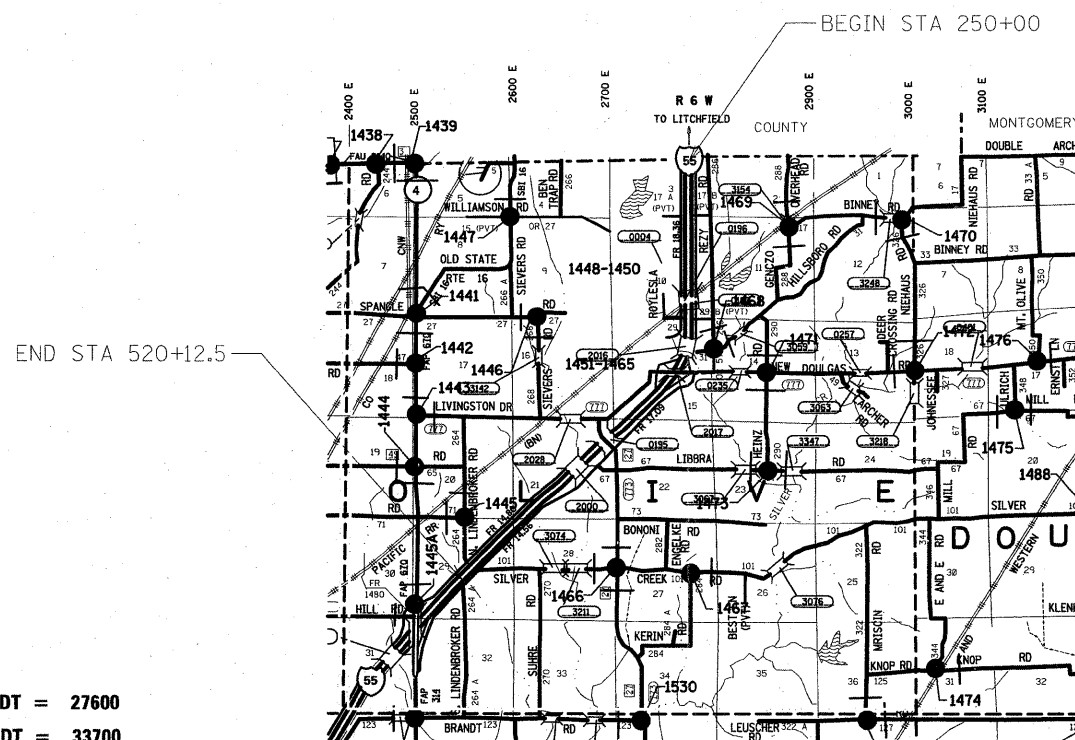
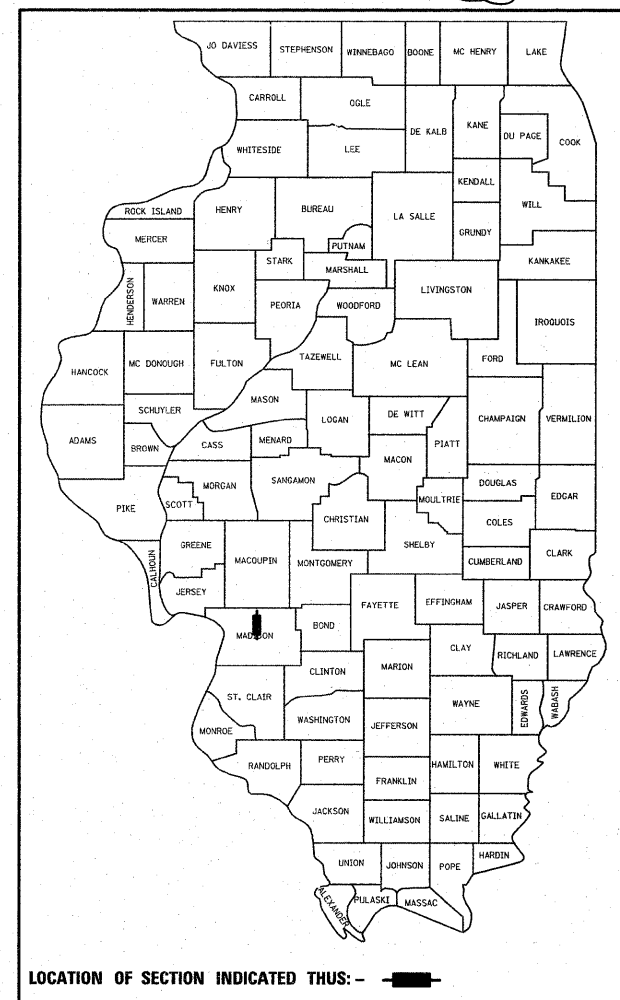
- 1 COVER SHEET, INDEX, ADT
- 2 GENERAL NOTES, HIGHWAY STANDARDS, COMMITMENTS
- 3 - 6 SUMMARY OF QUANTITIES
- 7 - 11 TYPICAL SECTIONS
- 12 - 15 SCHEDULES OF QUANTITIES
- 16 - 19D, STAGES OF CONSTRUCTION
- 20 - 46 PLAN SHEETS
- 47 - 73 PAVEMENT MARKING SHEETS
- 74 - 79 PAVING DETAILS
- 80 - 82 PLAN DETAILS
- 83 - 119 BRIDGE PLANS
- 120 - 123 BRIDGE PAINTING PLANS

STATE OF ILLINOIS
DEPARTMENT OF TRANSPORTATION
DIVISION OF HIGHWAYS

PROPOSED
HIGHWAY PLANS

FAI ROUTE 55 (I-55)
SECTION 60-3RS-1, 60-(3HB, 3HB-1)
PROJECT: ACNHI-055-1(084)034
INTERSTATE RESURFACING AND BRIDGE REPAIR
MADISON COUNTY

C-98-106-10



FULL SIZE PLANS HAVE BEEN PREPARED USING STANDARD ENGINEERING SCALES. REDUCED SIZED PLANS WILL NOT CONFORM TO STANDARD SCALES. IN MAKING MEASUREMENTS ON REDUCED PLANS, THE ABOVE SCALES MAY BE USED.

J.U.I.E.
JOINT UTILITY LOCATION INFORMATION FOR EXCAVATION
1-800-892-0123
OR 811

2010 ADT = 27600
2030 ADT = 33700
SU = 3.4%, MU = 24.7%

PROJECT ENGINEER PATTI LEBEAU (618)346-3179
PROJECT MANAGER CHERYL KEPLAR (618)346-3186

GROSS LENGTH = 27012.5 FT. = 5.116 MILE
NET LENGTH = 27012.5 FT. = 5.116 MILE

CONTRACT NO. 76601

STATE OF ILLINOIS
DEPARTMENT OF TRANSPORTATION
DIVISION OF HIGHWAYS

SUBMITTED June 24 2010
[Signature]
DEPUTY DIRECTOR OF HIGHWAYS, REGION 5 ENGINEER

August 13 2010
[Signature]
ENGINEER OF DESIGN AND ENVIRONMENT

August 13 2010
[Signature]
DIRECTOR OF HIGHWAYS, CHIEF ENGINEER

PRINTED BY THE AUTHORITY
OF THE STATE OF ILLINOIS

ILLINOIS DEPARTMENT OF TRANSPORTATION
SUMMARY OF QUANTITIES

TOTAL
 QUANTITIES

I000	SFTY-2A	SFTY-2A	SFTY-2A	SFTY-2A
90% FED	90% FED	90% FED	90% FED	90% FED
10% STATE	10% STATE	10% STATE	10% STATE	10% STATE
ROADWAY	SN 060-0195 ALHAMBRA RD	SN 060-0198 NEW DOUGLAS	SN 060-0196 I-55 OVER RR	SN 060-0197 I-55 OVER RR

CODE NO	ITEM	UNIT	TOTAL QUANTITIES	ROADWAY	SN 060-0195 ALHAMBRA RD	SN 060-0198 NEW DOUGLAS	SN 060-0196 I-55 OVER RR	SN 060-0197 I-55 OVER RR
52100010	ELASTOMERIC BEARING ASSEMBLY, TYPE I	EACH	47		5	18	12	12
52100020	ELASTOMERIC BEARING ASSEMBLY, TYPE II	EACH	5		5			
52100520	ANCHOR BOLTS, 1"	EACH	104		20	36	24	24
58700300	CONCRETE SEALER	SQ FT	1196		150	432	307	307
60100060	CONCRETE HEADWALL FOR PIPE DRAINS	EACH	236	236				
60100078	SHOULDER REMOVAL AND REPLACEMENT 12 1/2"	FOOT	100425	100425				
60100945	PIPE DRAINS 12"	FOOT	12			6	6	
60107600	PIPE UNDERDRAINS 4"	FOOT	107424	107424				
60108100	PIPE UNDERDRAINS 4" (SPECIAL)	FOOT	6844	6844				
* 63000001	STEEL PLATE BEAM GUARD RAIL, TYPE A, 6 FOOT POSTS	FOOT	4650	4650				
* 63100045	TRAFFIC BARRIER TERMINAL, TYPE 2	EACH	8	8				
* 63100085	TRAFFIC BARRIER TERMINAL, TYPE 6	EACH	4	4				
* 63100089	TRAFFIC BARRIER TERMINAL, TYPE 6B	EACH	8	8				
* 63100167	TRAFFIC BARRIER TERMINAL, TYPE 1 (SPECIAL), TANGENT	EACH	20	20				
* 63400105	GUARD POSTS	EACH	7	7				
* 63500105	DELINEATORS	EACH	312	312				
63500120	DELINEATOR REMOVAL	EACH	312	312				
64200105	SHOULDER RUMBLE STRIPS	FOOT	103961	103961				
66500105	WOVEN WIRE FENCE, 4'	FOOT	1000	1000				
66502300	WOVEN WIRE FENCE REMOVAL	FOOT	1000	1000				
67000400	ENGINEER'S FIELD OFFICE, TYPE A	CAL MO	24	24				
70100700	TEMPORARY RUMBLE STRIP	EACH	12			12		
67100100	MOBILIZATION	L SUM	1	1				
70100207	TRAFFIC CONTROL AND PROTECTION, STANDARD 701402	EACH	6	4			1	1
70100420	TRAFFIC CONTROL AND PROTECTION, STANDARD 701411	EACH	4	4				
70100700	TRAFFIC CONTROL AND PROTECTION, STANDARD 701406	L SUM	1	1				
70101800	TRAFFIC CONTROL AND PROTECTION, (SPECIAL)	L SUM	1		1			
70106800	CHANGEABLE MESSAGE SIGN	CAL MO	36	36				
70300100	SHORT-TERM PAVEMENT MARKING	FOOT	13176	13176				
70300220	TEMPORARY PAVEMENT MARKING - LINE 4"	FOOT	10295	10295				
70300240	TEMPORARY PAVEMENT MARKING - LINE 6"	FOOT	122018	122018				
70300250	TEMPORARY PAVEMENT MARKING - LINE 8"	FOOT	4099	4099				
70301000	WORK ZONE PAVEMENT MARKING REMOVAL	SQ FT	1464	1464				
70400100	TEMPORARY CONCRETE BARRIER	FOOT	3600	2240			680	680

FILE NAME =	USER NAME = conoverpj	DESIGNED -	REVISED -
76601-sht-plan.dgn	76601-sht-plan.dgn	DRAWN -	REVISED -
PLOT SCALE = 50.0000' / IN.	CHECKED -	DATE -	REVISED -
PLOT DATE = 6/24/2010			

STATE OF ILLINOIS
 DEPARTMENT OF TRANSPORTATION

SUMMARY OF QUANTITIES

SCALE: SHEET NO. 3 OF 4 SHEETS STA. TO STA.

F.A.T. RTE.	SECTION	COUNTY	TOTAL SHEETS	SHEET NO.
55	60-3RS-1,60-13HB,3HB-111	MADISON	123	5
CONTRACT NO. 76601				

Rev. 9-1-10

ILLINOIS FED. AID PROJECT

SUMMARY OF QUANTITIES

CODE NO	ITEM	UNIT	TOTAL QUANTITIES	1000	SFTY-2A	SFTY-2A	SFTY-2A	SFTY-2A				
				90% FED	90% FED	90% FED	90% FED	90% FED				
				10% STATE	10% STATE	10% STATE	10% STATE	10% STATE				
				ROADWAY	SN 060-0195 ALHAMBRA RD	SN 060-0198 NEW DOUGLAS	SN 060-0196 I-55 OVER RR	SN 060-0197 I-55 OVER RR				
70400200	RELOCATE TEMPORARY CONCRETE BARRIER	FOOT	3600	3240								
*72000100	SIGN PANEL - TYPE 1	SQ FT	395	395								
*78000200	THERMOPLASTIC PAVEMENT MARKING - LINE 4"	FOOT	10295	10295								
*78000400	THERMOPLASTIC PAVEMENT MARKING - LINE 6"	FOOT	106496	106496								
*78000500	THERMOPLASTIC PAVEMENT MARKING - LINE 8"	FOOT	4099	4099								
*78001110	PAINT PAVEMENT MARKING - LINE 4"	FOOT	2854	2854								
*78001100	PAINT PAVEMENT MARKING, LETTERS AND SYMBOLS	SQ FT	472	472								
*78004230	PREFORMED PLASTIC PAVEMENT MARKING, TYPE B - INLAID - LINE 6"	FOOT	15522	15522								
*78100100	RAISED REFLECTIVE PAVEMENT MARKER	EACH	1482	1482								
*78100105	RAISED REFLECTIVE PAVEMENT MARKER (BRIDGE)	EACH	8	8								
*78200300	PRISMATIC CURB REFLECTOR	EACH	24	24								
*78200410	GUARDRAIL MARKERS, TYPE A	EACH	89	89								
*78200530	BARRIER WALL MARKERS, TYPE C	EACH	24		8	8	4	4				
*78201000	TERMINAL MARKER-DIRECT APPLIED	EACH	20	20								
78300200	RAISED REFLECTIVE PAVEMENT MARKER REMOVAL	EACH	1490	1490								
*80300110	LOCATING UNDERGROUND CABLE, SPECIAL	EACH	20	20								
Z0012754	STRUCTURAL REPAIR OF CONCRETE (DEPTH EQUAL TO OR LESS THAN 5 INCHES)	SQ FT	561		95	430	18	18				
X0325605	PAVEMENT MARKING GROOVING	SQ FT	472	472								
Z0026346	NIGHTTIME WORK ZONE LIGHTING	L SUM	1	1								
NP X0549200	CLEANING PAVED DITCH	FOOT	1000	1000								
X6320100	GUARDRAIL REMOVAL SPECIAL	FOOT	2339	2339								
X7830074	GROOVING FOR RECESSED PAVEMENT MARKING 7"	FOOT	2042	2042								
*X7800200	PAINT PAVEMENT MARKING CURB	FOOT	115	115								
XZ193500	BRIDGE DECK MICROSILICA CONCRETE OVERLAY 2 1/4"	SQ YD	4064		1062	1546	728	728				
Z0030150	IMPACT ATTENUATORS (NON-REDIRECTIVE), TEST LEVEL 3	EACH	0	4								
Z0006204	BRIDGE DECK HYDRO-SCARIFICATION 1/2"	SQ YD	2608		1062	1546						
Z0030350	IMPACT ATTENUATORS, RELOCATE (NON-REDIRECTIVE), TEST LEVEL 3	EACH	0	4								
Z0006225	BRIDGE DECK HYDRO-SCARIFICATION 2 1/2"	SQ YD	1456				728	728				
Z0016002	DECK SLAB REPAIR (FULL DEPTH, TYPE II)	SQ YD	18		14	4						
Z0040530	PIPE UNDERDRAIN REMOVAL	FOOT	114268	114268								
Z0075310	TIE BARS 3/4"	EACH	28	28								
Z0048865	RAILROAD PROTECTIVE LIABILITY INSURANCE	L SUM	1				0.5	0.5				
Z0016702	DETOUR SIGNING	L SUM	1									
*X7830068	GROOVING FOR RECESSED PAVEMENT MARKING, LETTERS, NUMBERS AND SYMBOLS	SQ FT	472	472								
0 Z0076600	TRAINEES	HOUR	2500	2500								

NP-NON-PARTICIPATING @Y080 *SPECIALTY ITEMS

Rev. 9-1-10 Rev.

FILE NAME =	USER NAME = conoverpj	DESIGNED -	REVISED -
cs:\pw_work\PIWDOT\CONOVERPJ\08128605\d876601-sht-plan.dgn	76601-sht-plan.dgn	DRAWN -	REVISED -
PLOT SCALE = 50.0000' / 1" IN.		CHECKED -	REVISED -
PLOT DATE = 6/24/2010		DATE -	REVISED -

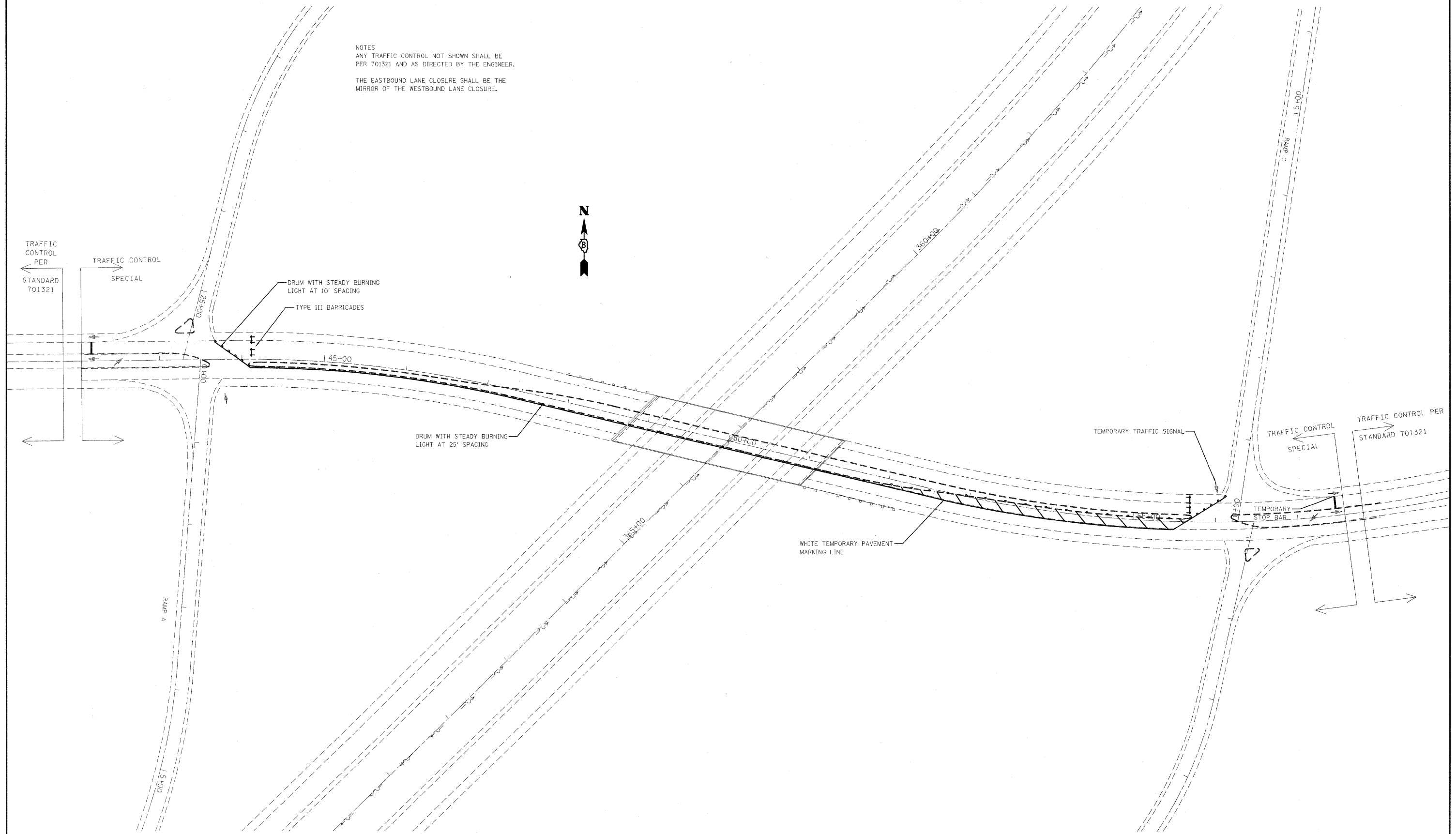
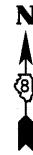
STATE OF ILLINOIS
DEPARTMENT OF TRANSPORTATION

SUMMARY OF QUANTITIES

SCALE: SHEET NO. 4 OF 4 SHEETS STA. TO STA.

F.A.I. RTE.	SECTION	COUNTY	TOTAL SHEETS	SHEET NO.
55	60-3RS-1,60-(3HB,3HB-1)I	MADISON	123	6
CONTRACT NO. 76601				
ILLINOIS FED. AID PROJECT				

NOTES
 ANY TRAFFIC CONTROL NOT SHOWN SHALL BE PER 701321 AND AS DIRECTED BY THE ENGINEER.
 THE EASTBOUND LANE CLOSURE SHALL BE THE MIRROR OF THE WESTBOUND LANE CLOSURE.



Added Sheet 9-1-10

FILE NAME =	USER NAME = bergmd	DESIGNED -	REVISED -	STATE OF ILLINOIS DEPARTMENT OF TRANSPORTATION	TRAFFIC CONTROL SPECIAL	F.A.I. RTE.	SECTION	COUNTY	TOTAL SHEETS	SHEET NO.
o:\pw\work\p\dot\bergmd\00128605\0876681-sht-plan.dgn	11-sht-plan.dgn	DRAWN -	REVISED -			55	60-3RS-1, 60-13HB, 3HB-111	MADISON	123	190
PLOT SCALE = 50.0000' / IN.		CHECKED -	REVISED -			CONTRACT NO. 76601				
PLOT DATE = 8/31/2010		DATE -	REVISED -			FED. ROAD DIST. NO. ILLINOIS FED. AID PROJECT				
				SCALE: _____ SHEET NO. 4 OF 4 SHEETS STA. _____ TO STA. _____						