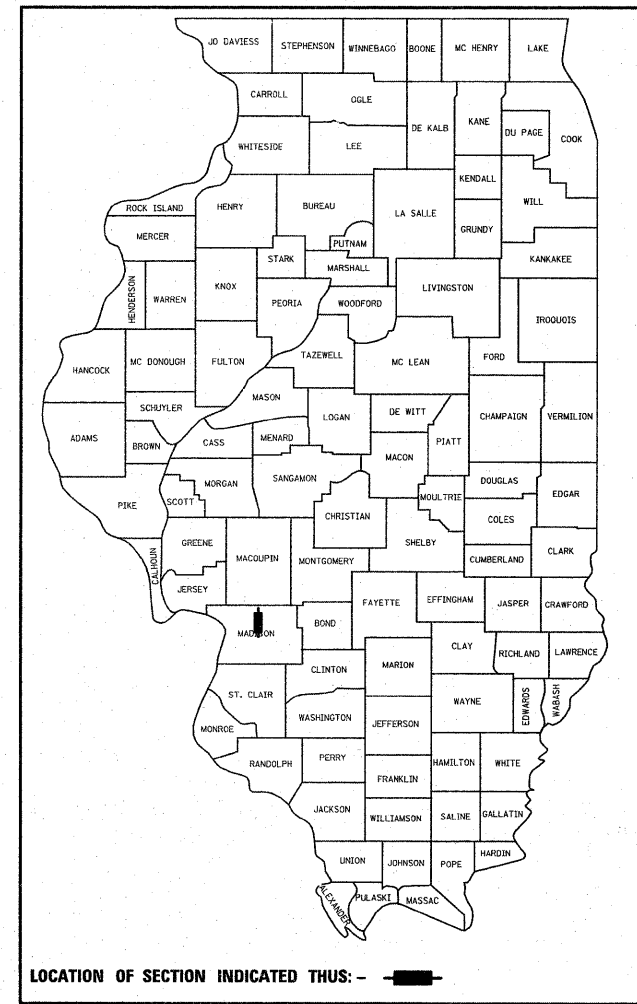


F.A.I. RTE.	SECTION	COUNTY	TOTAL SHEETS	SHEET NO.
55	60-3RS-1, (60-(3HB, 3HB-1))	MADISON	123	1
		ILLINOIS	CONTRACT NO. 76601	

* 123 + 4 = 127

D-98-056-02



LOCATION OF SECTION INDICATED THUS: - [thick line] -

INDEX OF SHEETS

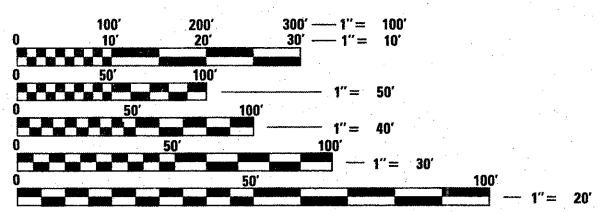
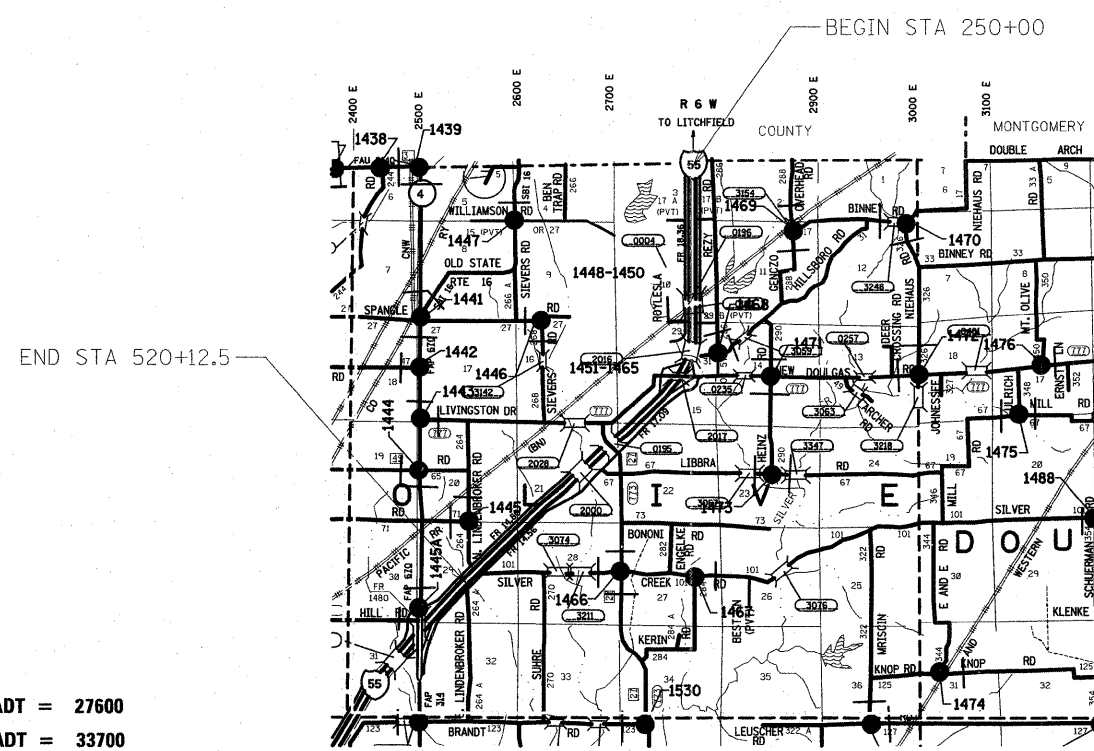
- 1 COVER SHEET, INDEX, ADT
- 2 GENERAL NOTES, HIGHWAY STANDARDS, COMMITMENTS
- 3 - 6 SUMMARY OF QUANTITIES
- 7 - 11 TYPICAL SECTIONS
- 12 - 15 SCHEDULES OF QUANTITIES
- 16 - 19 STAGES OF CONSTRUCTION
- 20 - 46 PLAN SHEETS
- 47 - 73 PAVEMENT MARKING SHEETS
- 74 - 79 PAVING DETAILS
- 80 - 82 PLAN DETAILS
- 83 - 119 BRIDGE PLANS
- 120 - 123 BRIDGE PAINTING PLANS

**STATE OF ILLINOIS
DEPARTMENT OF TRANSPORTATION
DIVISION OF HIGHWAYS**

**PROPOSED
HIGHWAY PLANS**

**FAI ROUTE 55 (I-55)
SECTION 60-3RS-1, 60-(3HB, 3HB-1)
PROJECT: ACNHI-055-1(084)034
INTERSTATE RESURFACING AND BRIDGE REPAIR
MADISON COUNTY**

C-98-106-10



FULL SIZE PLANS HAVE BEEN PREPARED USING STANDARD ENGINEERING SCALES. REDUCED SIZED PLANS WILL NOT CONFORM TO STANDARD SCALES. IN MAKING MEASUREMENTS ON REDUCED PLANS, THE ABOVE SCALES MAY BE USED.

J.U.L.I.E.
JOINT UTILITY LOCATION INFORMATION FOR EXCAVATION
1-800-892-0123
OR 811

2010 ADT = 27600
2030 ADT = 33700
SU = 3.4%, MU = 24.7%

PROJECT ENGINEER PATTI LEBEAU (618)346-3179
PROJECT MANAGER CHERYL KEPLAR (618)346-3186

GROSS LENGTH = 27012.5 FT. = 5.116 MILE
NET LENGTH = 27012.5 FT. = 5.116 MILE

CONTRACT NO. 76601

STATE OF ILLINOIS
DEPARTMENT OF TRANSPORTATION
DIVISION OF HIGHWAYS

SUBMITTED June 24 2010
M. C. Chermi
DEPUTY DIRECTOR OF HIGHWAYS, REGION 5 ENGINEER

August 13 2010
Scott E. Stitt, P.E.
ACTING ENGINEER OF DESIGN AND ENVIRONMENT

August 13 2010
Christine M. Reed, P.E.
DIRECTOR OF HIGHWAYS, CHIEF ENGINEER

**PRINTED BY THE AUTHORITY
OF THE STATE OF ILLINOIS**