

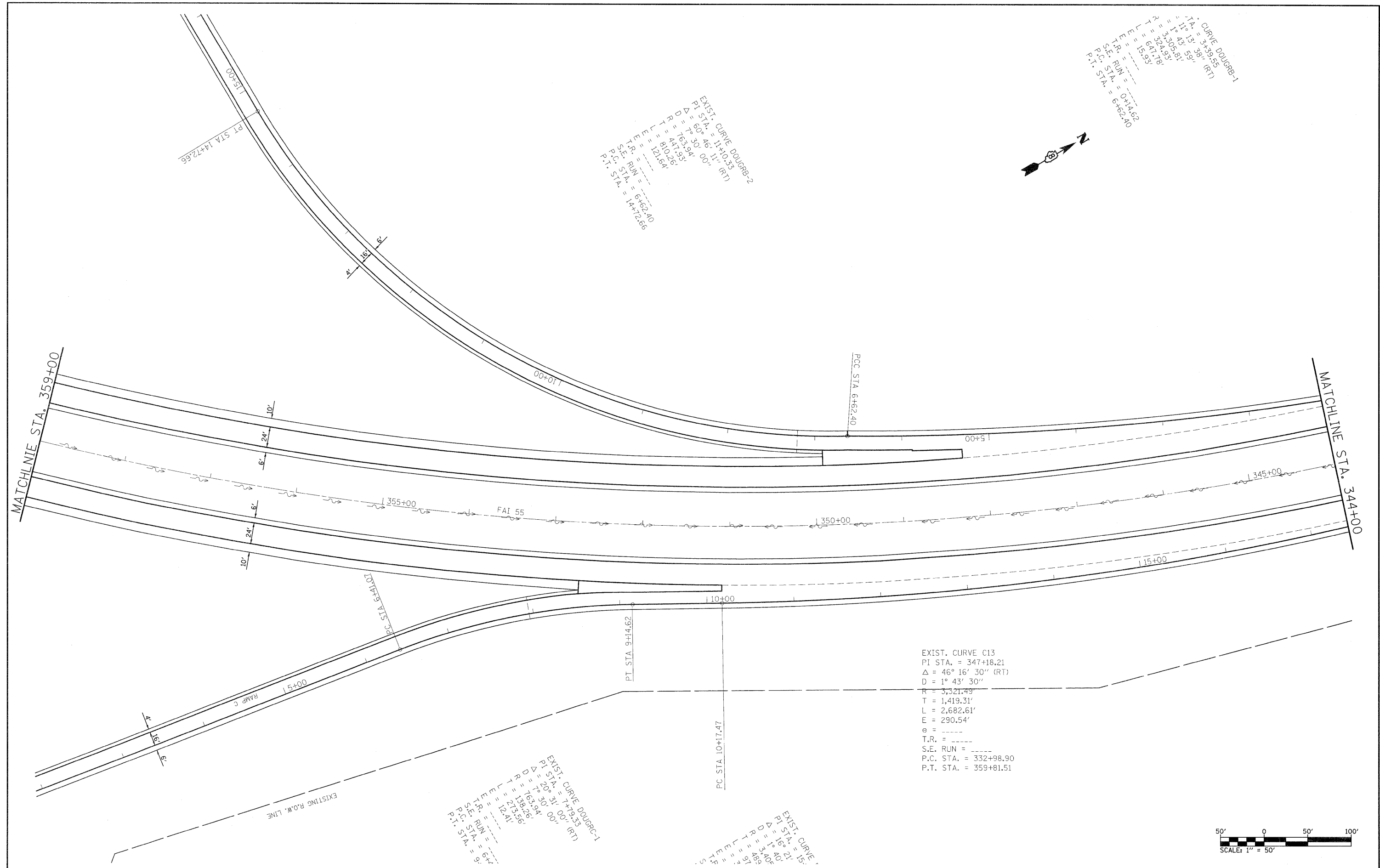
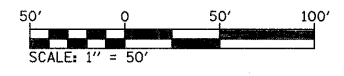
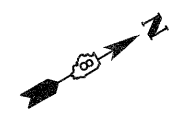
EXIST. CURVE D01GRB-1
 PI STA. = 3+39.55
 $\Delta = 11^{\circ} 13' 38''$ (RT)
 $R = 3,305.81'$
 $T = 324.93'$
 $L = 641.78'$
 $E = 15.93'$
 $e = 0.00'$
 T.R. = -----
 S.E. RUN = 0+14.62
 P.C. STA. = 6+62.40
 P.T. STA. = 6+62.40

EXIST. CURVE D01GRB-2
 PI STA. = 1+10.33
 $\Delta = 60^{\circ} 46' 11''$ (RT)
 $R = 71.30'$
 $T = 763.94'$
 $L = 417.95'$
 $E = 810.26'$
 $e = 121.64'$
 T.R. = -----
 S.E. RUN = 6+62.40
 P.C. STA. = 14+72.66
 P.T. STA. = 14+72.66

EXIST. CURVE C13
 PI STA. = 347+18.21
 $\Delta = 46^{\circ} 16' 30''$ (RT)
 $D = 1^{\circ} 43' 30''$
 $R = 3,321.49'$
 $T = 1,419.31'$
 $L = 2,682.61'$
 $E = 290.54'$
 $e = 0.00'$
 T.R. = -----
 S.E. RUN = -----
 P.C. STA. = 332+98.90
 P.T. STA. = 359+81.51

EXIST. CURVE D01GRB-1
 PI STA. = 7+19.33
 $\Delta = 29^{\circ} 31' 00''$ (RT)
 $R = 1,392.26'$
 $T = 139.26'$
 $L = 273.56'$
 $E = 12.41'$
 $e = 0.00'$
 T.R. = -----
 S.E. RUN = 6+
 P.C. STA. = 9+
 P.T. STA. = 9+
 S.E. RUN = 6+
 P.C. STA. = 9+
 P.T. STA. = 9+

EXIST. CURVE
 PI STA. = 15+
 $\Delta = 16^{\circ} 21'$
 $R = 3,406'$
 $T = 489'$
 $L = 3,406'$
 $E = 15.93'$
 $e = 0.00'$
 T.R. = -----
 S.E. RUN = -----
 P.C. STA. = -----
 P.T. STA. = -----



FILE NAME =	USER NAME = conoverpj	DESIGNED -	REVISED -	STATE OF ILLINOIS DEPARTMENT OF TRANSPORTATION	PLAN SHEETS		F.A.I. RTE.	SECTION	COUNTY	TOTAL SHEETS	SHEET NO.
at:\pw_work\p\idot\conoverpj\d0128605\d0128605-sht-plan.dgn	6601-sht-plan.dgn	DRAWN -	REVISED -		55	60-3RS-1,60-(3HB,3HB-1I)	MADISON	123	31		
PLOT SCALE = 50.0000 ' / IN.		CHECKED -	REVISED -		CONTRACT NO. 76601						
PLOT DATE = 6/23/2010		DATE -	REVISED -		FED. ROAD DIST. NO. - ILLINOIS FED. AID PROJECT						