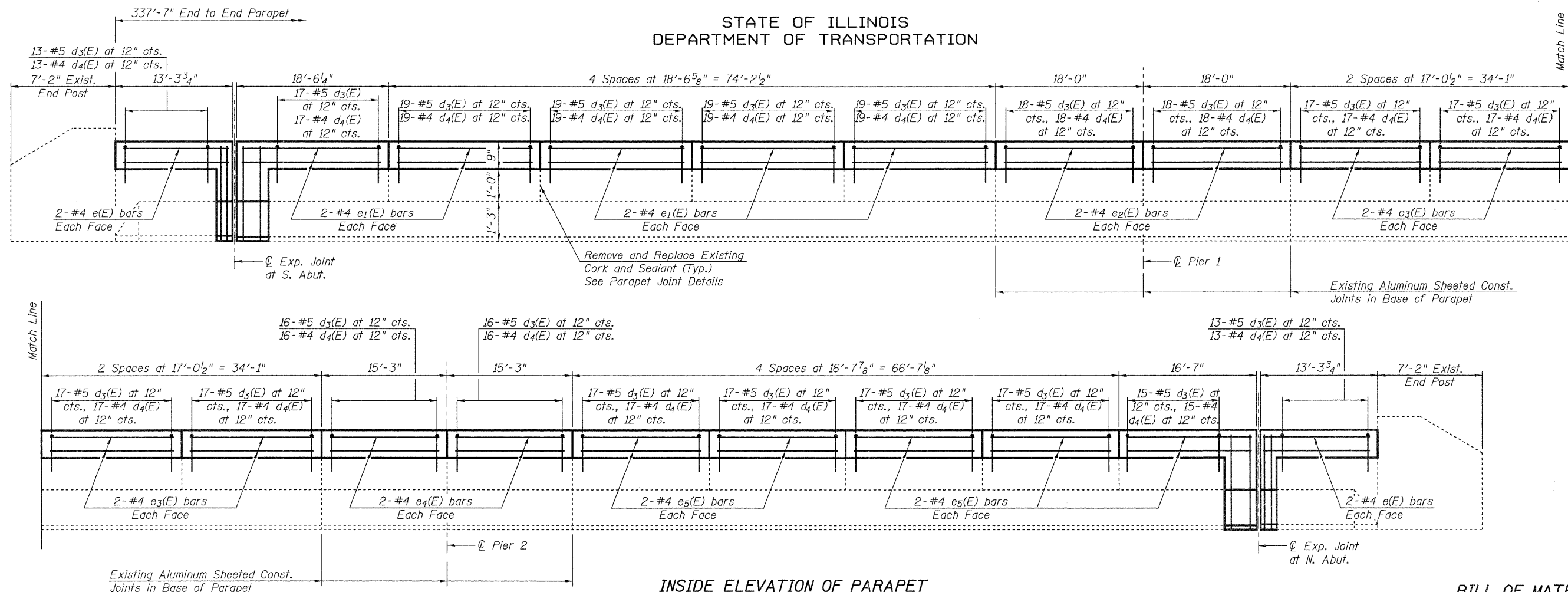


STATE OF ILLINOIS
DEPARTMENT OF TRANSPORTATION



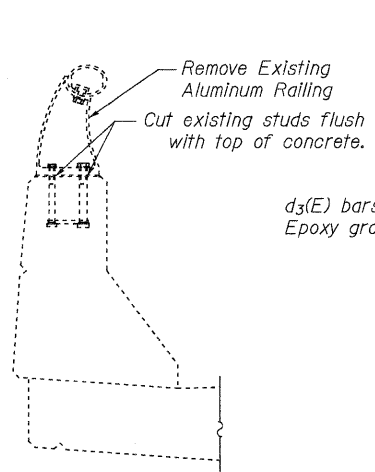
INSIDE ELEVATION OF PARAPET

(West Parapet Shown, East Parapet Similar)
(Dimensions Measured Along Front Face of Parapet)

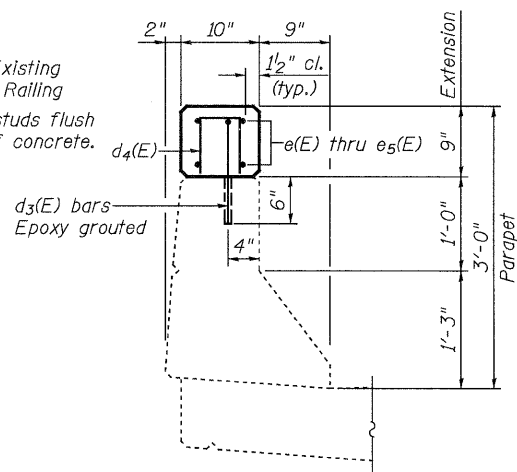
BILL OF MATERIAL

Bar No.	Size	Length	Shape	
d ₃ (E)	#5	1'-7"	L	
d ₄ (E)	#4	1'-7"	Π	
e(E)	#4	13'-0"	—	
e ₁ (E)	#4	18'-3"	—	
e ₂ (E)	#4	17'-8"	—	
e ₃ (E)	#4	16'-9"	—	
e ₄ (E)	#4	14'-11"	—	
e ₅ (E)	#4	16'-4"	—	
Reinforcement Bars, Epoxy Coated			Pound	3610
Concrete Superstructure			Cu. Yd.	15.6
Bridge Rail Removal			Foot	675

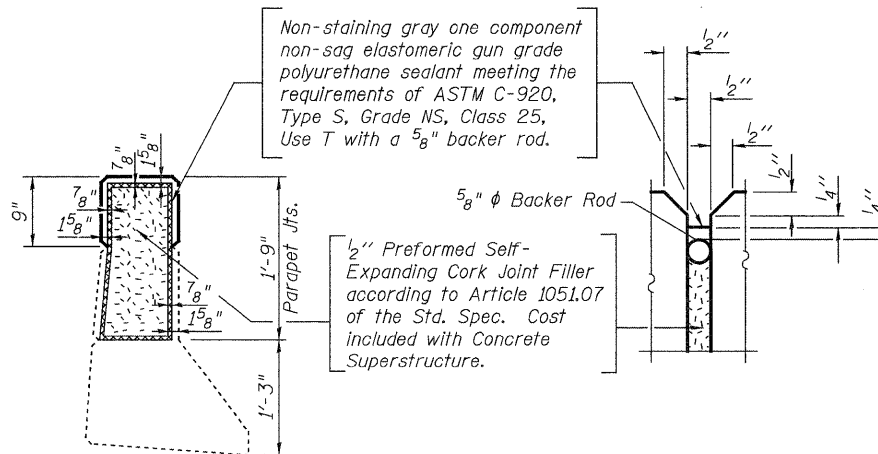
BRIDGE RAIL REMOVAL



SECTION THRU PARAPET



PARAPET JOINT DETAILS



BAR d₃(E)

BAR d₄(E)

**CONCRETE PARAPET EXTENSION DETAILS
STRUCTURE NO. 060-0195**

SHEET 3 OF 10	F.A.I. RTE.	SECTION	COUNTY	TOTAL SHEETS	SHEET NO.
	55	60-3RS-1, 60-(3HB,3HB-1)I	MADISON	123	85
	STA. 410+18.00		CONTRACT NO. 76601		
FED. ROAD DIST. NO.		ILLINOIS FED. AID PROJECT			

Note:
Work this sheet with sheet 5 of 10.

Lin Engineering, Ltd.
Consulting Engineers
Chatham, Illinois

DESIGNED: ESH	DRAWN: RH
CHECKED: MTH	CHECKED: MTH