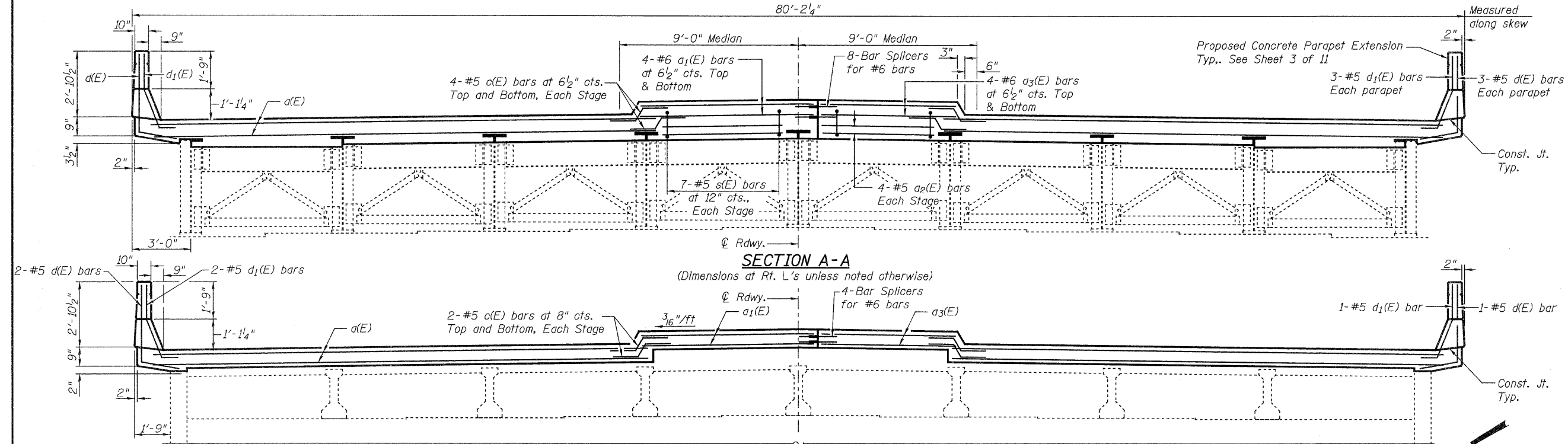


STATE OF ILLINOIS  
DEPARTMENT OF TRANSPORTATION

80'-2 1/4"

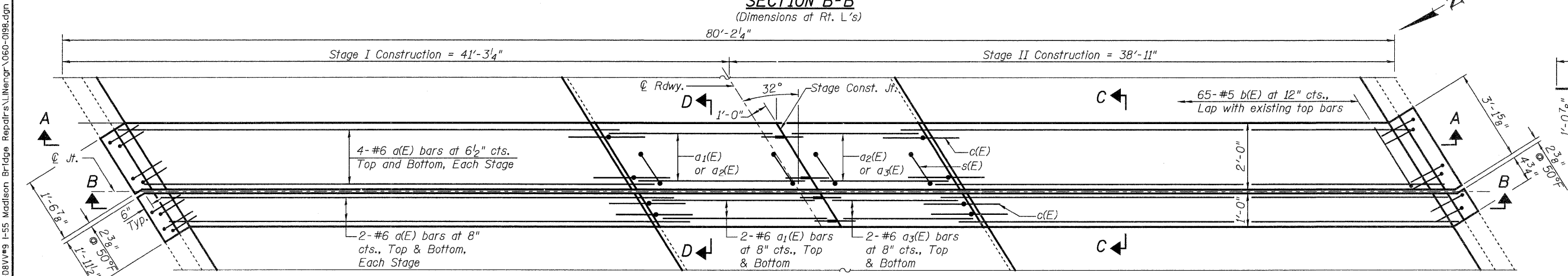


**SECTION A-A**  
(Dimensions at Rt. L's unless noted otherwise)

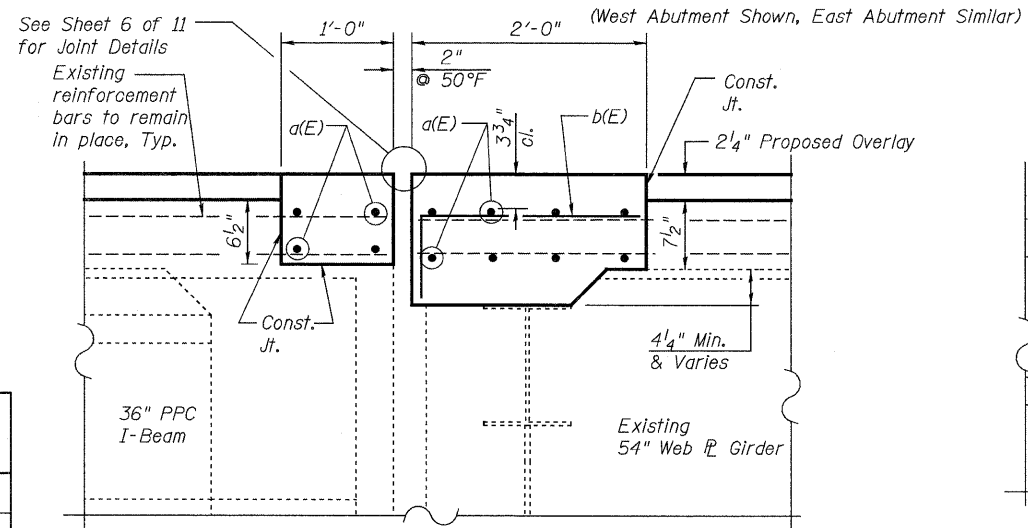
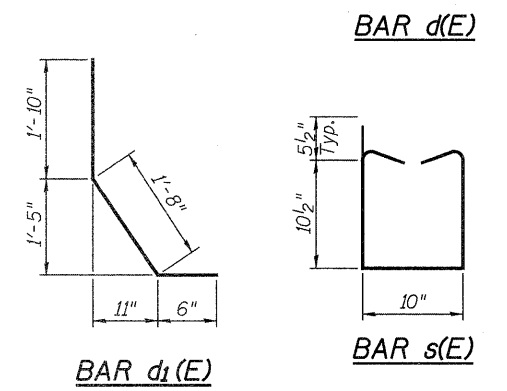
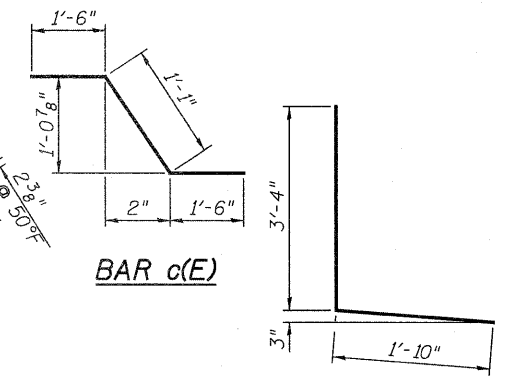
**SECTION B-B**  
(Dimensions at Rt. L's)

**BILL OF MATERIAL**  
(Two Abutments)

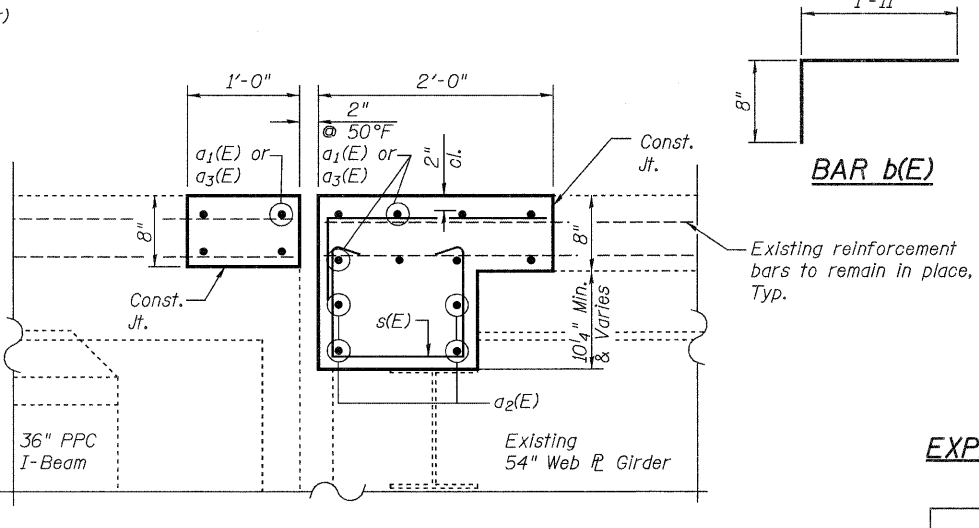
Bar	No.	Size	Length	Shape
a(E)	48	#6	30'-0"	—
a1(E)	24	#6	10'-6"	—
a2(E)	16	#5	7'-3"	—
a3(E)	24	#6	8'-2"	—
b(E)	130	#5	2'-7"	┘
c(E)	48	#5	4'-1"	~
d(E)	18	#5	5'-2"	L
d1(E)	18	#5	4'-0"	L
s(E)	28	#5	3'-6"	□
Reinforcement Bars, Epoxy Coated			Pound	3790
Concrete Superstructure			Cu. Yd.	17.7



**PLAN**



**SECTION C-C**  
(Dimensions at Rt. L's)



**SECTION D-D**  
(Dimensions at Rt. L's)

**EXPANSION JOINT CONCRETE DETAILS**  
**STRUCTURE NO. 060-0198**

<b>LIN ENGINEERING, LTD.</b> Consulting Engineers Chatham, Illinois	
DESIGNED: ESH	DRAWN: RH
CHECKED: MTH	CHECKED: MTH

SHEET 5 OF 11	F.A.I. RTE.	SECTION	COUNTY	TOTAL SHEETS	SHEET NO.
	55	60-3RS-1, 60-(3HB,3HB-1)I	MADISON	123	97
STA. 363+22.00			CONTRACT NO. 76601		
FED. ROAD DIST. NO.		ILLINOIS FED. AID PROJECT			

FILE: J:\JDO\10195 IL-08VVVg I-55 Madison Bridge Repairs\LInEngr\060-0198.dgn  
 USER: DCD  
 DATE: 06/22/2010 16:25:07