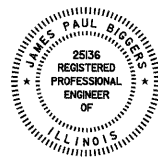


| F.A.I. RTE.                 | SECTION      | COUNTY  | TOTAL SHEETS | SHEET NO. |
|-----------------------------|--------------|---------|--------------|-----------|
| 55                          | 60-(1,2)RS-2 | MADISON | 156          | 1         |
| ILLINOIS CONTRACT NO. 76C93 |              |         |              |           |

FOR INDEX OF SHEETS, SEE SHEET NO. 2



*James Paul Biggers*  
 JAMES PAUL BIGGERS, P.E.

DATE 6/24/10  
 LICENSE EXPIRES 11/30/11

PLANS PREPARED BY:



**JOHNSON, DEPP & QUISENBERRY**  
 CONSULTING ENGINEERS

6450 South Sixth Street Road, Suite B Springfield, Illinois 62712  
 Phone: (217) 529-4534 Fax: (217) 529-8278

STATE OF ILLINOIS  
 DEPARTMENT OF TRANSPORTATION  
 DIVISION OF HIGHWAYS

**PROPOSED  
 HIGHWAY PLANS**

FAI ROUTE 55 (I-55)  
 SECTION 60-(1,2)RS-2  
 PROJECT: ACIM-055-1(082)020  
 RUBBLIZING AND RESURFACING  
 MADISON COUNTY

C-98-034-09

D-98-038-09



LOCATION OF SECTION INDICATED THUS: - [black bar] -

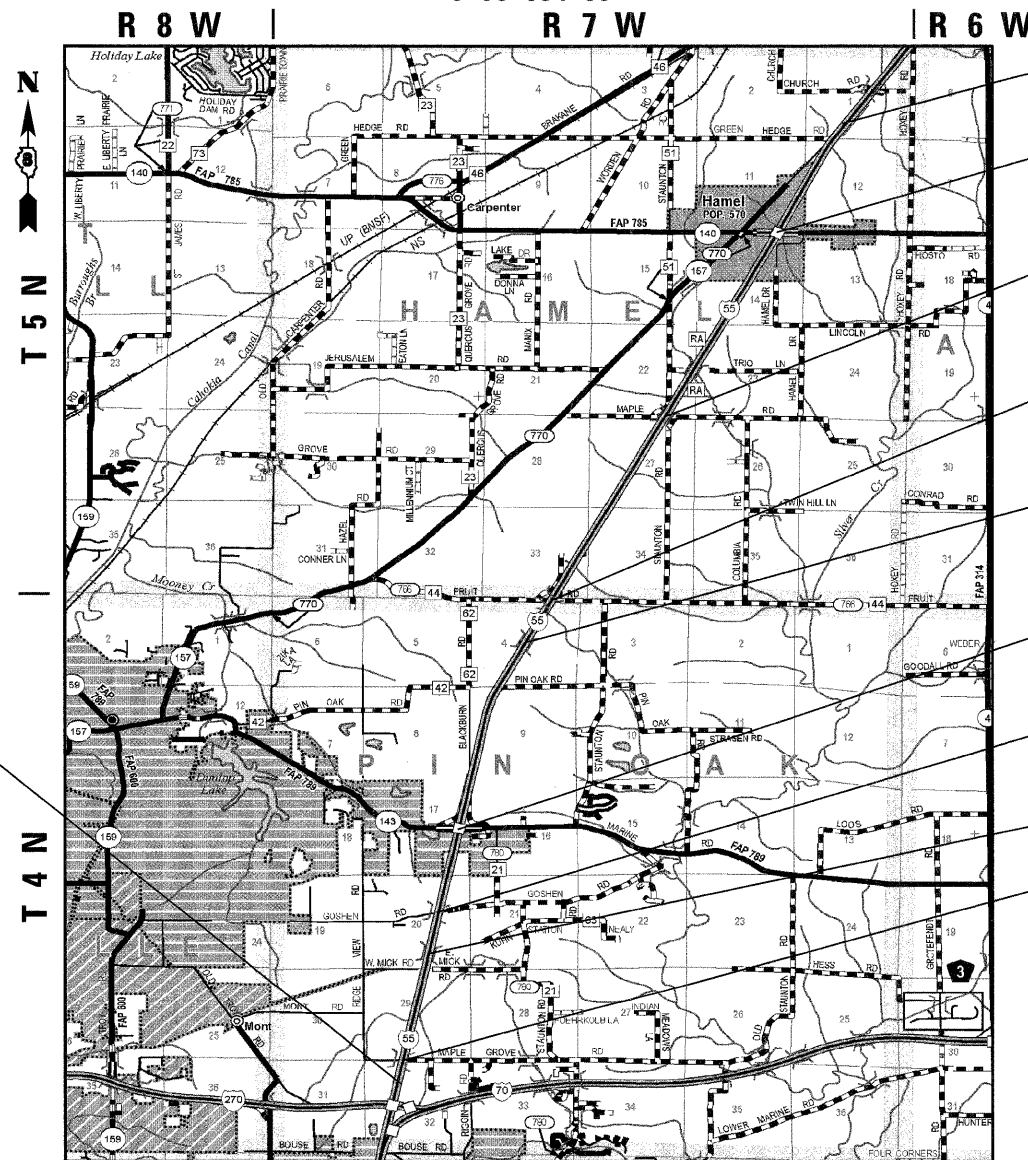
RURAL PRINCIPAL ARTERIAL (INTERSTATE)  
 F.A.I. 55 (I-55)  
 ADT (2009) = 29,700  
 PV = 76.1% SU = 3.0% MU = 20.9%  
 DESIGN SPEED = 70 MPH

STATE OF ILLINOIS  
 DEPARTMENT OF TRANSPORTATION  
 DIVISION OF HIGHWAYS

SUBMITTED June 05 2010  
[Signature]  
 DEPUTY DIRECTOR OF HIGHWAYS, REGION ENGINEER

August 13 2010  
[Signature]  
 ACTING ENGINEER OF DESIGN AND ENVIRONMENT

August 13 2010  
[Signature]  
 DIRECTOR OF HIGHWAYS, CHIEF ENGINEER



BEGIN PROJECT  
 STA. 668+00

STA. 738+51.63  
 SN 060-0073

STA. 858+41.29  
 SN 060-0180

STA. 977+77.64  
 SN 060-0179

STA. 1002+99.01  
 SN 060-0002(SB) & 0003(NB)  
 BRIDGE RESURFACING OMISSION  
 STA. 1001+45 TO STA. 1003+72 N.B.  
 STA. 1002+24 TO STA. 1004+51 S.B.

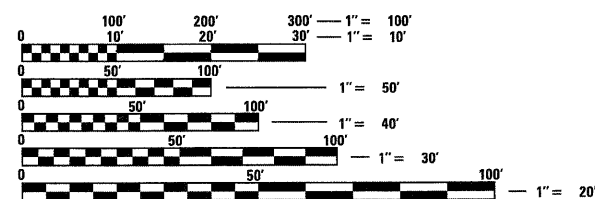
STA. 1117+32.52  
 SN 060-0148

STA. 1166+35.82  
 SN 060-0178

STA. 1190+05.79  
 SN 060-0001

STA. 1253+65.74  
 SN 060-0177

END PROJECT  
 STA. 1263+59

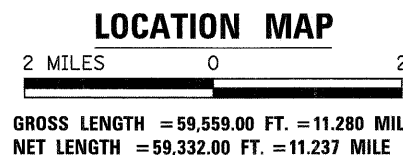


FULL SIZE PLANS HAVE BEEN PREPARED USING STANDARD ENGINEERING SCALES. REDUCED SIZED PLANS WILL NOT CONFORM TO STANDARD SCALES. IN MAKING MEASUREMENTS ON REDUCED PLANS, THE ABOVE SCALES MAY BE USED.

J.U.L.I.E.  
 JOINT UTILITY LOCATION INFORMATION FOR EXCAVATION  
 1-800-892-0123  
 OR 811

PROJECT ENGINEER: TIMOTHY PADGETT (618)346-3325  
 PROJECT MANAGER: TIMOTHY PADGETT (618)346-3325

CONTRACT NO. 76C93



PRINTED BY THE AUTHORITY  
 OF THE STATE OF ILLINOIS