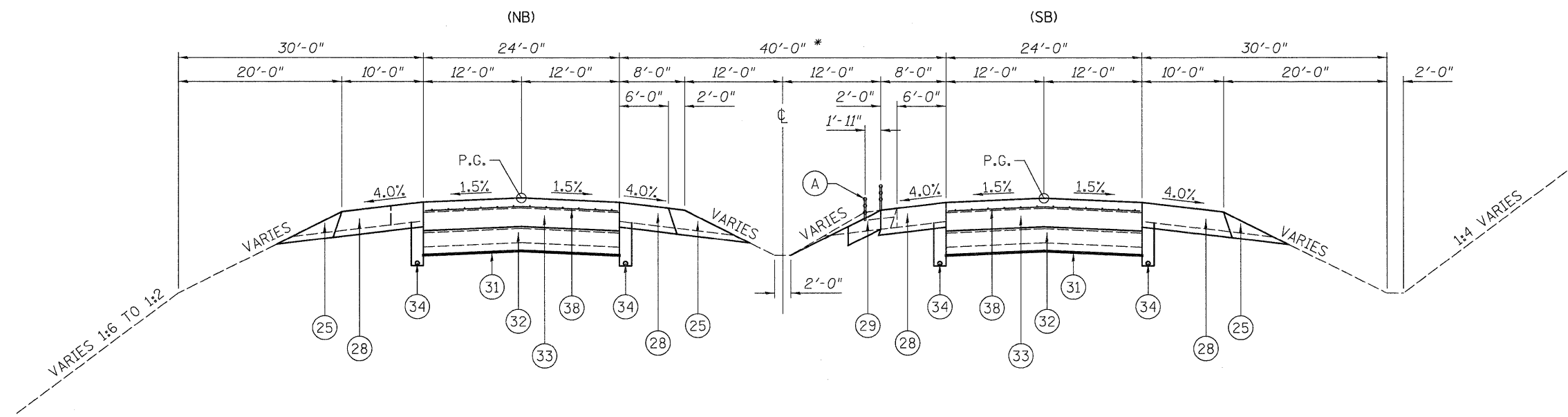


(A) SEE TYPICAL SECTION DETAIL FOR RELOCATION OF CABLE BARRIER.
(SEE PLANS FOR LOCATIONS)

* (SEE EXISTING TYPICAL SECTION)



PROPOSED F.A.I. ROUTE 55 PCC PAVEMENT TYPICAL SECTION
(LOOKING SOUTH)

STA. 734+00 TO STA. 743+00
STA. 1114+80 TO STA. 1121+00

NOTES: SEE PCC PAVMENT CONNECTION JOINT DETAIL FOR TYING TO PROPOSED HMA PAVEMENT.

EXISTING PAVEMENT IS TO BE REMOVED WITHIN THE LIMITS SHOWN ABOVE WILL BE PAID FOR AS PAVEMENT REMOVAL.

EXISTING SHOULDERS ARE TO BE REMOVED WITHIN THE LIMITS SHOWN ABOVE WILL BE PAID FOR AS PAVED SHOULDER REMOVAL.

- (20) PROPOSED HMA BASE COURSE 12" (PLACED DURING PRE-CONSTRUCTION WORK)
- (21) PROPOSED HMA SURFACE REMOVAL (VARIABLE DEPTH)
- (22) PROPOSED HMA SURFACE COURSE 2"
- (23) PROPOSED HMA BINDER COURSE 9/2"
- (24) PROPOSED HMA SHOULDER (VARIABLE THICKNESS)
- (25) PROPOSED AGGREGATE SHOULDER, TYPE B
- (26) PROPOSED HMA SURFACE COURSE 2"
- (27) PROPOSED HMA BINDER COURSE 2 1/4"
- (28) PROPOSED HMA SHOULDER 12"
- (29) PROPOSED RIPRAP, CLASS A2 (6" THICK) WITH FILTER FABRIC
- (30) PROPOSED HMA PAVEMENT 8 1/4" OR 8 1/2" (SEE PLAN/PROFILE SHEETS)
- (31) PROPOSED SUBGRADE REINFORCEMENT
- (32) PROPOSED AGGREGATE BASE COURSE, TYPE A 12"
- (33) PROPOSED CONTINUOUSLY REINFORCED PORTLAND CEMENT CONCRETE PAVEMENT 14"
- (34) PROPOSED PIPE UNDERDRAINS 6"
- (35) PROPOSED NO. 5 TIE BAR, 30" LONG (SEE STD. 483001)
- (36) PROPOSED SUBBASE GRANULAR MATERIAL, TYPE C
- (37) PROPOSED CEMENT CONCRETE SHOULDERS 8" (SPECIAL)
- (38) PROPOSED PAVEMENT REINFORCEMENT

FILE NAME =	USER NAME = SJS	DESIGNED -	REVISED -	STATE OF ILLINOIS DEPARTMENT OF TRANSPORTATION	PROPOSED TYPICAL SECTIONS				F.A.I. RTE.	SECTION	COUNTY	TOTAL SHEETS	SHEET NO.
...\\cadd\d876093-ah-typicoel.dgn		DRAWN -	REVISED -						55	60-(1,2)RS-2	MADISON	156	16
	PLOT SCALE = 8.0000' / IN.	CHECKED -	REVISED -		CONTRACT NO. 76C93				FED. ROAD DIST. NO. ILLINOIS FED. AID PROJECT				
	PLOT DATE = 06/23/2010 15:32:04	DATE -	REVISED -		SCALE:	SHEET NO.	OF SHEETS	STA.	TO STA.				