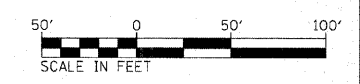
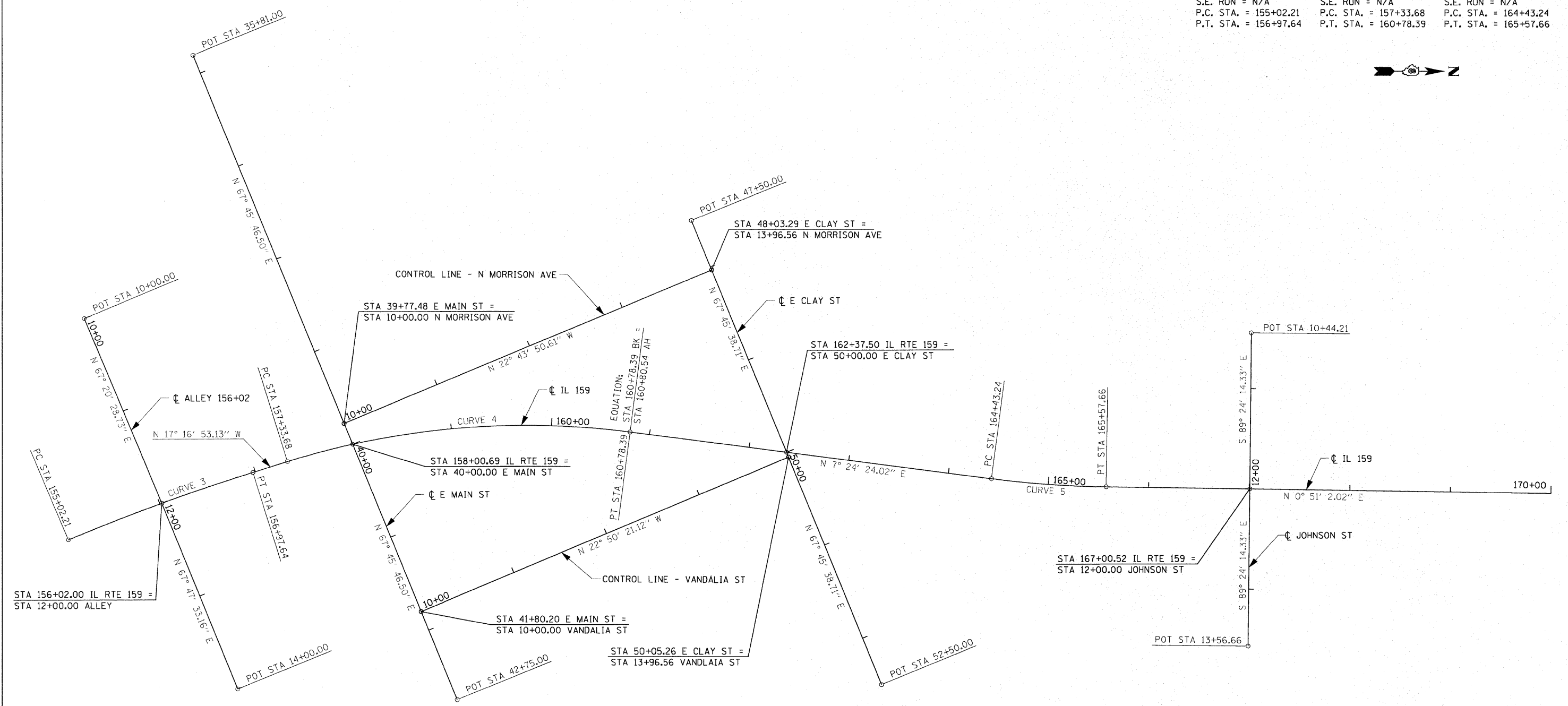


IL RTE 159 CURVE 3	IL RTE 159 CURVE 4	IL RTE 159 CURVE 5
PI STA. =156+00.00	PI STA. =159+08.76	PI STA. =165+00.51
Δ =5° 35' 55" (RT)	Δ =24° 41' 17" (RT)	Δ =6° 33' 22" (LT)
D =2° 51' 53"	D =7° 09' 43"	D =5° 43' 46"
R =2,000.00'	R =800.00'	R =1,000.00'
T =97.79'	T =175.07'	T =57.28'
L =195.43'	L =344.71'	L =114.43'
E =2.39'	E =18.93'	E =1.64'
e = NC	e = NC	e = NC
T.R. = N/A	T.R. = N/A	T.R. = N/A
S.E. RUN = N/A	S.E. RUN = N/A	S.E. RUN = N/A
P.C. STA. = 155+02.21	P.C. STA. = 157+33.68	P.C. STA. = 164+43.24
P.T. STA. = 156+97.64	P.T. STA. = 160+78.39	P.T. STA. = 165+57.66



FILE NAME = p:\proj\jecla\513521\cadd\dgn\0876054-9ht	USER NAME = default ATB.dgn	DESIGNED - DRAWN -	REVISED - REVISED -	STATE OF ILLINOIS DEPARTMENT OF TRANSPORTATION	PROPOSED ALIGNMENT			F.A.P. RTE. 600	SECTION 60-(30,31,128)-N-1	COUNTY MADISON	TOTAL SHEETS 152	SHEET NO. 32
PLOT SCALE = 50.0000' / IN.					CHECKED -	SCALE: 1" = 50'	SHEET NO. 1 OF 2 SHEETS	STA. N/A	TO STA. N/A	CONTRACT NO. 76054		
PLOT DATE = 6/15/2010					DATE -	ILLINOIS FED. AID PROJECT						
					REVISED -							