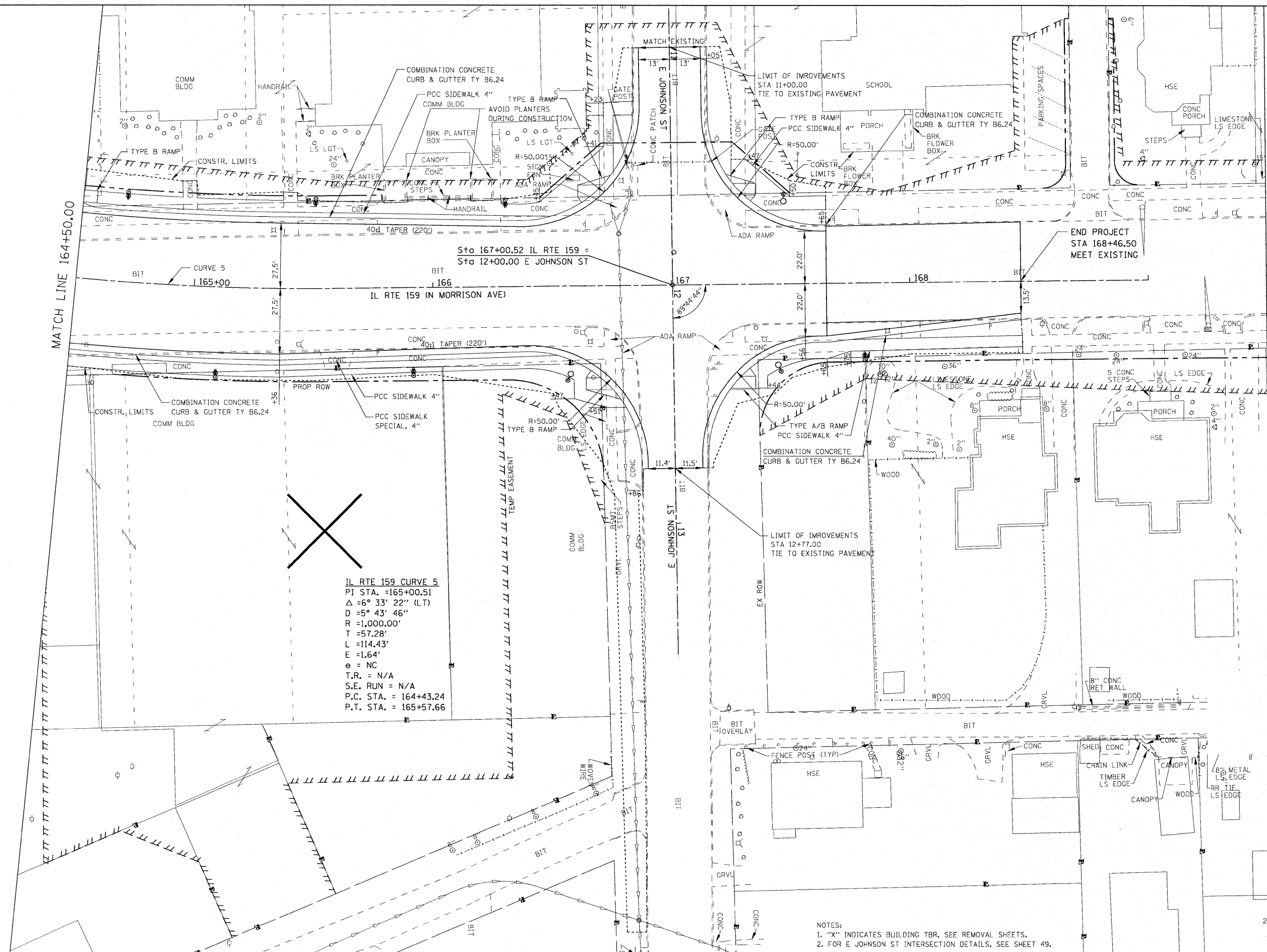


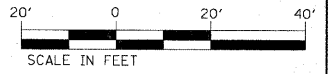
MATCH LINE 164+50.00

MATCH LINE 169+50.00



IL RTE 159 CURVE 5
 PI STA. = 165+00.51
 $\Delta = 6^\circ 33' 22''$ (LT)
 $D = 5^\circ 43' 46''$
 $R = 1,000.00'$
 $T = 57.28'$
 $L = 114.43'$
 $E = 1.64'$
 $e = NC$
 $T.R. = N/A$
 $S.E. RUN = N/A$
 $P.C. STA. = 164+43.24$
 $P.T. STA. = 165+57.66$

- NOTES:
 1. "X" INDICATES BUILDING TBR, SEE REMOVAL SHEETS.
 2. FOR E JOHNSON ST INTERSECTION DETAILS, SEE SHEET 49.



FILE NAME =	USER NAME = default	DESIGNED -	REVISED -	STATE OF ILLINOIS DEPARTMENT OF TRANSPORTATION	PLAN IL RTE. 159	F.A.P. RTE. 600	SECTION 60-130,31,128)-N-1	COUNTY MADISON	TOTAL SHEETS 152	SHEET NO. 38	
PROJECT =	PLT SCALE = 20.0000' / IN.	DRAWN -	REVISED -			SCALE: 1" = 20'	SHEET NO. 5 OF 10 SHEETS	STA. 164+50.00 TO STA. 169+50.00	CONTRACT NO. 76D54		
PLT DATE = 6/15/2010		CHECKED -	REVISED -			ILLINOIS FED. AID PROJECT					
		DATE -	REVISED -								