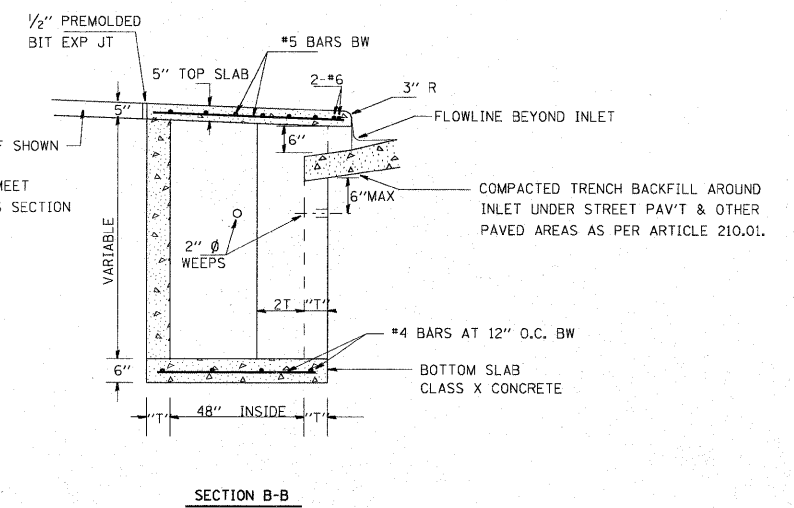
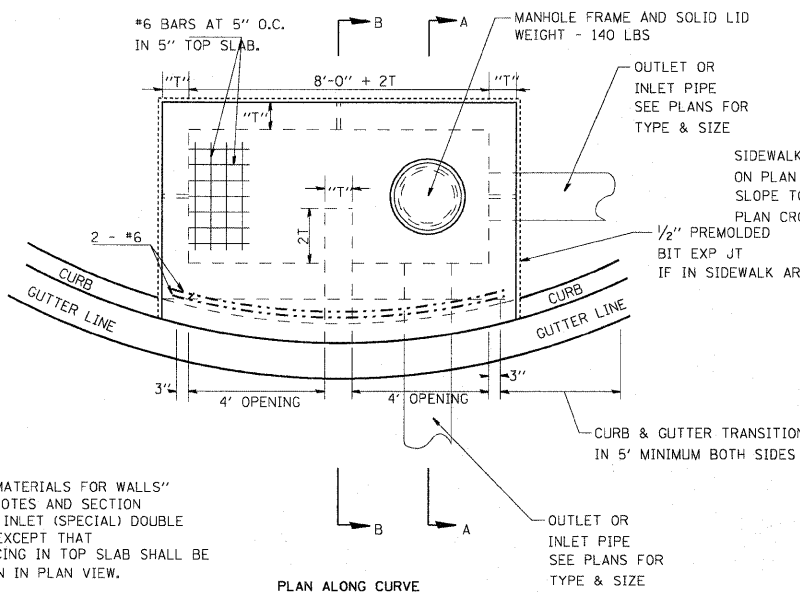
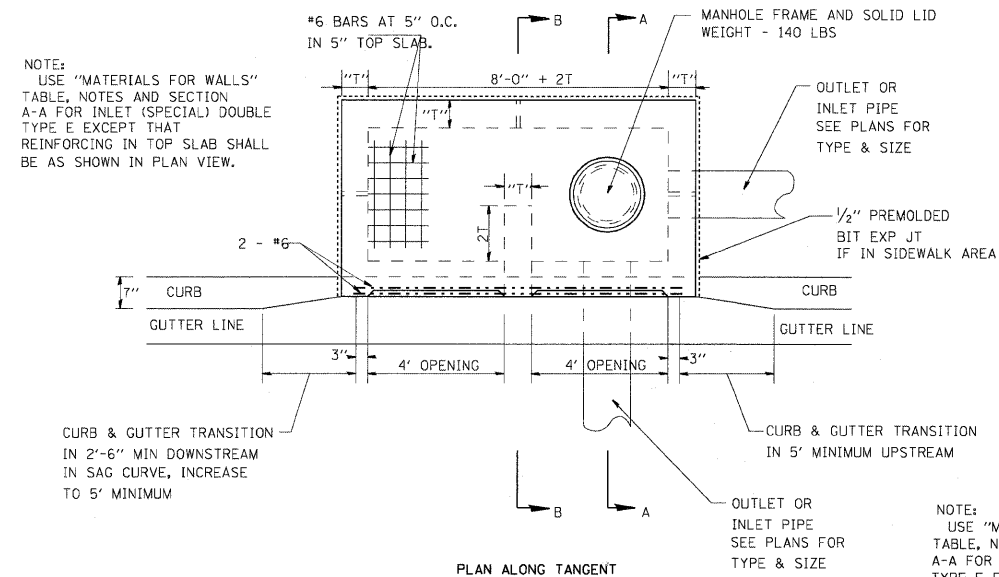
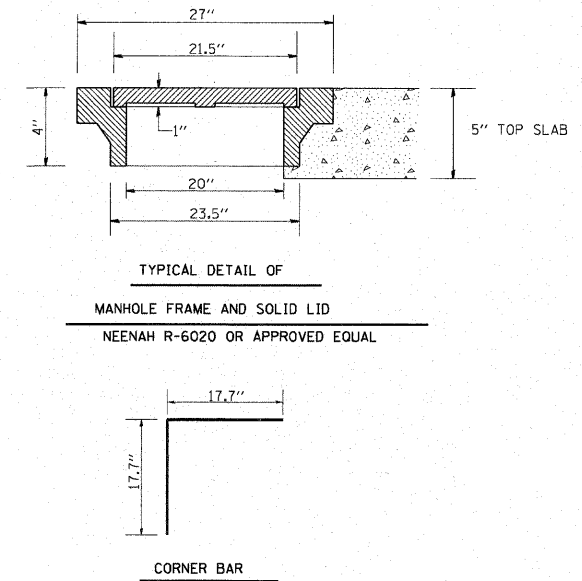
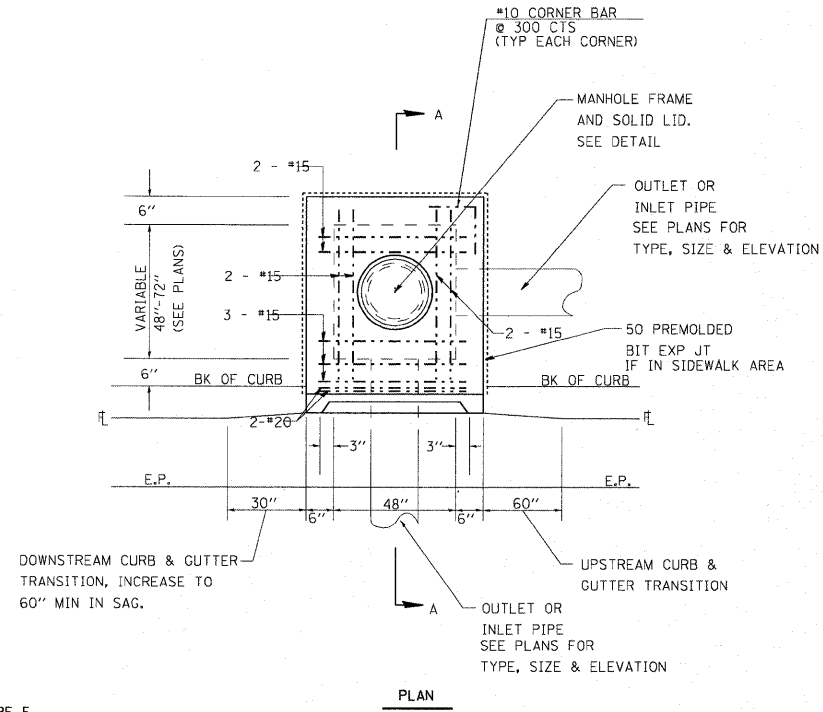
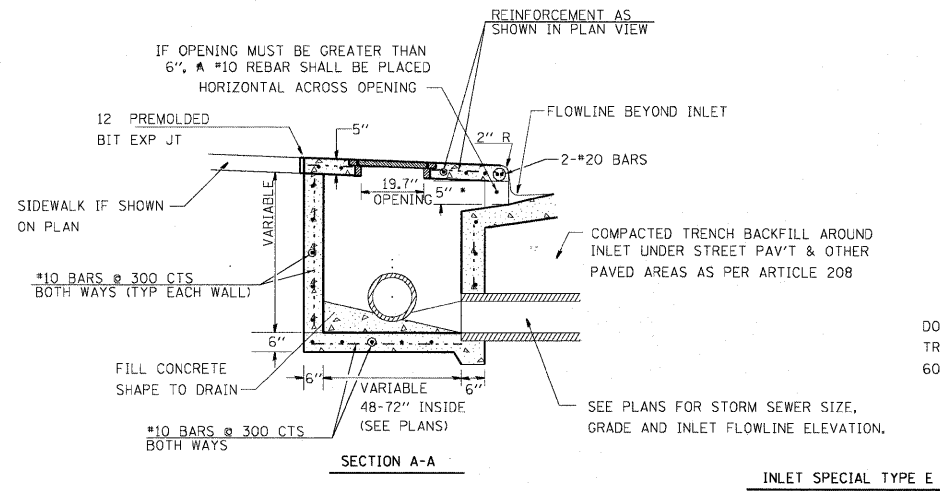


NOTES:

1. THE CONTRACT UNIT PRICE OF EACH FOR INLET, (SPECIAL) TYPE E SHALL INCLUDE ALL LABOR AND MATERIALS NECESSARY TO CONSTRUCT THE INLET IN ACCORDANCE WITH ARTICLE 602 OF THE STANDARD SPECIFICATIONS AND AND AS SHOWN HEREIN.
2. CLASS SI CONCRETE SHALL BE USED THROUGHOUT.
3. THE FRONT EDGE OF THE TOP SLAB SHALL BE EITHER STRAIGHT OR RADIUSED AS NEEDED TO CONFORM WITH THE SHAPE OF THE ADJACENT CURB AND GUTTER.



4. BRICKS, CONCRETE BLOCKS AND REINFORCED CONCRETE BLOCKS TO BE LAID IN FULL MORTAR BEDS WITH FLUSH JOINTS.
5. WHEN CONSTRUCTED OF MONOLITHIC CONCRETE, USE #4 REINFORCING BARS SPACED AT 12" CENTERS BOTH WAYS IN FLOOR SLAB AND WALLS.
6. FOR SECTION A-A, SEE ABOVE

INLET SPECIAL DOUBLE TYPE E

FILE NAME =	USER NAME = default	DESIGNED -	REVISED -	STATE OF ILLINOIS DEPARTMENT OF TRANSPORTATION	SPECIAL INLET TYPE E DETAILS			F.A.P. RTE.	SECTION	COUNTY	TOTAL SHEETS	SHEET NO.	
pr\projects\613501\cadd\adgn\0876054-shd\drain\details.dgn		DRAWN -	REVISED -		SCALE: N/A	SHEET NO. 3 OF 5 SHEETS	STA N/A	TO STA N/A	600	60-(30,31,128)-N-1	MADISON	152	68
PLOT SCALE = 20.0000' / IN.		CHECKED -	REVISED -		CONTRACT NO. 76D54								
PLOT DATE = 6/16/2010		DATE -	REVISED -		FED. ROAD DIST. NO. ILLINOIS FED. AID PROJECT								