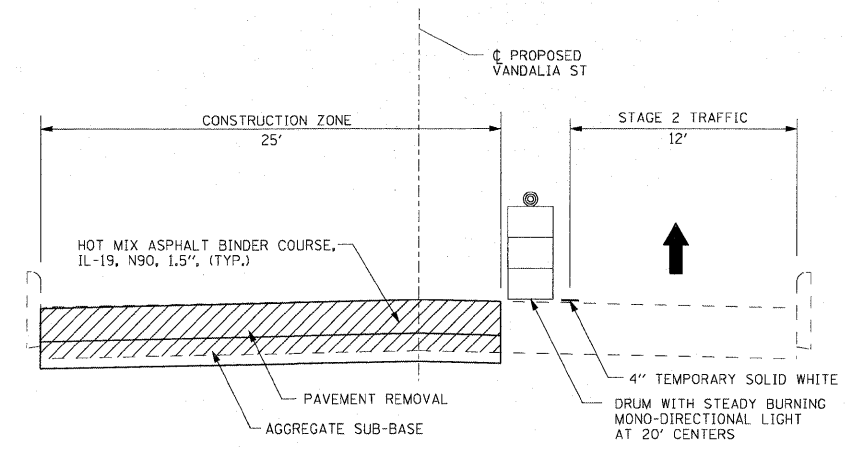
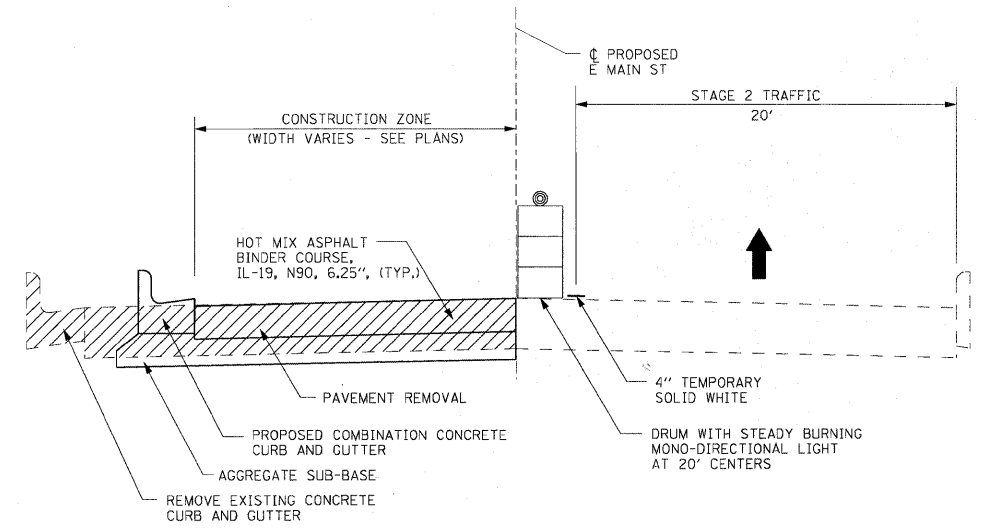


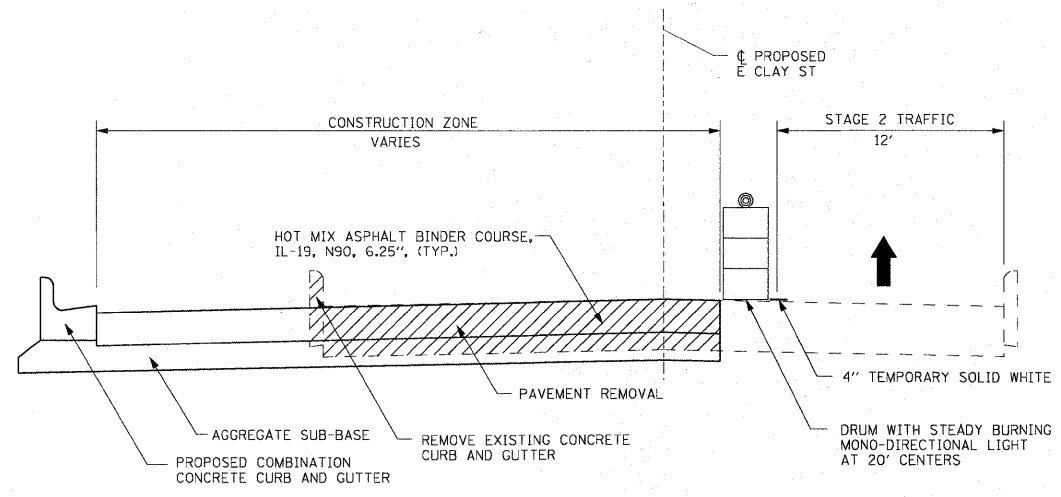
STAGE I - ALLEY 156+02 TO E MAIN ST



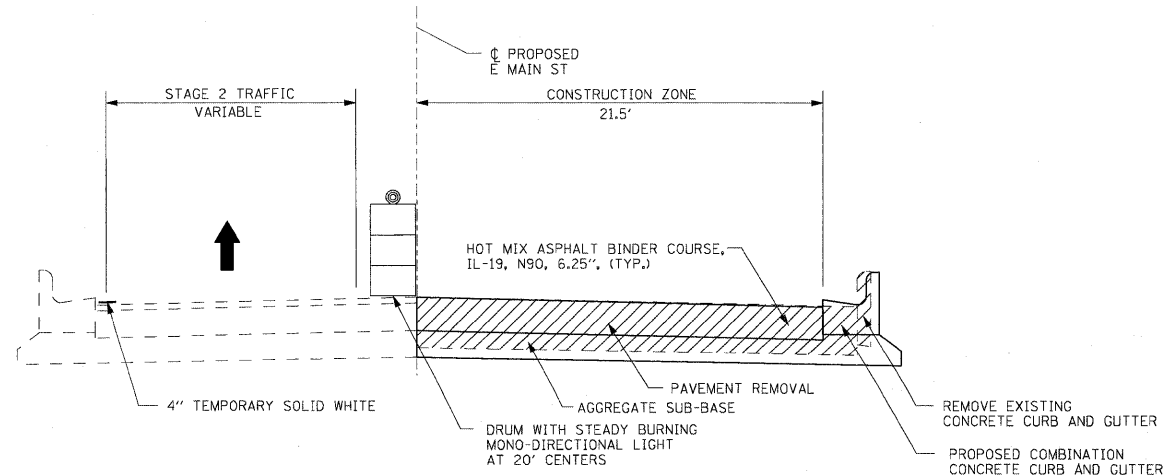
STAGE 2 - VANDALIA ST (NB IL 159 TRAFFIC)



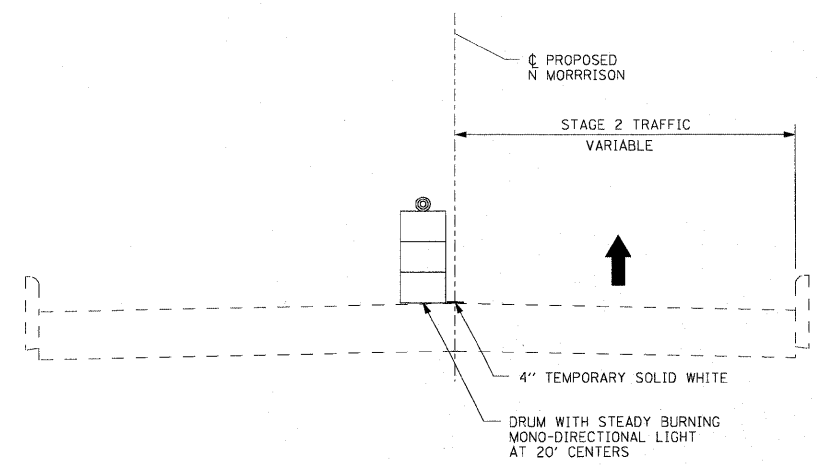
STAGE 2 - E MAIN ST PHASE 1 (NB IL 159 TRAFFIC)



STAGE 2 - E CLAY ST (SB IL 159 TRAFFIC)



STAGE 2 - E MAIN ST PHASE 2 (NB IL 159 TRAFFIC)



STAGE 2 - N MORRISON ST (SB IL 159 TRAFFIC)

FILE NAME =	USER NAME = default	DESIGNED -	REVISED -
P:\Projects\613521\CADD\DGN\0876D54-shl	staging.dgn	DRAWN -	REVISED -
	PLOT SCALE = 50.0000' / IN.	CHECKED -	REVISED -
	PLOT DATE = 6/16/2012	DATE -	REVISED -

STATE OF ILLINOIS
DEPARTMENT OF TRANSPORTATION

SUGGESTED STAGES OF CONSTRUCTION AND TRAFFIC CONTROL TYPICAL SECTIONS			
SCALE: N/A	SHEET NO. 1 OF 9 SHEETS	STA. N/A	TO STA. N/A

F.A.P. RTE.	SECTION	COUNTY	TOTAL SHEETS	SHEET NO.
600	60-(30,31,128)-N-1	MADISON	152	76
CONTRACT NO. 76D54				
ILLINOIS FED. AID PROJECT				