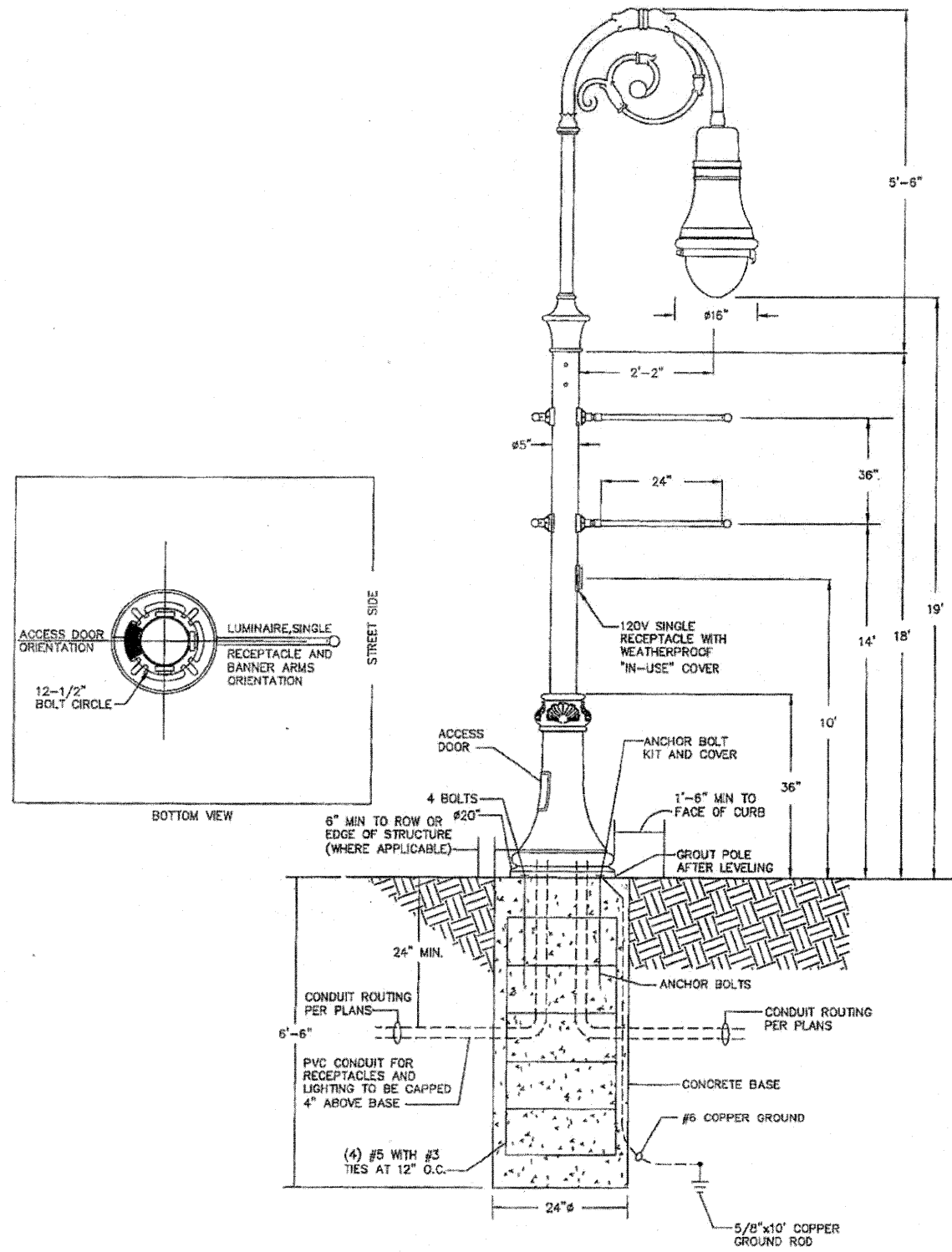
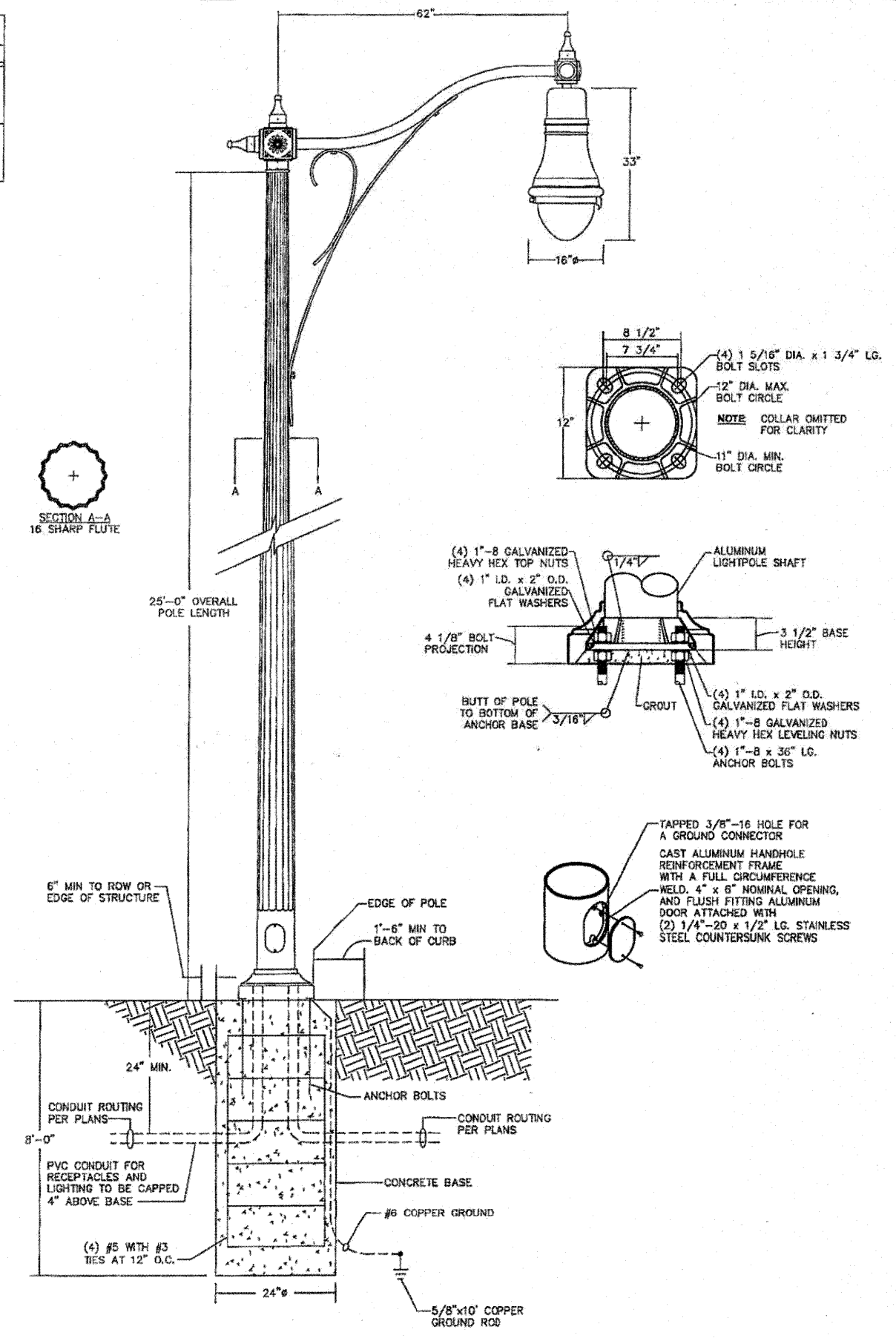


**LIGHT FIXTURE SCHEDULE**

TYPE	MANUFACTURER & CATALOG No.	VOLTAGE	LAMPS	MOUNTING	DESCRIPTION & REMARKS
SA	HCI F187-L-EPC-250PSMH-QT-BL3-A361-1A-MOD P454-5PC-18-SRT-BA1-BBMX2-RAL9011	240	(1) 250W PSMH	POLE	CITY OF COLLINSVILLE STANDARD FIXTURE. SEE DETAIL ON THIS SHEET FOR INSTALLATION. PROVIDE (1) GFCI RECEPTACLE AT 10'-0" ABOVE FINISHED GRADE WITH "IN-USE" WP RECEPTACLE COVER. PROVIDE FUSING IN BASE.
SB	HCI F187-L-EPC-250PSMH-BR3-QT(240)-RAL9011 WITH A377-1A-RAL9011 ARM AND VALMONT POLE CQA-8-185-6-LT-250-P2-BK-BCAS-DL	240	(1) 250W PSMH	POLE	DECORATIVE ARM MOUNT FIXTURE. SEE DETAIL ON THIS SHEET FOR POLE BASE. PROVIDE FUSING IN BASE.



**FIXTURE TYPE SA POLE INSTALLATION DETAIL**



**FIXTURE TYPE SB POLE INSTALLATION DETAIL**

FILE NAME =	USER NAME =	DESIGNED -	REVISED -
		DRAWN -	REVISED -
	PLOT SCALE =	CHECKED -	REVISED -
	PLOT DATE = 3/18/2018	DATE -	REVISED -

**STATE OF ILLINOIS  
DEPARTMENT OF TRANSPORTATION**

**FIXTURE SCHEDULE AND DETAILS**

SCALE: NA SHEET NO. 1 OF 1 SHEETS STA. NA TO STA. NA

F.A.P. RTE.	SECTION	COUNTY	TOTAL SHEETS	SHEET NO.
600	60-(30,31,128)-N-1	MADISON	152	98F
CONTRACT NO. 76054				
ILLINOIS FED. AID PROJECT				