

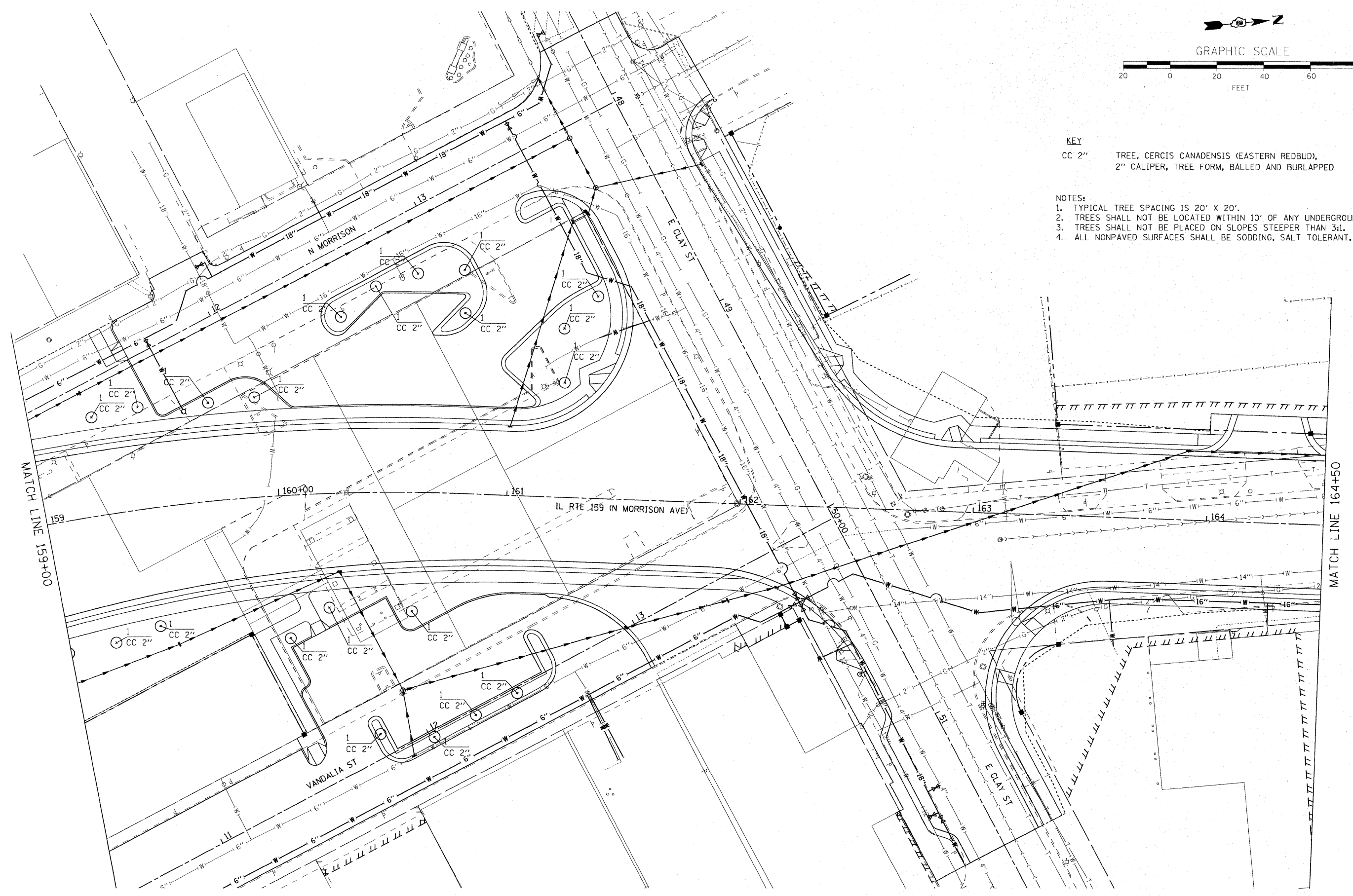


GRAPHIC SCALE



KEY
 CC 2" TREE, CERCIS CANADENSIS (EASTERN REDBUD),
 2" CALIPER, TREE FORM, BALLED AND BURLAPPED

NOTES:
 1. TYPICAL TREE SPACING IS 20' X 20'.
 2. TREES SHALL NOT BE LOCATED WITHIN 10' OF ANY UNDERGROUND UTILITY.
 3. TREES SHALL NOT BE PLACED ON SLOPES STEEPER THAN 3:1.
 4. ALL NONPAVED SURFACES SHALL BE SODDING, SALT TOLERANT.



FILE NAME =	USER NAME = #USER#	DESIGNED - LDC	REVISED -	STATE OF ILLINOIS DEPARTMENT OF TRANSPORTATION	LANDSCAPE PLAN			F.A.P. RTE.	SECTION	COUNTY	TOTAL SHEETS	SHEET NO.	
#FILE#		DRAWN - MBB	REVISED -		600	60-(30,31,12B)-N-1	MADISON	152	111	CONTRACT NO. 76D54			
PLOT SCALE = #SCALE#		CHECKED - CHA	REVISED -		SCALE: 1' = 20'			SHEET NO. 2 OF 3 SHEETS	STA. 159+00	TO STA. 164+50		ILLINOIS FED. AID PROJECT	
PLOT DATE = #DATE#		DATE - 04/01/10	REVISED -										