

F.A.P. RTE.	SECTION	COUNTY	TOTAL SHEETS	SHEET NO.
776	102B-4	HAMILTON	42	1
FED. ROAD DIST. NO. 7		ILLINOIS	CONTRACT NO. 78081	

STATE OF ILLINOIS
DEPARTMENT OF TRANSPORTATION
DIVISION OF HIGHWAYS

**PROPOSED FEDERAL AID
HIGHWAY BRIDGE PROGRAM**

SECTION 102B-4
F.A.P. ROUTE 776 (IL. ROUTE 242)

PROJECT NO. ACBRF-0776 (027)
HAMILTON COUNTY
JOB NO. C-99-068-08
STRUCTURE REPLACEMENT OVER UNNAMED STREAM
5.0 MILES SOUTH OF WAYNE COUNTY LINE

INDEX OF SHEETS

- 1 COVER SHEET
- 2 GENERAL NOTES AND MIXTURE REQUIREMENTS
- 3-4 SUMMARY OF QUANTITIES
- 5-6 TYPICAL SECTIONS
- 7-9 SCHEDULE OF QUANTITIES
- 10 ALIGNMENT, TIES AND BENCHMARKS
- 11-13 PLAN AND PROFILE SHEETS
- 14-15 MAINTENANCE OF TRAFFIC SHEETS
- 16 WIDE LOAD DETOUR
- 17 STORMWATER POLLUTION PREVENTION PLANS
- 18 RIGHT-OF-WAY PLAN
- 19 INTERSECTION DETAILS
- 20 PAVEMENT MARKING AND SIGNING PLAN
- 21-29 STRUCTURAL PLANS
- 30-31 DISTRICT DETAILS
- 32-42 ROADWAY CROSS SECTIONS

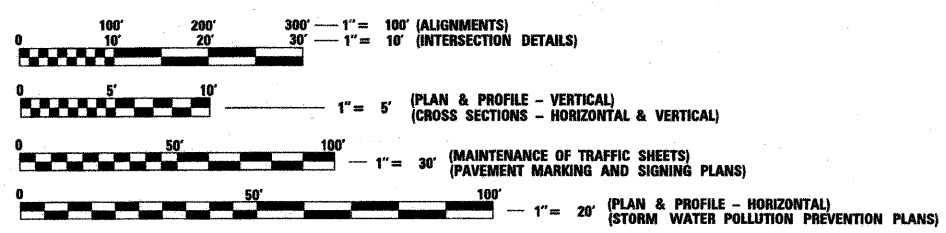
IDOT HIGHWAY STANDARDS

000001-05	701001-02
001001-02	701011-02
001006	701201-03
280001-05	701301-03
420001-07	701311-03
421001-02	701321-10
482006-03	701326-03
515001-03	701901-01
630001-08	704001-06
630201-06	720001-01
630301-05	720006-02
631011-06	780001-02
635006-03	B.L.R. 21-8
635011-02	

HIGHWAY CLASSIFICATION / TRAFFIC DATA

F.A.P. RTE. 776 (IL. RTE. 242)
FUNCTIONAL CLASS: MINOR ARTERIAL (NON-URBAN)
DESIGN SPEED: 55 MPH
POSTED SPEED: 55 MPH
ADT: 1260 (2008), 1540 (2028)
DHV: 125 (2008), 155 (2028)
14.6% TRUCKS

TOWNSHIP : CROUCH



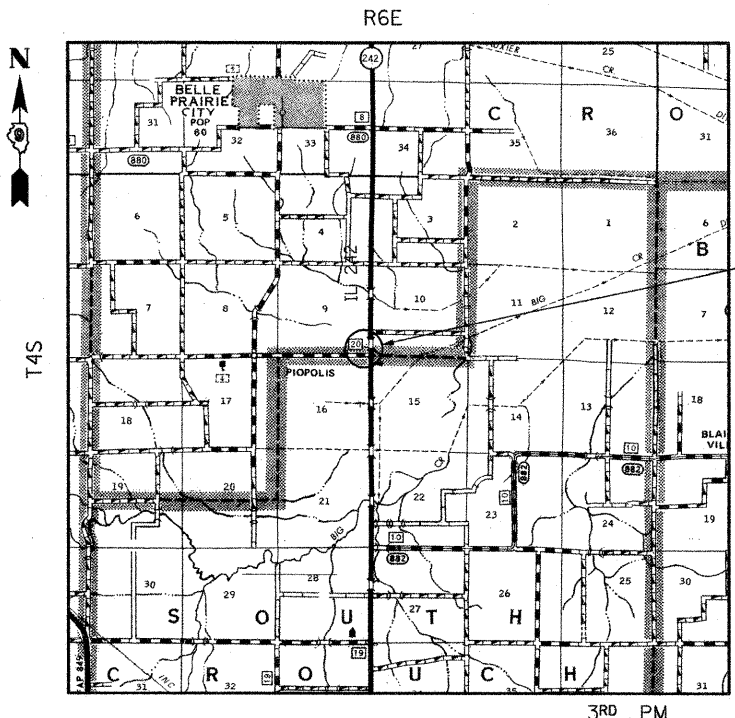
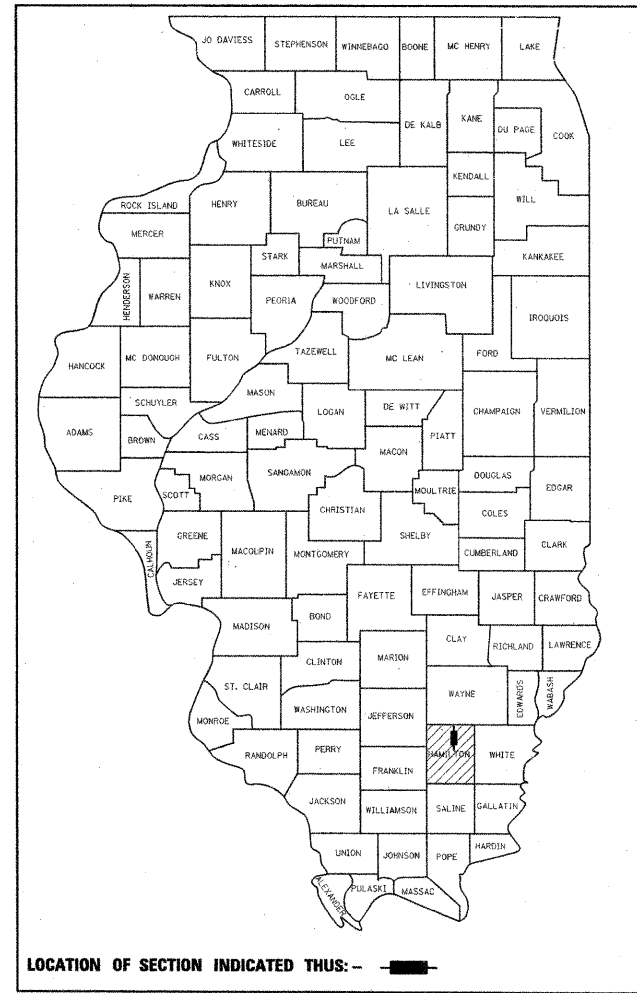
FULL SIZE PLANS HAVE BEEN PREPARED USING STANDARD ENGINEERING SCALES. REDUCED SIZED PLANS WILL NOT CONFORM TO STANDARD SCALES. IN MAKING MEASUREMENTS ON REDUCED PLANS, THE ABOVE SCALES MAY BE USED.

J.U.L.I.E.
JOINT UTILITY LOCATION INFORMATION FOR EXCAVATION
1-800-892-0123 OR "811"

PROJECT MANAGER: DAVID PICHE, P.E. (618) 351-5227

CONTRACT NO. 78081

D-99-050-08



PROP. S.N. 033-2010
15' X 8" DOUBLE BOX CULVERT CARRYING
F.A.P. 776 OVER UNNAMED STREAM
STA. 659+11.74, 15° SKEW LT. FWD.
ROADWAY IMPROVEMENTS, IL 242
STA. 656+27.00 TO STA. 662+30.52

LOCATION MAP



GROSS LENGTH OF PROJECT = 603.52 FT. (0.114 MILES)

PRINTED BY THE AUTHORITY
OF THE STATE OF ILLINOIS

STATE OF ILLINOIS
DEPARTMENT OF TRANSPORTATION
DIVISION OF HIGHWAYS

SUBMITTED June 17 2010
Mr. [Signature]
DEPUTY DIRECTOR OF HIGHWAYS, REGION ENGINEER

August 13 2010
Scott E. Stitt, P.E.
acting ENGINEER OF DESIGN AND ENVIRONMENT

August 13 2010
Christine M. Reed
DIRECTOR OF HIGHWAYS, CHIEF ENGINEER

SIGNATURE: Brian M. Bond
DATE SIGNED: 5/24/10
LICENCE EXPIRATION DATE: 11/30/11



CMT
CRAWFORD, MURPHY & TILLY, INC.
CONSULTING ENGINEERS
License No. 184-000613