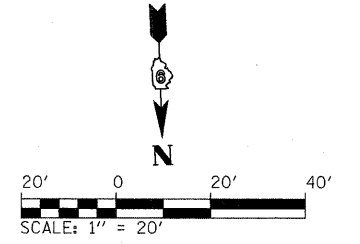


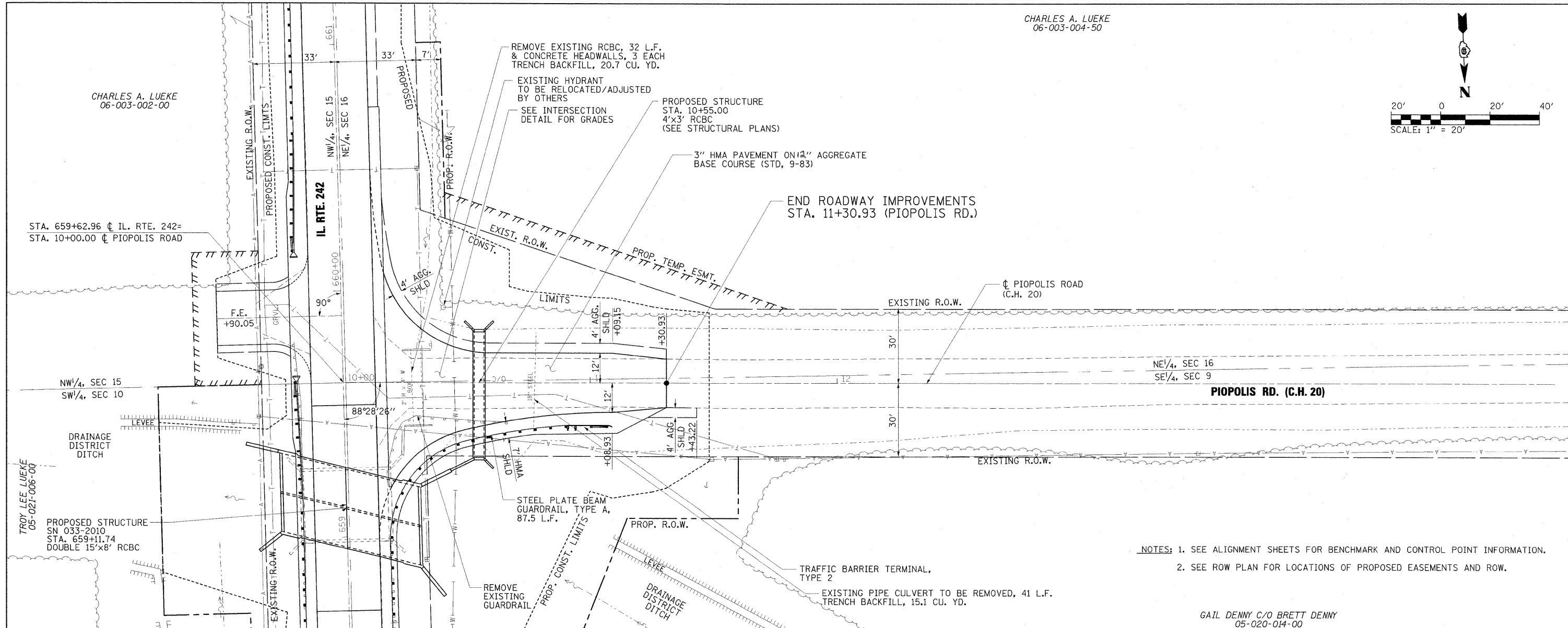
CHARLES A. LUEKE
06-003-004-50



CHARLES A. LUEKE
06-003-002-00

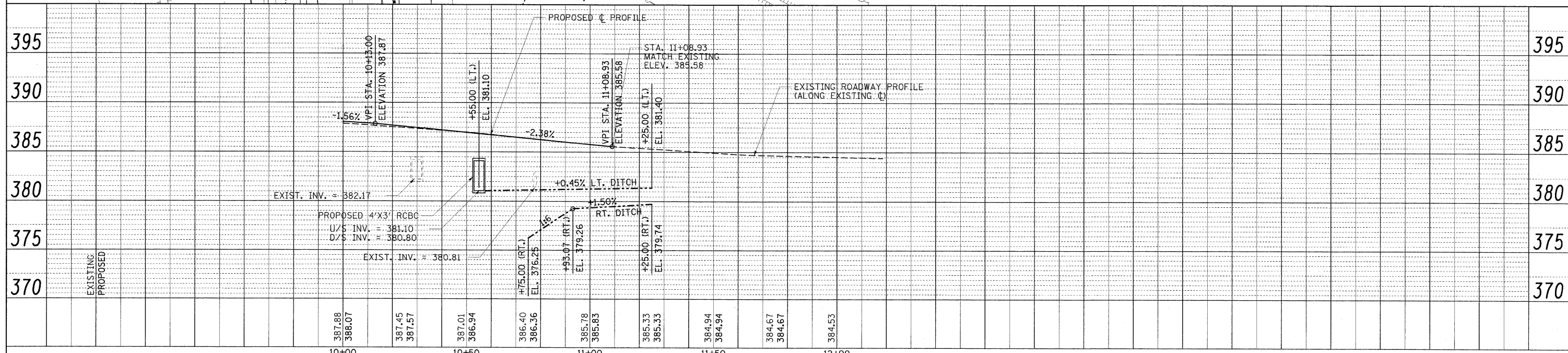
PLAN	SURVEYED	DATE
	PLOTTED	BY
	CHECKED	
	RT. OF WAY CHECKED	
	NO. CAD FILE NAME	

PLAN	SURVEYED	DATE
	PLOTTED	BY
	CHECKED	
	RT. OF WAY CHECKED	
	NO. CAD FILE NAME	



- NOTES: 1. SEE ALIGNMENT SHEETS FOR BENCHMARK AND CONTROL POINT INFORMATION.
2. SEE ROW PLAN FOR LOCATIONS OF PROPOSED EASEMENTS AND ROW.

GAIL DENNY C/O BRETT DENNY
05-020-014-00



FILE NAME = ...D978801-shr-plnpr-f204.dgn	USER NAME = Rob Heady	DESIGNED - JMM	REVISED -	STATE OF ILLINOIS DEPARTMENT OF TRANSPORTATION	PLAN AND PROFILE PIOPOLIS RD. (C.H. 20) F.A.P. ROUTE 776 (IL. RTE. 242)	F.A.P. RTE. 776	SECTION 102B-2	COUNTY HAMILTON	TOTAL SHEETS 42	SHEET NO. 13	
PLLOT SCALE = 20.0000' / IN.	CHECKED - JMM	REVISIED -	SCALE:			SHEET NO. 3 OF 3 SHEETS	STA. 10+00 TO STA. 12+00	FED. ROAD DIST. NO. 7	ILLINOIS FED. AID PROJECT	CONTRACT NO. 78081	
PLLOT DATE = 5/21/2010	DATE - APRIL 2010	REVISIED -									