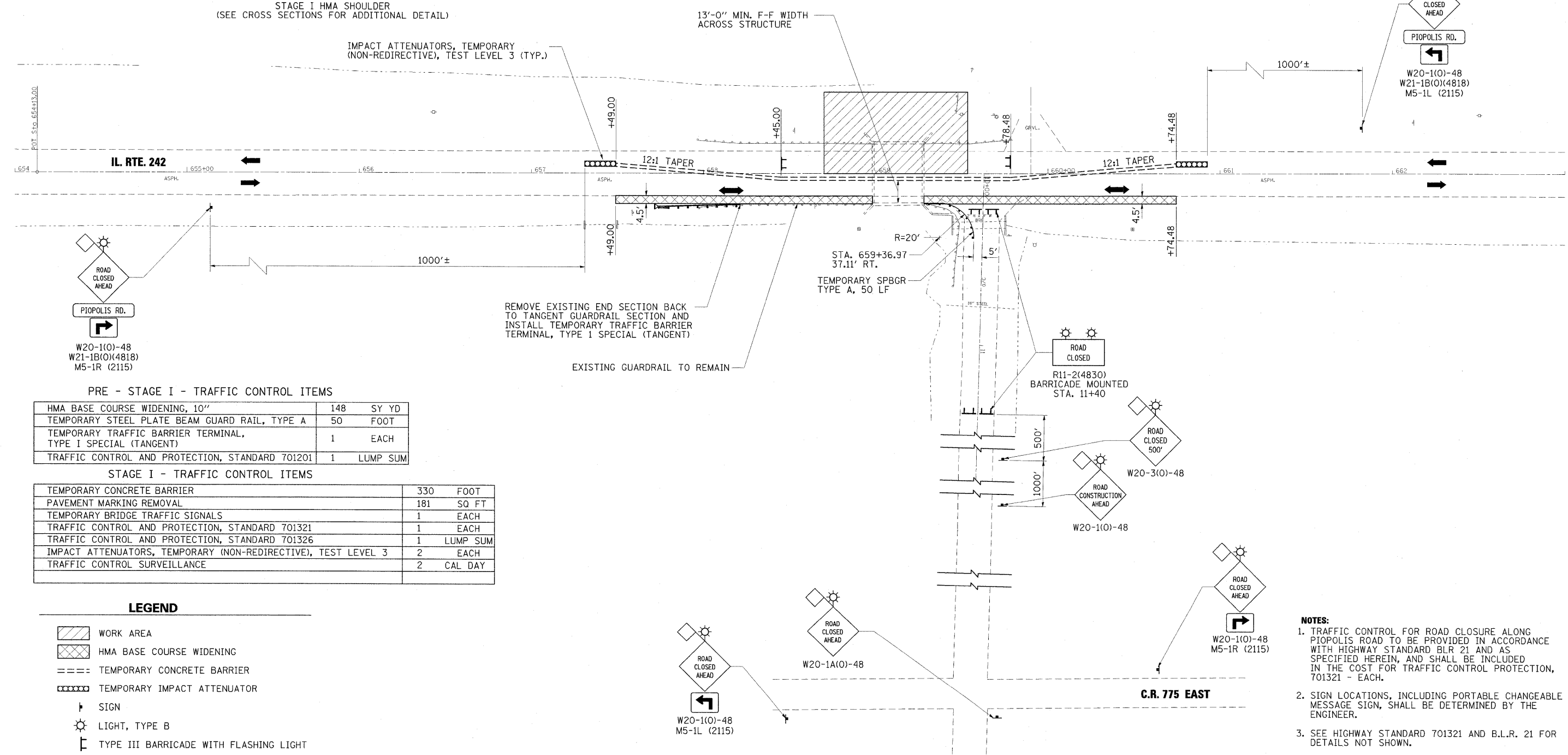


TYPICAL SECTION - STAGE I
STAGE I HMA SHOULDER
(SEE CROSS SECTIONS FOR ADDITIONAL DETAIL)



PRE - STAGE I - TRAFFIC CONTROL ITEMS

HMA BASE COURSE WIDENING, 10"	148	SY YD
TEMPORARY STEEL PLATE BEAM GUARD RAIL, TYPE A	50	FOOT
TEMPORARY TRAFFIC BARRIER TERMINAL, TYPE I SPECIAL (TANGENT)	1	EACH
TRAFFIC CONTROL AND PROTECTION, STANDARD 701201	1	LUMP SUM

STAGE I - TRAFFIC CONTROL ITEMS

TEMPORARY CONCRETE BARRIER	330	FOOT
PAVEMENT MARKING REMOVAL	181	SQ FT
TEMPORARY BRIDGE TRAFFIC SIGNALS	1	EACH
TRAFFIC CONTROL AND PROTECTION, STANDARD 701321	1	EACH
TRAFFIC CONTROL AND PROTECTION, STANDARD 701326	1	LUMP SUM
IMPACT ATTENUATORS, TEMPORARY (NON-REDIRECTIVE), TEST LEVEL 3	2	EACH
TRAFFIC CONTROL SURVEILLANCE	2	CAL DAY

LEGEND

- WORK AREA
- HMA BASE COURSE WIDENING
- TEMPORARY CONCRETE BARRIER
- TEMPORARY IMPACT ATTENUATOR
- SIGN
- LIGHT, TYPE B
- TYPE III BARRICADE WITH FLASHING LIGHT

- NOTES:**
- TRAFFIC CONTROL FOR ROAD CLOSURE ALONG PIOPOLIS ROAD TO BE PROVIDED IN ACCORDANCE WITH HIGHWAY STANDARD BLR 21 AND AS SPECIFIED HEREIN, AND SHALL BE INCLUDED IN THE COST FOR TRAFFIC CONTROL PROTECTION, 701321 - EACH.
 - SIGN LOCATIONS, INCLUDING PORTABLE CHANGEABLE MESSAGE SIGN, SHALL BE DETERMINED BY THE ENGINEER.
 - SEE HIGHWAY STANDARD 701321 AND B.L.R. 21 FOR DETAILS NOT SHOWN.