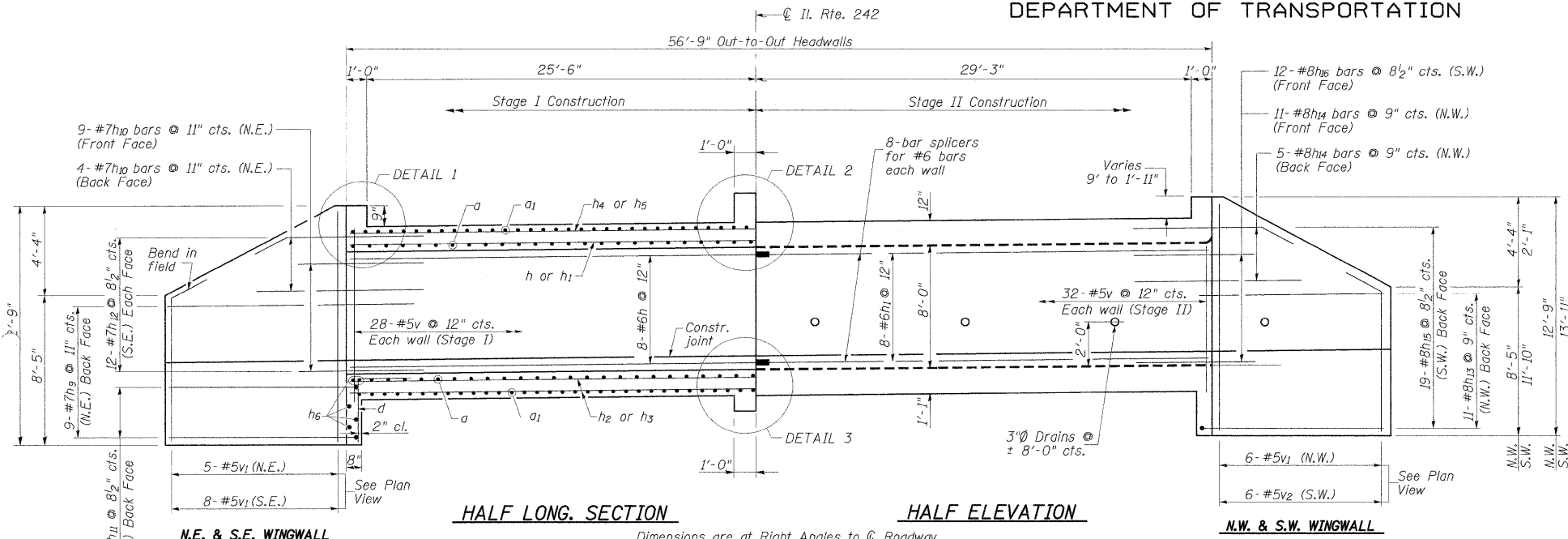


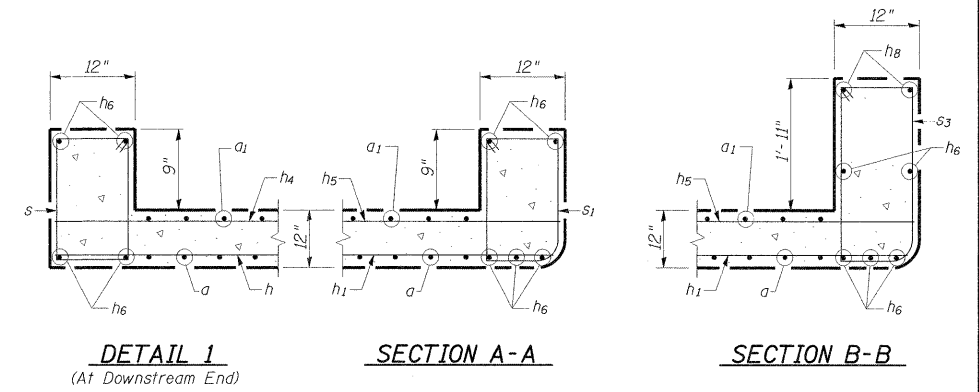
STATE OF ILLINOIS
DEPARTMENT OF TRANSPORTATION



HALF LONG SECTION

HALF ELEVATION

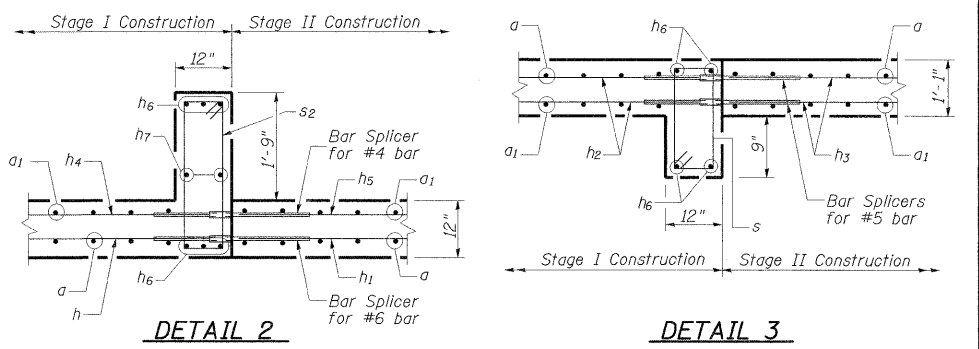
Dimensions are at Right Angles to \odot Roadway



DETAIL 1
(At Downstream End)

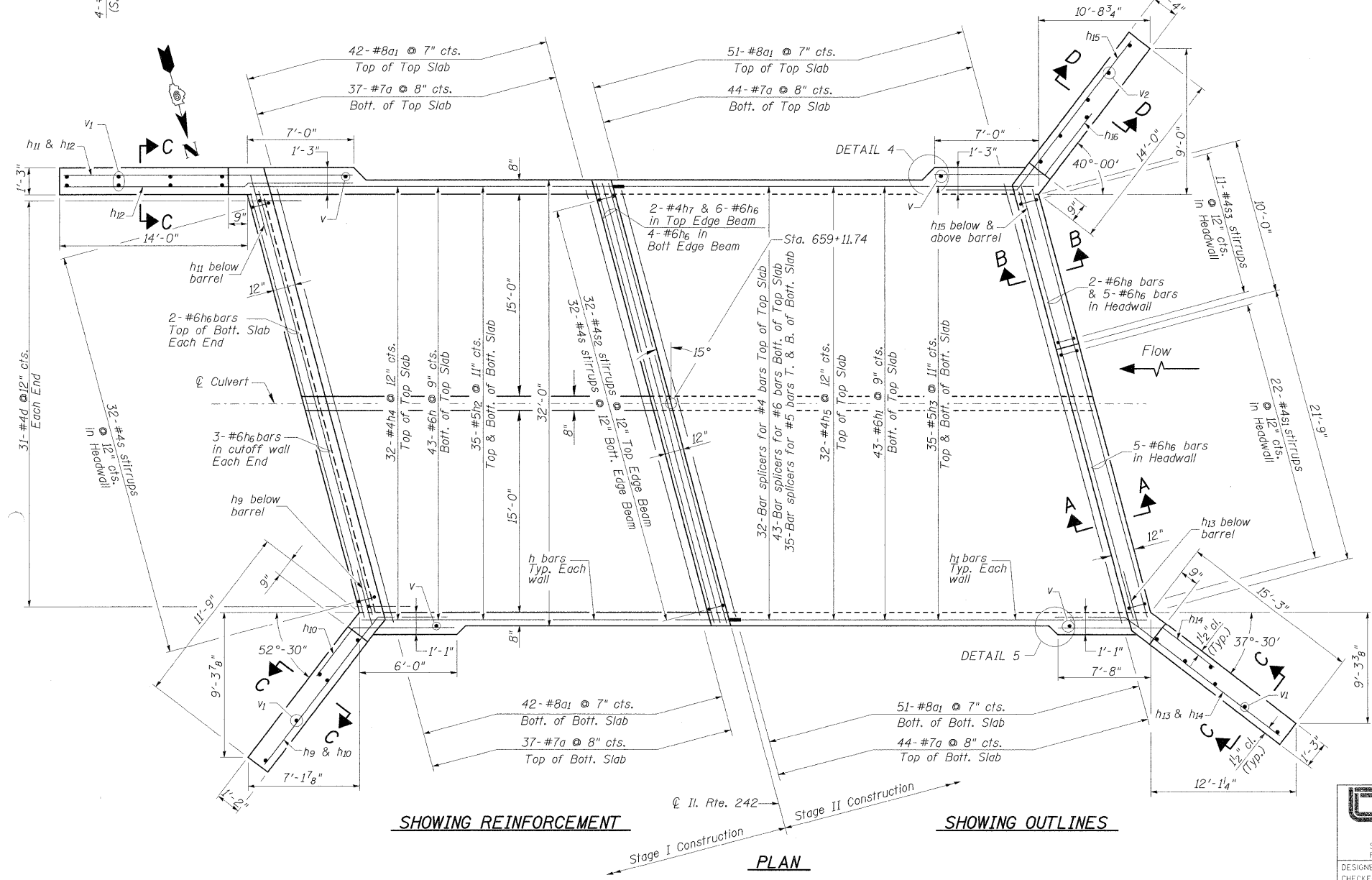
SECTION A-A

SECTION B-B



DETAIL 2

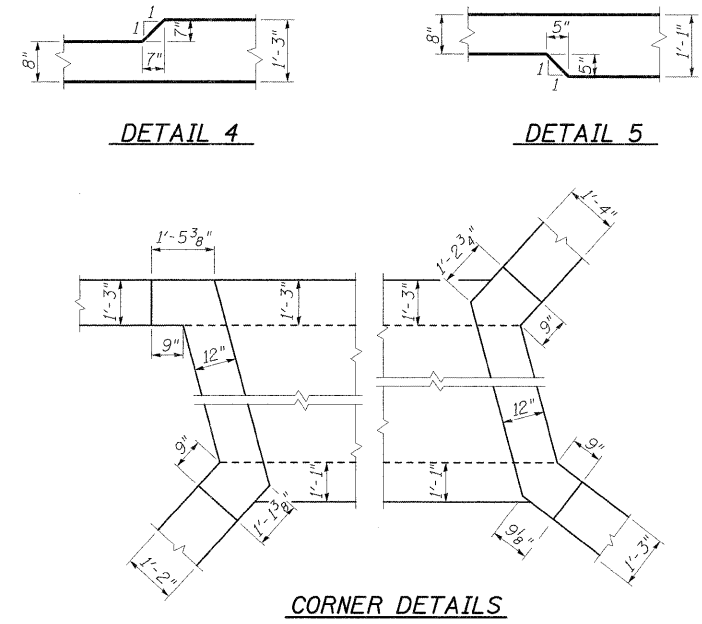
DETAIL 3



SHOWING REINFORCEMENT

SHOWING OUTLINES

PLAN



DETAIL 4

DETAIL 5

CORNER DETAILS

NOTES:

1. A distance of half the length of the wingwall but not less than six feet of the barrel shall be poured monolithically with the wingwalls.
2. See Sheet 5 of 8 for Section thru barrel, Section C-C, Section D-D and Culvert Bill of Material.
3. See Sheet 5 of 8 for West Headwall Elevation.

BOX CULVERT DETAILS - 1
IL RTE. 242 OVER UNNAMED STREAM
STATION 659+11.74
STRUCTURE NO. 033-2010

<p>CRAWFORD MURPHY & TILLY, INC. CONSULTING ENGINEERS SPRINGFIELD, IL ■ AURORA, IL ■ ST. LOUIS, MO ROCKFORD, IL ■ PEORIA, IL ■ CHICAGO, IL</p> <p>DESIGNED BY: CJW CHECKED BY: WLB</p>	SHEET NO. 4 8 SHEETS	F.A.P. RTE. 776 SECTION 102B-4	COUNTY HAMILTON CONTRACT NO. 78081	TOTAL SHEETS 42 SHEET NO. 24
	FED. ROAD DIST. NO. 7 ILLINOIS FED. AID PROJECT			