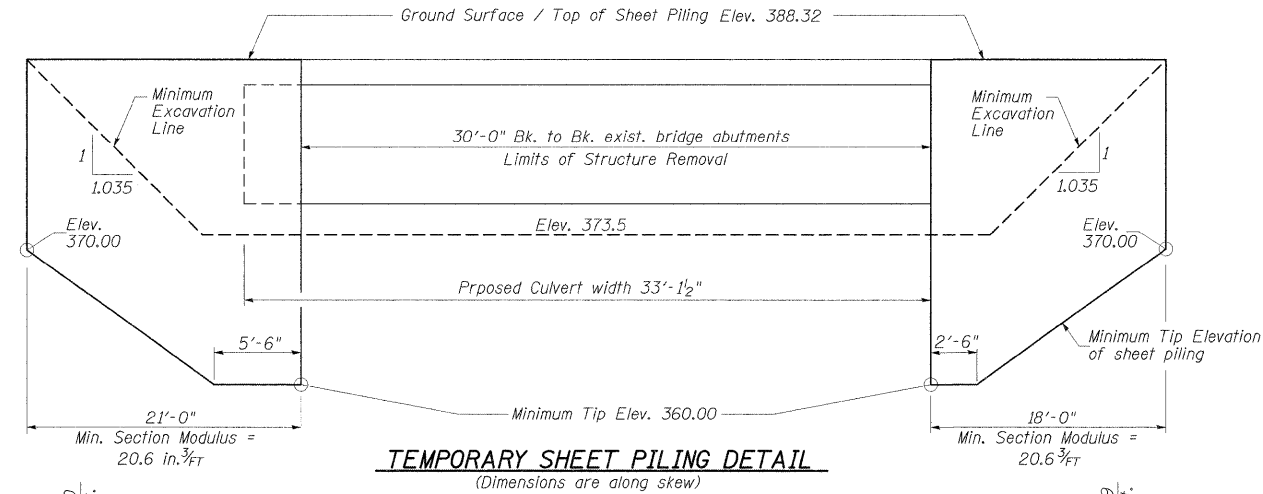
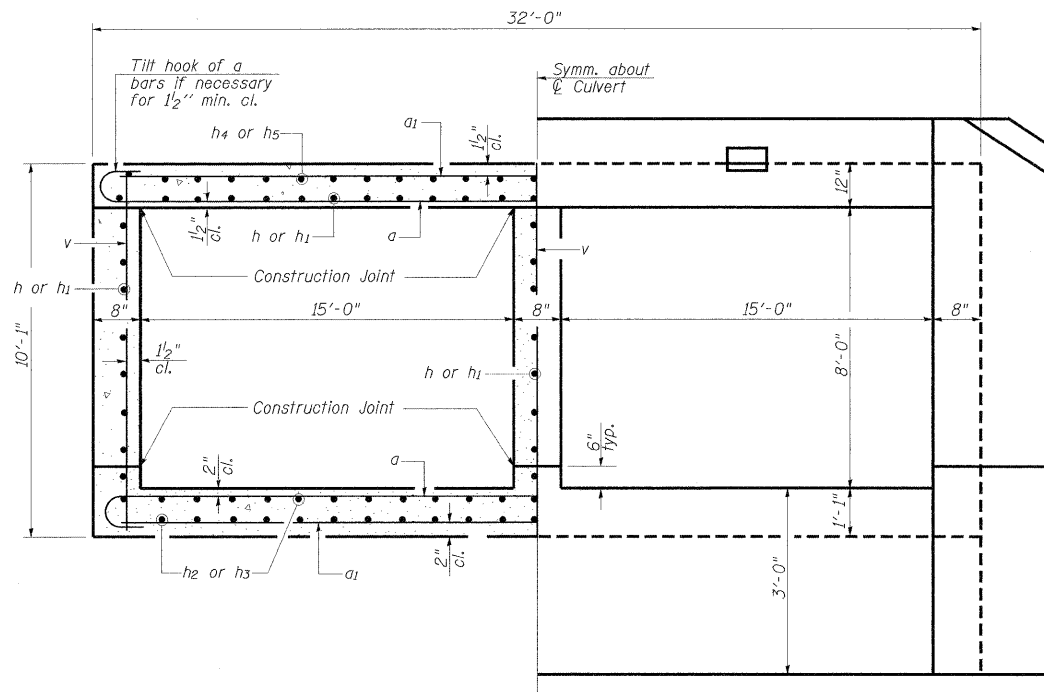
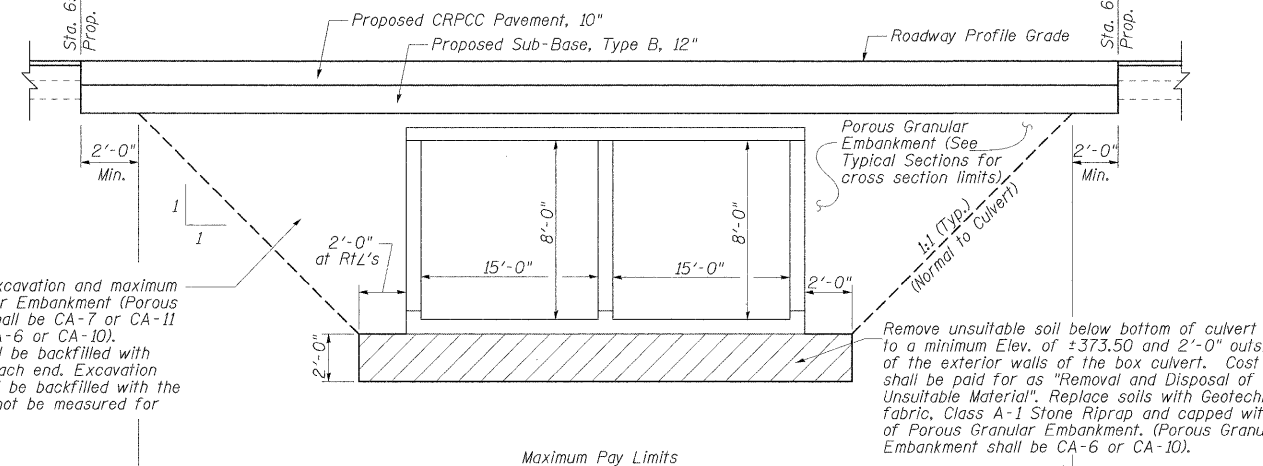


STATE OF ILLINOIS
DEPARTMENT OF TRANSPORTATION



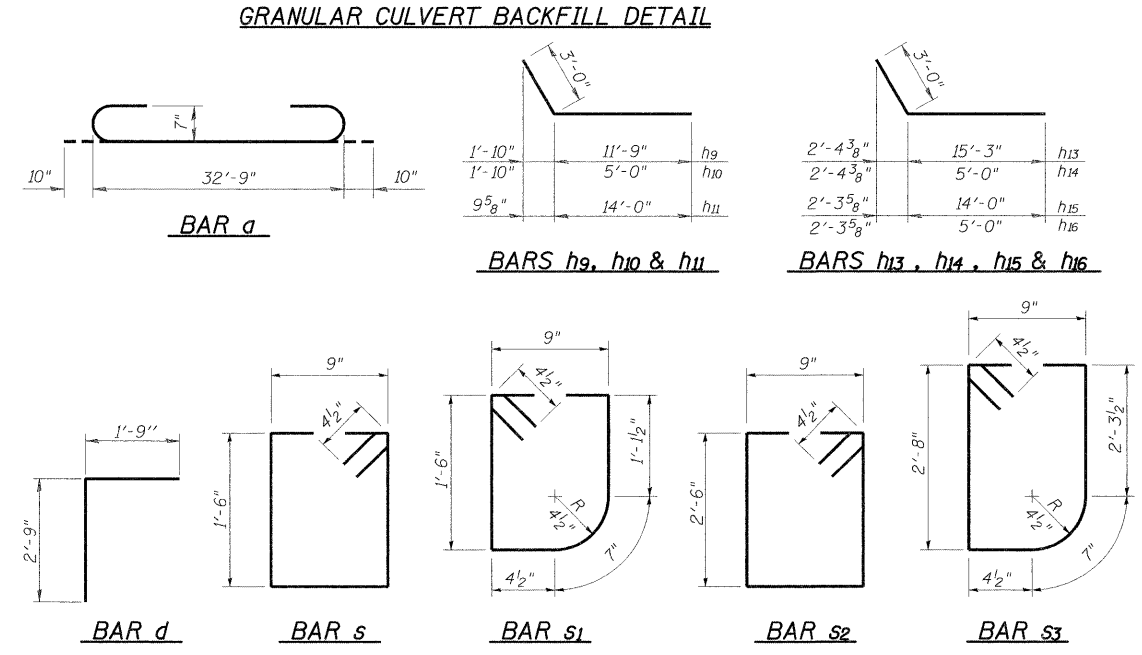
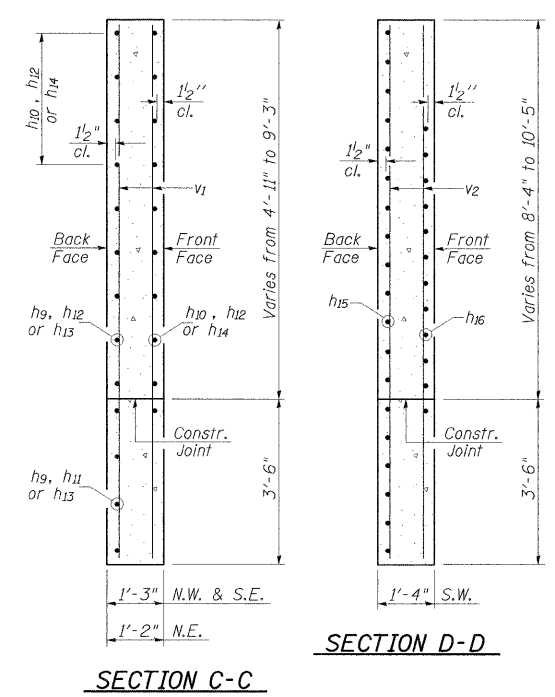
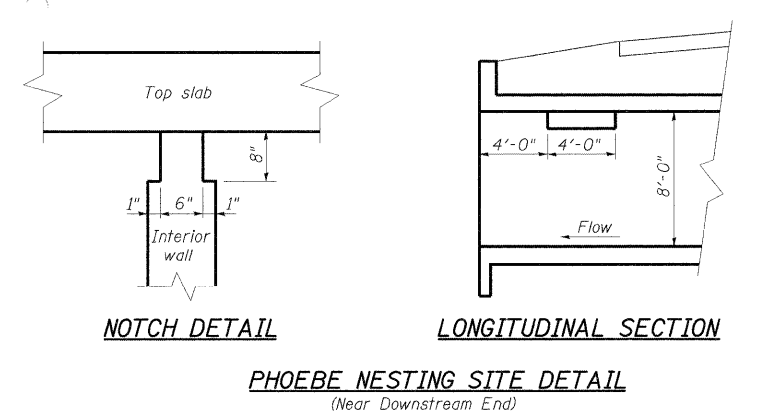
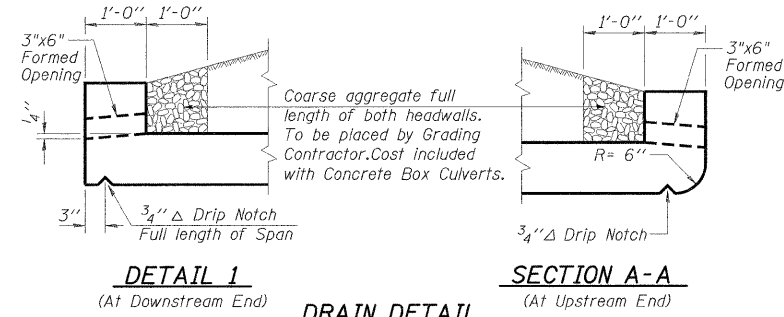
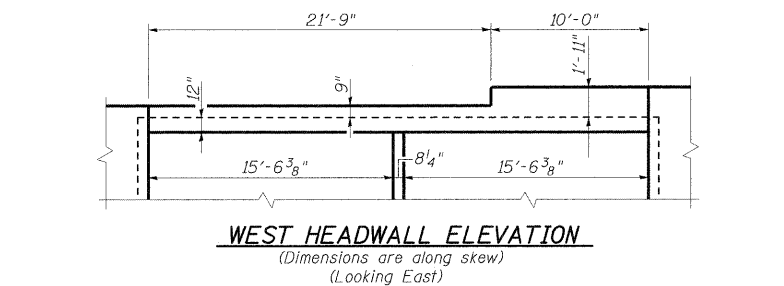
BILL OF MATERIAL

Bar	No.	Size	Length	Shape
a	162	#7	34'-5"	□
a1	186	#8	32'-9"	□
d	64	#4	4'-6"	□
h	67	#6	27'-1"	□
h1	67	#6	30'-11"	□
h2	70	#5	27'-1"	□
h3	70	#5	30'-11"	□
h4	32	#4	27'-10"	□
h5	32	#4	30'-11"	□
h6	29	#6	32'-10"	□
h7	2	#4	32'-10"	□
h8	2	#6	10'-10"	□
h9	9	#7	14'-9"	□
h10	13	#7	8'-0"	□
h11	4	#7	17'-0"	□
h12	24	#7	20'-9"	□
h13	11	#8	18'-3"	□
h14	16	#8	8'-0"	□
h15	19	#8	17'-0"	□
h16	12	#8	8'-0"	□
s	64	#4	5'-3"	□
s1	22	#4	5'-1"	□
s2	32	#4	7'-3"	□
s3	11	#4	7'-5"	□
v	184	#5	9'-10"	□
v1	19	#5	12'-5"	□
v2	6	#5	13'-7"	□
Porous Granular Embankment				Cu. Yd. 542
Reinforcement Bars				Pound 47,030
Concrete Box Culverts				Cu. Yd. 222.1
Bar Splicers				Each 169
Structure Excavation				Cu. Yd. 312



NOTES:

1. Work this sheet with sheet 4 of 8.
2. If the Contractor chooses to alter the temporary cantilevered sheet piling design requirements shown on the plans, a design submittal including plan details and calculations will be required for review and acceptance by the Engineer.
3. The Contractor shall connect the first sheet to the existing abutment wall to ensure stability of sheets driven to the top of the existing footing. This connection shall be reviewed and accepted by the Engineer and included in the cost for Temporary Sheet Piling.



BOX CULVERT DETAILS - 2
IL RTE. 242 OVER UNNAMED STREAM
STATION 659+11.74
STRUCTURE NO. 033-2010

<p>CRAWFORD MURPHY & TILLY, INC. CONSULTING ENGINEERS SPRINGFIELD, IL ■ AURORA, IL ■ ST. LOUIS, MO ROCKFORD, IL ■ PEORIA, IL ■ CHICAGO, IL</p>	SHEET NO. 5	F.A.P. RTE. 776	SECTION 102B-4	COUNTY HAMILTON	TOTAL SHEETS 42	SHEET NO. 25
	8 SHEETS	FED. ROAD DIST. NO. 7 ILLINOIS		FED. AID PROJECT		