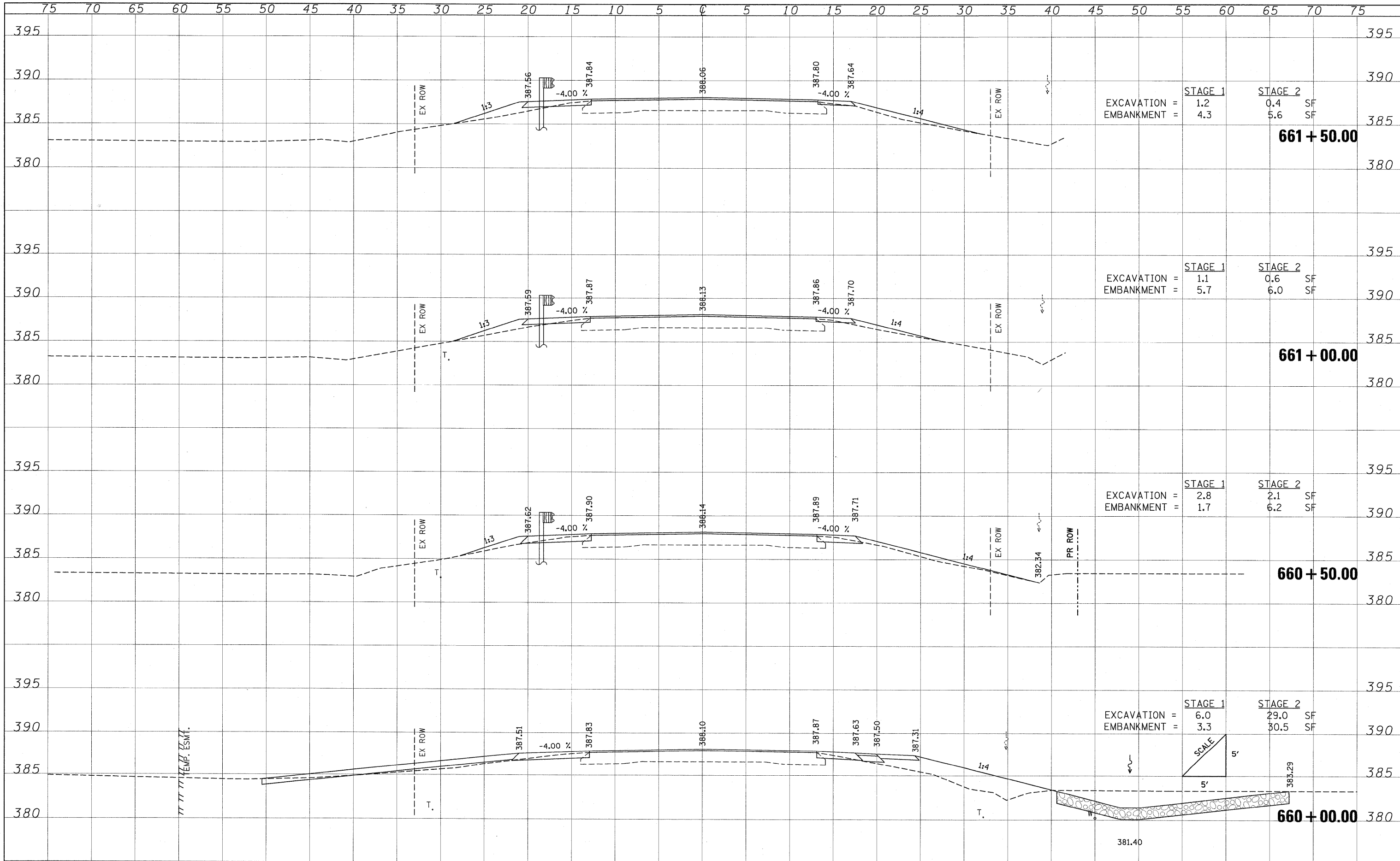


DATE	BY
SURVEYED	PLOTTED
NOTE BOOK	AREAS CHECKED
NO.	

DATE	BY
SURVEYED	PLOTTED
NOTE BOOK	AREAS CHECKED
NO.	



EXCAVATION =	STAGE 1	STAGE 2
EMBANKMENT =	1.2	0.4 SF
	4.3	5.6 SF

EXCAVATION =	STAGE 1	STAGE 2
EMBANKMENT =	1.1	0.6 SF
	5.7	6.0 SF

EXCAVATION =	STAGE 1	STAGE 2
EMBANKMENT =	2.8	2.1 SF
	1.7	6.2 SF

EXCAVATION =	STAGE 1	STAGE 2
EMBANKMENT =	6.0	29.0 SF
	3.3	30.5 SF

FILE NAME =	USER NAME = OpenH8B Springfield	DESIGNED - BMB	REVISED -
L:\DOT\0706610\WO_5\Draw\Sheets\0978081-sht.dgn		DRAWN - MJO	REVISED -
		CHECKED - JMM	REVISED -
		DATE - APRIL 2010	REVISED -

**STATE OF ILLINOIS  
DEPARTMENT OF TRANSPORTATION**

<b>CROSS SECTIONS F.A.P. ROUTE 776 (IL ROUTE 242)</b>			
SCALE:	SHEET NO. OF SHEETS	STA. 660+00.00 TO STA. 661+50.00	

F.A.P. RTE. 776	SECTION 102B-4	COUNTY HAMILTON	TOTAL SHEETS 42	SHEET NO. 37
			CONTRACT NO. 78081	
ILLINOIS FED. AID PROJECT				