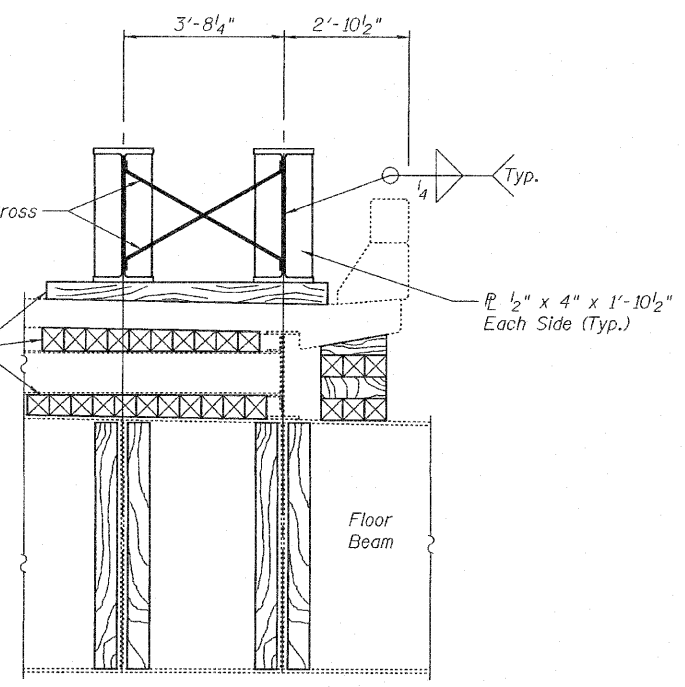
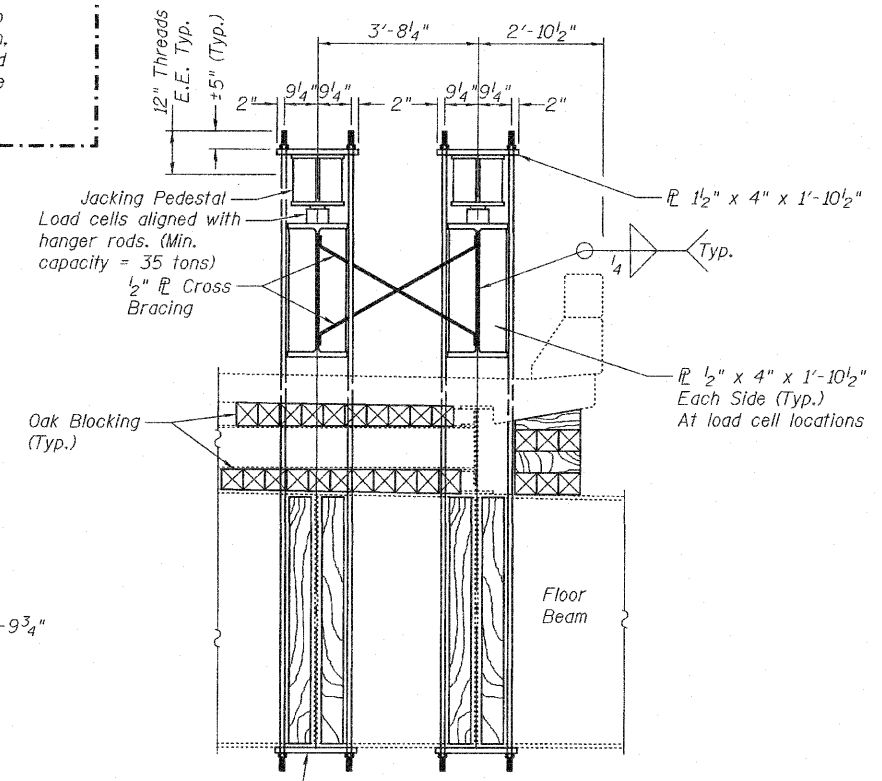


FLOORBEAM TEMPORARY SUPPORT ELEVATION
(Looking West)

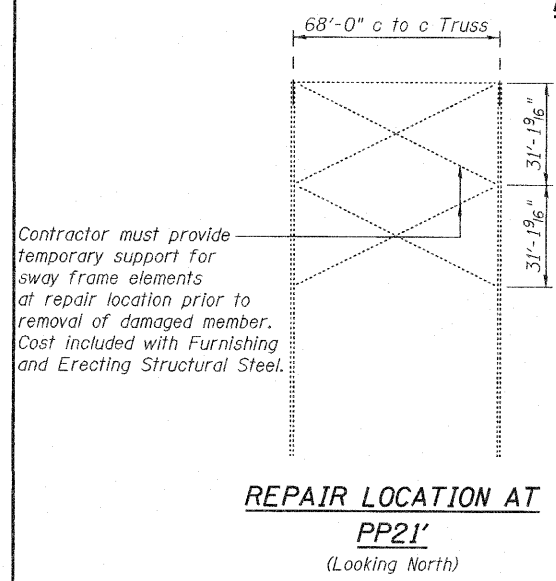
Note:
Temporary support system for the floorbeam at L21' shown on this sheet is a suggested one. The design of the temporary support system accounts for dead loads from the bridge and did not include the effect of the contractor's equipment or materials. The contributing area used to design the temporary support system, is defined by the limits between the east and west trusses between panel points L20' and L22'. If the Contractor elects to use a different system or places any construction equipment or materials within the limits contributing to the design of the floorbeam temporary support system, plans shall be submitted to the Bureau of Bridges and Structures for approval prior to commencement of the removal and replacement of the damaged M21'-U21' vertical member.



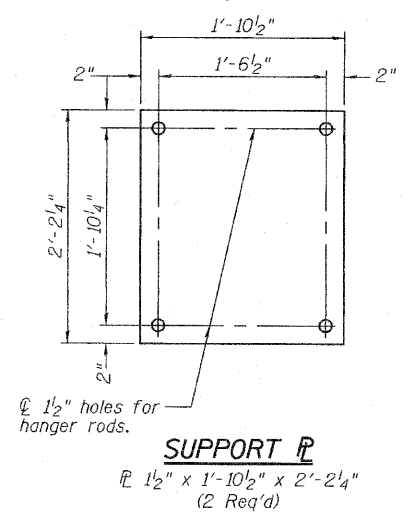
SECTION A-A
(L20' and L22')



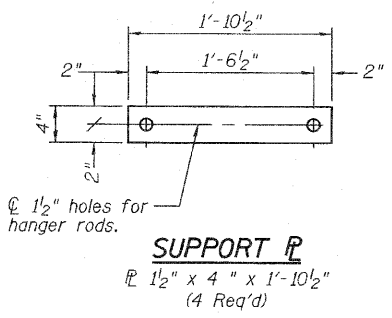
SECTION B-B
(L21')



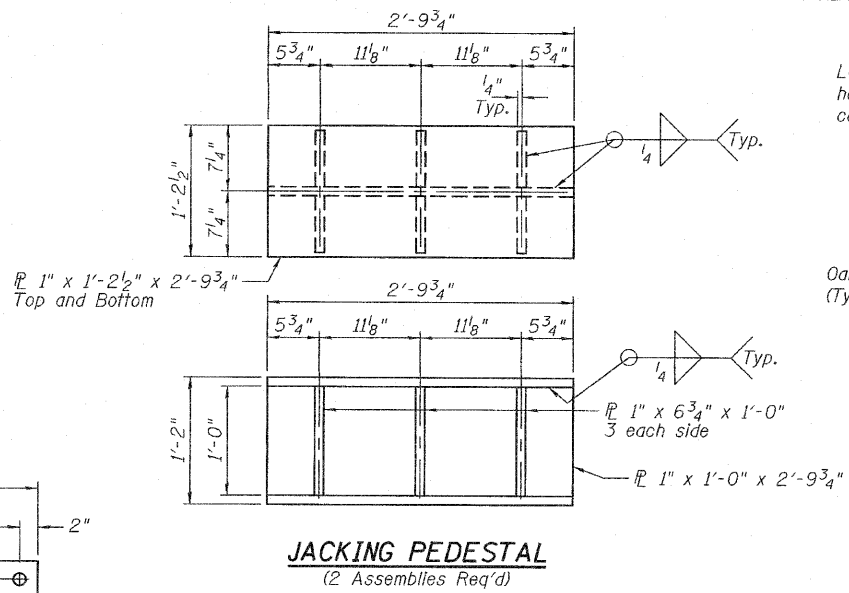
REPAIR LOCATION AT PP21'
(Looking North)



SUPPORT PLATE
(2 Req'd)



SUPPORT PLATE
(4 Req'd)



JACKING PEDESTAL
(2 Assemblies Req'd)

DESIGNED - I.J.L.
CHECKED - G.G.E.
DRAWN - **Drew Christopher**
CHECKED - I.J.L. G.G.E.

EXAMINED - *Carl Hoyer*
PASSED - *Ralph E. Anderson*
ENGINEER OF STRUCTURAL SERVICES
ENGINEER OF BRIDGES AND STRUCTURES

DATE - August 11, 2010

STATE OF ILLINOIS
DEPARTMENT OF TRANSPORTATION

TEMP SUPPORT DETAILS
SN 002-0022

SHEET NO. 2 OF 6 SHEETS

F.A. RTE. 57	SECTION D9 Bridge Repair 2010-1	COUNTY Alexander	TOTAL SHEETS 10	SHEET NO. 6
CONTRACT NO. 78220				

SLT-99-001-10

Revised Sheet 09/07/10 V.H.V. M.A.C.