

REPAIR LOCATION AT

PP19

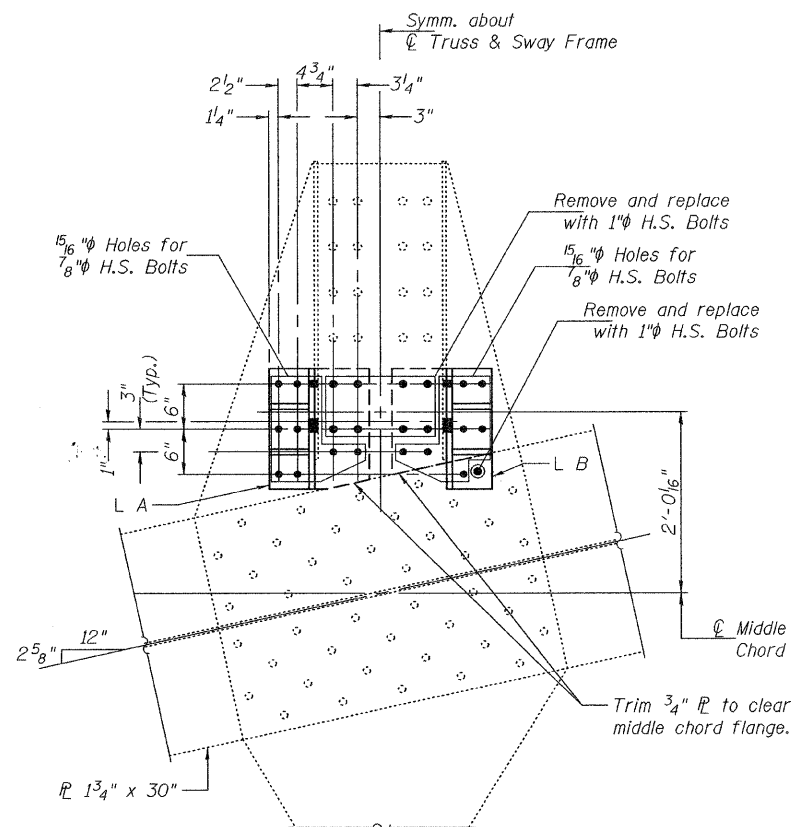
(Looking North)

DIMENSION "A"

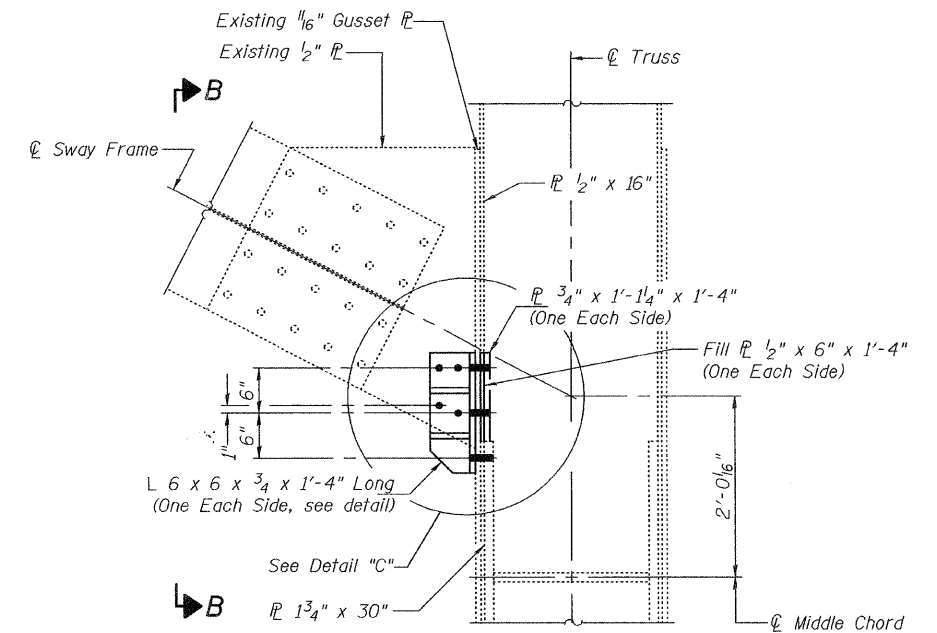
PP19 = 35'-2⁵/₁₆"

ANGLE "α"

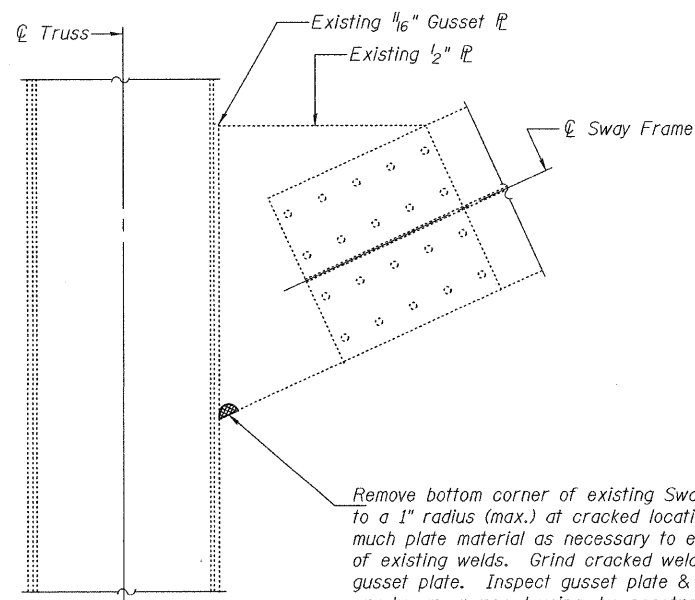
PP19 = 27.361°



VIEW B-B
(Looking East)

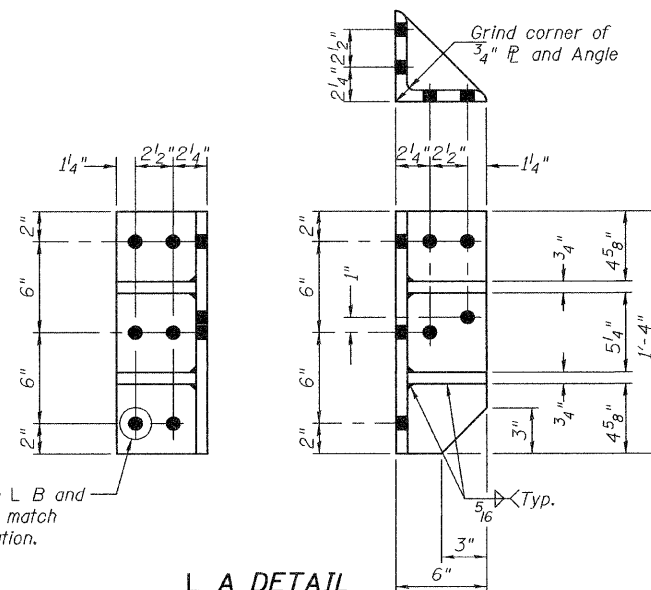


ELEVATION
(Looking North)



DETAIL "C"

Remove bottom corner of existing Sway Brace Connection \bar{P} to a 1" radius (max.) at cracked locations. Only remove as much plate material as necessary to expose cracked portion of existing welds. Grind cracked weld material smooth against gusset plate. Inspect gusset plate & connection plate to ensure cracks are removed using dye penetrant or magnetic particle testing. Cost included with Structural Steel Repairs. Any cracks found in the gusset plate or connection plate shall be identified and reported to the Bureau of Bridges and Structures for further disposition. This work is to be done prior to any installation of repair angles and plates.



L A DETAIL
(L B Opp Hand and as noted)

SWAY BRACING RETROFIT AT LOCATION M19

(East Truss, 1 location)

Notes:
The cost of plates, angles, bolts and all field drilling required for installation of the steel members is included with Structural Steel Repair.
PP = Panel Point

BILL OF MATERIAL

Item	Unit	Quantity
Structural Steel Repair	Pound	230

DESIGNED - I.J.L.
CHECKED - G.G.E.
DRAWN - **Drew Christopher**
CHECKED - I.J.L. G.G.E.

EXAMINED *Carl Tracy*
ENGINEER OF STRUCTURAL SERVICES
PASSED *Ralph E. Anderson*
ENGINEER OF BRIDGES AND STRUCTURES

DATE - August 11, 2010

STATE OF ILLINOIS
DEPARTMENT OF TRANSPORTATION

SWAY FRAME DETAILS

SN 002-0022

SHEET NO. 4 OF 6 SHEETS

F.A. RTE.	SECTION	COUNTY	TOTAL SHEETS	SHEET NO.
57	BY BRIDGE REPAIR 2010-1	Alexander	10	8
CONTRACT NO. 78220			ILLINOIS FED. AID PROJECT	