

F.A.U. ROUTE.	SECTION	COUNTY	TOTAL SHEETS	SHEET NO.
SCHUYLER - F.A.U. 6201	08-00094-00-TL	KANKAKEE	13	11
BROADWAY - F.A.U. 6178			CONTRACT NO.: 87370	

SCHEDULE OF QUANTITIES
W. BROADWAY STREET AT SCHUYLER AVENUE

NO.	QUANT.	UNIT	DESCRIPTION
1.	1	L SUM	TRAFFIC CONTROL AND PROTECTION, STANDARD 701501
2.	1	L SUM	TRAFFIC CONTROL AND PROTECTION, STANDARD 701701
3.	1	L SUM	TRAFFIC CONTROL AND PROTECTION, STANDARD 701801
4.	8.00	SQ FT	SIGN PANEL - TYPE 1
5.	45.00	SQ FT	SIGN PANEL - TYPE 2
6.	30	FOOT	METAL POST - TYPE B
7.	231	FOOT	CONDUIT IN TRENCH, 1" DIA., PVC
8.	256	FOOT	CONDUIT IN TRENCH, 2" DIA., PVC
9.	13	FOOT	CONDUIT IN TRENCH, 2 1/2" DIA., PVC
10.	29	FOOT	CONDUIT IN TRENCH, 3" DIA., PVC
11.	20	FOOT	CONDUIT IN TRENCH, 4" DIA., PVC
12.	165	FOOT	CONDUIT PUSHED, 4" DIA., GALVANIZED STEEL
13.	390	FOOT	CONDUIT PUSHED, 2" DIA., PVC
14.	87	FOOT	CONDUIT PUSHED, 3" DIA., PVC
15.	6	EACH	HANDHOLE, PORTLAND CEMENT CONCRETE
16.	1	EACH	DOUBLE HANDHOLE, PORTLAND CEMENT CONCRETE
17.	252	FOOT	ELECTRIC CABLE IN CONDUIT, 600V (KLP-TYPE USE) 3-1/C NO. 10
18.	288	FOOT	TRENCH AND BACKFILL FOR ELECTRICAL WORK
19.	2	EACH	LUMINAIRE, SODIUM VAPOR, HORIZONTAL MOUNT, 250 WATT
20.	1	EACH	FULL-ACTUATED CONTROLLER AND TYPE IV CABINET, SPECIAL
21.	138	FOOT	ELECTRIC CABLE IN CONDUIT, SIGNAL NO. 14 2C
22.	152	FOOT	ELECTRIC CABLE IN CONDUIT, SIGNAL NO. 14 3C
23.	1,410	FOOT	ELECTRIC CABLE IN CONDUIT, SIGNAL NO. 14 5C
24.	183	FOOT	ELECTRIC CABLE IN CONDUIT, SIGNAL NO. 14 7C
25.	1,628	FOOT	ELECTRIC CABLE IN CONDUIT, LEAD-IN, NO. 14 1 PAIR
26.	98	FOOT	ELECTRIC CABLE IN CONDUIT, SERVICE, NO. 6 2 C
27.	1	EACH	TRAFFIC SIGNAL POST, GALVANIZED STEEL 16 FT.
28.	1	EACH	STEEL MAST ARM ASSEMBLY AND POLE, 26 FT.
29.	1	EACH	STEEL COMBINATION MAST ARM ASSEMBLY AND POLE 26 FT.
30.	1	EACH	STEEL COMBINATION MAST ARM ASSEMBLY AND POLE 44 FT.
31.	8	FOOT	CONCRETE FOUNDATION, TYPE A
32.	4	FOOT	CONCRETE FOUNDATION, TYPE C (SPECIAL)
33.	30	FOOT	CONCRETE FOUNDATION, TYPE E 30-INCH DIAMETER (SPECIAL)
34.	15	FOOT	CONCRETE FOUNDATION, TYPE E 36-INCH DIAMETER
35.	4	EACH	SIGNAL HEAD, POLYCARBONATE LED, 1-FACE, 3-SECTION, BRACKET MOUNTED
36.	5	EACH	SIGNAL HEAD, POLYCARBONATE LED, 1-FACE, 3-SECTION, MAST ARM MOUNTED
37.	1	EACH	SIGNAL HEAD, POLYCARBONATE LED, 1-FACE, 5-SECTION, BRACKET MOUNTED
38.	1	EACH	SIGNAL HEAD, POLYCARBONATE LED, 1-FACE, 5-SECTION, MAST ARM MOUNTED
39.	2	EACH	PEDESTRIAN SIGNAL HEAD, LED, 1-FACE, BRACKET MOUNTED WITH COUNTDOWN TIMER
40.	11	EACH	TRAFFIC SIGNAL BACKPLATE, LOUVERED, FORMED PLASTIC
41.	9	EACH	INDUCTIVE LOOP DETECTOR
42.	1,002	FOOT	DETECTOR LOOP, TYPE I
43.	2	EACH	LIGHT DETECTOR
44.	1	EACH	LIGHT DETECTOR AMPLIFIER
45.	2	EACH	PEDESTRIAN PUSH-BUTTON
46.	85	CAL DA	PORTABLE, VEHICLE MOUNTED, CHANGEABLE MESSAGE BOARD
47.	1	EACH	SERVICE INSTALLATION - GROUND MOUNTED
48.	1	EACH	UNINTERRUPTIBLE POWER SUPPLY
49.	374	FOOT	ELECTRIC CABLE IN CONDUIT, GROUNDING, NO. 6 1C
50.	250	FOOT	ELECTRIC CABLE IN CONDUIT NO. 20 3/C, TWISTED, SHIELDED

Restoration of Work Area. Restoration of the traffic signal work area shall be incidental to the related pay items such as foundation, conduit, handhole, trench and backfill, etc., and no extra compensation shall be allowed. All roadway surfaces such as shoulders, medians, sidewalks, pavement, etc. shall be replaced in kind. All damage to mowed lawns shall be replaced with an approved sod, and all damage to unmowed fields shall be seeded in accordance with Standard Specifications 252 and 250 respectively.

ELECTRICAL LOAD CHART

SCHUYLER AVE			
SIGNAL SECTION	NUMBER	WATTAGE EACH	BURN TIME %
RED	7	17	20
YELLOW	7	25	5
GREEN	7	15	75
YELLOW ARROW	2	12	5
GREEN ARROW	2	12	5
PEDESTRIAN	0	25	100

BROADWAY ST			
SIGNAL SECTION	NUMBER	WATTAGE EACH	BURN TIME %
RED	4	12	20
YELLOW	0	25	5
GREEN	0	15	75
YELLOW ARROW	4	12	5
GREEN ARROW	4	12	5
PEDESTRIAN	2	25	100

TRAFFIC SIGNAL CABINET			
ITEM	NUMBER	WATTAGE EACH	BURN TIME %
CONTROLLER	1	100	100
LOOP DETECTORS	9	4	100

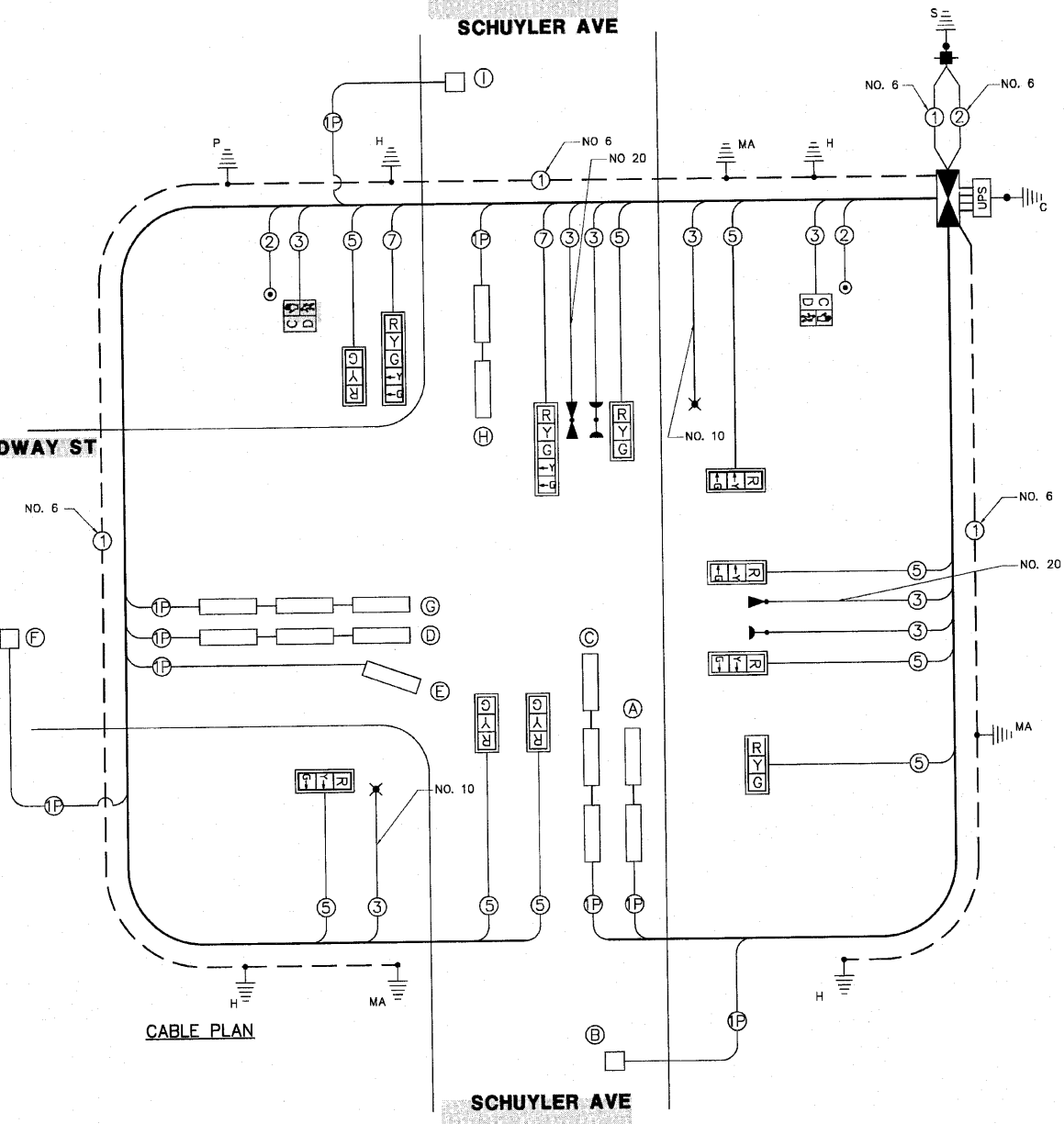
LUMINAIRE			
ITEM	NUMBER	WATTAGE EACH	BURN TIME %
LUMINAIRE	0	250	342 HRS/MO

THE TRAFFIC SIGNAL CONTROL EQUIPMENT FOR THIS PROJECT SHALL BE "EAGLE" OR EQUIVALENT

DETECTOR LOOP INDUCTANCE CHART

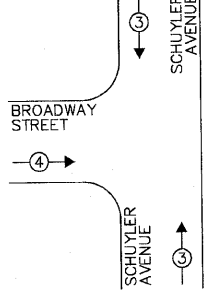
LOOP SYSTEM	LABEL	NO. OF TURNS	INDUCTANCE (MH)	FREQUENCY (HERTZ)	J PIN STATUS
A	02 NB STBR	4	544	26,167	OFF
B	02 NB FAR	6	314	34,443	ON
C	05 NB LT	4	814	21,392	ON
D	04 EB STBR	4	784	21,797	ON
E	04 EB STBR	4	264	37,563	ON
F	04 EB FAR	6	286	36,089	ON
G	07 EB LT	4	784	21,797	ON
H	06 SB STBR	4	545	26,144	OFF
I	06 SB FAR	6	320	34,118	ON

J PIN STATUS:
"ON" MEANS STANDARD DETECTOR SETUP.
"OFF" MEAN THE J WIRE HAS BEEN DISCONNECTED, BUT INTERACT AT THE HARNESS PANEL WITH THE NECESSARY SPARE CONNECTOR ATTACHED, MARKED AND INSULATED.



CABLE PLAN

PROPOSED EMERGENCY VEHICLE PREEMPTION SEQUENCE



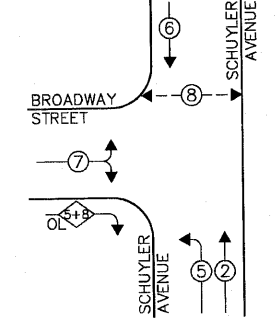
PROPOSED EMERGENCY VEHICLE PREEMPTORS		
EMERGENCY VEHICLE PREEMPTOR	3	4
MOVEMENT	↑	→

LUMINAIRE ENERGY CHARGES SHALL BE THE RESPONSIBILITY OF THE VILLAGE OF BRADLEY

CABLE PLAN LEGEND

EXISTING	PROPOSED	DESCRIPTION
⊗	⊗	8" (200mm) TRAFFIC SIGNAL SECTION
⊗	⊗	12" (300mm) TRAFFIC SIGNAL SECTION
⊗	⊗	12" (300mm) PEDESTRIAN SIGNAL SECTION WITH COUNTDOWN TIMER
⊗	⊗	CONTROLLER CABINET
⊗	⊗	SERVICE INSTALLATION
⊗	⊗	TELEPHONE
⊗	⊗	VEHICLE DETECTOR, INDUCTION LOOP
⊗	⊗	MAGNETIC DETECTOR
⊗	⊗	EMERGENCY VEHICLE LIGHT DETECTOR
⊗	⊗	CONFIRMATION BEACON
⊗	⊗	PUSHBUTTON DETECTOR
⊗	⊗	DENOTES NUMBER OF CONDUCTORS. ALL CABLE NO. 14 EXCEPT AS INDICATED. ALL LOOP DETECTOR CABLE TO BE SHIELDED.
⊗	⊗	GROUND CABLE IN CONDUIT NO.6 SOLID COPPER (GREEN)
⊗	⊗	FIBER OPTIC CABLE IN CONDUIT NO. 62.5/125 2-MM12F SM12F
⊗	⊗	SIGNAL FACE WITH BACKPLATE. "P" INDICATES PROGRAMMED HEAD
⊗	⊗	RAILROAD CONTROL CABINET
⊗	⊗	ILLUMINATED SIGN "NO LEFT TURN"
⊗	⊗	ILLUMINATED SIGN "NO RIGHT TURN"
H/C	C	GROUND ROD AT HANDHOLE (H), DOUBLE HANDHOLE (H), OR CONTROLLER (C)
P	P	GROUND ROD AT POST (P) OR MAST ARM POLE (MA)
S	S	GROUND ROD AT ELECTRIC SERVICE INSTALLATION
UPS	UPS	UNINTERRUPTIBLE POWER SUPPLY
X	X	LUMINAIRE

PROPOSED CONTROLLER SEQUENCE



PHASE DESIGNATION DIAGRAM

LEGEND:

← *	SINGLE ENTRY PHASE
← *	DUAL ENTRY PHASE
← *	PEDESTRIAN PHASE
*	NUMBER REFERS TO ASSOCIATED PHASE
← *	OVERLAP

GHA GEWALT HAMILTON ASSOCIATES, INC.
850 Forest Edge Drive • Vernon Hills, IL 60061

M. GINGERICH, GEREUX ASSOCIATES
240 N. Industrial Drive
Bradley, Illinois 60915
815-935-4921
FAX: 815-935-9810

REVISIONS

DATE	BY	DESCRIPTION
07-08-2010	JWG	PER IDOT REVIEW

ILLINOIS DEPARTMENT OF TRANSPORTATION
SCHEDULE OF QUANTITIES, CABLE PLAN,
& PHASE DESIGNATION DIAGRAM
BROADWAY STREET & SCHUYLER AVENUE
GHA #4140.805
SCALE: N.A. DRAWN BY: ZCW
DATE: 7/15/10 CHECKED BY: DPB