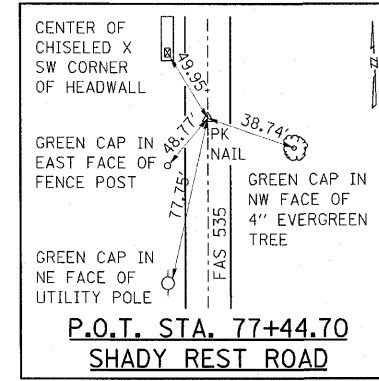
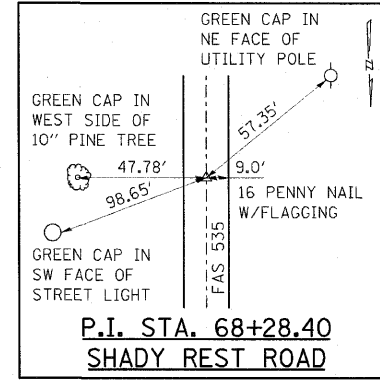
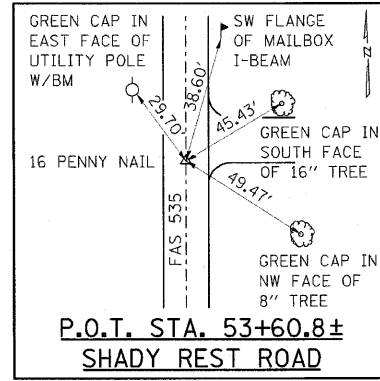
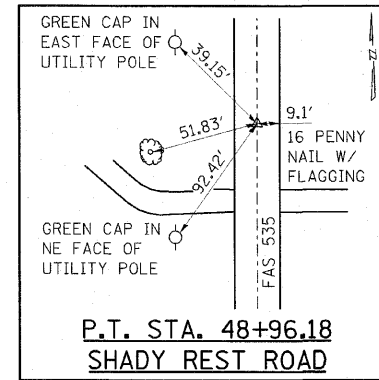
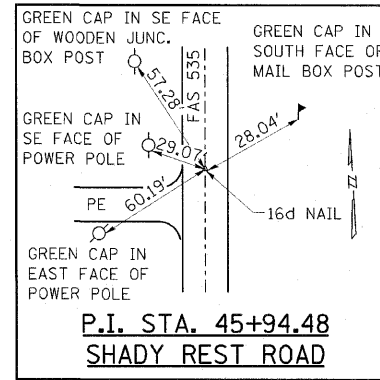
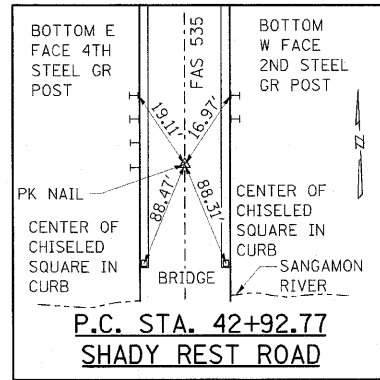
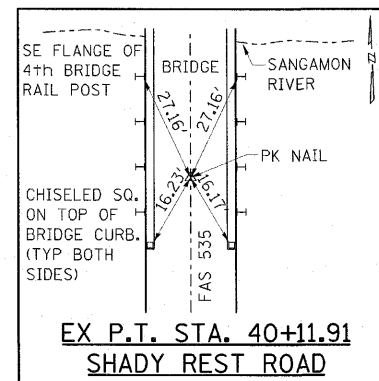
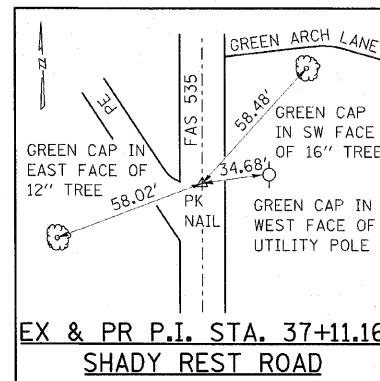
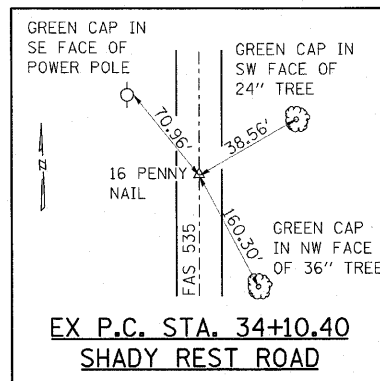
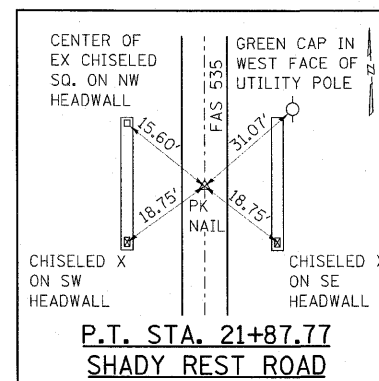
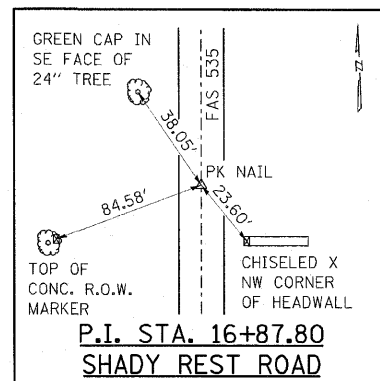
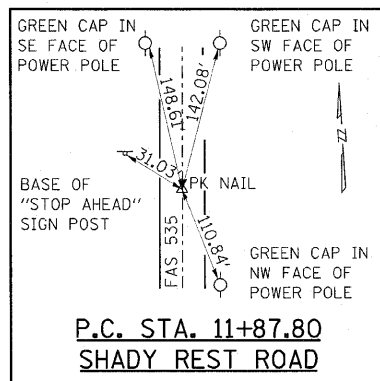




**SHADY REST ROAD BENCHMARKS**  
(IN ORDER FROM SOUTH TO NORTH)

|         |                                                                                         |
|---------|-----------------------------------------------------------------------------------------|
| BM #6   | RR SPIKE IN PP NW CORNER INTERSECTION OLD RTE 47 & SHADY REST ROAD, ELEV. 703.58        |
| BM #101 | RR SPIKE IN PP E SIDE SHADY REST ROAD 0.1 MI N OLD RTE 47, ELEV. 708.04                 |
| BM #102 | RR SPIKE IN PP E SIDE SHADY REST ROAD 0.18 MI N OLD RTE 47, ELEV. 703.49                |
| BM #103 | RR SPIKE IN PP E SIDE SHADY REST ROAD 0.28 MI N OLD RTE 47, ELEV. 690.57                |
| BM #104 | RR SPIKE IN 14" TREE W SIDE SHADY REST ROAD 0.36 MI N OLD RTE 47, ELEV. 672.91          |
| BM #105 | RR SPIKE IN PP W SIDE SHADY REST ROAD 0.46 MI N OLD RTE 47, ELEV. 661.45                |
| BM #106 | RR SPIKE IN PP W SIDE SHADY REST ROAD 0.51 MI N OLD RTE 47, ELEV. 653.16                |
| BM #114 | RR SPIKE IN PP W SIDE SHADY REST ROAD 0.58 MI N OLD RTE 47, ELEV. 649.51                |
| BM #107 | CHISELED SQUARE ON T/O HUBGUARD @ SW CORNER OF BRIDGE OVER SANGAMON RIVER, ELEV. 655.85 |
| BM #8   | CHISELED SQUARE ON T/O HUBGUARD @ NW CORNER OF BRIDGE OVER SANGAMON RIVER, ELEV. 655.89 |
| BM #108 | RR SPIKE IN PP W SIDE SHADY REST ROAD 0.79 MI N OLD RTE 47, ELEV. 654.41                |
| BM #109 | RR SPIKE IN PP W SIDE SHADY REST ROAD 0.89 MI N OLD RTE 47, ELEV. 656.07                |
| BM #9   | RR SPIKE IN PP W SIDE SHADY REST ROAD 0.92 MI N OLD RTE 47, ELEV. 666.01                |
| BM #110 | US ARMY CORPS OF ENGINEERS MONUMENT 1.01 MI N OLD RTE 47, ELEV. 675.57                  |
| BM #111 | RR SPIKE IN PP E SIDE SHADY REST ROAD 1.1 MI N OLD RTE 47, ELEV. 677.15                 |
| BM #112 | RR SPIKE IN PP W SIDE SHADY REST ROAD 1.2 MI N OLD RTE 47, ELEV. 682.71                 |
| BM #10  | RR SPIKE IN PP W SIDE SHADY REST ROAD 1.3 MI N OLD RTE 47, ELEV. 690.04                 |
| BM #113 | RR SPIKE IN PP W SIDE SHADY REST ROAD 1.4 MI N OLD RTE 47, ELEV. 688.02                 |



**CENTERLINE TIES**

**TIES & BENCHMARKS**  
**FAS 535 (SHADY REST ROAD)**  
**SECTION 08-00255-00-BR**  
**PIATT COUNTY**

|                     |          |                  |              |           |
|---------------------|----------|------------------|--------------|-----------|
| RTE                 | SECTION  | COUNTY           | TOTAL SHEETS | SHEET NO. |
| **                  | *        | PIATT            | 62           | 14        |
| STA.                | TO STA.  |                  |              |           |
| FED. ROAD DIST. NO. | ILLINOIS | FED. AID PROJECT |              |           |
| * 08-00255-00-BR    |          |                  |              |           |
| ** FAS 535          |          |                  |              |           |

**ESCA**  
CONSULTANTS, INC.

|              |     |       |
|--------------|-----|-------|
| DESIGNED BY: | ELH | 01/10 |
| DRAWN BY:    | HAS | 01/10 |
| CHECKED BY:  | ELH | 05/10 |
| APPROVED BY: | RDP | 05/10 |