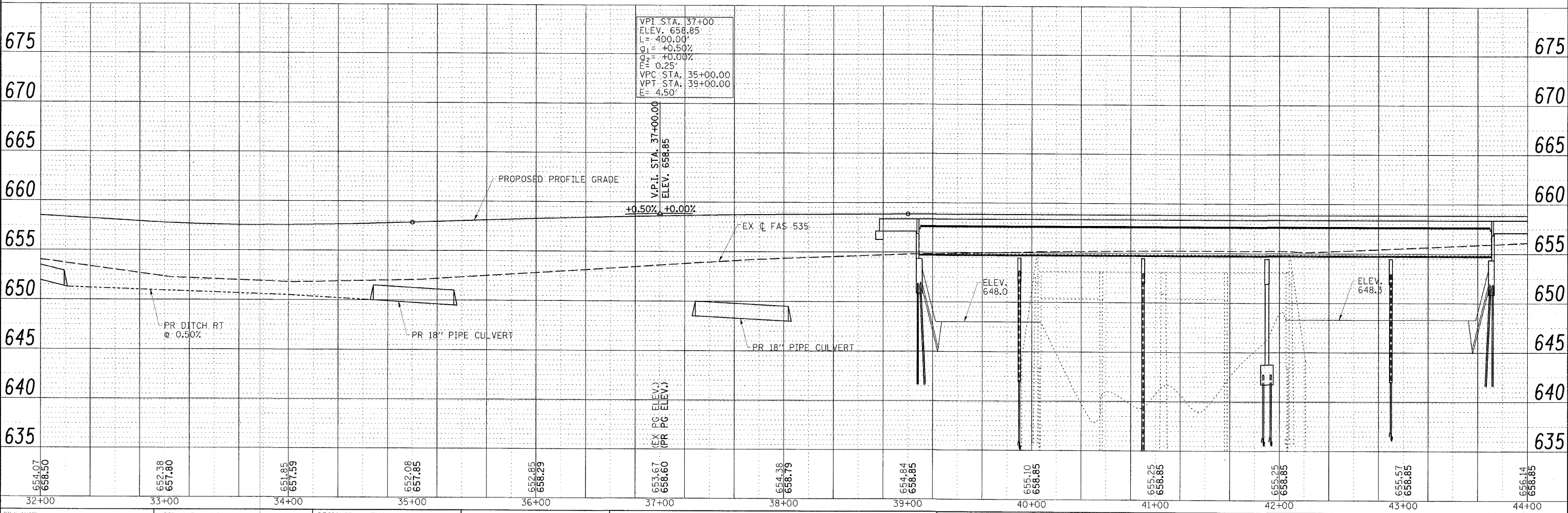
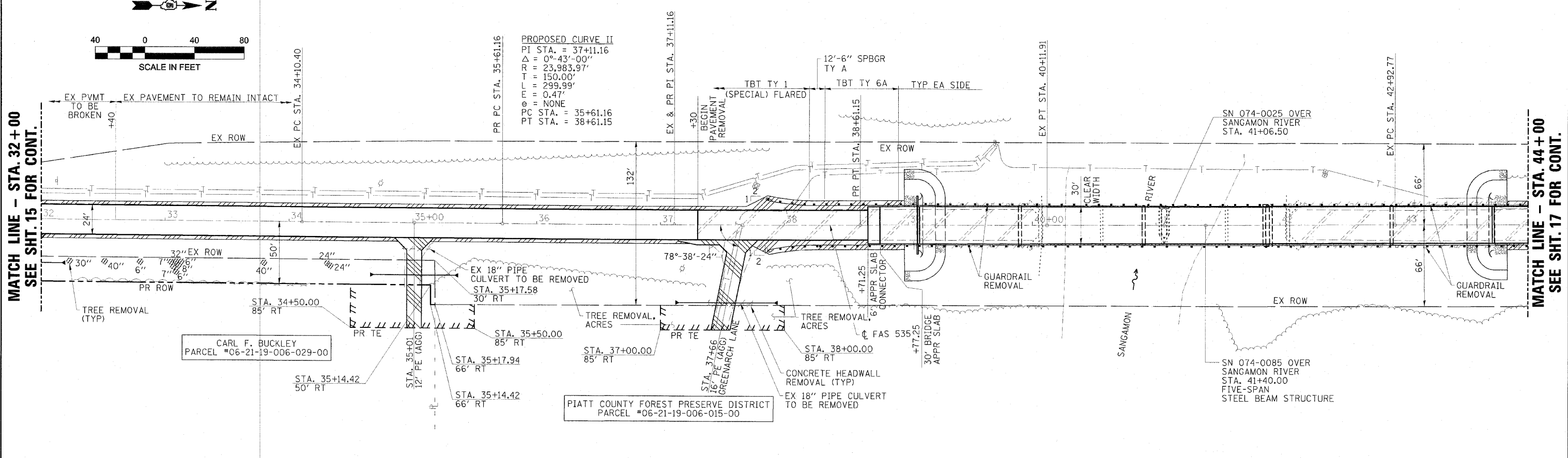


PLAN	SUBMITTED	DATE
NOTE BOOK	PLOTTED	BY
NO.	GRADES CHECKED	NO.
	STRUCTURE NOTATIONS CHECKED	

PROFILE	SUBMITTED	DATE
NOTE BOOK	PLOTTED	BY
NO.	GRADES CHECKED	NO.
	STRUCTURE NOTATIONS CHECKED	

**MATCH LINE - STA. 32+00**  
SEE SHT. 15 FOR CONT.

**MATCH LINE - STA. 44+00**  
SEE SHT. 17 FOR CONT.



FILE NAME = 24401F02.dgn	USER NAME = HAS	DESIGNED - ELH	REVISIONS	STATE OF ILLINOIS DEPARTMENT OF TRANSPORTATION		FAS 535 (SHADY REST ROAD) PLAN & PROFILE		F.A.S. RTE. 535	SECTION 08-00115-01-RS	COUNTY PIATT	TOTAL SHEETS 62	SHEET NO. 16
SCALE: (HORIZ) 1"=40' (VERT) 1"=5'	PLOT DATE = 5/26/2010 7:44:40 AM	CHECKED - ELH	DATE = 05/12/10	SCALE: 1"=40'		SHEET NO. 2 OF 3 SHEETS STA. 32+00 TO STA. 44+00		CONTRACT NO. 91436		ILLINOIS FED. AID PROJECT		