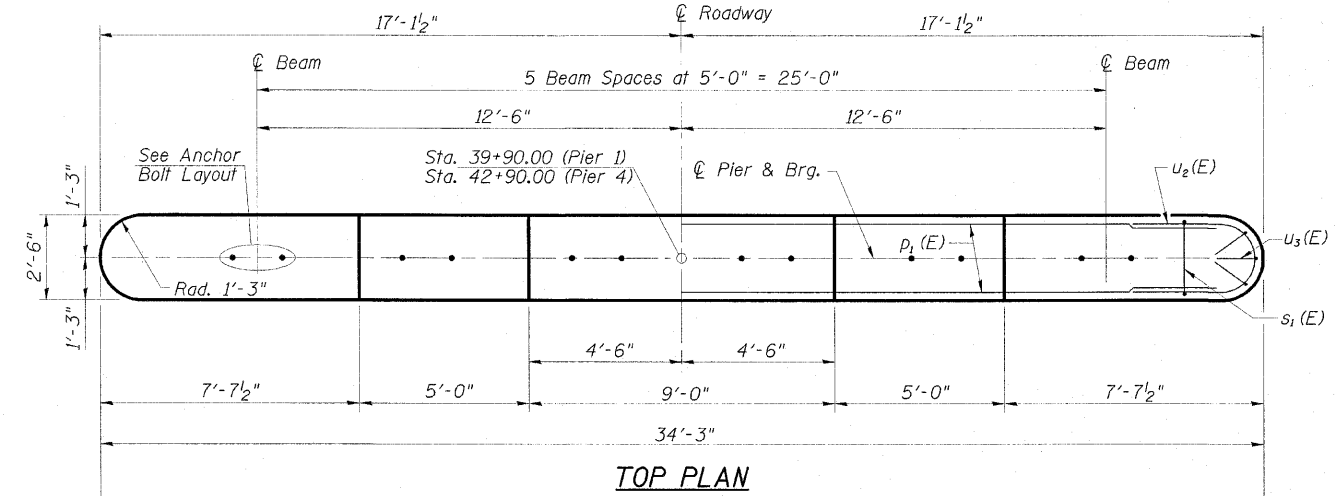
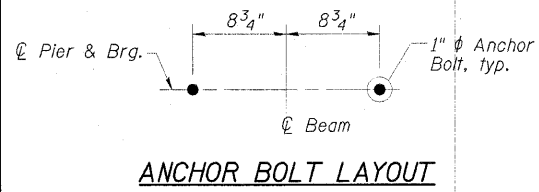


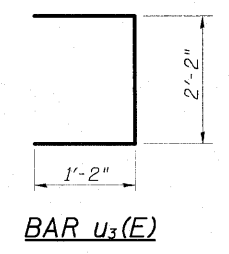
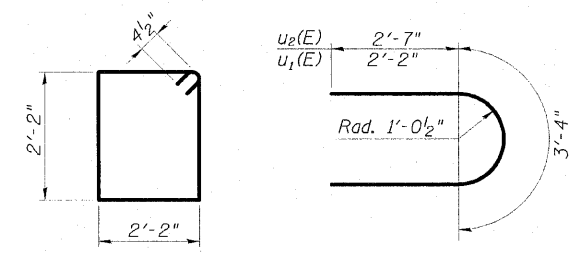
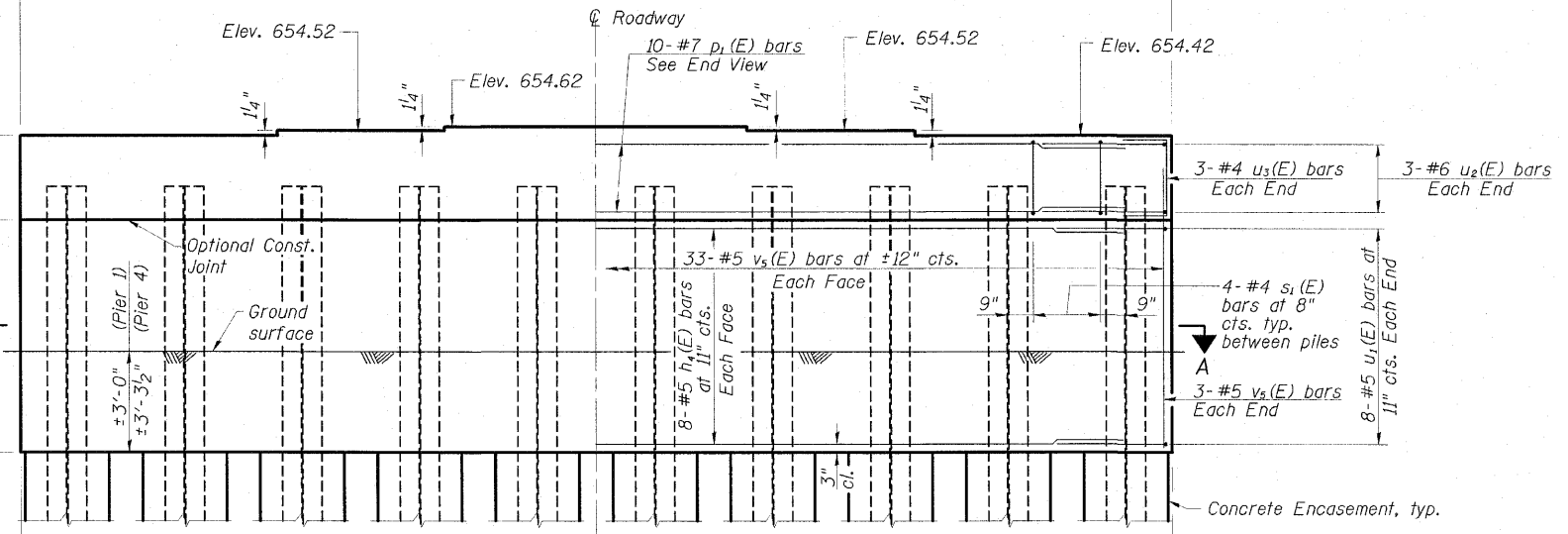
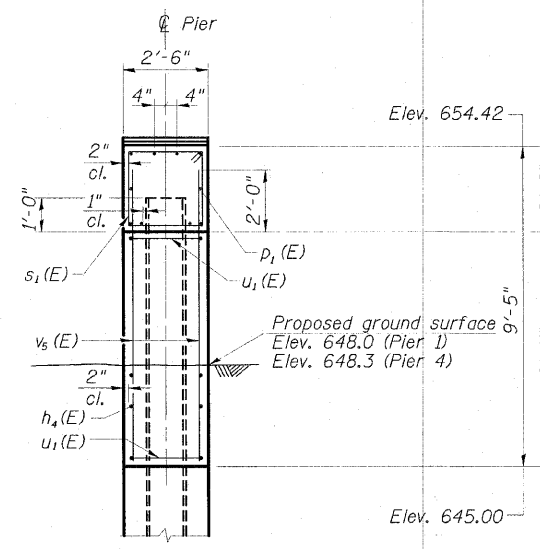
STATE OF ILLINOIS
DEPARTMENT OF TRANSPORTATION

Notes:
Space reinforcement in cap to miss anchor bolts.
Pour steps monolithically with cap.
For details of piles and Concrete Encasement, see sheet 21 of 25.
If a portion of the pier wall or concrete encasement is under water, reinforcement may be placed underwater into forms. Concrete shall be tremied according to Article 503.08 of the Standard Specifications to an elevation of 1'-0" above the water line at the time of construction.

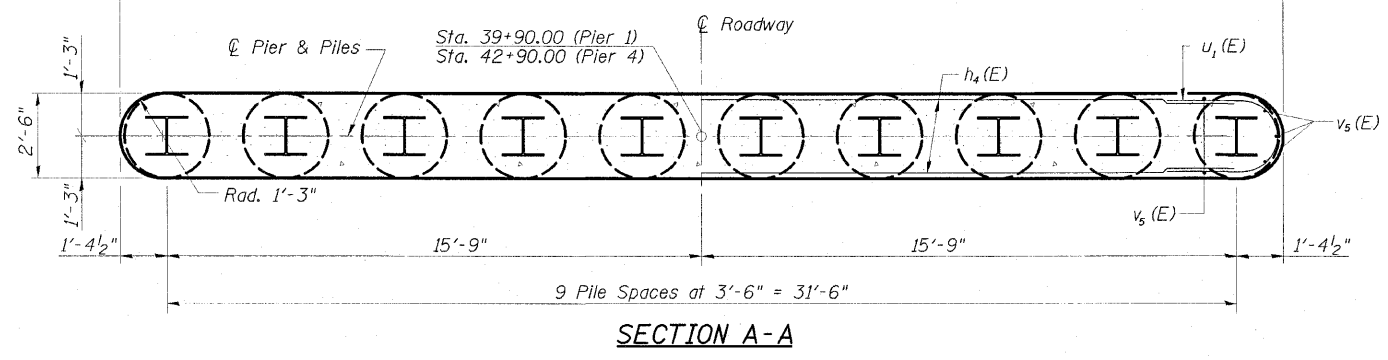


TWO PIERS
BILL OF MATERIAL

Bar	No.	Size	Length	Shape
$h_4(E)$	32	#5	31'-9"	—
$p_1(E)$	20	#7	31'-9"	—
$s_1(E)$	72	#4	9'-5"	□
$u_1(E)$	32	#5	7'-8"	U
$u_2(E)$	12	#6	8'-6"	U
$u_3(E)$	12	#4	4'-6"	U
$v_5(E)$	144	#5	8'-8"	—
Structure Excavation			Cu. Yd.	57
Concrete Structures			Cu. Yd.	59.3
Concrete Encasement			Cu. Yd.	10.9
Reinforcement Bars, Epoxy Coated			Pound	4,560
Furnishing Steel Piles HP14x73			Foot	990
Driving Piles			Foot	990
Test Pile Steel HP14x73			Each	2



PILE DATA
Type: HP14x73
Nominal Required Bearing: 330 kips
Allowable Resistance Available: 180 kips
Estimated Pile Length: 55'
No. of Production Piles: 18 (9 each pier)
No. of Test Piles: 2 (1 each pier)



ESCA
CONSULTANTS, INC.

DESIGNED BY:	MTD	11/09
DRAWN BY:	DWH	11/09
CHECKED BY:	MTD	11/09
APPROVED BY:	RDP	05/10

PIERS 1 AND 4
STRUCTURE NO. 074-0085

SHEET NO. 18 25 SHEETS	F.A.S. RTE.	SECTION	COUNTY	TOTAL SHEETS	SHEET NO.
	535	08-00255-00-BR	PIATT	62	42
CONTRACT NO. 91436					
FED. ROAD DIST. NO.		ILLINOIS FED. AID PROJECT			