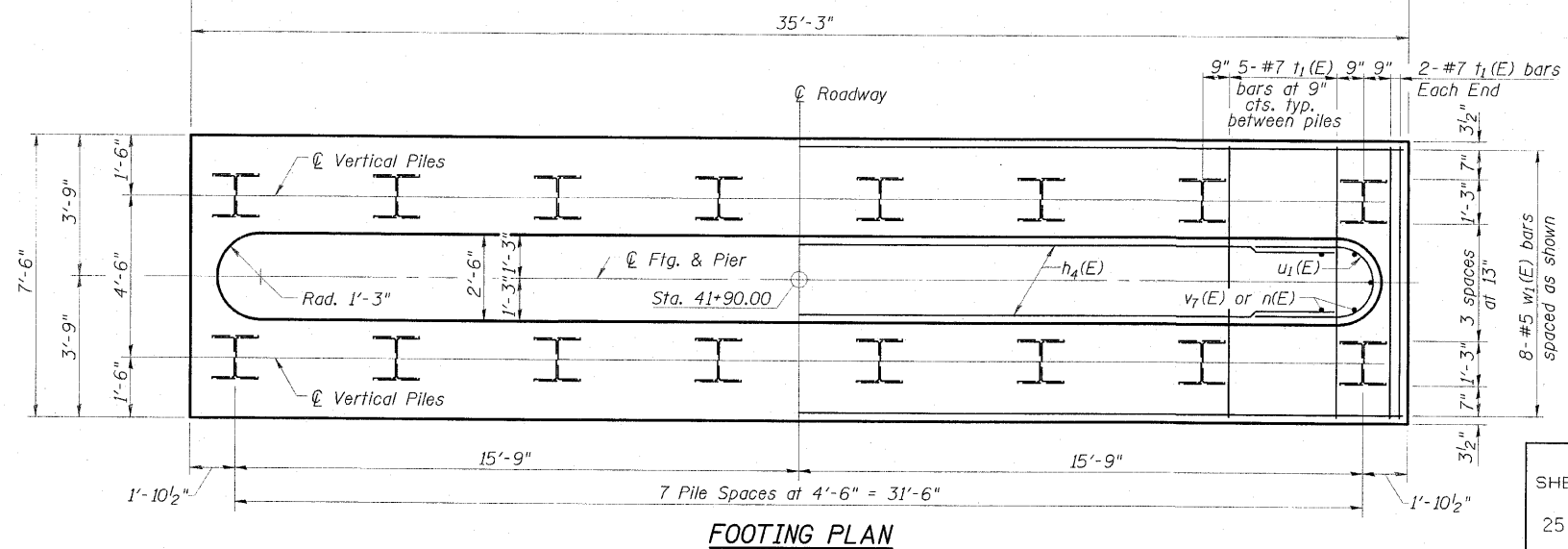
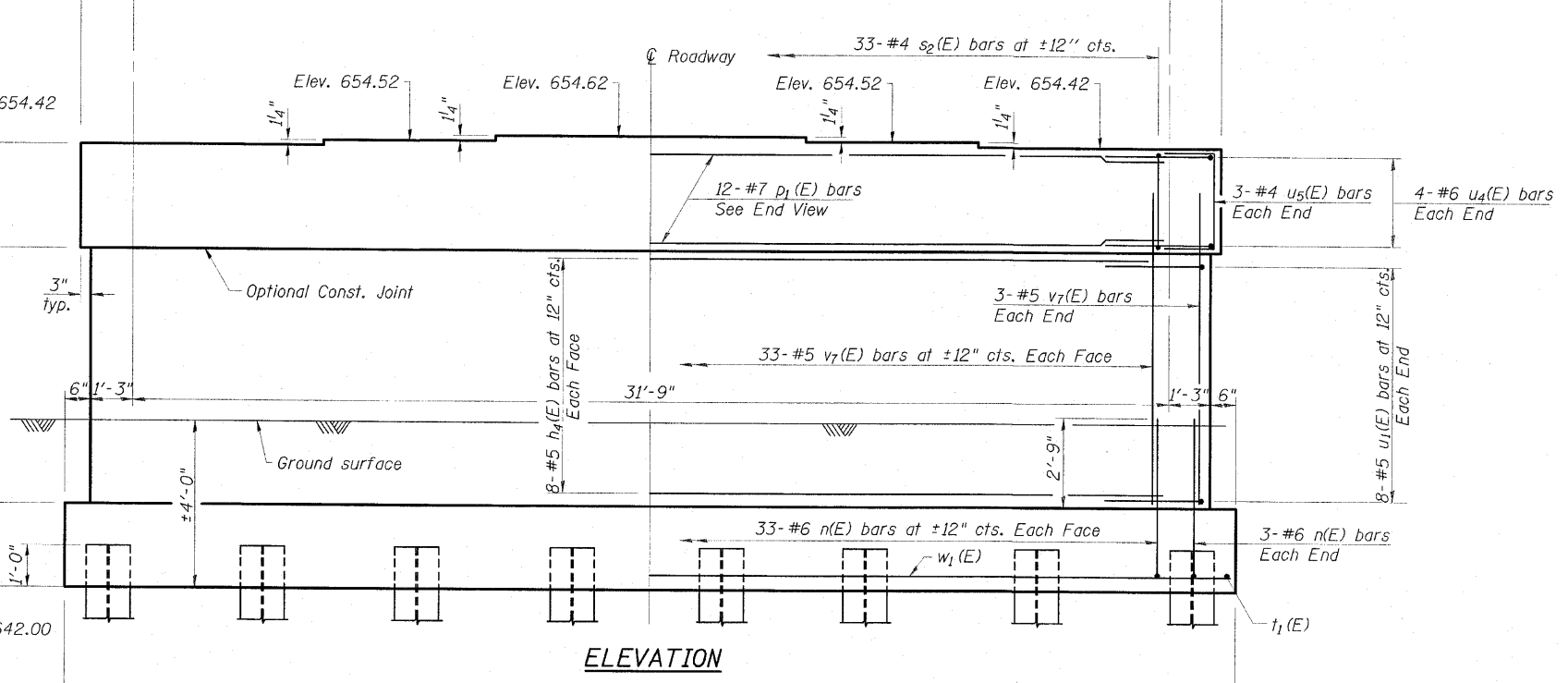
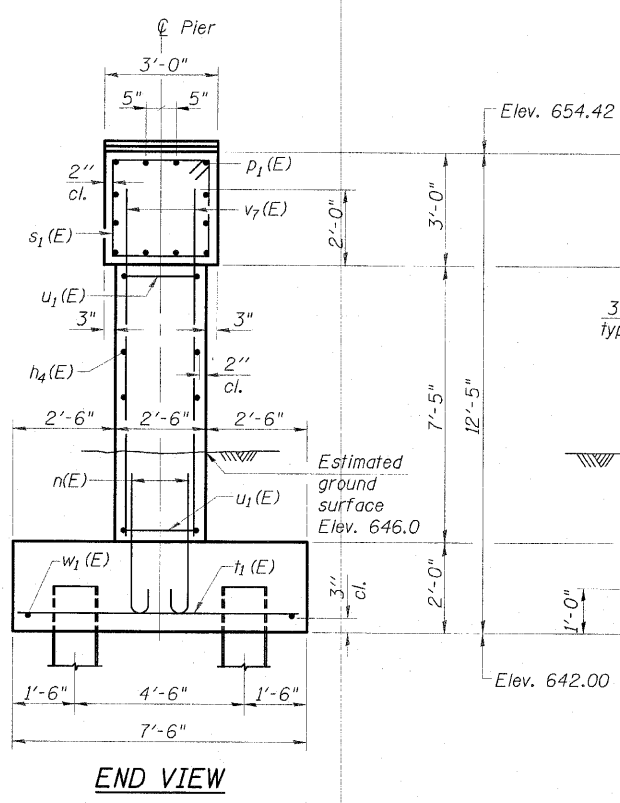
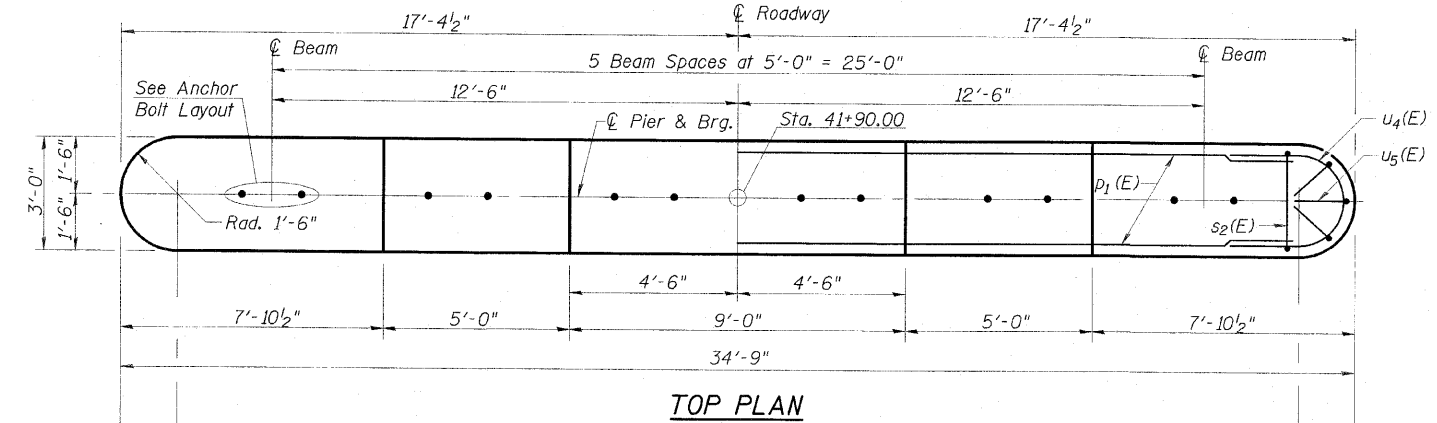
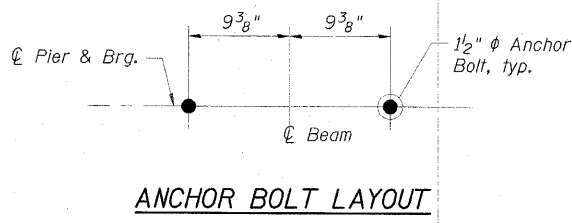


STATE OF ILLINOIS
DEPARTMENT OF TRANSPORTATION

Notes:
Space reinforcement in cap to miss anchor bolts.
Pour steps monolithically with cap.
For details of piles, see sheet 21 of 25.

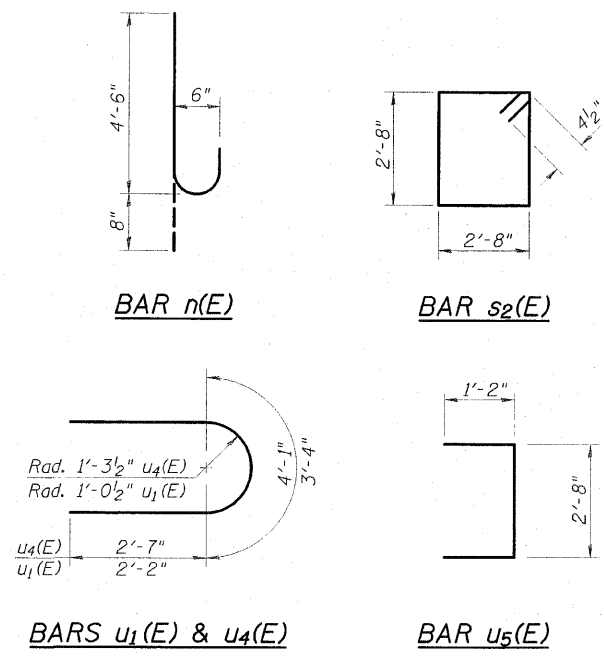
PIER 3
BILL OF MATERIAL

Bar	No.	Size	Length	Shape
$h_4(E)$	16	#5	31'-9"	—
$n(E)$	72	#6	5'-2"	⌋
$p_1(E)$	12	#7	31'-9"	—
$s_2(E)$	33	#4	11'-5"	⌋
$t_1(E)$	39	#7	7'-0"	—
$u_1(E)$	16	#5	7'-8"	⌋
$u_4(E)$	8	#6	9'-3"	⌋
$u_5(E)$	6	#4	5'-0"	⌋
$v_7(E)$	72	#5	9'-3"	—
$w_1(E)$	8	#5	34'-9"	—
Structure Excavation		Cu. Yd.	70	
Concrete Structures		Cu. Yd.	54.4	
Reinforcement Bars, Epoxy Coated		Pound	3,920	
Furnishing Steel Piles HP14x73		Foot	825	
Driving Piles Test Pile Steel HP14x73		Each	1	



PILE DATA
Type: HP14x73
Nominal Required Bearing: 330 kips
Factored Resistance Available: 180 kips
Est. Length: 55'
No. Production Piles: 15
No. Test Piles: 1

ESCA
CONSULTANTS, INC.
DESIGNED BY: MTD 11/09
DRAWN BY: DWH 11/09
CHECKED BY: MTD 11/09
APPROVED BY: RDP 05/10



PIER 3
STRUCTURE NO. 074-0085

SHEET NO. 20 25 SHEETS	F.A.S. RTE.	SECTION	COUNTY	TOTAL SHEETS	SHEET NO.
	535	08-00255-00-BR	PIATT	62	44
CONTRACT NO. 91436					
FED. ROAD DIST. NO. ILLINOIS FED. AID PROJECT					