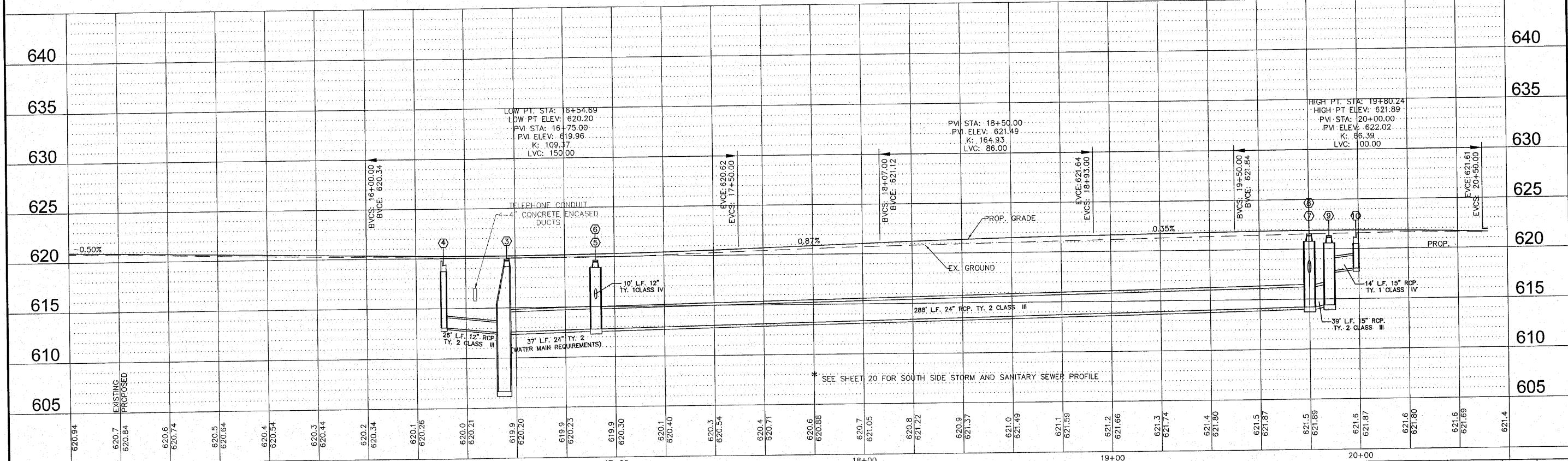


IBM "B"  
CHISELED X N.W. CORNER  
N. ELM ST AND W. MAIN ST.  
AT STA. 19+95 ± ELEV. 621.39



FILE NAME = 01819-301	USER NAME = Horgan, Chris	DESIGNED - CSH	REVISED - 4/5/2010	<b>STATE OF ILLINOIS</b> <b>DEPARTMENT OF TRANSPORTATION</b>	<b>PLAN AND PROFILE</b>	F.A.U. R.T.E. 8136	SECTION 09-00036-02-PV	COUNTY MACOUPIN	TOTAL SHEETS 29	SHEET NO. 12		
PLOT SCALE = 1:1	CHECKED - DLK	REVISED -	REVISED -			SCALE: 1:20	SHEET NO. 12 OF 29 SHEETS	STA. 15+00	TO STA. 20+40	CONTRACT NO. 93521		
PLOT DATE = 4/8/2010	DATE - 11/25/09	REVISED -	REVISED -			FED. ROAD DIST. NO. 6 ILLINOIS I.F.D. AND PROJECT						