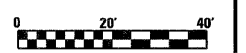
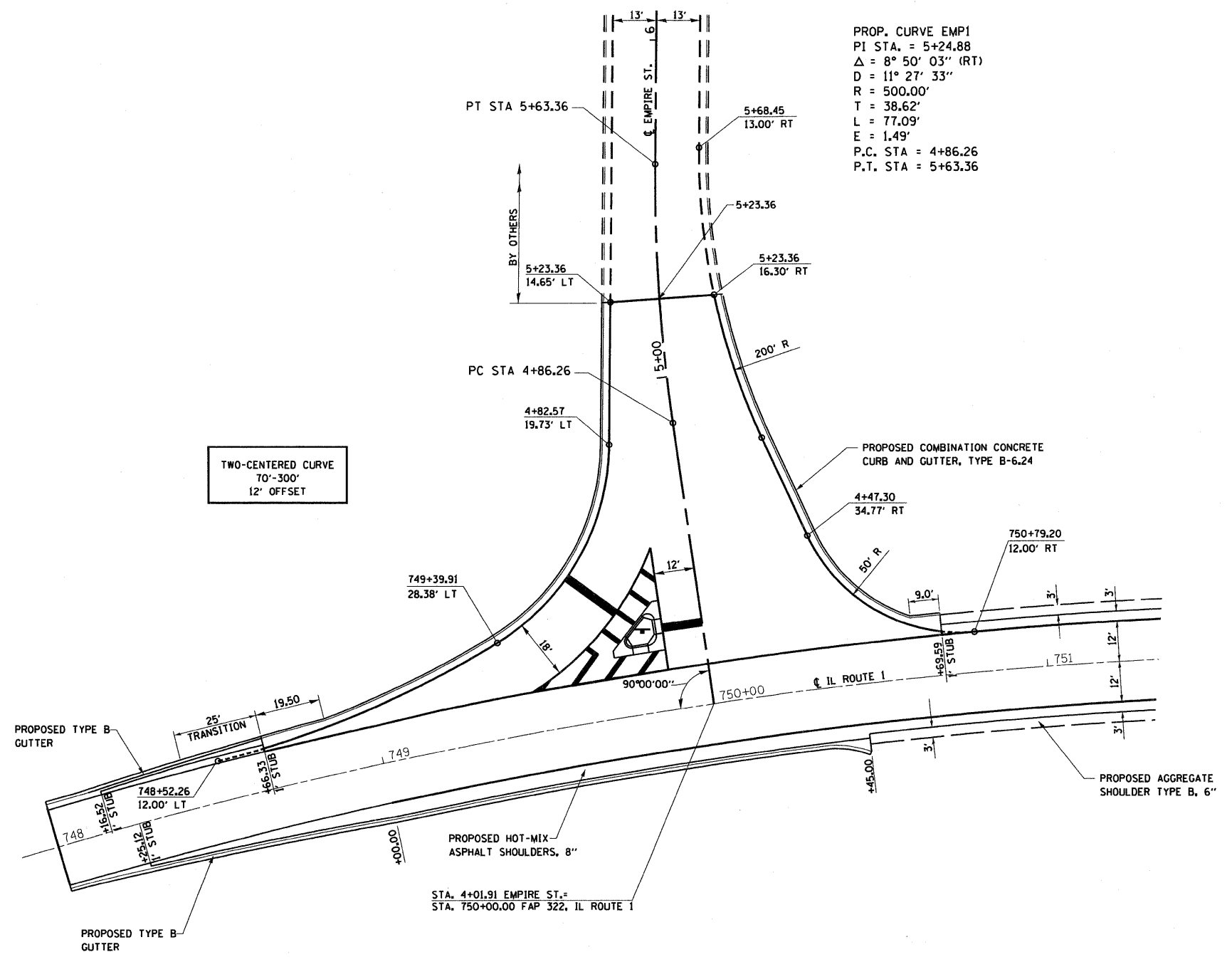
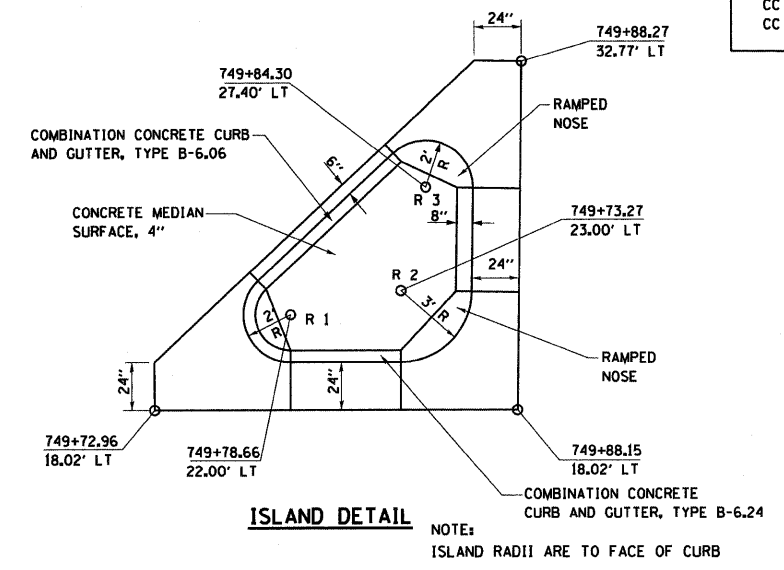




GROUND COORDINATES FOR ISLAND RADII

DESCRIPTION	COORDINATE	
	NORTH	EAST
CC R 1	1139042.75	631929.45
CC R 2	1139047.21	631931.16
CC R 3	1139047.57	631935.67



FILE NAME =	USER NAME = paul	DESIGNED - JLS	REVISED -	<b>STATE OF ILLINOIS DEPARTMENT OF TRANSPORTATION</b>	<b>INTERSECTION DETAILS, FAP 322 (ILLINOIS ROUTE 1)</b>	F.A.P. RTE. = 332	SECTION = 103B-1	COUNTY = WABASH	TOTAL SHEETS = 90	SHEET NO. = 29	
PLOT SCALE = 40.00000 / IN.						SCALE: 1"=20'    SHEET NO. 1 OF 3 SHEETS    STA.            TO STA.					
PLOT DATE = 4/29/2009						CONTRACT NO. 94754					
DATE = 6-20-08						FED. ROAD DIST. NO.    ILLINOIS FED. AID PROJECT					