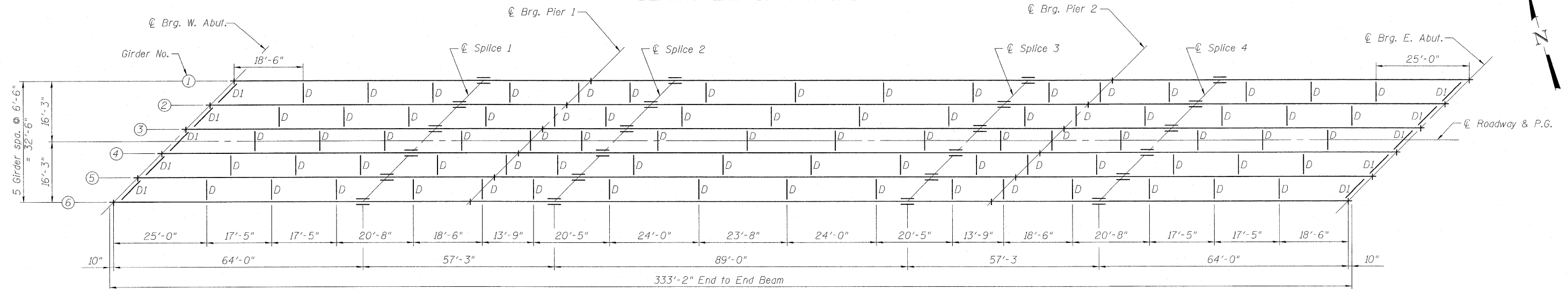


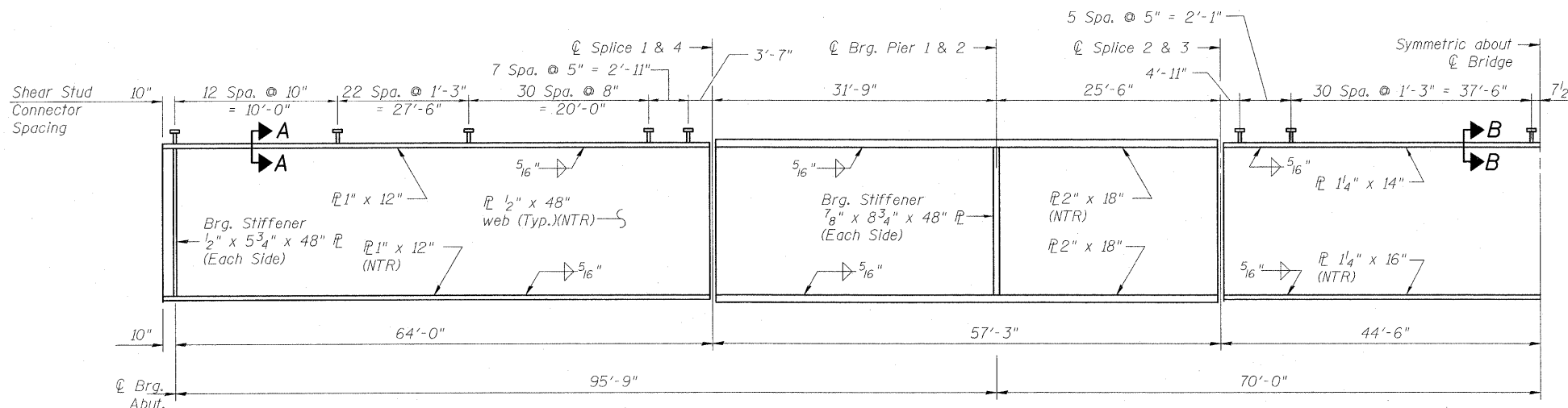
STATE OF ILLINOIS  
DEPARTMENT OF TRANSPORTATION



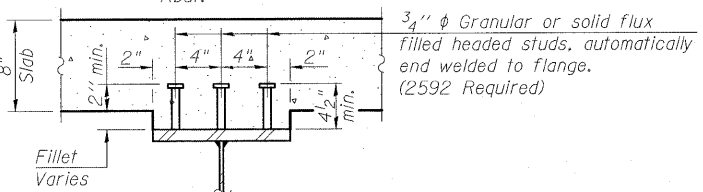
FRAMING PLAN

Notes:

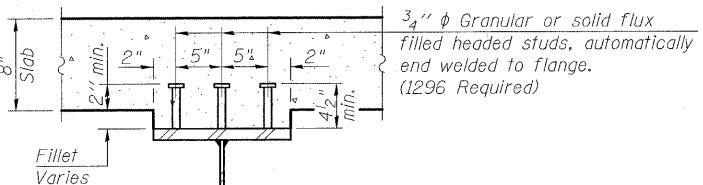
Two hardened washers required for each set of oversized holes.  
All diaphragms between beams or girders shall be installed with erection pins and bolts in accordance with the erection plan approved by the Engineer. Individual cross frames or diaphragms at supports may be temporarily disconnected to install bearing anchor rods.  
See Sheet 13 of 27 for Bearing bolt hole placement.  
Load carrying components for Notch Toughness, Zone 2, shall conform to the Supplemental Requirements for Notch Toughness, Zone 2.  
See sheet 12 of 27 for bearing Stiffeners.



GIRDER ELEVATION



SECTION A-A

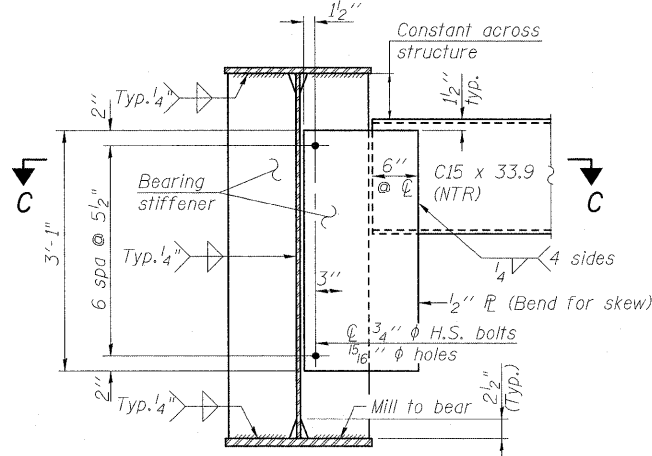


SECTION B-B

\* TOP OF WEB ELEVATIONS

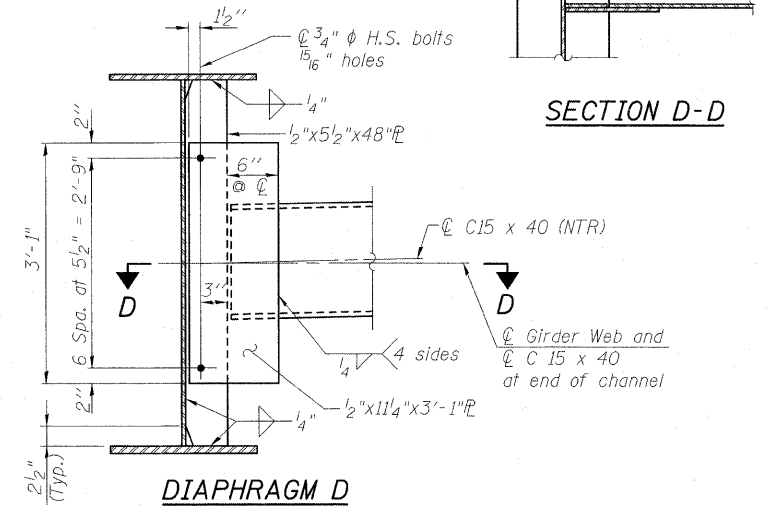
Location	℄ Brg. W. Abut.	℄ Splice 1	℄ Pier 1	℄ Splice 2	℄ Splice 3	℄ Pier 2	℄ Splice 4	℄ Brg. E. Abut.
Girder 1	458.05	457.98	457.81	457.82	457.13	456.80	456.41	455.50
Girder 2	458.14	458.11	457.96	457.97	457.32	456.99	456.63	455.74
Girder 3	458.23	458.21	458.06	458.10	457.19	457.18	456.82	455.96
Girder 4	458.17	458.21	458.06	458.12	457.55	457.25	456.91	456.07
Girder 5	458.06	458.11	457.99	458.04	457.51	457.19	456.89	456.07
Girder 6	457.91	457.98	457.86	457.94	457.44	457.12	456.84	456.01

\* "For Fabrication Only"



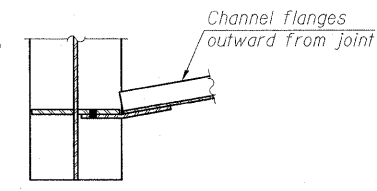
DIAPHRAGM D-1

Note: Two hardened washers required for each set of oversized holes.



SECTION D-D

DIAPHRAGM D



SECTION C-C

STRUCTURAL STEEL  
ILLINOIS ROUTE 1  
OVER NORFOLK SOUTHERN RR  
STA. 757+97.66

DESIGNED	B.B.
CHECKED	C.J.F.
DRAWN	J.G.
CHECKED	C.J.F. & B.B.

SHEET NO. 11 27 SHEETS	F.A.P. RTE.	SECTION	COUNTY	TOTAL SHEETS	SHEET NO.
	332	103B-1	WABASH	90	46
	SN 093-0023		CONTRACT NO. 94754		
FED. ROAD DIST. NO. 7 ILLINOIS FED. AID PROJECT 332					



BERNARDIN  
LOCHMUELLER &  
ASSOCIATES, INC.

3 Oak Drive  
Maryville, IL 62062-5635  
Local-618-288-4665  
Fax 618-288-4666