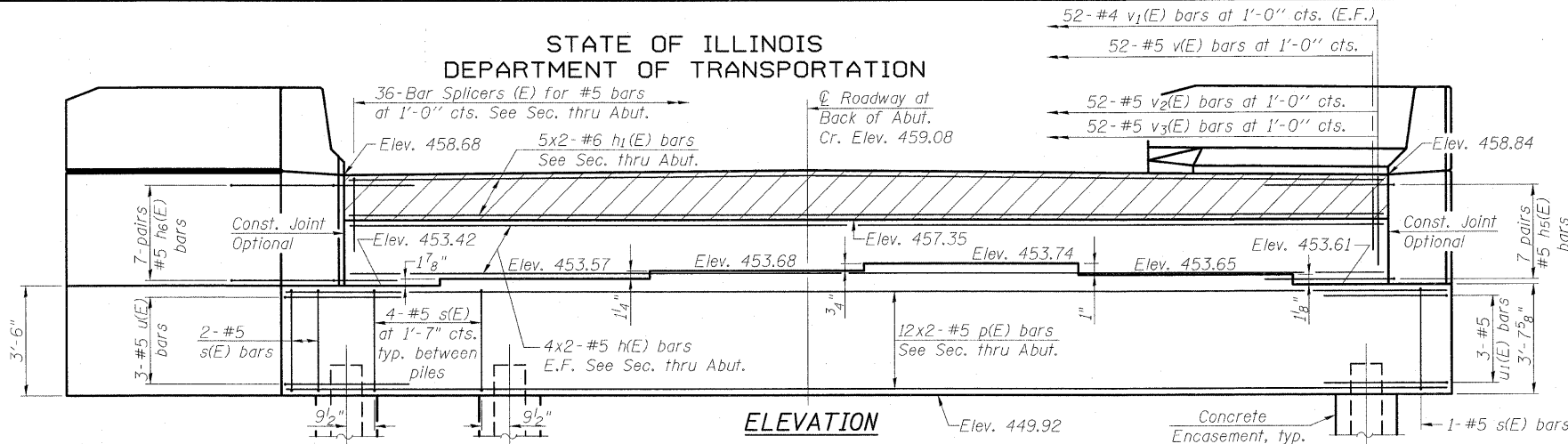
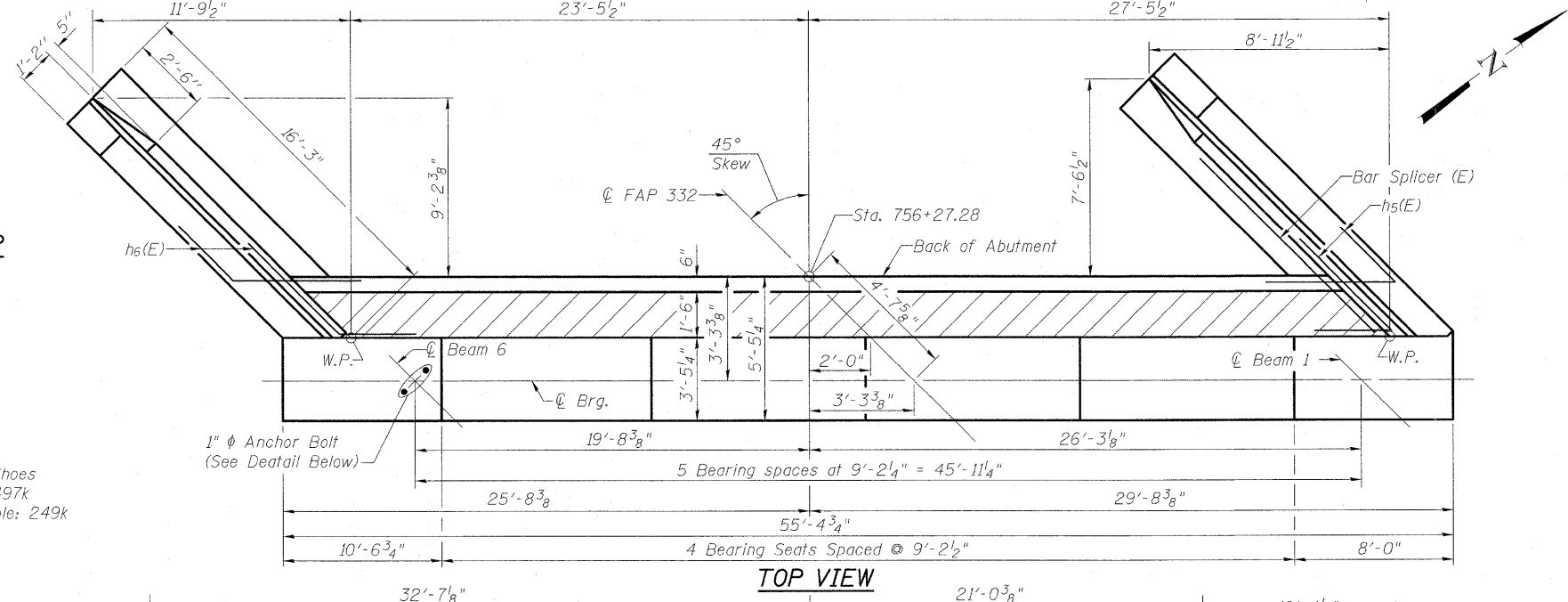


STATE OF ILLINOIS
DEPARTMENT OF TRANSPORTATION



Notes:
Top of Pile Elev. = 451.92
For details of Bar Splicers, see sheet 21 of 27.
For details of piles and Concrete Encasement, see sheet 24 of 27.
For concrete sealer application see sheet 17 of 27.
E.F. indicates Each Face
For Section Thru Abutment and Wingwalls see sheet 16 of 27.



WEST ABUTMENT
BILL OF MATERIAL

Bar	No.	Size	Length	Shape
h(E)	16	#5	26'-2"	—
h1(E)	10	#6	26'-4"	—
h2(E)	24	#4	14'-4"	—
h3(E)	8	#4	15'-11"	—
h4(E)	8	#4	13'-1"	—
h5(E)	14	#5	8'-0"	—
h6(E)	14	#5	8'-0"	—
n(E)	26	#6	12'-2"	—
n1(E)	12	#6	6'-1"	—
p(E)	24	#5	28'-7"	—
p1(E)	6	#7	14'-4"	—
p2(E)	6	#7	15'-11"	—
s(E)	35	#5	17'-5"	—
s1(E)	30	#4	9'-5"	—
u(E)	3	#5	8'-4"	—
u1(E)	3	#5	6'-7"	—
v(E)	52	#5	5'-7"	—
v1(E)	52	#4	3'-0"	—
v2(E)	52	#5	7'-2"	—
v3(E)	52	#5	2'-9"	—
v4(E)	32	#6	7'-9"	—
v5(E)	26	#6	8'-0"	—
v6(E)	6	#6	7'-4"	—
Structure Excavation	Cu. Yd.		124.9	
Concrete Structures	Cu. Yd.		72.3	
Reinforcement Bars, Epoxy Coated	Pound		5690	
Furnishing Steel Piles HP 12x63	Foot		418	
Driving Piles	Foot		418	
Concrete Encasement	Cu. Yd.		3.8	
Pile Shoes	Each		11	
Concrete Sealer	Sq. Ft.		542.0	
Bar Splicers	Each		36	

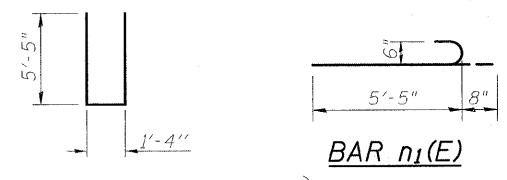
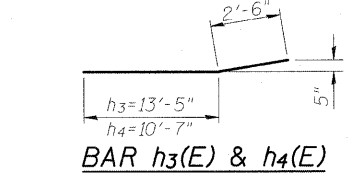
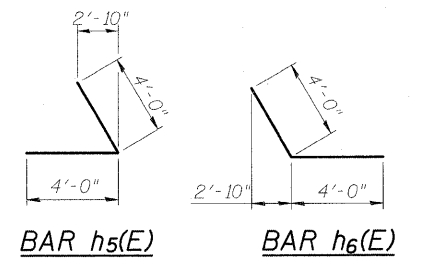
WEST ABUTMENT
ILLINOIS ROUTE 1
OVER NORFOLK SOUTHERN RR
STA. 757+97.66

PLAN-PILE CAP
BERNARDIN
LOCHMUELLER &
ASSOCIATES, INC.

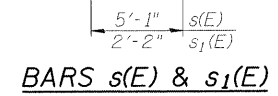
3 Oak Drive
Maryville, IL 62442-5685
Local (618) 288-4665
Fax 618-288-4666

SHEET NO. 14
27 SHEETS

F.A.P. RTE.	SECTION	COUNTY	TOTAL SHEETS	SHEET NO.
332	103B-1	WABASH	90	48
SN 093-0023		CONTRACT NO. 94754		
FED. ROAD DIST. NO. 7 ILLINOIS FED. AID PROJECT 332				

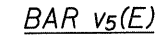
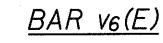
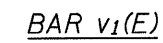
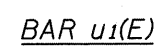
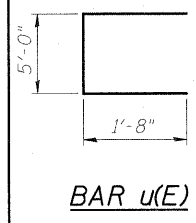


MINIMUM BAR LAP
#5 bar = 1'-8"
#6 bar = 2'-0"

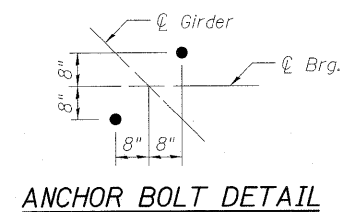


PILE DATA

Type: HP 12x63 with Pile Shoes
Nominal Required Bearing: 497k
Factored Resistance Available: 249k
Est. Length: 38'-0"
No. Production Piles: 11
No. Test Piles: None



DESIGNED	B.B.
CHECKED	C.J.F.
DRAWN	J.G.
CHECKED	C.J.F. & B.B.



ANCHOR BOLT DETAIL