

STATE OF ILLINOIS  
DEPARTMENT OF TRANSPORTATION  
51'-2"

Notes:  
Space reinforcement in cap to miss anchor bolts.  
Pour steps monolithically with cap.  
For details of piles, see sheet 24 of 27.  
All Mechanical Splices shall be staggered.  
Stagger Mechanical Splice locations of u<sub>5</sub>(E) bars in crashwall by alternating the placement of the bars long leg on each face.  
Cut bottom footing bars to fit between piles.  
Clear cover noted to mechanical splice, where applicable.

**PILE DATA**

Type: HP 14x73  
Nominal Required Bearing: 578k  
Factored Resistance Available: 289k  
Est. Length: 19'-0"  
No. Production Piles: 30  
No. Test Piles: None

For Sec. C-C See Sheet 19 of 27.

7 Pairs of #5 s<sub>3</sub>(E) bars  
@ ±8" cts. at each end.  
See sec A-A.

Low Elev. 453.28

Elev.=453.28

Elev.=453.43

Elev.=453.53

Elev.=453.46

Elev.=453.33

Elev.=449.45

Elev.=436.68

Elev. 424.76

Note:  
Top of Pile Elev. 426.76

\* Splicing of vertical reinforcement not allowed in this area.

HP 14x73 (Typ.)

2'-6"

15'-0"

5'-0"

2'-6"

2'-6"

2'-6"

2'-6"

2'-6"

2'-6"

2'-6"

2'-6"

2'-6"

2'-6"

2'-6"

2'-6"

2'-6"

2'-6"

2'-6"

2'-6"

2'-6"

2'-6"

2'-6"

2'-6"

2'-6"

2'-6"

2'-6"

2'-6"

2'-6"

2'-6"

2'-6"

2'-6"

2'-6"

2'-6"

2'-6"

2'-6"

2'-6"

2'-6"

2'-6"

2'-6"

2'-6"

2'-6"

2'-6"

2'-6"

2'-6"

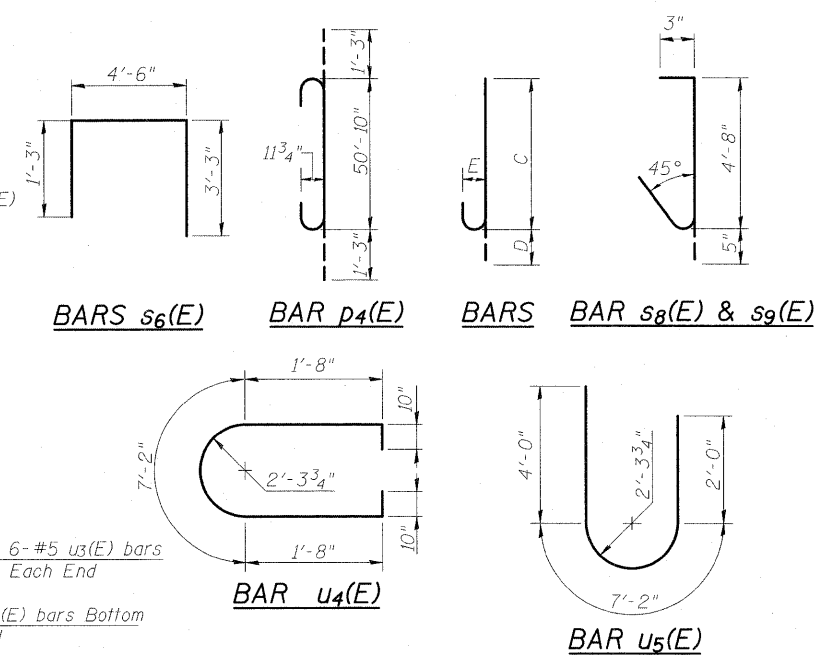
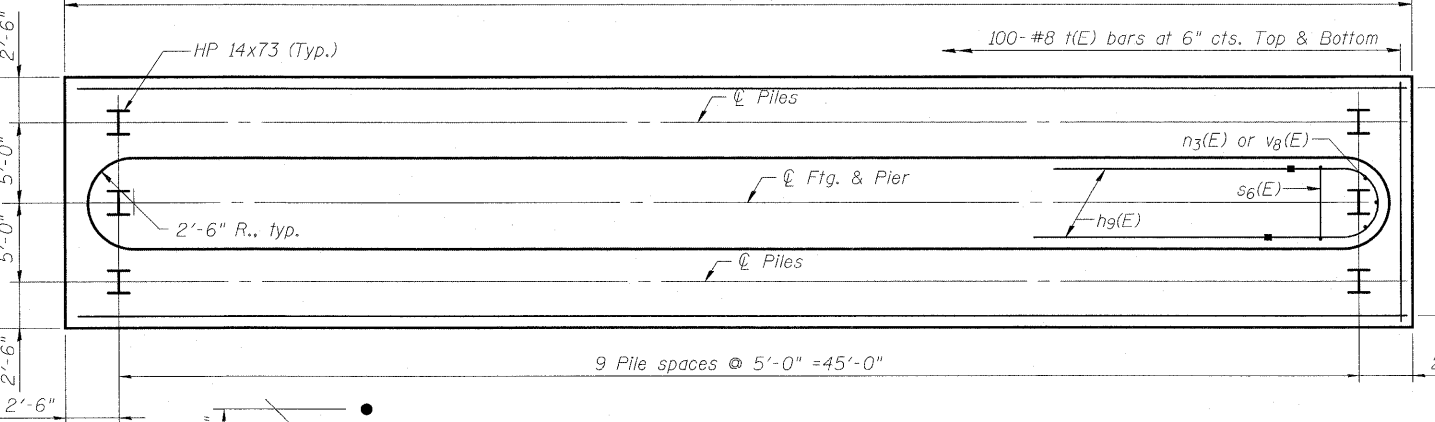
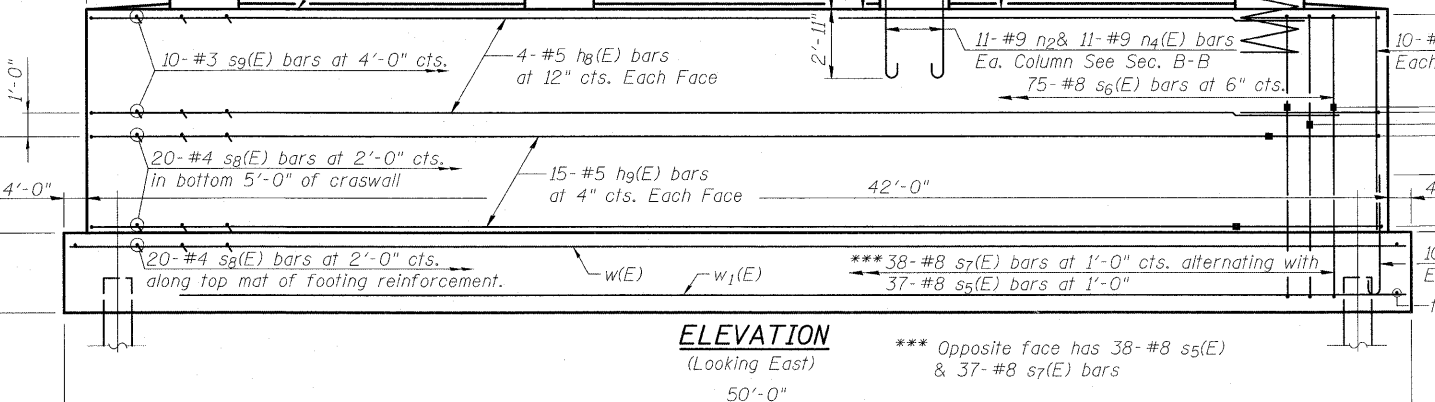
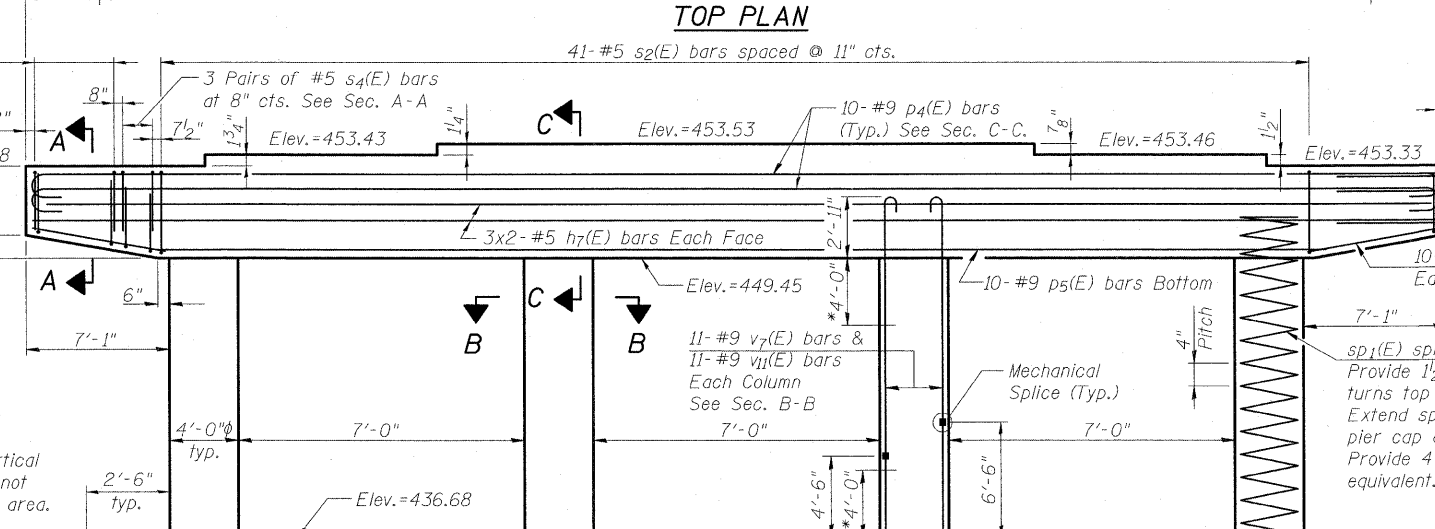
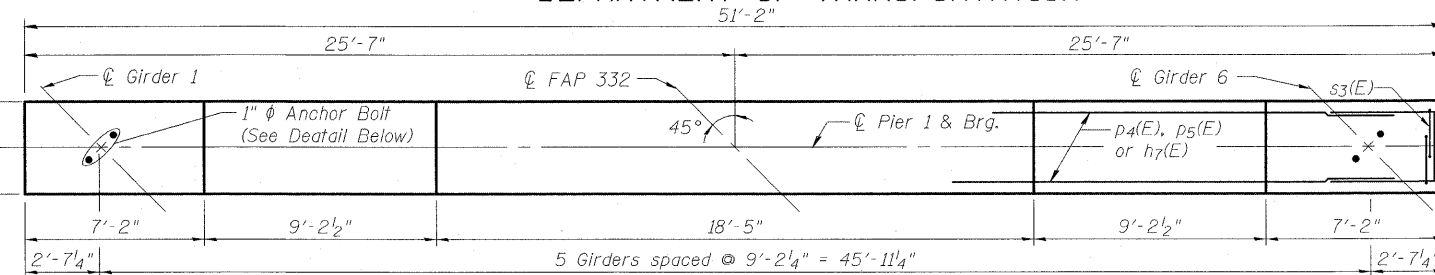
2'-6"

2'-6"

2'-6"

2'-6"

2'-6"



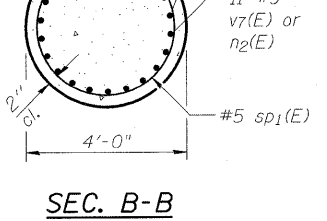
**PIER 1 BILL OF MATERIAL**

Bar	No.	Size	Length	Shape
h7(E)	12	#5	26'-3"	U
h8(E)	8	#5	37'-0"	U
h9(E)	30	#5	31'-0"	U
n2(E)	44	#9	8'-11"	U
n3(E)	20	#8	7'-1"	U
n4(E)	44	#9	10'-11"	U
p4(E)	20	#9	53'-4"	U
p5(E)	10	#9	37'-8"	U
p6(E)	20	#9	6'-6"	U
s2(E)	41	#5	16'-4"	U
s3(E)	56	#5	8'-0"	U
s4(E)	24	#5	9'-2"	U
s5(E)	75	#8	9'-2"	U
s6(E)	75	#8	9'-0"	U
s7(E)	75	#8	11'-2"	U
s8(E)	320	#4	5'-4"	U
s9(E)	40	#3	5'-4"	U
sp1(E)	4	#5	16'-10"	W
t(E)	200	#8	14'-6"	U
u3(E)	12	#5	7'-4"	U
u4(E)	8	#5	12'-2"	U
u5(E)	30	#5	13'-2"	U
v7(E)	44	#9	12'-9"	U
v8(E)	20	#8	8'-9"	U
v11(E)	44	#9	10'-9"	U
w(E)	32	#5	25'-8"	U
w1(E)	48	#5	17'-8"	U
Structure Excavation		Cu. Yd.	238.0	
Concrete Structures		Cu. Yd.	206.5	
Reinforcement Bars, Epoxy Coated		Pound	35,460	
Furnishing Steel Piles HP 14x73		Foot	570	
Driving Piles		Foot	570	
Pile Shoes		Each	30	
Mechanical Splicers		Each	298	

\*\* Length is height of spiral.

**PIER 1  
ILLINOIS ROUTE 1  
OVER NORFOLK SOUTHERN RR  
STA. 757+97.66**

DESIGNED	B.B.
CHECKED	C.J.F.
DRAWN	J.G.
CHECKED	C.J.F. & B.B.



SHEET NO. 18 27 SHEETS	F.A.P. RTE. 332	SECTION 103B-1	COUNTY WABASH	TOTAL SHEETS 90	SHEET NO. 53
	SN 093-0023			CONTRACT NO. 94754	
FED. ROAD DIST. NO. 7 ILLINOIS FED. AID PROJECT 332					

**BERNARDIN  
LOCHMUELLER &  
ASSOCIATES, INC.**

3 Oak Drive  
Maryville, IL 62962-5635  
Local-618-288-4665  
Fax 618-288-4666

11/5/43 AM 7/15/2010 \N:\p03023\94754.dgn