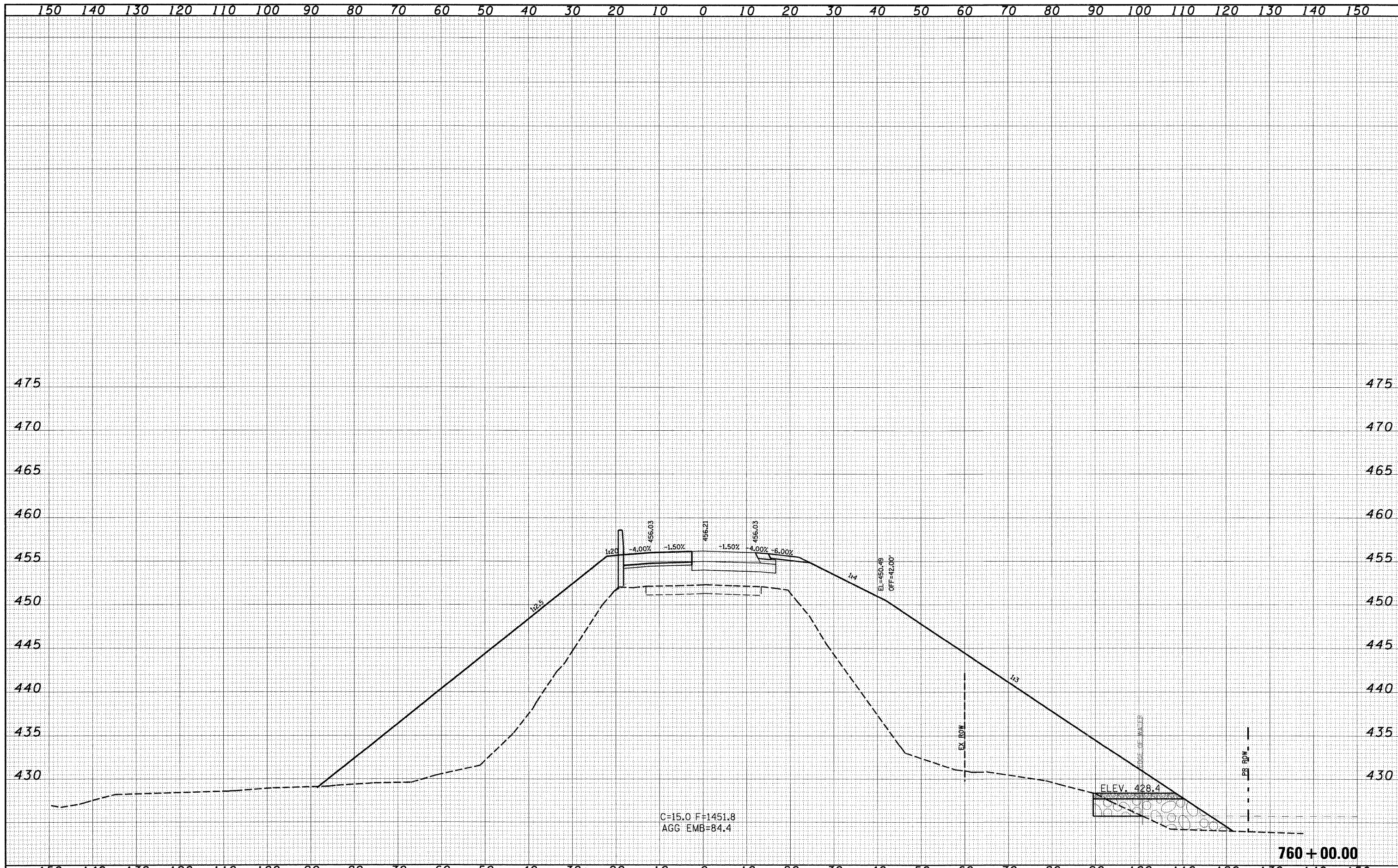


DATE	
BY	
SURVEYED	
TEMPLATE	
AREAS CHECKED	
NO.	

DATE	
BY	
SURVEYED	
TEMPLATE	
AREAS CHECKED	
NO.	



C=15.0 F=1451.8
AGG EMB=84.4

FILE NAME =	USER NAME = paul	DESIGNED - JLS	REVISED -	STATE OF ILLINOIS DEPARTMENT OF TRANSPORTATION	CROSS SECTIONS - FAP ROUTE 332 (ILLINOIS ROUTE 1)			F.A.P. RTE. 332	SECTION 103B-1	COUNTY WABASH	TOTAL SHEETS 90	SHEET NO. 78
S:\Projects\407-0008 08D Dist 7 Various\40 IL Iover NS RR\dgn\ssant_troute1.dgn	PLOT SCALE = 20.0000' / IN.	DRAWN - MAB	REVISED -		SCALE: 1"=10'	SHEET NO. 16 OF 26 SHEETS	STA. 760+00.00 TO STA. 760+00.00	FED. ROAD DIST. NO.	ILLINOIS FED. AID PROJECT	CONTRACT NO. 94754		
	PLOT DATE = 4/28/2009	CHECKED - BRM	REVISED -									
		DATE - 6-20-08	REVISED -									