

# STATE OF ILLINOIS DEPARTMENT OF TRANSPORTATION

## PLANS FOR PROPOSED HIGHWAY BRIDGE PROGRAM

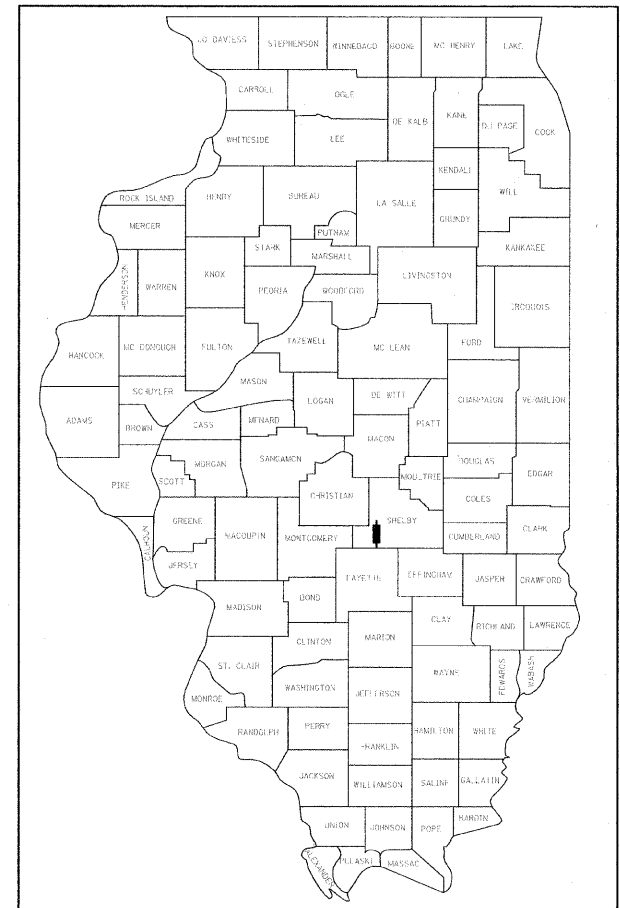
**T.R. 140 OVER MITCHELL CREEK**

**SECTION 09-05118-00-BR**

**PROJECT BROS-173(169)**

**SHELBY COUNTY**

**C-97-122-10**



LOCATION OF SECTION INDICATED THUS: - - -

- INDEX OF SHEETS**
- 1 - TITLE SHEET
  - 2 - SUMMARY OF QUANTITIES, DETAILS, & TYPICAL SECTIONS
  - 3 - PLAN & PROFILE
  - 4 & 5 - GENERAL PLAN & ELEVATION
  - 6 - 9 - SUPERSTRUCTURE
  - 10 - RAILING
  - 11 - ABUTMENTS
  - 12 - PIERS
  - 13 - STEEL H PILE DETAILS
  - 14 - 21 - CROSS SECTIONS

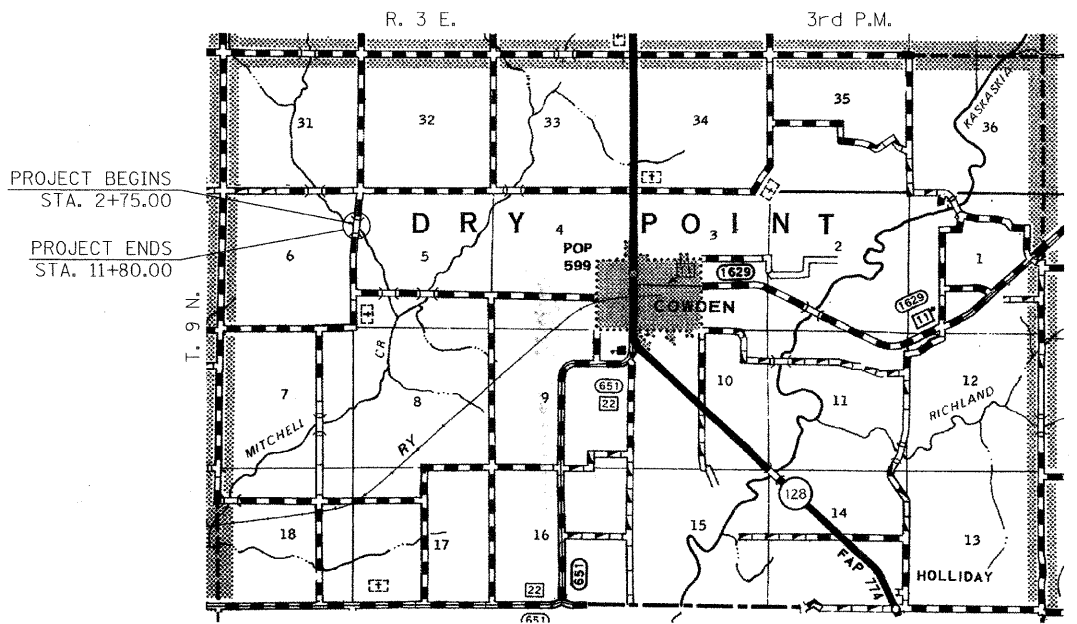
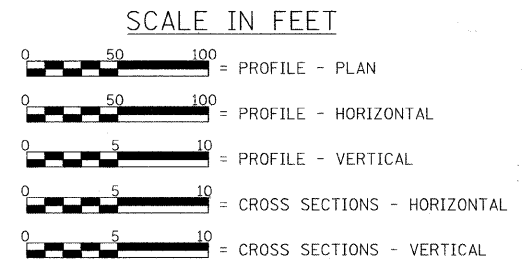
**STANDARDS**

- STANDARD 000001-05
- STANDARD 280001-05
- STANDARD 515001-03
- STANDARD 635006-03
- STANDARD 701901-01
- STANDARD BLR 21-8

**UTILITIES**

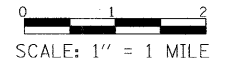
SHELBY ELECTRIC COOPERATIVE  
NORTH ROUTE 128  
SHELBYVILLE, ILLINOIS 62562

CONSOLIDATED COMMUNICATIONS INC.  
121 SOUTH 17TH STREET  
MATTOON, ILLINOIS 61938-3915  
217-234-9971



**LOCATION PLAN**

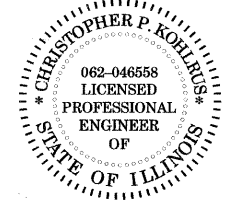
LENGTH OF SECTION - 905.00 FEET = 0.171 MILES



**EXISTING STRUCTURE:** SINGLE SPAN TIMBER DECK ON STEEL STRINGERS SUPPORTED BY CLOSED TIMBER ABUTMENTS WITH TIMBER WINGWALLS. ±45'-0" BK.-BK. ABUTMENTS, ±18'-11" OUT.-OUT. DECK. STEEL RAILING. ±0° SKEW.  
EXISTING STRUCTURE NO: 087-3331

**PROPOSED STRUCTURE:** THREE SPAN PRECAST PRESTRESSED CONCRETE DECK BEAM (17") BRIDGE ON OPEN CONCRETE ABUTMENTS AND SOLID CONCRETE PIERS. 24'-0" OUT. TO OUT. DECK, 90'-0" BK. TO BK. ABUTMENTS. STEEL RAILING TYPE S-1. 20° SKEW LT. FWD.  
PROPOSED STRUCTURE NO. 087-3571

LAND SECTION - 6  
LAND QUARTER SECTION - N.E.  
FUNCTIONAL CLASSIFICATION: LOCAL ROAD (NON-URBAN)  
A.D.T. - 100 (2009)  
30 M.P.H. DESIGN SPEED



*Christopher P. Kohlberg* 3/30/10  
EXPIRATION: 11/30/2017

APPROVED APR 15, 2010  
*Brent Reynolds*  
TOWNSHIP HIGHWAY COMMISSIONER

APPROVED 04-05, 2010  
*A. An...*  
COUNTY ENGINEER

PASSED 4/8, 2010  
*Maureen Kastl*  
DISTRICT SEVEN ENGINEER OF LOCAL ROADS & STREETS

Releasing For Bid Based on Limited Review 4/8, 2010  
*Roger R. Drischell*  
DEPUTY DIRECTOR OF HIGHWAYS, REGION FOUR ENGINEER

STATE OF ILLINOIS  
DEPARTMENT OF TRANSPORTATION

TOLL FREE  
"JOINT UTILITY LOCATION INFORMATION FOR EXCAVATORS"  
(J.U.L.I.E.) TELEPHONE NUMBER  
1-800-892-0123

CONTRACT NO. 95628

FILE NAME	USER NAME	DESIGNED	REVISED		<b>Allen Henderson &amp; Associates, Inc.</b> Civil and Structural Engineers Springfield, IL 62703 Phone: (217)544-8033 IL Design Firm No. 184-001907	<b>TITLE SHEET</b>	T.R. RTE.	SECTION	COUNTY	TOTAL SHEETS	SHEET NO.
#FILE#	#USER#	DRAWN	REVISED				140	09-05118-00-BR	SHELBY	21	1
		CHECKED	REVISED				STR. NO. 087-3571			CONTRACT NO.	
		DATE	REVISED				SCALE: 1" = 1 MILE SHEET NO. 1 OF 21 SHEETS		STA. 2+75.00 TO STA. 11+80.00		
							ILLINOIS FED. AID PROJECT				