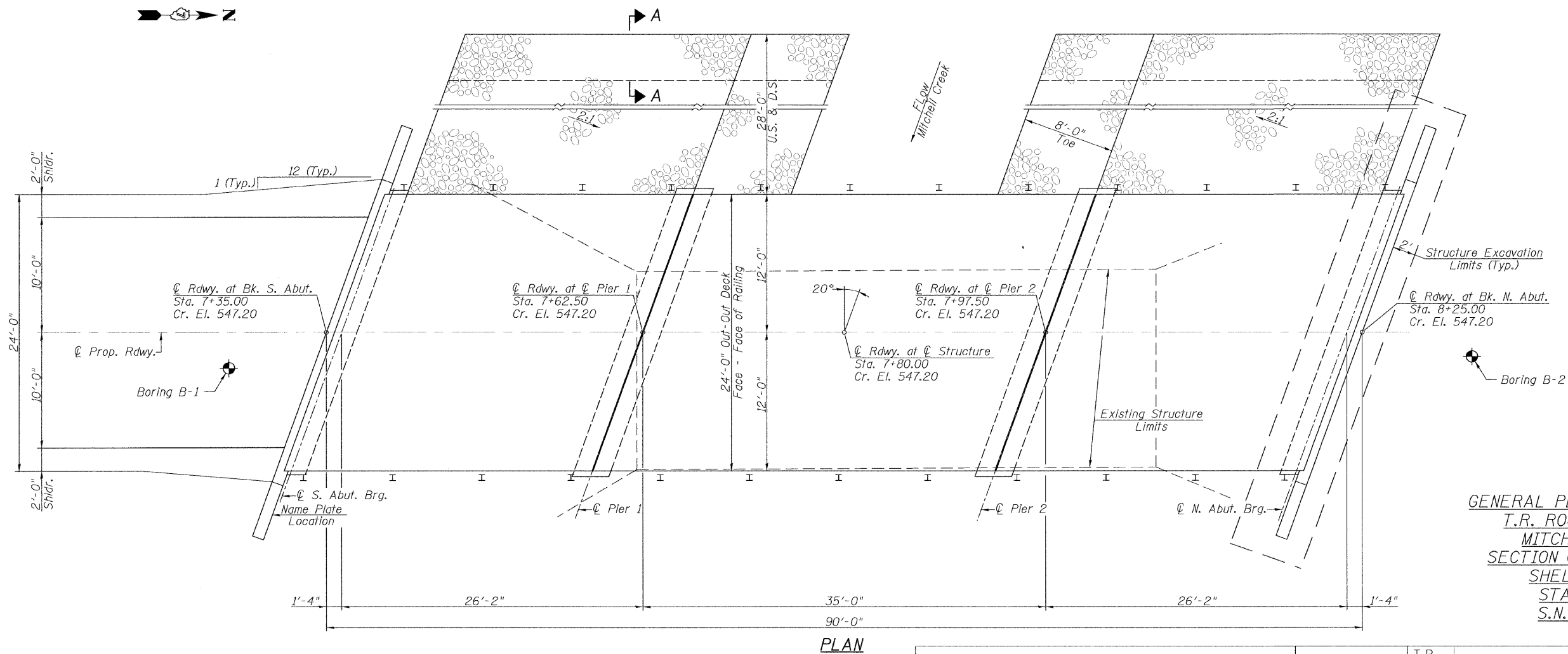
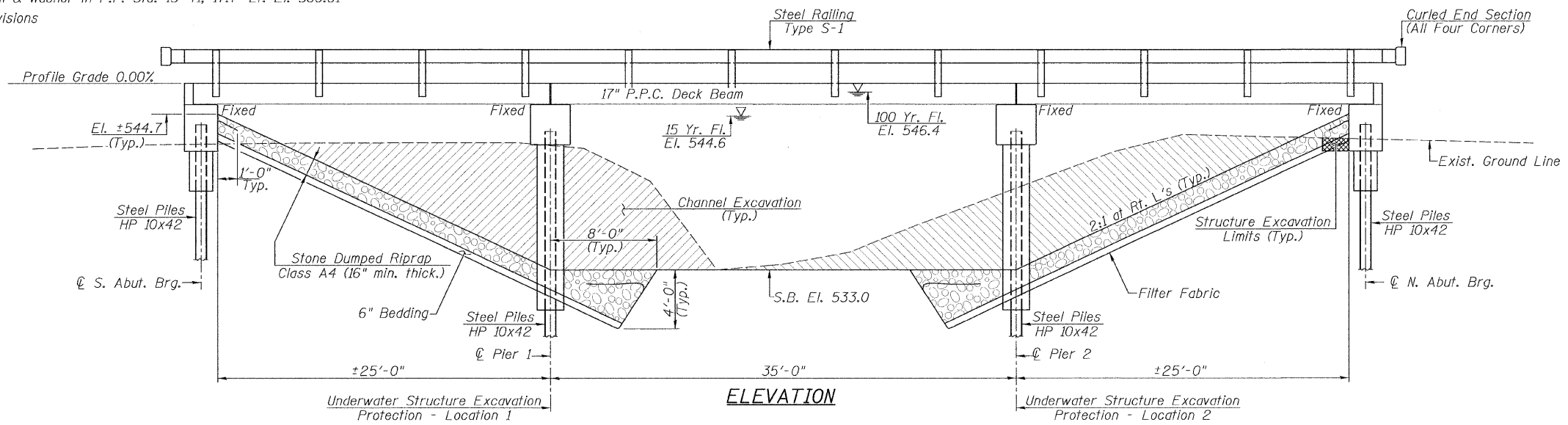


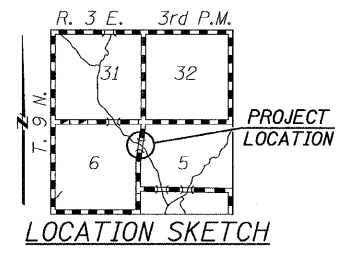
Existing Structure: Single span timber deck on steel stringers supported by closed timber abutments with timber wingwalls. $\pm 45'-0"$ Bk.-Bk. Abutments, $\pm 18'-11"$ Out.-Out. Deck. Steel Railing. $\pm 0^\circ$ Skew. Existing Structure No. 087-3331

Benchmark: BM #1: 16D Nail & Washer in P.P. Sta. 3+23, 20.5' Lt. El. 548.30
 BM #2: 20D Nail & Washer in P.P. Sta. 13+41, 17.7' Lt. El. 560.61

Salvage: See Special Provisions



MITCHELL CREEK
 STA. 7+80.00
 BUILT 20 BY
 SHELBY COUNTY
 SECTION 09-05118-00-BR
 STR. NO. 087-3571 LOADING HL-93
NAME PLATE
 (Standard 515001)



GENERAL PLAN & ELEVATION
 T.R. ROUTE 140 OVER
 MITCHELL CREEK
 SECTION 09-05118-00-BR
 SHELBY COUNTY
 STA. 7+80.00
 S.N. 087-3571

Allen Henderson & Associates, Inc. Civil and Structural Engineers Springfield, IL 62703 Phone: (217)544-8033 IL Design Firm No. 184-001907	SHEET NO. 1	T.R. RTE.	SECTION	COUNTY	TOTAL SHEETS	SHEET NO.
	10 SHEETS	140	09-05118-00-BR	SHELBY	21	4
		STR. NO. 087-3571	CONTRACT NO. 95628			
		FED. ROAD DIST. NO.	ILLINOIS FED. AID PROJECT			