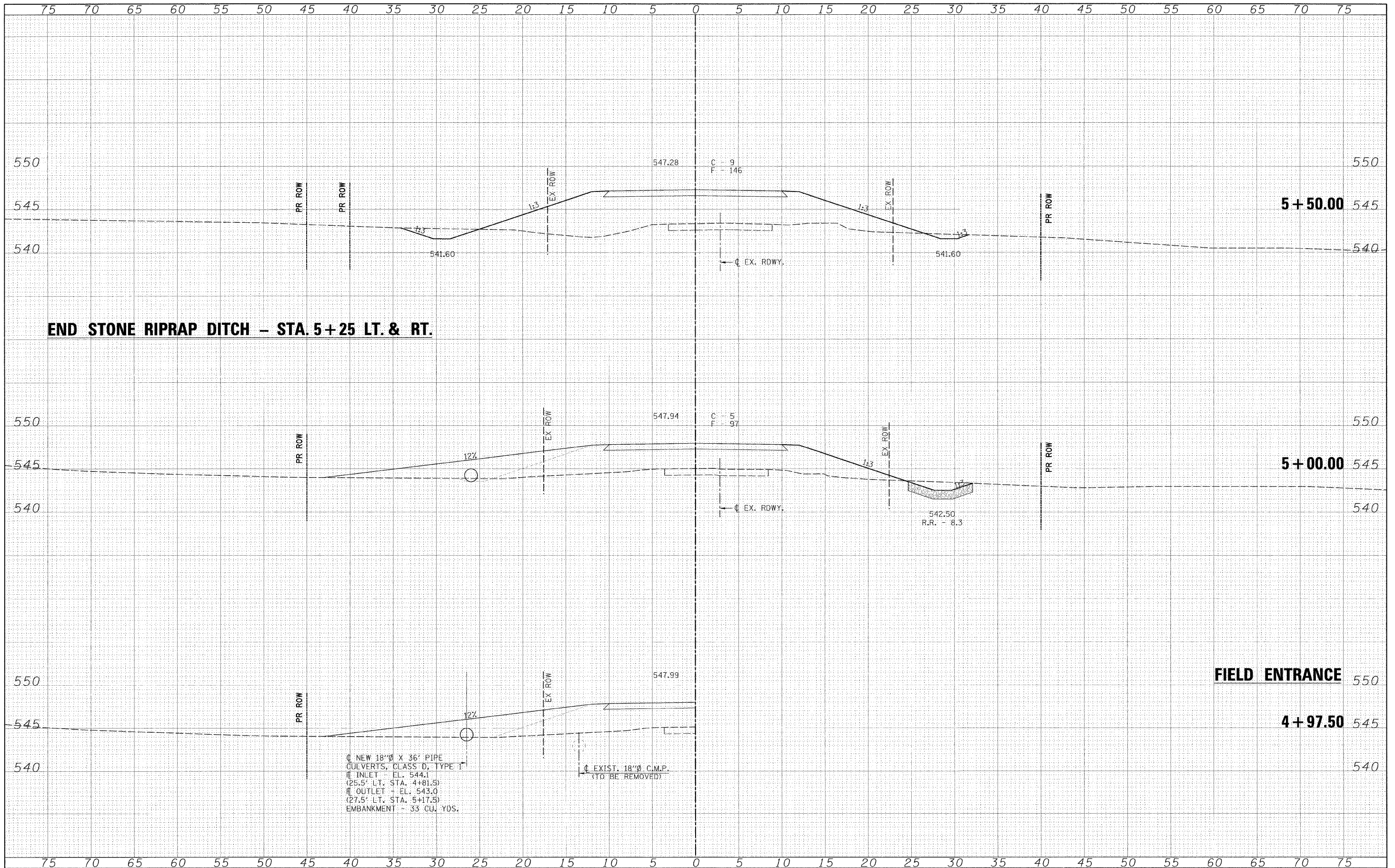


DATE	
BY	
FINAL SURVEY	
SURVEYED	
PLOTTED	
NOTE BOOK	
NO.	
AREAS CHECKED	

DATE	
BY	
ORIGINAL SURVEY	
SURVEYED	
PLOTTED	
NOTE BOOK	
NO.	
AREAS CHECKED	



1 NEW 18" X 36" PIPE
 CULVERTS, CLASS D, TYPE 1
 INLET - EL. 544.1
 (25.5' LT. STA. 4+81.5)
 OUTLET - EL. 543.0
 (27.5' LT. STA. 5+17.5)
 EMBANKMENT - 33 CU. YDS.
 EXIST. 18" C.M.P.
 (TO BE REMOVED)

FILE NAME = \$FILE\$

USER NAME = \$USR\$
 PLOT SCALE = \$SCALE\$
 PLOT DATE = \$DATE\$

DESIGNED -
 DRAWN -
 CHECKED -
 DATE -

REVISED -
 REVISED -
 REVISED -
 REVISED -



Allen Henderson & Associates, Inc.
 Civil and Structural Engineers Springfield, IL.
 62703 Phone: (217)544-8033 IL. Design Firm
 No. 184-001907

CROSS SECTIONS

SCALE: 1" = 5' SHEET NO. 16 OF 21 SHEETS STA. 4+97.51 TO STA. 5+50.00

T.R. RTE.	SECTION	COUNTY	TOTAL SHEETS	SHEET NO.
140	09-05118-00-BR	SHELBY	21	16
FED. ROAD DIST. NO. ILLINOIS FED. AID PROJECT			CONTRACT NO. 95228	