

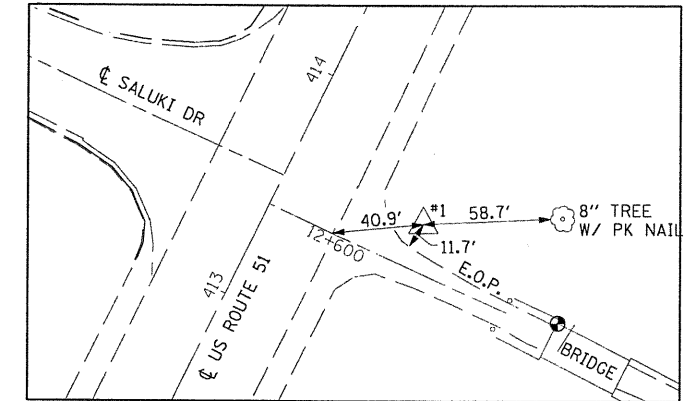
GENERAL NOTES

1. THIS SECTION SHALL BE CONSTRUCTED IN ACCORDANCE WITH THE PLANS, THE "STANDARD SPECIFICATIONS FOR ROAD AND BRIDGE CONSTRUCTION" ADOPTED JANUARY 1, 2007 AND THE SPECIAL PROVISIONS.
2. ALL STATIONING REFERS TO THE CENTERLINE OF NEW CONSTRUCTION.
3. THE LOCATIONS AND / OR DEPTHS OF UNDERGROUND UTILITIES SHOWN HAVE BEEN TAKEN FROM AVAILABLE RECORD INFORMATION FURNISHED BY THE UTILITY OWNERS AND MUST BE CONSIDERED APPROXIMATE. FIELD MARKING OF FACILITIES MAY BE OBTAINED BY PROVIDING A MINIMUM OF 48 HOURS ADVANCE NOTICE TO J.U.L.I.E. @ (800) 892 - 0123.
4. DISPOSAL OF ALL MATERIAL FROM DEMOLITION (PAVEMENT REMOVAL, ETC.) SHALL BE INCLUDED IN THE CONTRACT AND PERFORMED IN ACCORDANCE WITH ALL STATE AND LOCAL CODES.
5. 10 FT TRANSITIONS SHALL BE USED TO MATCH PROPOSED ITEMS OF WORK TO EXISTING ITEMS IN THE FIELD, UNLESS OTHERWISE SHOWN. THE TRANSITIONS SHALL BE PAID FOR AT THE CONTRACT UNIT PRICE FOR THE PROPOSED ITEM OF WORK SPECIFIED.
6. EXCEPT AS NOTED ON THE PLANS, PAVEMENT GRADES SHOWN ARE AT THE TOP OF PAVEMENT SURFACES.
7. JOINTING PLAN SHALL BE IN ACCORDANCE WITH HIGHWAY STANDARD BLR 10-6. TRANSVERSE JOINT SPACING SHALL BE TYPICALLY 15'. PAVEMENT JOINTING PLAN SHALL BE PROVIDED BY CONTRACTOR AND APPROVED BY THE ENGINEER.
8. SEEDING SHALL NOT BE PERMITTED AT ANY TIME WHEN THE GROUND IS FROZEN, WET, OR IN AN UNTILLABLE CONDITION. LOCATIONS TO BE SEEDED WILL BE DETERMINED BY THE ENGINEER.
10. ONLY THOSE TREES DESIGNATED BY THE ENGINEER OR LISTED IN THE TREE REMOVAL SCHEDULE SHALL BE REMOVED. THE CONTRACTOR SHALL PROTECT ALL REMAINING TREES FROM DAMAGE DUE TO HIS OPERATIONS.
11. THE FINISHED EARTHWORK SHALL HAVE A VEGETATION SUSTAINING SOIL COVERING THE TOP FOUR INCHES IN AREAS TO BE SEEDED OR SODDED. THE VEGETATION SUSTAINING SOIL REQUIRED WILL NOT BE PAID FOR SEPARATELY BUT SHALL BE INCLUDED IN THE COST OF EARTH EXCAVATION.

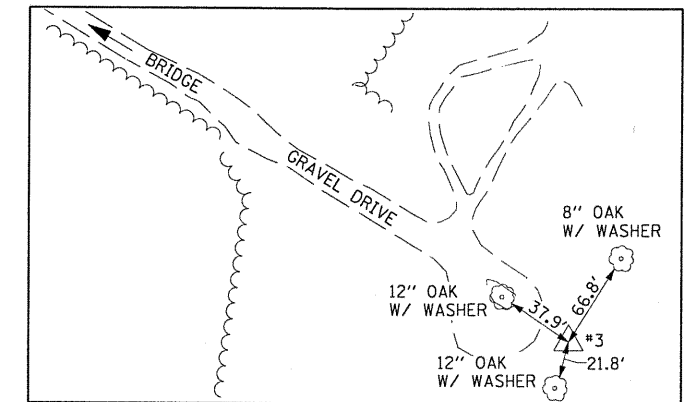
BENCHMARK

BM #2
CHISELED SQUARE ON THE NORTHWEST
CORNER OF EXISTING BRIDGE
STA 60+54.64, 2.42' LT ELEVATION = 415.78

REFERENCE TIES



CP 1 #5 REBAR HR 5 CAP
N:379625.45, E: 2571633.30
ELEVATION: 413.51



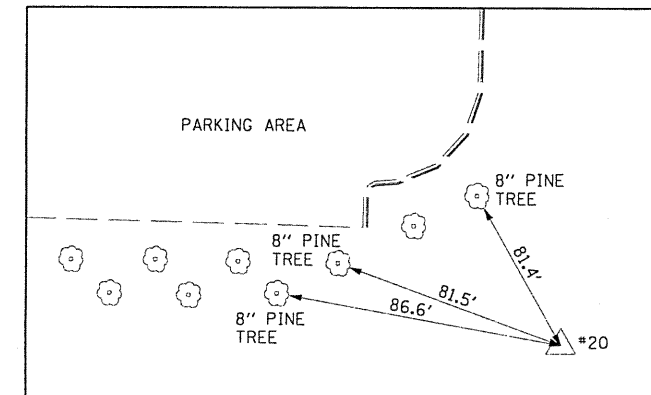
CP 3 60 D NAIL
N:379243.22, E: 2572211.19
ELEVATION: 429.36

UTILITY OWNERS

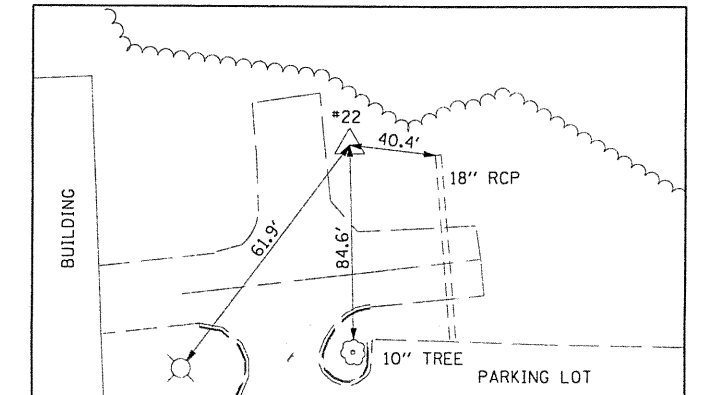
POWER/GAS:	AMEREN CIPS KAREN DIETDERICH (217) 234-0443	TELEPHONE:	MCI ART SHERIDAN (314) 298-6144
SEWER:	CITY OF CARBONDALE GARY BELLES (618) 549-5302 EXT. 270		VERIZON NORTH, INC. MARY RUTH WILLIS (309) 454-1470
WATER:	SOUTH HIGHWAY WATER DISTRICT CAROL BANKS (618) 529-5313	CABLE T.V.:	MEDIA COM RON GRANT (618) 993-5216 EXT. 221 360 NETWORKS HENRY KLO BUCAR (406) 496-6510

THE FOLLOWING RATES OF APPLICATION HAVE BEEN USED IN CALCULATING PLAN QUANTITIES:

GRANULAR MATERIALS	2.05 TONS / CU YD
INCIDENTAL HMA RESURFACING	112 LBS / 50 YD / IN



CP 20 60 D NAIL
N:3783382.38, E: 2571965.67
ELEVATION: 458.44



CP 22 60 D NAIL
N:378695.18, E: 2571700.84
ELEVATION: 445.41

HURST-ROSCHKE ENGINEERS, INC.
HILLSBORO, ILLINOIS 62049
(217) 532-3959 FAX (217) 532-3212

HR
HURST-ROSCHKE
ENGINEERS, INC.

FILE NAME =	USER NAME = HURST-ROSCHKE	DESIGNED - JJC	REVISED -
\\365-4248-siuc-research-park-phase-11\gn\genmotse\dgn		DRAWN - UJ	REVISED -
		CHECKED - MAR	REVISED -
		DATE - 02-27-09	REVISED -

STATE OF ILLINOIS
DEPARTMENT OF TRANSPORTATION

GENERAL NOTES

SCALE: NTS SHEET NO. OF SHEETS STA. TO STA.

F.A.P. RTE.	SECTION	COUNTY	TOTAL SHEETS	SHEET NO.
	05-00002-00-RP	KANKAKEE	35	2
CONTRACT NO. 99425			FED. ROAD DIST. NO. 9 ILLINOIS FED. AID PROJECT	