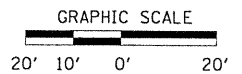
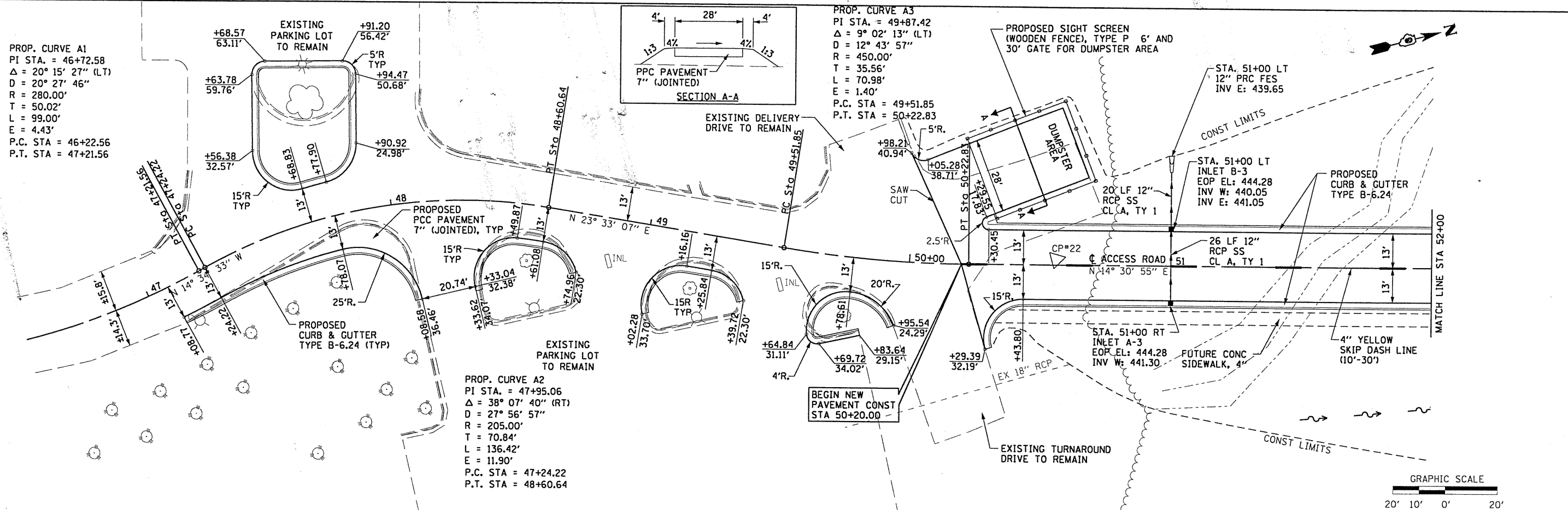
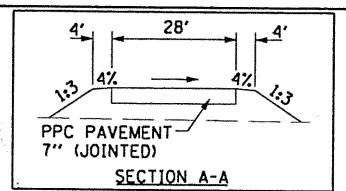


PROP. CURVE A1
 PI STA. = 46+72.58
 $\Delta = 20^\circ 15' 27''$ (LT)
 $D = 20^\circ 27' 46''$
 $R = 280.00'$
 $T = 50.02'$
 $L = 99.00'$
 $E = 4.43'$
 P.C. STA = 46+22.56
 P.T. STA = 47+21.56

PROP. CURVE A3
 PI STA. = 49+87.42
 $\Delta = 9^\circ 02' 13''$ (LT)
 $D = 12^\circ 43' 57''$
 $R = 450.00'$
 $T = 35.56'$
 $L = 70.98'$
 $E = 1.40'$
 P.C. STA = 49+51.85
 P.T. STA = 50+22.83

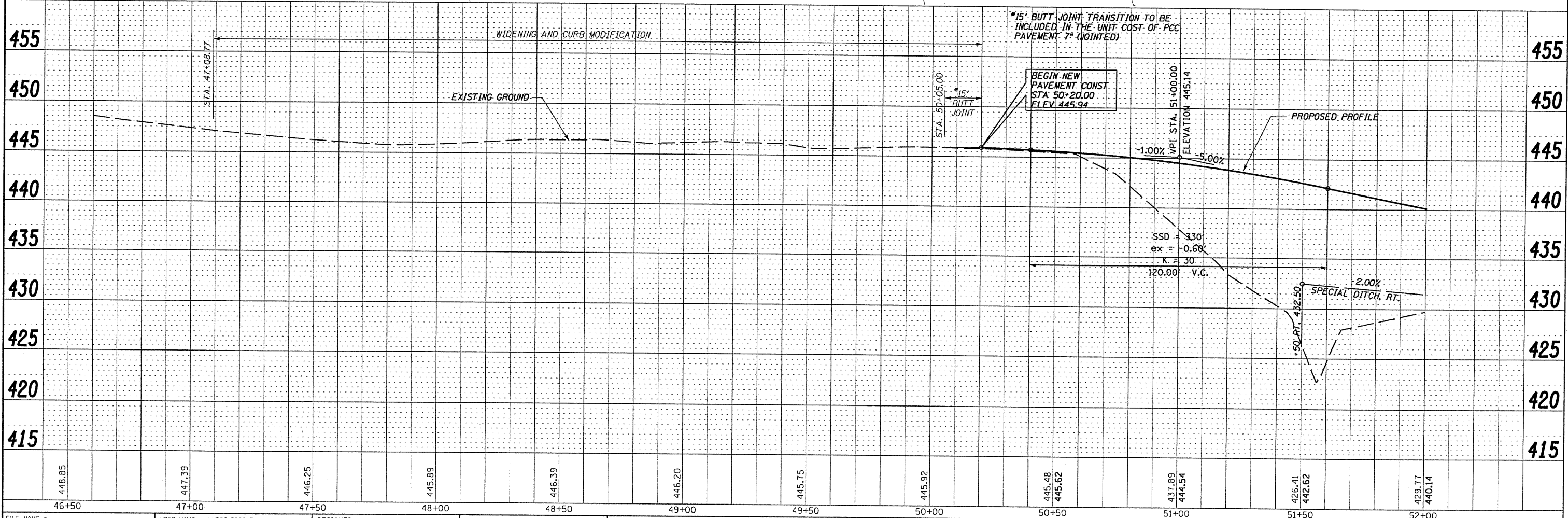
PROP. CURVE A2
 PI STA. = 47+95.06
 $\Delta = 38^\circ 07' 40''$ (RT)
 $D = 27^\circ 56' 57''$
 $R = 205.00'$
 $T = 70.84'$
 $L = 136.42'$
 $E = 11.90'$
 P.C. STA = 47+24.22
 P.T. STA = 48+60.64



DATE	
BY	
DESIGNED	
DRAWN	
CHECKED	
DATE	

DATE	
BY	
DESIGNED	
DRAWN	
CHECKED	
DATE	

HURST-ROSCHKE ENGINEERS, INC.
 HILLSBORO, ILLINOIS 62049
 (217) 532-3959 FAX (217) 532-3212



FILE NAME =	USER NAME = HURST-ROSCHKE	DESIGNED -	REVISED -	STATE OF ILLINOIS DEPARTMENT OF TRANSPORTATION	PROPOSED PLAN AND PROFILE	F.A. RTE.	SECTION	COUNTY	TOTAL SHEETS	SHEET NO.
ts\365-484B_SUC_Research_Park_Phase_11\0g	np&p01.dgn	DRAWN -	REVISED -			05-00002-00-RP	JACKSON	35	7	
PLOT SCALE = 48.828' / IN.	CHECKED -	REVISED -	REVISED -			CONTRACT NO. 99425				
PLOT DATE = 7/13/2010	DATE -	REVISED -	REVISED -			FED. ROAD DIST. NO. 9 ILLINOIS FED. AID PROJECT				