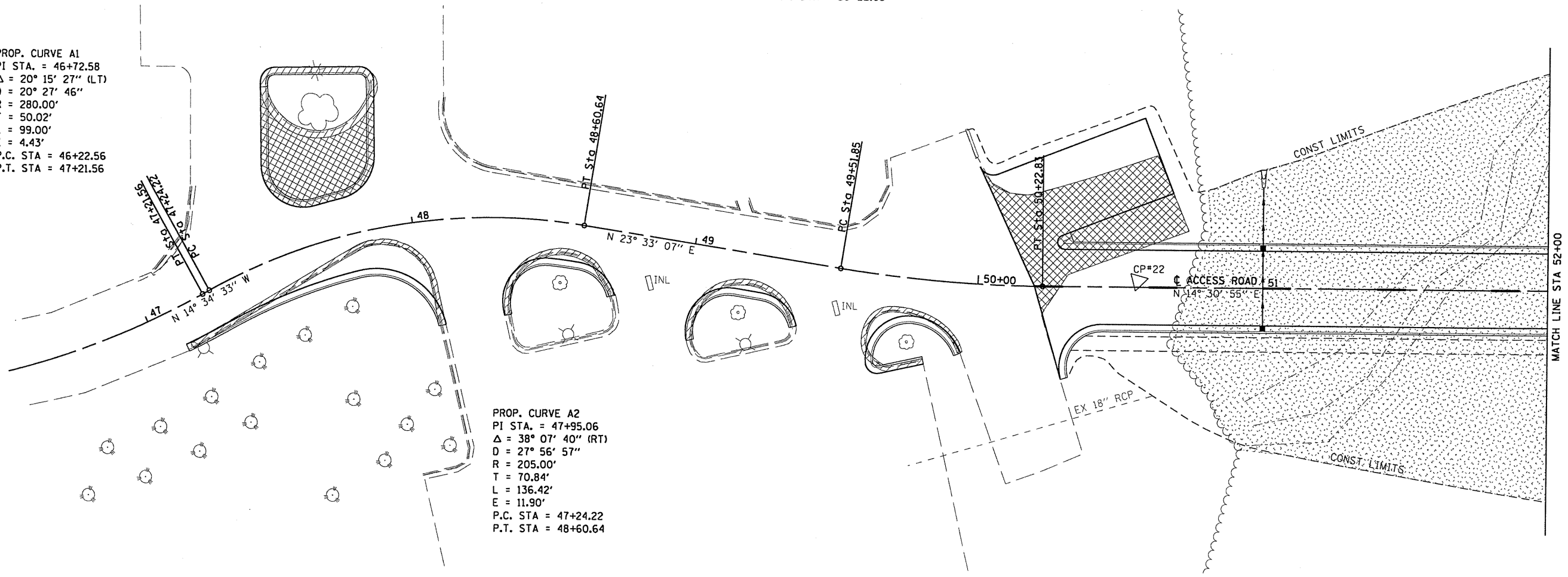





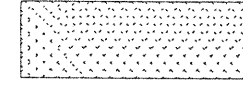
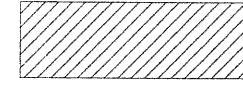
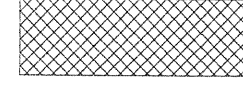

PROP. CURVE A3
 PI STA. = 49+87.42
 $\Delta = 9^\circ 02' 13''$ (LT)
 D = 12° 43' 57"
 R = 450.00'
 T = 35.56'
 L = 70.98'
 E = 1.40'
 P.C. STA = 49+51.85
 P.T. STA = 50+22.83

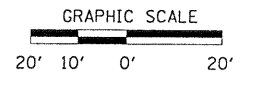
PROP. CURVE A1
 PI STA. = 46+72.58
 $\Delta = 20^\circ 15' 27''$ (LT)
 D = 20° 27' 46"
 R = 280.00'
 T = 50.02'
 L = 99.00'
 E = 4.43'
 P.C. STA = 46+22.56
 P.T. STA = 47+21.56



PROP. CURVE A2
 PI STA. = 47+95.06
 $\Delta = 38^\circ 07' 40''$ (RT)
 D = 27° 56' 57"
 R = 205.00'
 T = 70.84'
 L = 136.42'
 E = 11.90'
 P.C. STA = 47+24.22
 P.T. STA = 48+60.64

LEGEND

-  TREE REMOVAL
-  TREE REMOVAL, ACRES
-  COMBINATION CURB AND GUTTER REMOVAL
-  PAVEMENT REMOVAL
-  PAVED SHOULDER REMOVAL



HURST-ROSCHKE ENGINEERS, INC.
 HILLSBORO, ILLINOIS 62049
 (217)532-3959 FAX (217)532-3212



FILE NAME =	USER NAME = HURST-ROSCHKE	DESIGNED - JJC	REVISED -
ti\365-4048_suc_research_park_phase.1\dgn\remov21.dgn		DRAWN - UJ	REVISED -
		CHECKED - MAR	REVISED -
		DATE -	REVISED -

**STATE OF ILLINOIS
 DEPARTMENT OF TRANSPORTATION**

REMOVAL PLAN

SCALE: 1:20 SHEET NO. 1 OF 3 SHEETS STA. 46+50 TO STA. 52+00

F.A. RTE.	SECTION	COUNTY	TOTAL SHEETS	SHEET NO.
	05-00002-00-RP	JACKSON	35	11
CONTRACT NO. 99425				

ILLINOIS FED. AID PROJECT