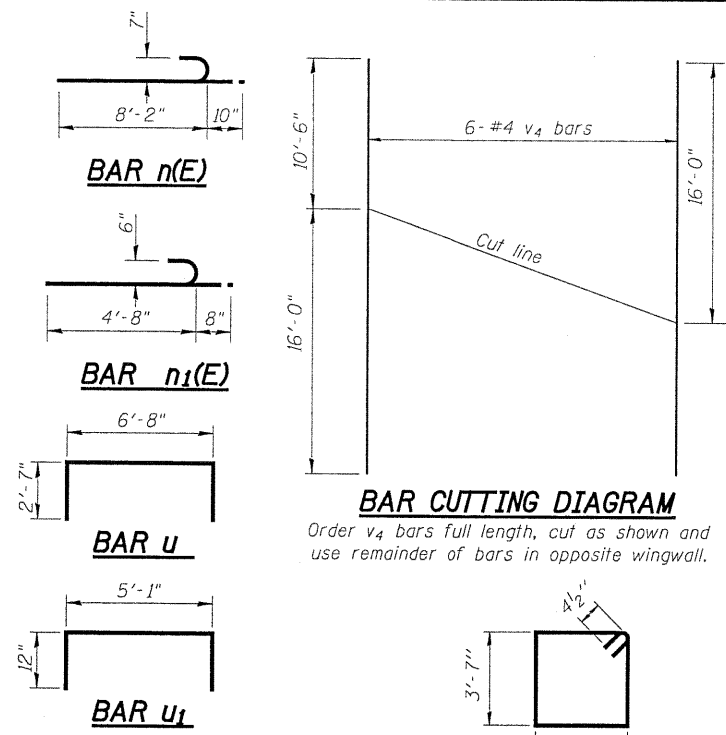


STATE OF ILLINOIS
DEPARTMENT OF TRANSPORTATION



BAR CUTTING DIAGRAM
Order v4 bars full length, cut as shown and use remainder of bars in opposite wingwall.

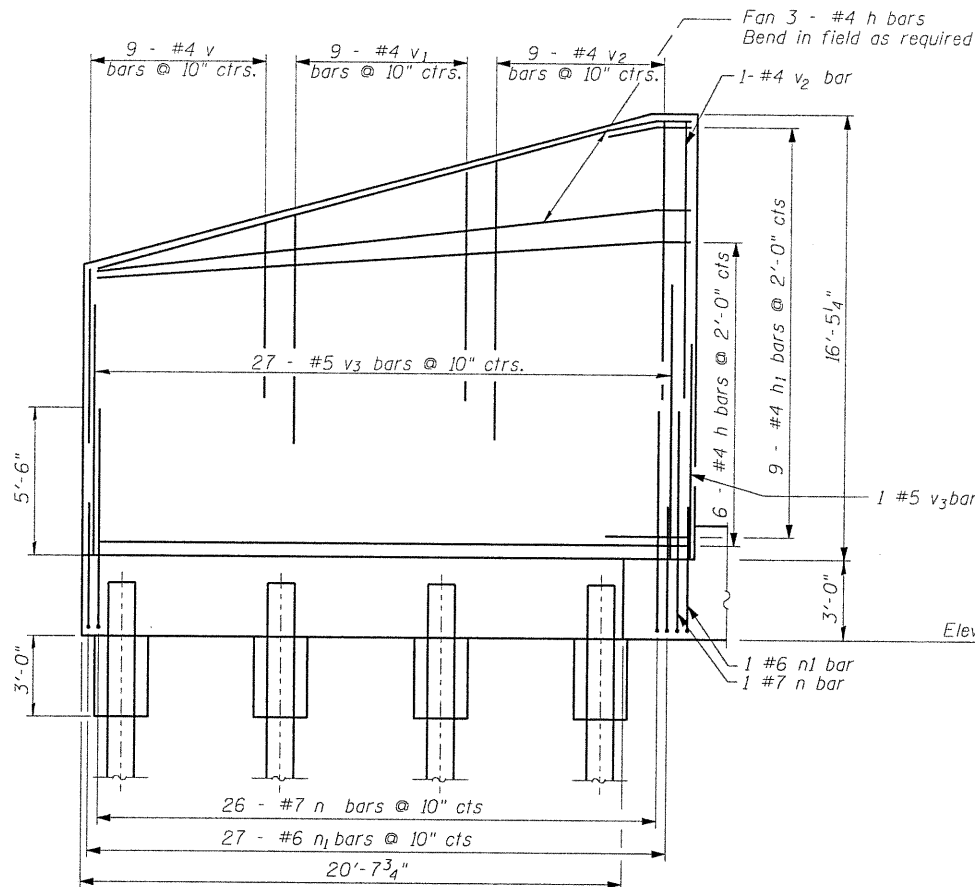
**ABUTMENT
BILL OF MATERIAL**
(both abutments)

Bar	No.	Size	Length	Shape
h	108	#4	21'-8"	—
h1	36	#4	2'-5"	—
h2	72	#4	2'-9"	—
n(E)	108	#7	9'-0"	—
n1(E)	112	#6	5'-4"	—
s	102	#4	13'-3"	—
u	192	#6	11'-10"	—
u1	24	#4	7'-1"	—
v	36	#4	6'-5"	—
v1	36	#4	8'-5"	—
v2	40	#4	10'-3"	—
v3	112	#5	8'-0"	—
v4	12	#4	26'-6"	—
w	56	#7	31'-6"	—
w1	80	#6	21'-8"	—
w2	32	#5	4'-0"	—
Concrete Structures	Cu. Yd.		179.8	
Reinforcement Bars, Epoxy Coated	Pound		2,885	
Reinforcement Bars	Pound		14,305	
Furnishing Steel Piles HP12x53	Foot		1,775	
Driving Piles	Foot		1,775	
Test Pile Steel HP12x53	Each		2	
Concrete Encasement	Cu. Yd.		18.2	

For details of piles and Concrete Encasement, see sheet 5 of 6.
Bars indicated thus 14 x 2 - #7, etc. indicates 14 lines of bars with 2 lengths per line.

DESIGNED	MEB
CHECKED	AJW
DRAWN	MLK & AJW
CHECKED	JSP

HR
HURST-ROSCHÉ
ENGINEERS, INC.
PROFESSIONAL DESIGN NUMBER: 184-000298

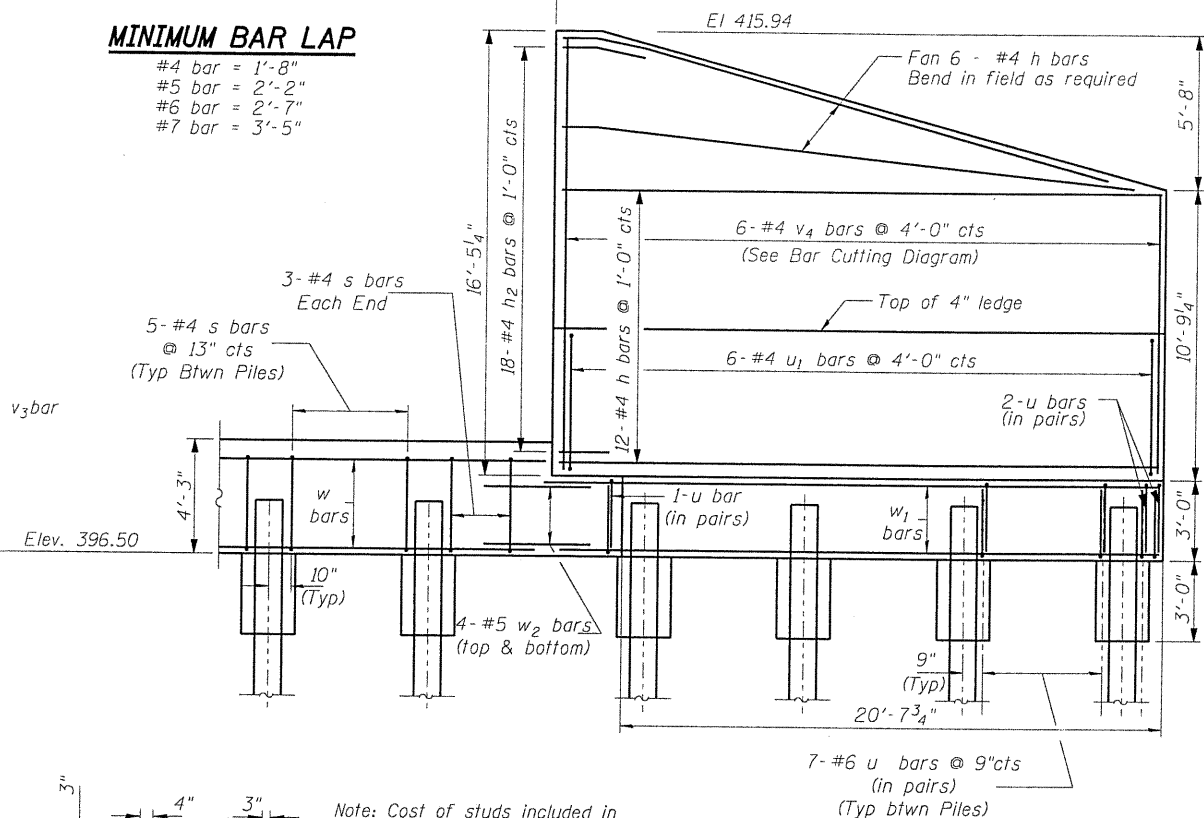


WINGWALL ELEVATION

Showing Reinforcement in Back Face of Wingwall (4" ledge not shown for clarity)

MINIMUM BAR LAP

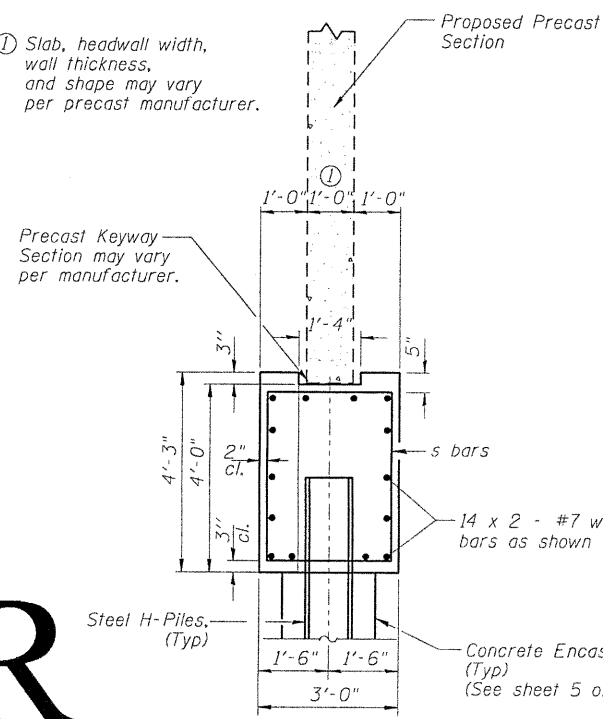
- #4 bar = 1'-8"
- #5 bar = 2'-2"
- #6 bar = 2'-7"
- #7 bar = 3'-5"



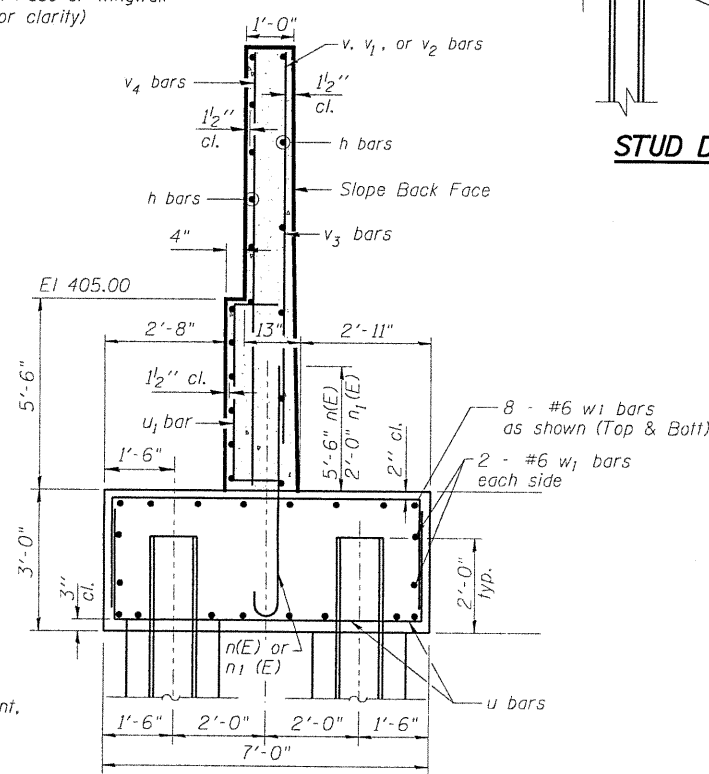
WINGWALL ELEVATION

Showing Reinforcement in Front Face of Wingwall

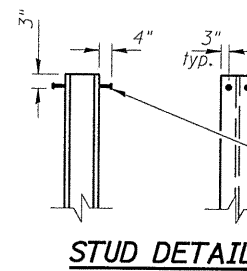
① Slab, headwall width, wall thickness, and shape may vary per precast manufacturer.



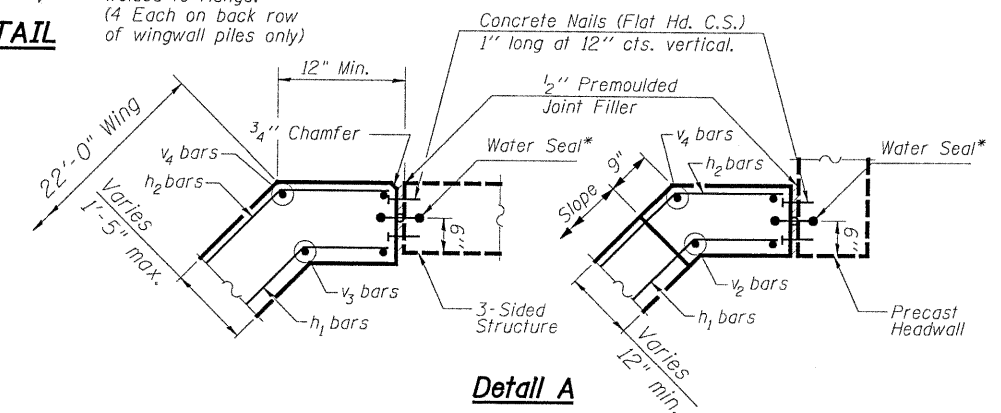
SECTION A-A
NOT TO SCALE



SECTION B-B
NOT TO SCALE



Note: Cost of studs included in cost of Furnishing Steel Piles HP12x53



Detail A

* 6" Hollow bulb type nonmetallic water seal to be cast into end sections of the three-sided structure and headwalls. (6" from top of wall to top of footing)

FOOTING & WINGWALL DETAILS
STRUCTURE NO. 039-3268

SHEET NO. 3	S.B.I. RTE.	SECTION	COUNTY	TOTAL SHEETS	SHEET NO.
	2	05-00002-00-RP	JACKSON	35	19
6 SHEETS	CONTRACT NO. 99425				
FED. ROAD DIST. NO. 9 ILLINOIS FED. AID PROJECT					

HRE # 365-4048