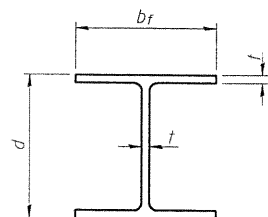
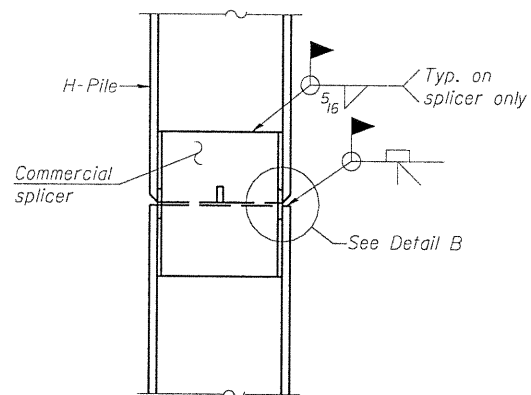


STATE OF ILLINOIS
DEPARTMENT OF TRANSPORTATION

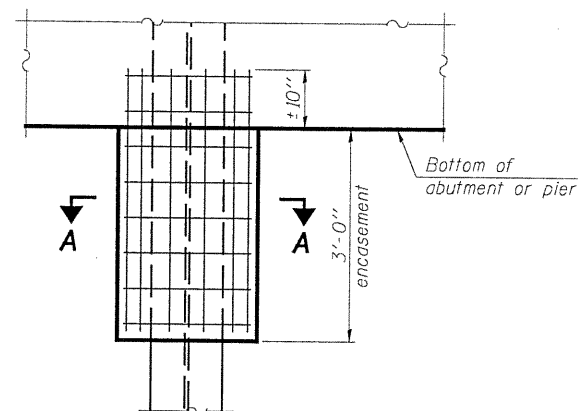


STEEL PILE TABLE

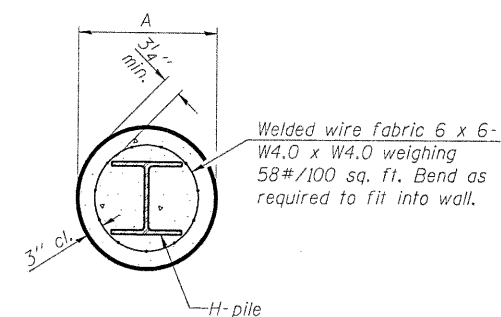
Designation	Depth d	Flange width b _f	Web and Flange thickness t	Encasement diameter A
HP 14x117	14 1/4"	14 7/8"	13 1/16"	30"
x102	14"	14 3/4"	11 1/16"	30"
x89	13 7/8"	14 3/4"	5 5/8"	30"
x73	13 5/8"	14 5/8"	1/2"	30"
HP 12x84	12 1/4"	12 1/4"	11 1/16"	24"
x74	12 1/8"	12 1/4"	5 5/8"	24"
x63	12"	12 1/8"	1/2"	24"
x53	11 3/4"	12"	7 1/16"	24"
HP 10x57	10"	10 1/4"	9 1/16"	24"
x42	9 3/4"	10 1/8"	7 1/16"	24"
HP 8x36	8"	8 1/8"	7 1/16"	18"



ELEVATION



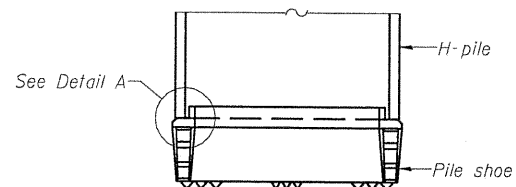
ELEVATION



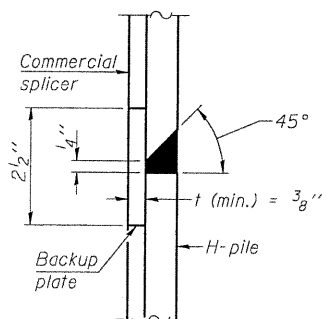
SECTION A-A

Note:
Forms for encasement may be omitted when soil conditions permit.

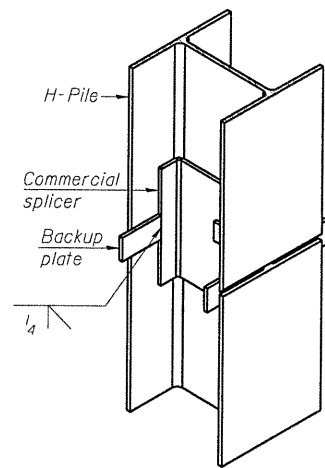
PILE ENCASEMENT



ELEVATION

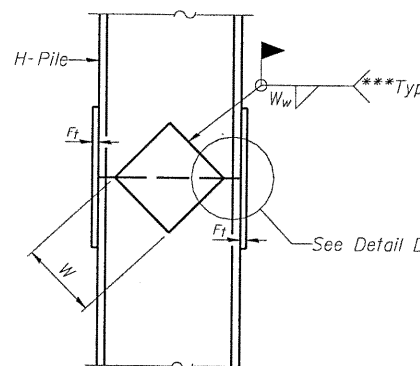


DETAIL "B"

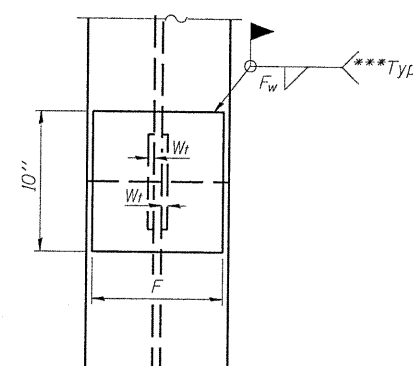


ISOMETRIC VIEW

WELDED COMMERCIAL SPLICE



ELEVATION

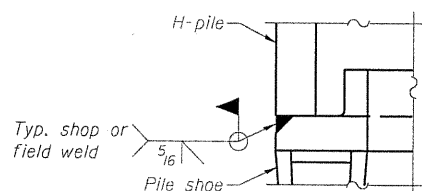


END VIEW

Designation	F	F _r	F _w	W	W _r	W _w
HP 14x117	12 1/2"	1"	7 3/8"	7 3/4"	5 5/8"	1 1/2"
x102	12 1/2"	7/8"	3 3/4"	7 3/4"	5 5/8"	1 1/2"
x89	12 1/2"	3/4"	11 1/16"	7 3/4"	5 5/8"	1 1/2"
x73	12 1/2"	5/8"	9 1/16"	7 3/4"	5 5/8"	1 1/2"
HP 12x84	10"	7/8"	11 1/16"	6 1/2"	5 5/8"	1 1/2"
x74	10"	7/8"	11 1/16"	6 1/2"	5 5/8"	1 1/2"
x63	10"	5/8"	1 1/2"	6 1/2"	1 1/2"	3 3/8"
x53	10"	5/8"	1 1/2"	6 1/2"	1 1/2"	3 3/8"
HP 10x57	8"	3/4"	9 1/16"	5 1/4"	1 1/2"	3 3/8"
x42	8"	5/8"	9 1/16"	5 1/4"	1 1/2"	3 3/8"
HP 8x36	7"	5/8"	7 1/16"	4 1/4"	1 1/2"	3 3/8"

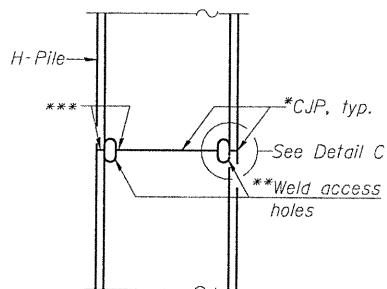
WELDED PLATE FIELD SPLICE

**HP PILE DETAILS
STRUCTURE NO. 039-3268**

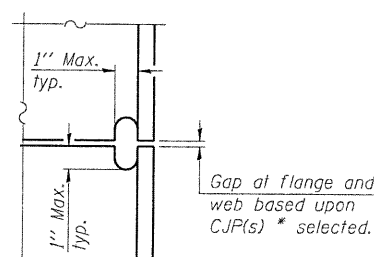


DETAIL A

H-PILE SHOE ATTACHMENT

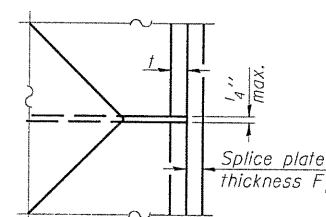


ELEVATION



DETAIL C

COMPLETE PENETRATION WELD SPLICE



DETAIL D

* Use joint conforming to Figure 3.4 in AWS D1.1, Structure Welding Code - Steel.
** Preparation per Fig. 5.2 in AWS D1.1, Structure Welding Code - Steel.
*** Interrupt welds 1/4" from end of each pile.

Note:
The steel H-piles shall be according to AASHTO M270 Grade 50.

SHEET NO. 5	S.B.I. RTE.	SECTION	COUNTY	TOTAL SHEETS	SHEET NO.
6 SHEETS	2	05-00002-00-RP	JACKSON	35	21
CONTRACT NO. 99425					
FED. ROAD DIST. NO. 9 ILLINOIS FED. AID PROJECT					

DESIGNED	MEB
CHECKED	JSP
DRAWN	CJC
CHECKED	MEB

HR
HURST-ROSCHÉ
ENGINEERS, INC.
PROFESSIONAL DESIGN NUMBER: 184-000298

F-HP

10-1-08

HRE # 365-4048