

STATE OF ILLINOIS  
DEPARTMENT OF TRANSPORTATION

F.A.I. RTE.	SECTION	COUNTY	TOTAL SHEETS	SHEET NO.
	*	**	12	1
		ILLINOIS	CONTRACT NO. 66M08	
*D3 SFY WARNING SIGNS 2022-01				
**BUREAU AND LASALLE				

**INDEX OF SHEETS**

- 1 COVER SHEET
- 2 GENERAL NOTES
- 3 SUMMARY OF QUANTITIES
- 4 SCHEDULES
- 5-11 PROPOSED PLAN SHEETS
- 12 DETAILS

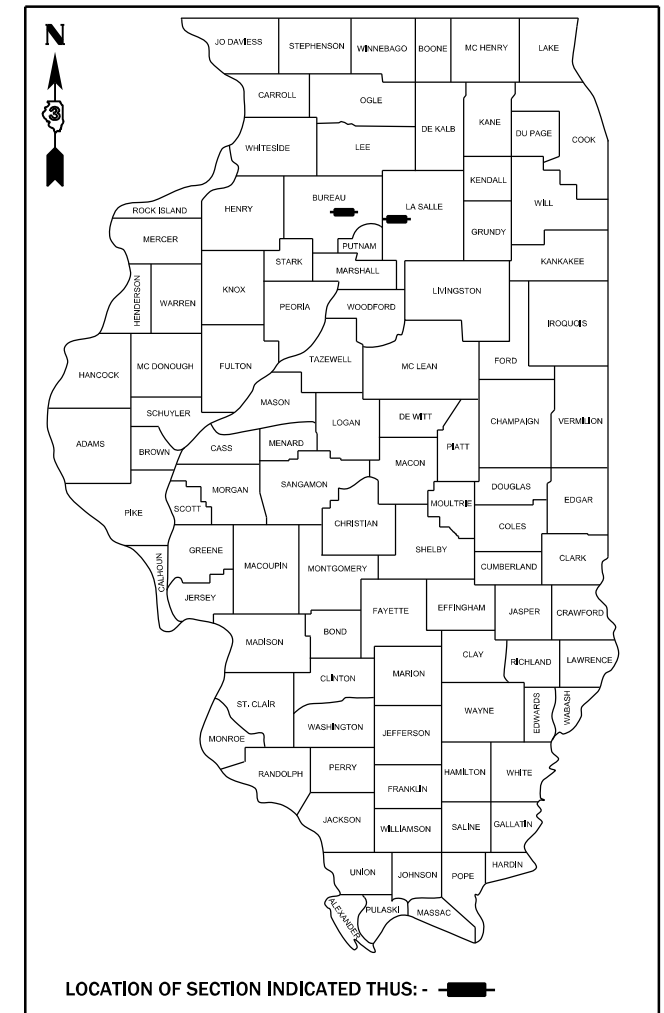
**HIGHWAY STANDARDS**

- 000001-08 STANDARD SYMBOLS, ABBREVIATIONS AND PATTERNS
- 001006 DECIMAL OF AN INCH AND OF A FOOT
- 701101-05 OFF-ROAD OPERATIONS, MULTILANE, 15' (4.5 m) TO 24" (600 mm) FROM PAVEMENT EDGE
- 701106-02 OFF-ROAD OPERATIONS, MULTILANE, MORE THAN 15' (4.5 m) AWAY
- 701456-05 PARTIAL EXIT RAMP CLOSURE FREEWAY/EXPRESSWAY
- 720001-01 SIGN PANEL MOUNTING DETAILS
- 720006-04 SIGN PANEL ERECTION DETAILS
- 701901-08 TRAFFIC CONTROL DEVICES
- 878001-11 CONCRETE FOUNDATION DETAILS

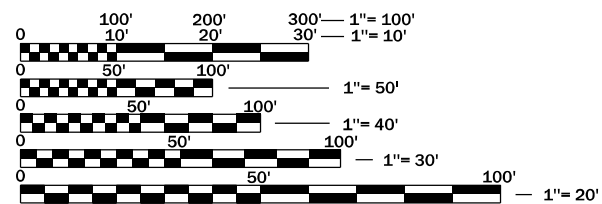
# PROPOSED HIGHWAY PLANS

## FAI 80 (I-80) SECTION D3 SFY WARNING SIGNS 2022-01 PROJECT: HSIP - 6AGP (496) CHANGEABLE SPEED WARNING SIGNS BUREAU & LASALLE COUNTIES

C-93-110-21



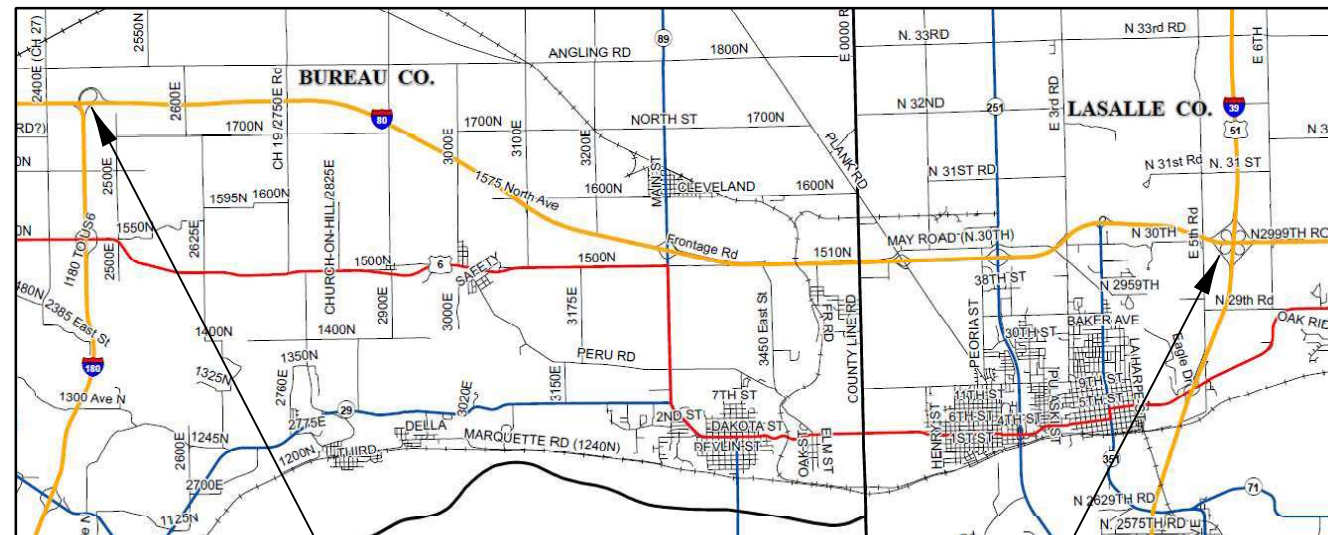
LOCATION OF SECTION INDICATED THIS: - [Arrow]



FULL SIZE PLANS HAVE BEEN PREPARED USING STANDARD ENGINEERING SCALES. REDUCED SIZED PLANS WILL NOT CONFORM TO STANDARD SCALES. IN MAKING MEASUREMENTS ON REDUCED PLANS, THE ABOVE SCALES MAY BE USED.

J.U.L.I.E.  
JOINT UTILITY LOCATION INFORMATION FOR EXCAVATION  
1-800-892-0123  
OR 811

PROJECT ENGINEER: JOE KANNEL, P.E.  
UNIT CHIEF: MARC BUDZYNSKI, P.E.  
DISTRICT 3 NO. (815) 434-6131  
CONTRACT NO. 66M08



LOCATION 1  
I-80 AND I-180

LOCATION 2  
I-80 AND I-39

GROSS & NET LENGTH = VARIOUS SPOT LOCATIONS

STATE OF ILLINOIS  
DEPARTMENT OF TRANSPORTATION

SUBMITTED July 13, 2021

*[Signature]*  
REGIONAL ENGINEER

August 13, 2021

*[Signature]*  
ENGINEER OF DESIGN AND ENVIRONMENT

August 13, 2021

*[Signature]*  
DIRECTOR OF HIGHWAYS PROJECT IMPLEMENTATION

PRINTED BY THE AUTHORITY  
OF THE STATE OF ILLINOIS

**GENERAL NOTES**

FOR STABILIZATION, ALL TYPE III BARRICADES WILL REQUIRE A MINIMUM OF FOUR SAND BAGS PER BARRICADE.

ANY REFERENCE TO A STANDARD IN THESE PLANS SHALL BE INTERPRETED TO MEAN THE EDITION AS INDICATED BY THE SUBNUMBER SHOWN IN THE LIST OF STANDARDS OR THE COPY INCLUDED IN THESE PLANS.

THE CONTRACTOR SHALL CONTACT JULIE AT LEAST 48 HOURS PRIOR TO EXCAVATION TO DETERMINE WHICH UTILITIES ARE IN THE AREA.

**COMMITMENTS:**

MODEL: \\MODELS\MJMF5  
FILE: \\models\cspw\work\wisda\budzynskim\074707B\BID366M08-sh-covr.dgn

\*D3 SFY WARNING SIGNS 2022-01  
\*\*BUREAU AND LASALLE

USER NAME = budzynskim	DESIGNED -	REVISED -	<b>STATE OF ILLINOIS DEPARTMENT OF TRANSPORTATION</b>	<b>GENERAL NOTES</b>	F.A.I. RTE.	SECTION	COUNTY	TOTAL SHEETS	SHEET NO.	
	DRAWN -	REVISED -			VAR	*	**	12	2	
PLOT SCALE = 100.0000' / in.	CHECKED -	REVISED -			CONTRACT 66M08					
PLOT DATE = 7/13/2021	DATE -	REVISED -			SCALE:	SHEET	OF	SHEETS	STA.	TO STA.

CODE NO.	ITEM	UNIT	TOTAL QUANTITY	CONSTRUCTION CODE	
				BUREAU CO.	LASALLE CO.
				SAFETY	SAFETY
				0021	0021
				RURAL	RURAL
				90% FED 10% STATE	90% FED 10% STATE
67100100	MOBILIZATION	L SUM	1	0.5	0.5
87502720	TRAFFIC SIGNAL POST, ALUMINUM 18 FT.	EACH	7	3	4
87800100	CONCRETE FOUNDATION, TYPE A	FOOT	21	9	12
X0320030	PERMANENT RADAR SPEED SIGN	EACH	7	3	4
X7010216	TRAFFIC CONTROL AND PROTECTION, (SPECIAL)	L SUM	1	0.5	0.5

MODEL: \\MODELM\A\FILES  
 FILE: \\MODELM\A\FILES\work\sidejob\budzynskim\0747078\BID366M08-shr-cover.dwg

\*D3 SFY WARNING SIGNS 2022-01  
 \*\*BUREAU AND LASALLE

USER NAME = budzynskim	DESIGNED -	REVISED -	<b>STATE OF ILLINOIS DEPARTMENT OF TRANSPORTATION</b>	<b>SUMMARY OF QUANTITIES</b>			F.A.I. RTE.	SECTION	COUNTY	TOTAL SHEETS	SHEET NO.
PLOT SCALE = 100,0000 ' / in.	DRAWN -	REVISED -					VAR	*	**	12	3
PLOT DATE = 7/13/2021	CHECKED -	REVISED -		SCALE: SHEET OF SHEETS STA. TO STA.			CONTRACT 66M08				
	DATE -	REVISED -					ILLINOIS FED. AID PROJECT				

**CHANGEABLE SPEED MESSAGE SIGN SCHEDULE**

LOCATION	STA	OFFSET	PROPOSED ADVISORY SPEED	CONCRETE FOUNDATION	TRAFFIC SIGNAL POST	PERMANENT RADAR SPEED
				TYPE A FOOT	ALUMINUM, 18' EACH	SIGN EACH
<b>I-80 / I-39 RAMPS</b>						
I-80 EB TO I-39 SB	174+38	15' RT	50 MPH	3	1	1
I-80 WB TO I-39 NB	273+35	15' RT	50 MPH	3	1	1
I-39 NB to I-80 EB	225+85	15' RT	50 MPH	3	1	1
I-39 SB to I-80 WB	122+55	15' RT	50 MPH	3	1	1
<b>LASALLE COUNTY TOTAL</b>				<b>12</b>	<b>4</b>	<b>4</b>
<b>I-80 / I-180 RAMPS</b>						
I-80 WB to I-180 SB	775+12	15' RT	50 MPH	3	1	1
I-180 NB to I-80 EB	1628+83	15' RT	40 MPH	3	1	1
I-180 NB to I-80 WB	690+24	31' LT	35 MPH	3	1	1
<b>BUREAU COUNTY TOTAL</b>				<b>9</b>	<b>3</b>	<b>3</b>
<b>TOTAL</b>				<b>21</b>	<b>7</b>	<b>7</b>

MODEL: MODEL.MAFS  
 FILE: MAFS.ctb  
 C:\Users\budzynskim\Documents\66M08-18-2021\66M08-18-2021.dwg

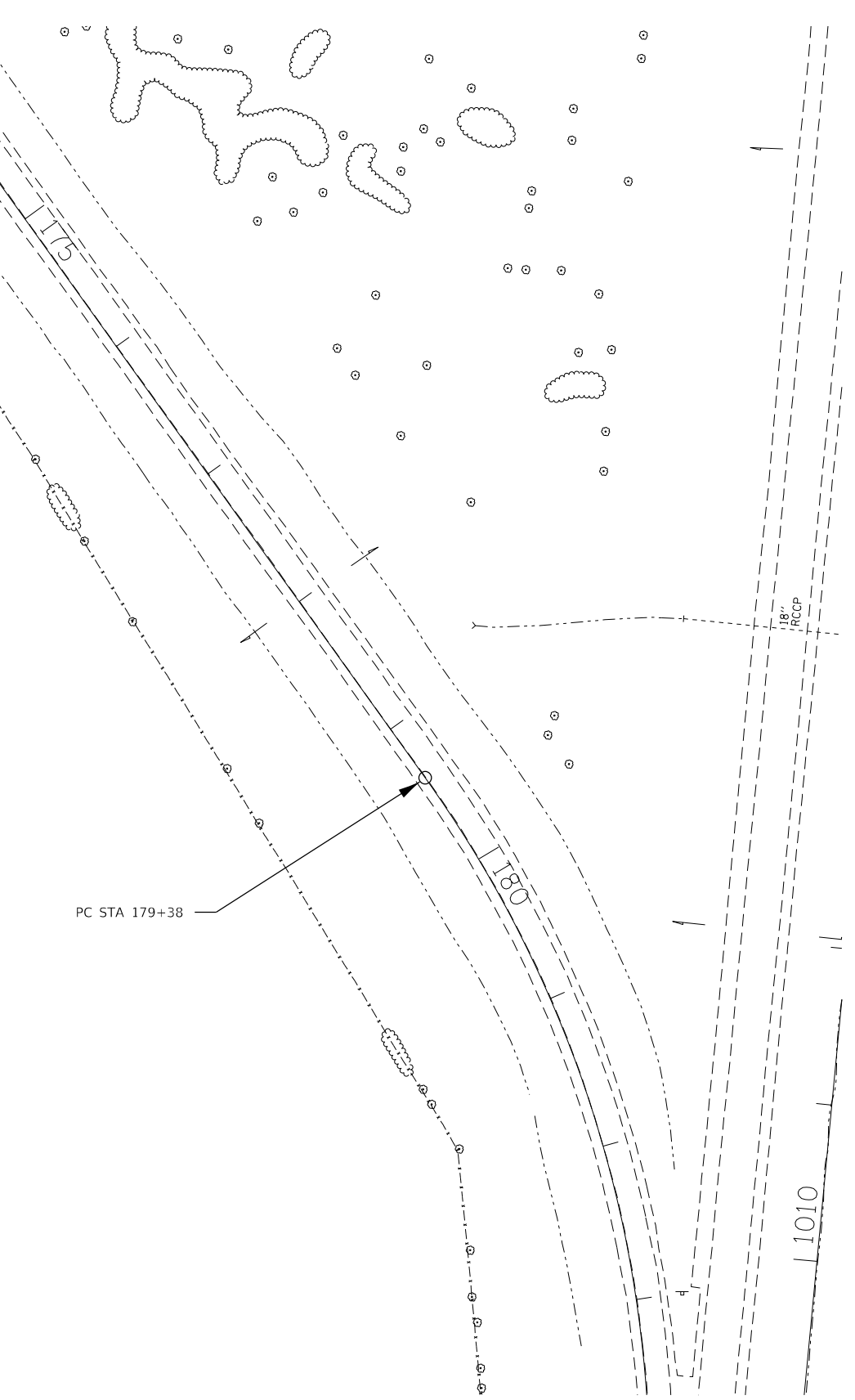
\*D3 SFY WARNING SIGNS 2022-01  
 \*\*BUREAU AND LASALLE

USER NAME = budzynskim	DESIGNED -	REVISED -	<b>STATE OF ILLINOIS DEPARTMENT OF TRANSPORTATION</b>	<b>SCHEDULES</b>			F.A.I. RTE.	SECTION	COUNTY	TOTAL SHEETS	SHEET NO.
PLOT SCALE = 100.0000' / in.	DRAWN -	REVISED -					VAR	*	**	12	4
PLOT DATE = 7/13/2021	CHECKED -	REVISED -		SCALE:      SHEET      OF      SHEETS      STA.      TO STA.			CONTRACT 66M08				
	DATE -	REVISED -					ILLINOIS FED. AID PROJECT				



CONCRETE FOUNDATION, TY A  
 TRAFFIC SIGNAL POST, ALUMINUM, 18 FT  
 PERMANENT RADAR SPEED SIGN  
 RAMP STA 174+38  
 15' RT

PC STA 179+38



MODEL: \\MODELS\MAR\F5  
 FILE: MAR\F5\work\sidejob\budzynskim\0747078\0366M08-shr-draw.dgn

\*D3 SFY WARNING SIGNS 2022-01  
 \*\*BUREAU AND LASALLE

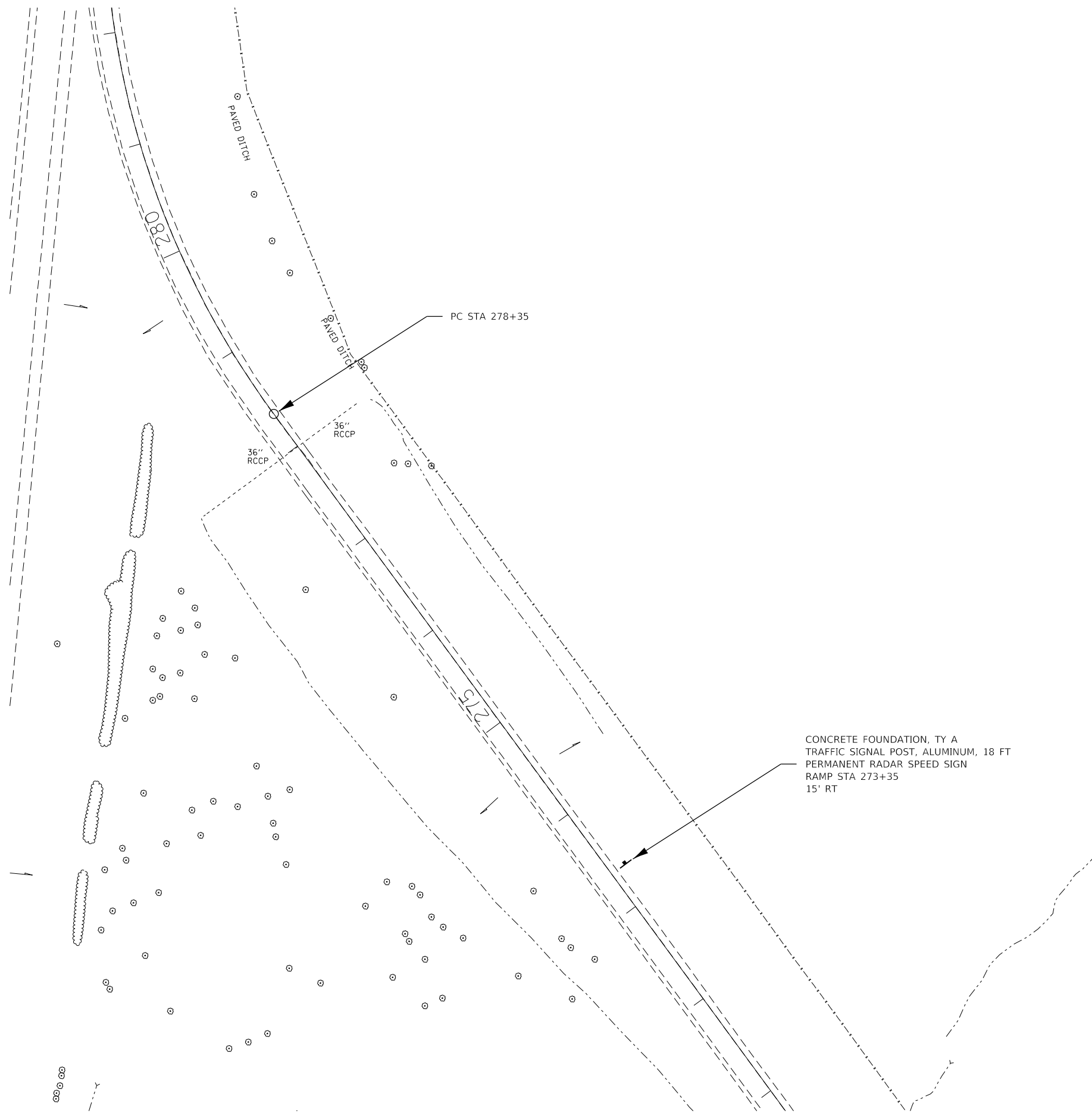
USER NAME = budzynskim	DESIGNED -	REVISED -
	DRAWN -	REVISED -
PLOT SCALE = 100.0000' / in.	CHECKED -	REVISED -
PLOT DATE = 7/13/2021	DATE -	REVISED -

**STATE OF ILLINOIS  
 DEPARTMENT OF TRANSPORTATION**

**I-80 AND I-39 PROPOSED PLAN  
 EASTBOUND TO SOUTHBOUND**

SCALE: SHEET OF SHEETS STA. TO STA.

F.A.I. RTE.	SECTION	COUNTY	TOTAL SHEETS	SHEET NO.
VAR	*	**	12	5
CONTRACT 66M08			ILLINOIS FED. AID PROJECT	



CONCRETE FOUNDATION, TY A  
 TRAFFIC SIGNAL POST, ALUMINUM, 18 FT  
 PERMANENT RADAR SPEED SIGN  
 RAMP STA 273+35  
 15' RT



MODEL: \\MODELS\MARFIS  
 FILE: MARFIS\_CADD\work\sidejob\budzynskim\0747078\0366M08-shr-cadd.dgn

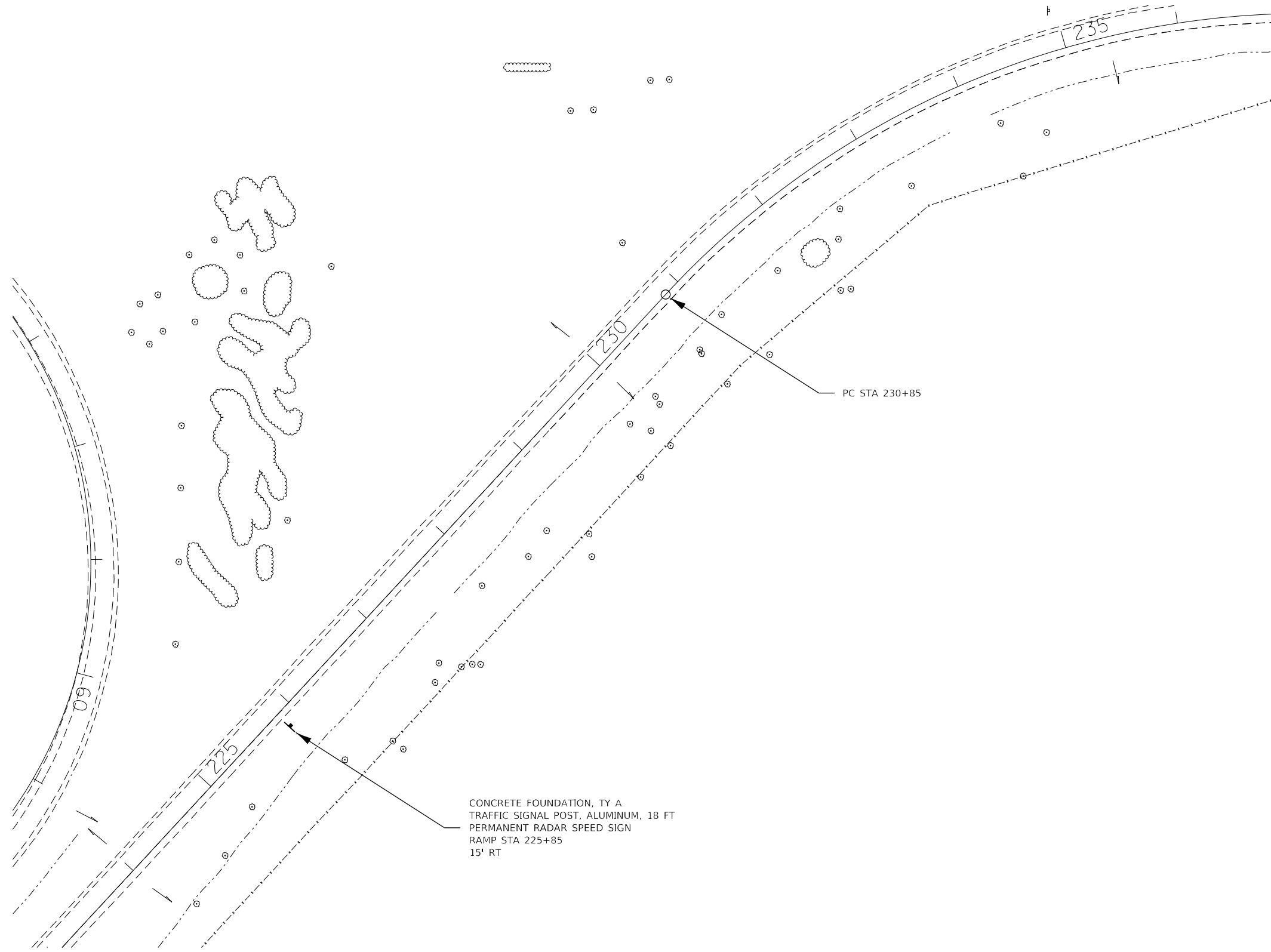
\*D3 SFY WARNING SIGNS 2022-01  
 \*\*BUREAU AND LASALLE

USER NAME = budzynskim	DESIGNED -	REVISED -
	DRAWN -	REVISED -
PLOT SCALE = 100,0000' / in.	CHECKED -	REVISED -
PLOT DATE = 7/13/2021	DATE -	REVISED -

**STATE OF ILLINOIS**  
**DEPARTMENT OF TRANSPORTATION**

<b>I-80 AND I-39 PROPOSED PLAN</b>			
<b>WESTBOUND TO NORTHBOUND</b>			
SCALE:	SHEET	OF SHEETS	STA. TO STA.

F.A.I. RTE.	SECTION	COUNTY	TOTAL SHEETS	SHEET NO.
VAR	*	**	12	6
CONTRACT 66M08			ILLINOIS FED. AID PROJECT	



MODEL: \\MODELS\MJMTS  
FILE: \\MODELS\cadd\work\66m08\66m08-shr-24br.dgn

\*D3 SFY WARNING SIGNS 2022-01  
\*\*BUREAU AND LASALLE

USER NAME = budzynskim	DESIGNED -	REVISED -
	DRAWN -	REVISED -
PLOT SCALE = 100.0000' / in.	CHECKED -	REVISED -
PLOT DATE = 7/13/2021	DATE -	REVISED -

**STATE OF ILLINOIS  
DEPARTMENT OF TRANSPORTATION**

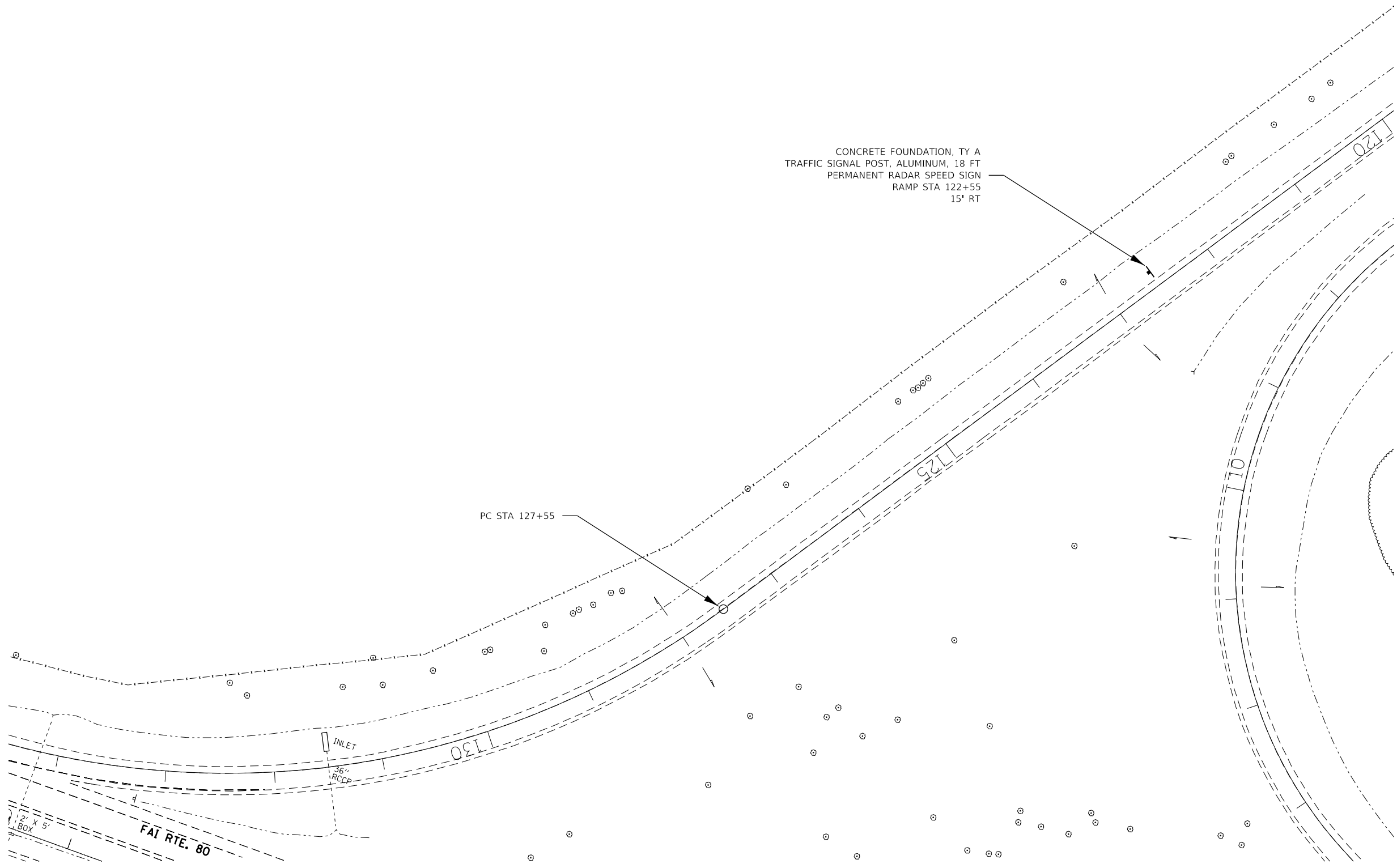
**I-80 AND I-39 PROPOSED PLAN  
NORTHBOUND TO EASTBOUND**

SCALE: SHEET OF SHEETS STA. TO STA.

F.A.I. RTE.	SECTION	COUNTY	TOTAL SHEETS	SHEET NO.
VAR	*	**	12	7
			CONTRACT 66M08	
		ILLINOIS FED. AID PROJECT		



MODEL: \\MODEL\MAR\F5  
 FILE: \\MAR\F5\work\66m08\10747078\66m08-shr-abn.dgn



CONCRETE FOUNDATION, TY A  
 TRAFFIC SIGNAL POST, ALUMINUM, 18 FT  
 PERMANENT RADAR SPEED SIGN  
 RAMP STA 122+55  
 15' RT

PC STA 127+55

INLET

36"  
RCCP

12' x 5'  
 BOX  
 FAI RTE. 80

\*D3 SFY WARNING SIGNS 2022-01  
 \*\*BUREAU AND LASALLE

USER NAME = budzynskim	DESIGNED -	REVISED -
PLOT SCALE = 100.0000' / in.	DRAWN -	REVISED -
PLOT DATE = 7/13/2021	CHECKED -	REVISED -
	DATE -	REVISED -

**STATE OF ILLINOIS**  
**DEPARTMENT OF TRANSPORTATION**

**I-80 AND I-39 PROPOSED PLAN**  
**SOUTHBOUND TO WESTBOUND**

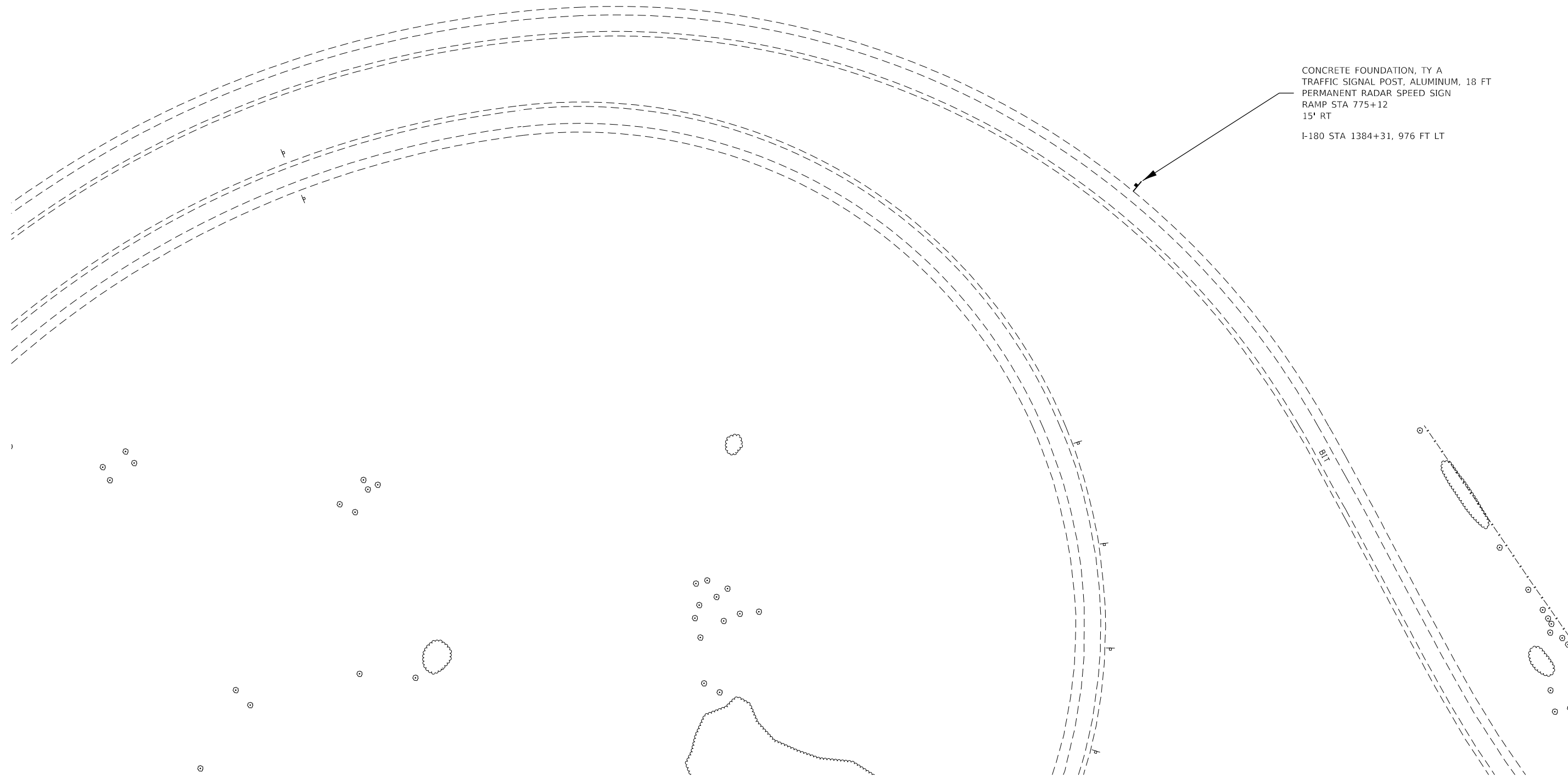
SCALE: SHEET OF SHEETS STA. TO STA.

F.A.I. RTE.	SECTION	COUNTY	TOTAL SHEETS	SHEET NO.
VAR	*	**	12	8
CONTRACT 66M08				
ILLINOIS FED. AID PROJECT				





CONCRETE FOUNDATION, TY A  
 TRAFFIC SIGNAL POST, ALUMINUM, 18 FT  
 PERMANENT RADAR SPEED SIGN  
 RAMP STA 775+12  
 15' RT  
 I-180 STA 1384+31, 976 FT LT



MODEL: \\MODELS\MJH\MS  
 FILE: \\MODELS\MJH\MS\work\66m08\66m08-shr-1384.dgn

\*D3 SFY WARNING SIGNS 2022-01  
 \*\*BUREAU AND LASALLE

USER NAME = budzynskim	DESIGNED -	REVISED -
PLOT SCALE = 100.0000' / in.	DRAWN -	REVISED -
PLOT DATE = 7/13/2021	CHECKED -	REVISED -
	DATE -	REVISED -

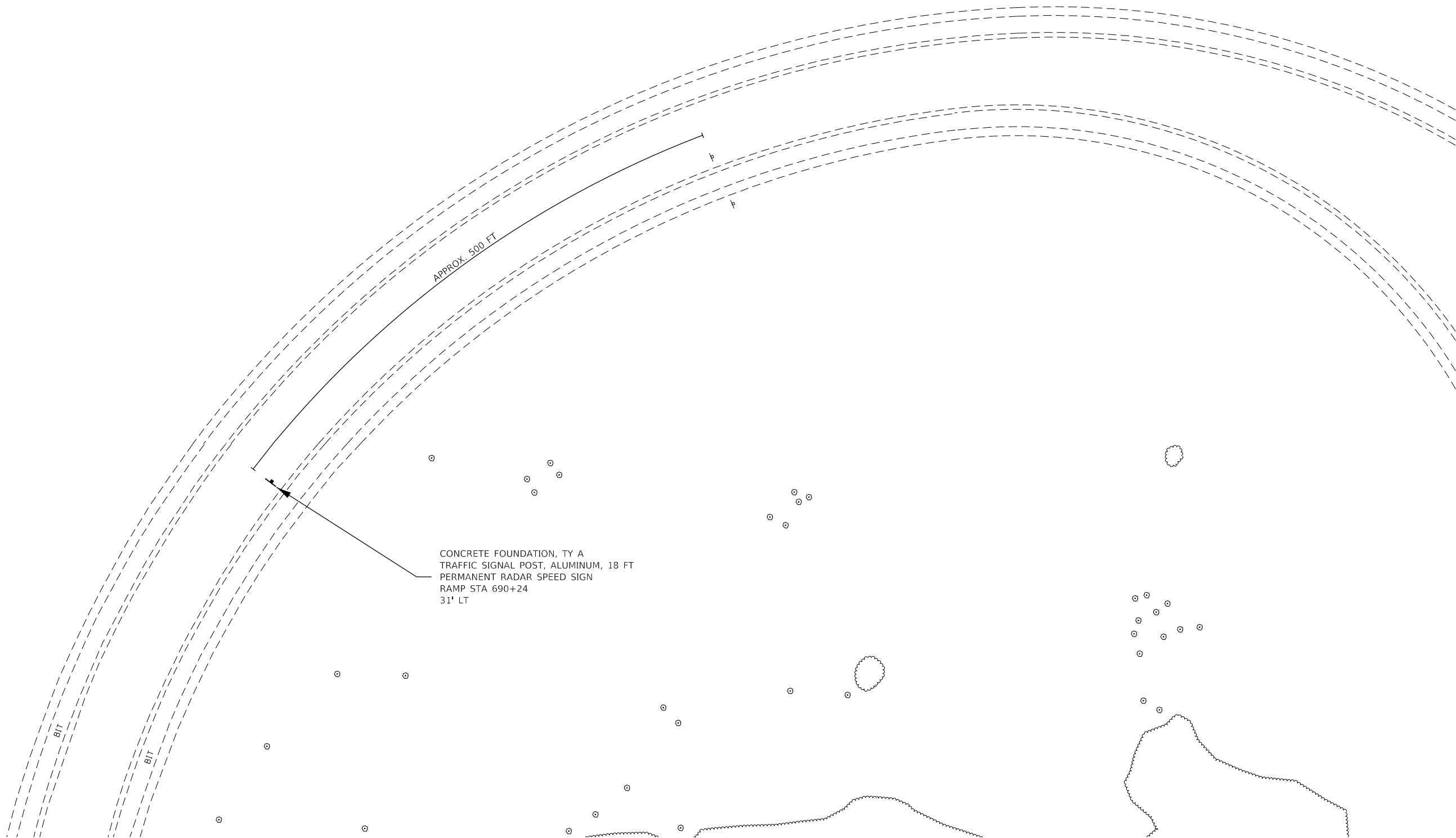
**STATE OF ILLINOIS  
 DEPARTMENT OF TRANSPORTATION**

**I-80 AND I-180 PROPOSED PLAN  
 WESTBOUND TO SOUTHBOUND**

F.A.I. RTE.	SECTION	COUNTY	TOTAL SHEETS	SHEET NO.
VAR	*	**	12	9
CONTRACT 66M08				
ILLINOIS FED. AID PROJECT				

SCALE: SHEET OF SHEETS STA. TO STA.





MODEL: \\MODELS\MAR\F5  
 FILE: \\MAR\F5\work\66m08\66m08-shr-cd-ar.dgn

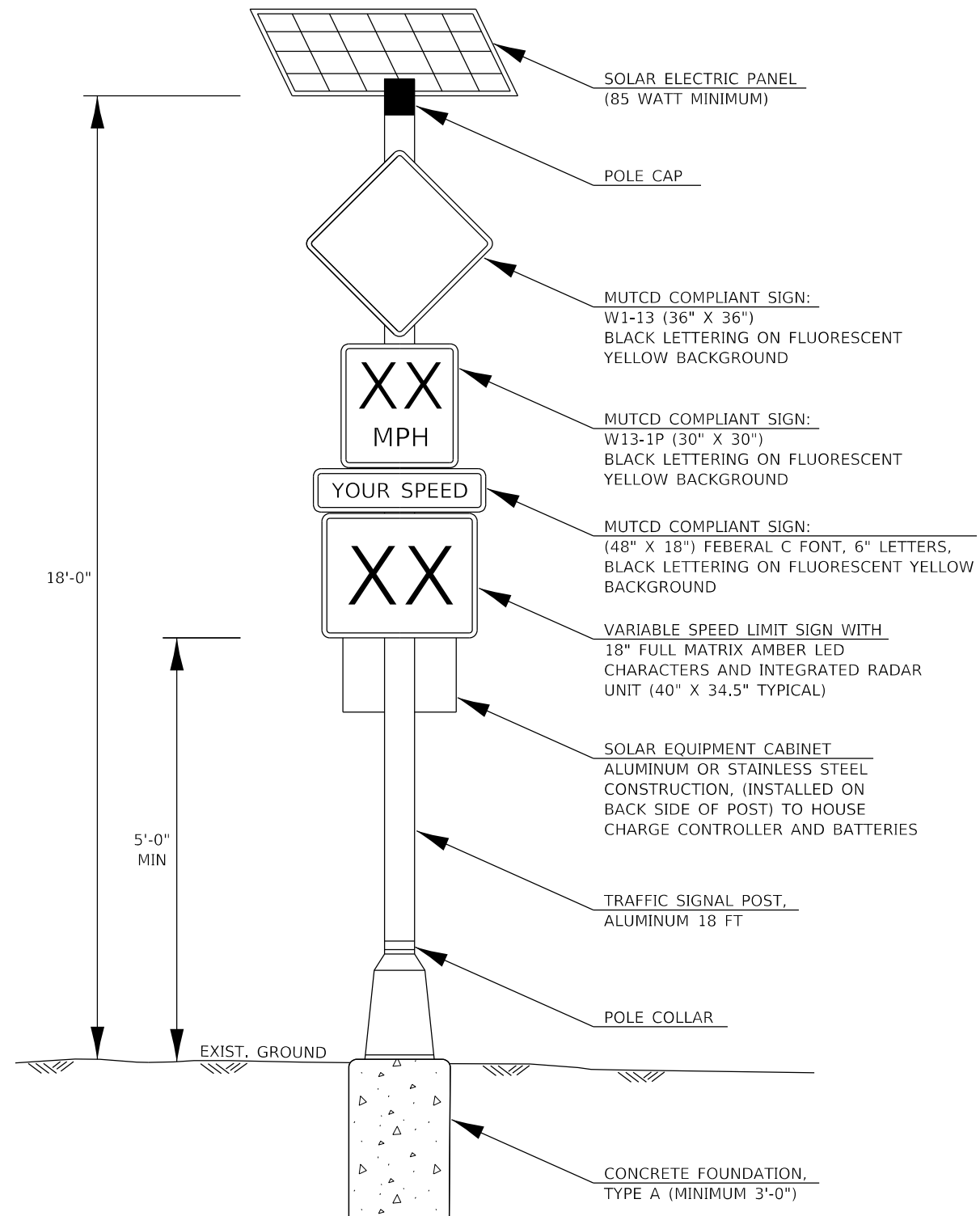
\*D3 SFY WARNING SIGNS 2022-01  
 \*\*BUREAU AND LASALLE

USER NAME = budzynskim	DESIGNED -	REVISED -
	DRAWN -	REVISED -
PLOT SCALE = 100,0000 ' / in.	CHECKED -	REVISED -
PLOT DATE = 7/13/2021	DATE -	REVISED -

**STATE OF ILLINOIS**  
**DEPARTMENT OF TRANSPORTATION**

<b>I-80 AND I-180 PROPOSED PLAN</b>			
<b>NORTHBOUND TO WESTBOUND</b>			
SCALE:	SHEET	OF SHEETS	STA. TO STA.

F.A.I. RTE.	SECTION	COUNTY	TOTAL SHEETS	SHEET NO.
VAR	*	**	12	11
CONTRACT 66M08				
ILLINOIS FED. AID PROJECT				



DESIGN NOTES:

1. THE TRAFFIC SIGNAL POST SPECIFIED SHALL BE INSTALLED ON A CONCRETE FOUNDATION, TYPE A (SEE HIGHWAY STANDARD 878001).
2. TYPE ZZ SHEETING SHALL BE USED ON ALL SIGN PANELS.
3. MOUNTING HARDWARE ON ALL SIGNS SHALL ALLOW FOR VERTICAL ADJUSTMENTS IN THE FIELD.
4. THE CONTRACTOR SHALL BE RESPONSIBLE FOR RESTORING ALL AREAS DISTURBED BY SIGN CONSTRUCTION OPERATIONS. THE COST OF THIS WORK WILL NOT BE PAID FOR SEPARATELY, BUT SHALL BE CONSIDERED INCIDENTAL TO THE RADAR SPEED SIGN.

**PERMANENT RADAR SPEED SIGN DETAIL**  
NOT TO SCALE

MODEL: MODEL.MAINTS  
FILE: MAINTS.dwg  
WORKSPACE: budzynskim\07147078\0366M08-shc-cover.dwg

USER NAME = budzynskim	DESIGNED -	REVISED -
	DRAWN -	REVISED -
PLOT SCALE = 100.0000' / in.	CHECKED -	REVISED -
PLOT DATE = 7/13/2021	DATE -	REVISED -

**STATE OF ILLINOIS  
DEPARTMENT OF TRANSPORTATION**

**DETAILS**

SCALE: SHEET OF SHEETS STA. TO STA.

F.A.I. RTE.	SECTION	COUNTY	TOTAL SHEETS	SHEET NO.
VAR	*	**	12	12
			CONTRACT 66M08	
ILLINOIS FED. AID PROJECT				