

STATE OF ILLINOIS
DEPARTMENT OF TRANSPORTATION

F.A.P. RTE.	SECTION	COUNTY	TOTAL SHEETS	SHEET NO.
76P75	(101,102,103,104,107)MRK-1	GREENE JERSEY ILLINOIS	9	1
CONTRACT NO. 76P75				

FOR INDEX OF SHEETS, SEE SHEET NO. 2

FAP 761 ADT
CALHOUN CO LINE TO
BLUFF ST / 350 E (CITY OF ELDRED)
2022 = 400 (ESTIMATED)
SU = 7.5% MU = 3.3%

FAP 304 ADT
ELDRED RD TO
IL 100 / IL 16 INTERSECTION
2022 = 2300 (ESTIMATED)
SU = 4.0% MU = 4.0%

FAP 761 ADT
BLUFF ST / 350 E (CITY OF ELDRED)
TO US 67 (CITY OF CARROLLTON)
2022 = 1600 (ESTIMATED)
SU = 5.2% MU = 3.9%

FAP 304 ADT
IL 100 / IL 16 INTERSECTION TO
BRUSSELS FERRY ENTRANCE
2022 = 1250 (ESTIMATED)
SU = 2.5% MU = 5.0%

FAP 761 ADT
US 67 (CITY OF CARROLLTON)
TO IL 267
2022 = 1500 (ESTIMATED)
SU = 6.2% MU = 4.8%

FAP 304 ADT
BRUSSELS FERRY ENTRANCE
TO GRAFTON HILLS DR
2022 = 3500 (ESTIMATED)
SU = 2.3% MU = 1.2%

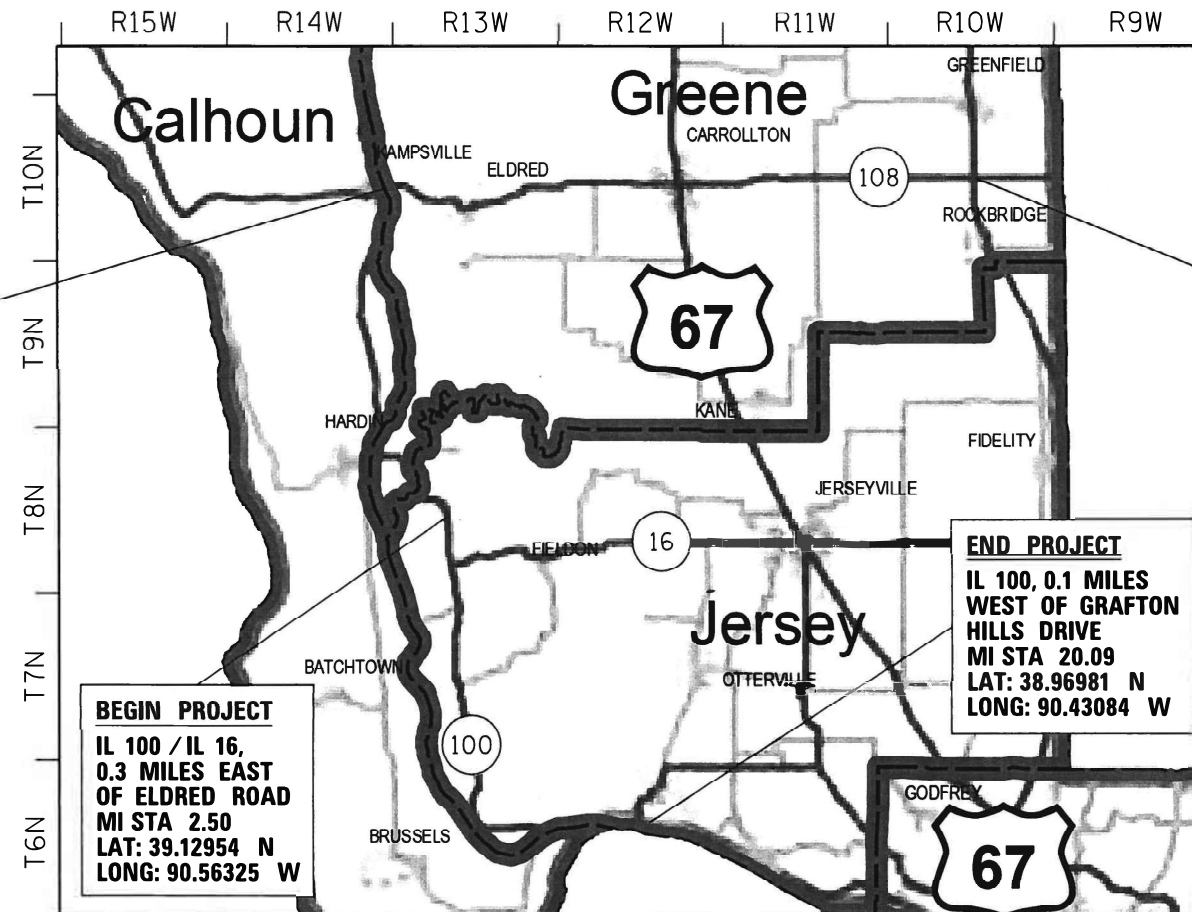
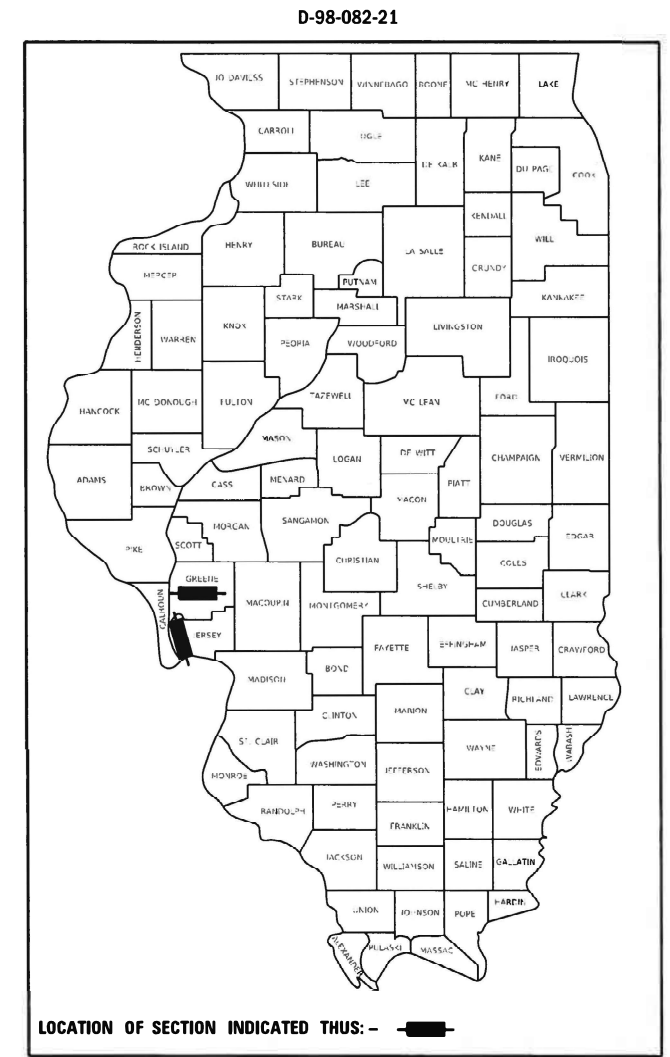
FUNCTIONAL CLASSIFICATION:
MINOR ARTERIAL

FUNCTIONAL CLASSIFICATION:
MINOR ARTERIAL

PROPOSED
HIGHWAY PLANS

FAP 781, FAP 304 (IL 108, IL 100/IL 16)
SECTION (101,102,103,104,107)MRK-1
PROJECT HSIP-9H7P(790)
PAVEMENT MARKINGS
GREENE COUNTY / JERSEY COUNTY

C-98-112-21

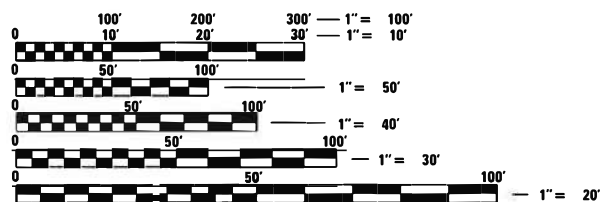


BEGIN PROJECT
IL 108, AT CALHOUN
COUNTY LINE
MI STA 0.00
LAT: 39.30020 N
LONG: 90.60380 W

END PROJECT
IL 108, AT IL 267
MI STA 21.79
LAT: 39.30557 N
LONG: 90.20969 W

END PROJECT
IL 100, 0.1 MILES
WEST OF GRAFTON
HILLS DRIVE
MI STA 20.09
LAT: 38.96981 N
LONG: 90.43084 W

BEGIN PROJECT
IL 100 / IL 16,
0.3 MILES EAST
OF ELDRED ROAD
MI STA 2.50
LAT: 39.12954 N
LONG: 90.56325 W



FULL SIZE PLANS HAVE BEEN PREPARED USING STANDARD
ENGINEERING SCALES. REDUCED SIZED PLANS WILL NOT
CONFORM TO STANDARD SCALES. IN MAKING MEASUREMENTS
ON REDUCED PLANS, THE ABOVE SCALES MAY BE USED.

J.U.L.I.E.
JOINT UTILITY LOCATION INFORMATION FOR EXCAVATORS
1-800-892-0123
OR 811



LOCATION MAP
NOT TO SCALE

GROSS LENGTH = 207,927 FT. = 39.38 MILE
NET LENGTH = 207,927 FT. = 39.38 MILE

STATE OF ILLINOIS
DEPARTMENT OF TRANSPORTATION

SUBMITTED June 17, 2021
Kath Roberts
REGIONAL ENGINEER

August 13, 2021
Scott A. Clark
ENGINEER OF DESIGN AND ENVIRONMENT

August 13, 2021
James J. Dun
DIRECTOR OF HIGHWAYS PROJECT IMPLEMENTATION

PRINTED BY THE AUTHORITY
OF THE STATE OF ILLINOIS

PROJECT ENGINEER: BILLIE OWEN (618) 346-3209
PROJECT MANAGER: BRANDON HUMPHREYS (618) 346-3413

CONTRACT NO. 76P75

INDEX OF SHEETS

1. COVER SHEET
2. INDEX OF SHEETS, HIGHWAY STANDARDS, GENERAL NOTES, & COMMITMENTS
3. SUMMARY OF QUANTITIES
- 4-7. SCHEDULES OF QUANTITIES
8. LOCATION #1 MAP
9. LOCATION #2 MAP

HIGHWAY STANDARDS

000001-08	STANDARD SYMBOLS, ABBREVIATIONS AND PATTERNS
001006	DECIMAL OF AN INCH AND OF A FOOT
701001-02	OFF-RD OPERATIONS, 2L, 2W, MORE THAN 15' AWAY
701301-04	LANE CLOSURE, 2L, 2W, SHORT TIME OPERATIONS
701306-04	LANE CLOSURE, 2L, 2W, SLOW MOVING OPERATIONS DAY ONLY, FOR SPEEDS ≥ 45 MPH
701311-03	LANE CLOSURE 2L, 2W MOVING OPERATIONS - DAY ONLY
701501-06	URBAN LANE CLOSURE, 2L, 2W, UNDIVIDED
701901-08	TRAFFIC CONTROL DEVICES
780001-05	TYPICAL PAVEMENT MARKINGS

GENERAL NOTES

1. UTILITIES KNOWN TO HAVE FACILITIES WITHIN THE PROJECT AREA:
 - AMEREN ILLINOIS
 - AT&T ILLINOIS
 - CITY OF CARROLLTON
 - FRONTIER COMMUNICATIONS
 - GRAFTON COMMUNICATION INC
 - CITY OF GRAFTON
 - GREENE COUNTY RURAL WATER DISTRICT
 - ILLINOIS AMERICAN WATER COMPANY
 - JERSEY COUNTY RURAL WATER COMPANY
 - M.J.M. ELECTRIC COOPERATIVE, INC.
 - NEWWAVE COMMUNICATIONS
 - SPIRE STL PIPELINE LLC
2. AT GRADE RAILROAD CROSSINGS SHALL BE OMITTED. PAVEMENT MARKING IMPROVEMENTS SHALL STOP 25 FEET EITHER SIDE OF THE TRACKS.
3. NO SURVEY WAS PERFORMED FOR THIS PROJECT. THE PLANS WERE CREATED USING MICROFILM AND FIELD MEASUREMENTS.
4. THE PROPOSED PAVEMENT MARKING SHALL MATCH THE LOCATIONS OF EXISTING PAVEMENT MARKING, AS DIRECTED BY THE RESIDENT ENGINEER.
5. NO OVERNIGHT LANE CLOSURES WILL BE ALLOWED.
6. SHORT TERM PAVEMENT MARKING HAS BEEN INCLUDED IN THE PLANS TO ADDRESS ANY TEMPORARY PAVEMENT MARKING REQUIREMENTS.

COMMITMENTS

NONE

MODEL: Default
 FILE NAME: p:\u0000\room\dot\illinois\dot\illinois\dot\pww\dot\Documents\DOT_Offices\District_8\Projects\0876P75\CADD\dot\CAD\References\0876P75-PT-COMMITS.dgn

USER NAME = humphreysb	DESIGNED -	REVISED -
	DRAWN -	REVISED -
PLOT SCALE = 40,0000 * / in.	CHECKED -	REVISED -
PLOT DATE = 6/17/2021	DATE -	REVISED -

**STATE OF ILLINOIS
DEPARTMENT OF TRANSPORTATION**

**INDEX OF SHEETS, HIGHWAY STANDARDS,
GENERAL NOTES, AND COMMITMENTS**

SCALE: SHEET 1 OF 1 SHEETS STA. TO STA.

F.A.P. RTE.	SECTION	COUNTY	TOTAL SHEETS	SHEET NO.
761/304	(101,102,103,104,107)MRK-1	GREENE, JERSEY	9	2
CONTRACT NO. 76P75				
ILLINOIS FED. AID PROJECT				

MODEL: Default
 FILE NAME: p:\pub\mroom.dwt\illinois.gov\PWIDOT\Documents\DOT_Offices\District 8\Projects\0876775\CADD\data\CAD\Faces\0876775-ph-500.dgn

CODE NO.	ITEM	UNIT	TOTAL QUANTITY	CONSTRUCTION CODE	
				90% FEDERAL 10% STATE	90% FEDERAL 10% STATE
				PAVEMENT MARKING 0021	PAVEMENT MARKING 0021
				RURAL GREENE COUNTY	RURAL JERSEY COUNTY
67100100	MOBILIZATION	L SUM	1	0.5	0.5
70100460	TRAFFIC CONTROL AND PROTECTION, STANDARD 701306	L SUM	1	0.5	0.5
70102620	TRAFFIC CONTROL AND PROTECTION, STANDARD 701501	L SUM	1	0.5	0.5
70300100	SHORT TERM PAVEMENT MARKING	FOOT	20492	11316	9176
70300150	SHORT TERM PAVEMENT MARKING REMOVAL	SQ FT	6893	3805	3088
78000100	THERMOPLASTIC PAVEMENT MARKING - LETTERS AND SYMBOLS	SQ FT	187.9	125.5	62.4
78000300	THERMOPLASTIC PAVEMENT MARKING - LINE 5"	FOOT	106231	36711	69520
78000400	THERMOPLASTIC PAVEMENT MARKING - LINE 6"	FOOT	511745	285845	225900
78000500	THERMOPLASTIC PAVEMENT MARKING - LINE 8"	FOOT	410	410	0
78000600	THERMOPLASTIC PAVEMENT MARKING - LINE 12"	FOOT	1902	160	1742
78000650	THERMOPLASTIC PAVEMENT MARKING - LINE 24"	FOOT	208	132	76
78009006	MODIFIED URETHANE PAVEMENT MARKING - LINE 6"	FOOT	1425	1425	0
78300202	PAVEMENT MARKING REMOVAL - WATER BLASTING	SQ FT	361966	194959	167007

USER NAME = humphreysb	DESIGNED -	REVISED -
	DRAWN -	REVISED -
PLOT SCALE = 40,0000 * / in.	CHECKED -	REVISED -
PLOT DATE = 6/17/2021	DATE -	REVISED -

**STATE OF ILLINOIS
DEPARTMENT OF TRANSPORTATION**

SUMMARY OF QUANTITIES

SCALE: SHEET 1 OF 1 SHEETS STA. TO STA.

F.A.P. RTE.	SECTION	COUNTY	TOTAL SHEETS	SHEET NO.
761/304	(101,102,103,104,107)MRK-1	GREENE, JERSEY	9	3
CONTRACT NO. 76P75				
ILLINOIS FED. AID PROJECT				

PAVEMENT MARKINGS SCHEDULE - LOCATION #1

MILE STATION	TO	MILE STATION	LENGTH FOOT	THERMOPLASTIC PAVEMENT MARKINGS											MODIFIED URETHANE PAVEMENT MARKINGS			SHORT TERM PAVEMENT MARKINGS		SHORT TERM PAVEMENT MARKING REMOVAL SQ FT	PAVEMENT MARKING REMOVAL - WATER BLASTING SQ FT	NOTES
				5- INCH			6- INCH			8- INCH	12- INCH	24- INCH	LETTERS & SYMBOLS SQ FT	6- INCH			WHITE FOOT	YELLOW FOOT				
				SOLID LINE	SKIP-DASH	SKIP-DASH	SOLID LINE	SKIP-DASH	SOLID LINE	SOLID LINE	SOLID LINE	SOLID LINE		SOLID LINE	SOLID LINE	SOLID LINE			SOLID LINE			
				WHITE FOOT	YELLOW FOOT	YELLOW FOOT	WHITE FOOT	YELLOW FOOT	YELLOW FOOT	WHITE FOOT	WHITE FOOT	WHITE FOOT		WHITE FOOT	YELLOW FOOT	YELLOW FOOT			YELLOW FOOT			
IL 108																						
0.00	TO	0.06	320				640	640										32	11	664	CALHOUN COUNTY LINE	
0.06	TO	0.22	825				1650	825	210									76	26	1658		
0.22	TO	0.35	695				1390		180									64	22	1055		
0.35	TO	0.59	1280				2485	1280	320									120	40	2523		
0.59	TO	0.65	305				610	610										28	10	610		
0.65	TO	0.86	1115				2230	1115	280									104	35	2233		
0.86	TO	1.77	4820				9570		1210									440	147	7205		
1.77	TO	1.98	1120				2240	1120	280									104	35	2240		
1.98	TO	2.01	110				220	220										12	4	220		
2.01	TO	2.03	145															16	6	290	SN 031-0038	
2.03	TO	2.25	1130				2260	1130	290				290	290				104	35	2275		
2.25	TO	2.53	1480				2960		370									136	46	2220		
2.53	TO	3.01	2550	5020		640												232	78	3159		
3.01	TO	3.13	640	1280	640	160												60	20	1067		
3.13	TO	3.90	4070	7970	8140													372	124	6713	BLUFF STREET/350 E	
3.90	TO	4.79	4680				9255	9360										428	143	9308		
4.79	TO	4.97	980				1960	980	250									92	31	1970		
4.97	TO	5.00	120				240	240										12	4	240		
5.00	TO	5.18	960				1920	960	240									88	30	1920		
5.18	TO	5.54	1920				3840	3840										176	59	3840		
5.54	TO	5.69	780				1560	780	200									72	24	1570		
5.69	TO	5.70	75				150	150										8	3	150		
5.70	TO	5.80	515				1030	515	130									48	16	1033		
5.80	TO	5.96	835				1670		210									76	26	1255		
5.96	TO	6.08	630				1260	630	160									60	20	1265		
6.08	TO	6.57	2585				5170		650									236	79	3885		
6.57	TO	6.78	1110				2180	1110	280									104	35	2205		
6.78	TO	7.09	1655				3220	3310										152	51	3265		
7.09	TO	7.18	480				920	480	120									44	15	940		
7.18	TO	7.21	140				280	280										16	6	280		
7.21	TO	7.40	980				1960	980	250									92	31	1970		
7.40	TO	7.53	710				1420	1420										68	23	1420		
7.53	TO	7.66	695				1335	695	180									64	22	1375		
7.66	TO	8.64	5145				10225		1290									468	156	7693		
8.64	TO	8.79	795				1590	795	200									76	26	1593		
8.79	TO	8.84	305				610		80									28	10	465		
8.84	TO	8.96	595				1190	595	150									56	19	1193		
8.96	TO	9.00	240				480	480										24	8	480		
9.00	TO	9.06	310				535	310	80									32	11	583		
9.06	TO	9.17	565				1045		150									52	18	823		
9.17	TO	9.39	1160				2320	1160	290									108	36	2320		
9.39	TO	10.56	6180				12360		1550									564	188	9280		
10.56	TO	11.03	2470	4580		620												160	228	130	2942	
11.03	TO	11.13	538	1335	922					410	160	48	3.1					248	112	120	1473	6TH STREET
11.13	TO	11.48	1845	650		470												120	168	96	1055	US 67/5TH STREET
11.48	TO	11.56	455	910	455	120						24	61.2					32	44	26	878	
11.56	TO	11.60	190	150	380							24	61.2					40	20	20	269	RAILROAD TRACKS
11.60	TO	11.69	485	940	485	130						24	61.2					16	48	22	920	
11.69	TO	11.75	317	634		80												32	11	398		
SUBTOTALS				23469	11022	2220	95980	36010	9600	410	160	132	125.5	290	290	0	616	5796	2154	104388		

MODEL: Default
 FILE NAME: \\paulamronon.dor.illinois.gov\PIW\DOT\Documents\DOT_Offices\Distric_9\Projects\0876P75_CADD\DATA\CADPROCESS\0876P75-PH-CEN\01.dwg

USER NAME = humphreysb	DESIGNED -	REVISED -
PLOT SCALE = 40,0000 */ in.	DRAWN -	REVISED -
PLOT DATE = 6/17/2021	CHECKED -	REVISED -
	DATE -	REVISED -

**STATE OF ILLINOIS
DEPARTMENT OF TRANSPORTATION**

SCHEDULES OF QUANTITIES

SCALE:	SHEET 1	OF 4	SHEETS	STA.	TO STA.
--------	---------	------	--------	------	---------

F.A.P. RTE.	SECTION	COUNTY	TOTAL SHEETS	SHEET NO.
761304	(101,102,103,104,107)MRK-1	GREENE, JERSEY	9	4
CONTRACT NO. 76P75				
ILLINOIS FED. AID PROJECT				

PAVEMENT MARKINGS SCHEDULE - LOCATION #1, CONTINUED

MILE STATION	TO	MILE STATION	LENGTH FOOT	THERMOPLASTIC PAVEMENT MARKINGS										MODIFIED URETHANE PAVEMENT MARKINGS			SHORT TERM PAVEMENT MARKINGS		SHORT TERM PAVEMENT MARKING REMOVAL	PAVEMENT MARKING REMOVAL - WATER BLASTING	NOTES																	
				5 - INCH			6 - INCH			8 - INCH	12 - INCH	24 - INCH	LETTERS & SYMBOLS SQ FT	6 - INCH			WHITE	YELLOW	SQ FT	SO FT																		
				SOLID LINE	SKIP - DASH	YELLOW	SOLID LINE	SKIP - DASH	YELLOW	SOLID LINE	SOLID LINE	SOLID LINE		SOLID LINE	SKIP - DASH	WHITE						YELLOW	YELLOW															
				WHITE	YELLOW	FOOT	WHITE	YELLOW	FOOT	YELLOW	WHITE	WHITE	WHITE	WHITE	FOOT	FOOT	FOOT	FOOT	FOOT	SO FT		SO FT																
IL 108																																						
11.75	TO	12.74	5205				10355		1310																									476	159	7798		
12.74	TO	12.85	590				1180	590	150																								56	19	1185			
12.85	TO	12.99	730				1460		190																							68	23	1110				
12.99	TO	13.10	580				1160	580	150																							56	19	1170				
13.10	TO	13.16	310				620		80																							32	11	470				
13.16	TO	13.36	1080				2160	1080	270																							100	34	2160				
13.36	TO	13.37	50				100		20																							8	3	90				
13.37	TO	13.58	1095				2190	1095	280																							100	34	2203				
13.58	TO	13.72	765				1530		200																							72	24	1165				
13.72	TO	13.95	1195				2390	1195	300																							112	38	2393				
13.95	TO	13.96	55				110		20																							8	3	95				
13.96	TO	14.15	995				1990	995	250																							92	31	1993				
14.15	TO	14.22	385				770		100																							36	12	585				
14.22	TO	14.38	845				1690	845	220																							80	27	1708				
14.38	TO	14.43	280				560		70																							28	10	420				
14.43	TO	14.59	830				1660	830	210																							76	26	1665				
14.59	TO	14.67	440				880		110																							40	14	660				
14.67	TO	14.81	730				1385	730	190																							68	23	1438				
14.81	TO	14.89	405				810		110																							40	14	625				
14.89	TO	14.97	420				840	420	110																							40	14	850				
14.97	TO	15.02	275				550	550																								28	10	550				
15.02	TO	15.16	740				1480	740	190																							68	23	1490				
15.16	TO	15.19	145				290		40																							16	6	225				
15.19	TO	15.58	2045				3995	2045	520																							188	63	4060				
15.58	TO	15.77	1045				2090	2090																								96	32	2090				
15.77	TO	15.99	1150				2300	1150	290																							108	36	2305				
15.99	TO	17.33	7055				13955		1770																							644	215	10518				
17.33	TO	17.48	810				1620	810	210																							76	26	1635				
17.48	TO	20.06	13615				26850		3410																							1240	414	20245				
20.06	TO	20.09	135											270			40															16	6	215	SN 031-0045			
20.09	TO	20.22	720				1440		180																							68	23	1080				
20.22	TO	20.44	1155				2310	1155	290																							108	36	2313				
20.44	TO	20.93	2595				5190	5190																								236	79	5190				
20.93	TO	21.12	1005				2010	1005	260																							92	31	2028				
21.12	TO	21.14	95				190	190																								12	4	190				
21.14	TO	21.14	15											30		30																4	2	30	SN 031-0042			
21.14	TO	21.17	145											290		145		40													16	6	298	SN 031-0042				
21.17	TO	21.34	875				1750	875	220																							80	27	1753				
21.34	TO	21.61	1450				2900	2900																								132	44	2900				
21.61	TO	21.79	925				1670	835	210																							88	30	1673	IL 267			
SUBTOTALS, THIS PAGE							0	0	0	104430	27895	11930		0	0	0	0.0	590	175	80		0	4904	1651	90571													
SUBTOTALS, PREVIOUS PAGE							23469	11022	2220	95980	36010	9500		410	160	132	125.5	290	290	0		616	5796	2154	104388													
TOTALS							36711			285845			410	160	132	125.5	1425			11316		3805	194959															

MODEL: Default
FILE NAME: \\publunroom-dot-illinois.gov\PWDOT\Documents\DOT_Offices\Director\Projects\0675\CaddData\CAD\Process\0675\0675-PT-Centerville.dwg

USER NAME = humpreysb	DESIGNED -	REVISED -
DRAWN -	REVISED -	
PLOT SCALE = 40,0000' = 1"	CHECKED -	REVISED -
PLOT DATE = 6/17/2021	DATE -	REVISED -

STATE OF ILLINOIS
DEPARTMENT OF TRANSPORTATION

SCHEDULES OF QUANTITIES			
SCALE:	SHEET 2	OF 4	SHEETS
STA.			TO STA.

F.A.P. RTE.	SECTION	COUNTY	TOTAL SHEETS	SHEET NO.
761/304	(101,102,103,104,107)MRK-1	GREENE, JERSEY	9	5
			CONTRACT NO. 76P75	
ILLINOIS			FED. AID PROJECT	

PAVEMENT MARKINGS SCHEDULE - LOCATION #2

MILE STATION	TO	MILE STATION	LENGTH FOOT	THERMOPLASTIC PAVEMENT MARKINGS									SHORT TERM PAVEMENT MARKINGS		SHORT TERM PAVEMENT MARKING REMOVAL	PAVEMENT MARKING REMOVAL - WATER BLASTING	NOTES		
				5 - INCH			6 - INCH			12 - INCH		24 - INCH	LETTERS & SYMBOLS	WHITE	YELLOW	SQ FT		SQ FT	SQ FT
				SOLID LINE	SKIP - DASH	SKIP - DASH	SOLID LINE	SKIP - DASH	SOLID LINE	SOLID LINE	WHITE	YELLOW							
				WHITE	YELLOW	YELLOW	WHITE	YELLOW	YELLOW	WHITE	YELLOW	WHITE	WHITE	WHITE	YELLOW	FOOT		FOOT	FOOT
IL 100/IL 16																			
2.50	TO	2.62	640				1280		160					60	60	40	960	0.3 MILES EAST OF FIDRFD ROAD	
2.62	TO	2.82	1060				2120	1060	270					100	34		2130		
2.82	TO	2.84	100				200		30					12	4		160		
2.84	TO	2.98	715				1430	715	180					68	23		1433		
2.98	TO	3.08	540				1080		140					52	18		820		
3.08	TO	3.51	2300				4600	2300	580					212	71		4610		
3.51	TO	3.81	1560				3120		390					144	48		2340		
3.81	TO	3.94	675				1350	675	170					64	22		1353		
3.94	TO	4.06	670				1340	1340						64	22		1340		
4.06	TO	4.15	460				880	1770			185			44	15		1510	IL 100/IL 16	
IL 16																			
0.00	TO	0.02	130				235	210				12		12	4		278	EAST APPROACH OF IL 100/IL 16	
IL 100																			
4.15	TO	4.17	115				465	240				32		12	4		417	IL 100/IL 16	
4.17	TO	4.28	565				1130	1130						52	18		1130		
4.28	TO	4.48	1080				2160	1080	270					100	34		2160		
4.48	TO	5.36	4630				9260		1160					424	142		6950		
5.36	TO	5.58	1130				2260	1130	290					104	35		2275		
5.58	TO	5.83	1360				2205	2720						124	42		2463		
5.83	TO	6.03	1055				2110	1055	270					96	32		2123		
6.03	TO	6.63	3155				6310		790					288	96		4735		
6.63	TO	6.81	970				1940	970	250					92	31		1955		
6.81	TO	7.51	3690				7380	7380						336	112		7380		
7.51	TO	7.73	1125				2250	1125	290					104	35		2268		
7.73	TO	8.01	1495				2990		380					136	46		2255		
8.01	TO	8.22	1090				2180	1090	280					100	34		2195		
8.22	TO	9.05	4425				8650	8850						404	135		8750		
9.05	TO	9.19	735				1470	735	190					68	23		1483		
9.19	TO	9.27	410				820	820						40	14		820		
9.27	TO	9.42	780				1560	780	200					72	24		1570		
9.42	TO	9.43	55				110		20					8	3		95		
9.43	TO	9.64	1115				2230	1115	280					104	35		2233		
9.64	TO	9.95	1615				3230	3230						148	50		3230		
9.95	TO	10.16	1140				2280	1140	290					104	35		2290		
10.16	TO	10.28	620				1240		160					60	20		940		
10.28	TO	10.48	1080				2160	1080	270					100	34		2160		
10.48	TO	10.81	1710				3420	3420						156	52		3420		
10.81	TO	11.04	1205				2410	1205	310					112	38		2428		
11.04	TO	11.15	610				1220		160					56	19		930		
11.15	TO	11.34	1015				2030	1015	260					96	32		2043		
11.34	TO	11.97	3305				6610	6610						304	102		6610		
11.97	TO	12.18	1130				2260	1130	290					104	35		2275		
12.18	TO	12.45	1415				2745		360					132	44		2093		
12.45	TO	12.65	1040				2080	1040	260					96	32		2080		
12.65	TO	12.66	75				150		20					8	3		115		
12.66	TO	12.84	955				1910	955	240					88	30		1913		
12.84	TO	13.12	1470				2940	2940						136	46		2940		
13.12	TO	13.33	1115				2230	1115	280					104	35		2233		
13.33	TO	13.36	120				240		30					12	4		180		
13.36	TO	13.55	1020				2040	1020	260					96	32		2050		
SUBTOTALS				0	0	0	116310	64190	9780	0	185	44	31.2	60	5408	1839	110121		

MODEL: Default
FILE NAME: p:\planroom\dot\illinois.gov\RWIDOT\Documents\DOT_Offices\District 8\Projects\0876P75_CADD\data\CADProcess\0876P75-phs-cen\cb.dwg

USER NAME = humphreysb	DESIGNED -	REVISED -	STATE OF ILLINOIS DEPARTMENT OF TRANSPORTATION	SCHEDULES OF QUANTITIES				F.A.P. RTE. SECTION		COUNTY	TOTAL SHEETS	SHEET NO.
DESIGNED - DRAWN -	REVISED -	761/304						(101,102,103,104,107)MRK-1	GREENE, JERSEY	9	6	
PLOT SCALE = 40,0000 */ in.	CHECKED -	REVISED -	SCALE:		SHEET 3	OF 4	SHEETS	STA.	TO STA.		CONTRACT NO. 76P75	
PLOT DATE = 6/17/2021	DATE -	REVISED -									ILLINOIS FED. AID PROJECT	

PAVEMENT MARKINGS SCHEDULE - LOCATION #2, CONTINUED

MILE STATION	TO	MILE STATION	LENGTH	THERMOPLASTIC PAVEMENT MARKINGS										SHORT TERM PAVEMENT MARKINGS		SHORT TERM PAVEMENT MARKING REMOVAL	PAVEMENT MARKING REMOVAL - WATER BLASTING	NOTES	
				5 - INCH			6 - INCH			12 - INCH		24 - INCH	LETTERS & SYMBOLS	WHITE	YELLOW				
				SOLID LINE	SKIP-DASH		SOLID LINE	SKIP-DASH		SOLID LINE	SOLID LINE								
				WHITE	YELLOW	YELLOW	WHITE	YELLOW	YELLOW	WHITE	YELLOW	WHITE							WHITE
FOOT	FOOT	FOOT	FOOT	FOOT	FOOT	FOOT	FOOT	FOOT	SQ FT	FOOT	FOOT	SQ FT	SQ FT						
IL 100																			
13.55	TO	13.57	120	240		30										12	4	150	SPEED LIMIT < 50 MPH
13.57	TO	13.70	690	1380	1380											64	22	1150	
13.70	TO	13.85	775	1310	775	200				50						72	24	1253	
13.85	TO	13.94	465	930		120										44	15	588	
13.94	TO	14.07	685	1370	685	180										64	22	1157	
14.07	TO	14.12	260	520	520											24	8	434	
14.12	TO	14.28	860	1720	860	220										80	27	1442	
14.28	TO	14.29	35	70		10										4	2	46	
14.29	TO	14.40	610	1220	610	160										56	19	1030	
14.40	TO	14.44	180				360	180	50							20	7	370	SPEED LIMIT ≥ 50 MPH
14.44	TO	14.50	320				640		80							32	11	480	
14.50	TO	14.64	780				1560	780	200							72	24	1570	
14.64	TO	14.69	245				490		70							24	8	385	
14.69	TO	14.85	855				1710	855	220							80	27	1723	
14.85	TO	14.90	250				500		70							24	8	390	
14.90	TO	15.01	570				1140	570	150							52	18	1155	
15.01	TO	15.07	345				690	690								32	11	690	
15.07	TO	15.22	780				1560	780	200							72	24	1570	
15.22	TO	15.54	1660				3320	3320								152	51	3320	
15.54	TO	15.56	115				230	115	30							12	4	233	
15.56	TO	15.56	35				70		10							4	2	55	
15.56	TO	15.76	1035				2070	1035	260							96	32	2073	
15.76	TO	15.97	1115				2230		280							104	35	1675	
15.97	TO	16.12	765				1530	765	200							72	24	1548	
16.12	TO	16.43	1685				3240	3370								156	52	3305	
16.43	TO	16.53	510	890	1020											48	16	796	SPEED LIMIT < 50 MPH
16.53	TO	16.67	725	1235	725	190										68	23	1134	
16.67	TO	16.70	140	280		40										16	6	184	
16.70	TO	16.87	930	1730	930	240										88	30	1509	
16.87	TO	17.57	3715	7325	7430											340	114	6148	
17.57	TO	17.79	1150	2300	1150	290										108	36	1921	
17.79	TO	17.91	615	1230		160										56	19	780	
17.91	TO	18.10	995	1990	995	250										92	31	1661	
18.10	TO	18.13	180	360		50										20	7	234	
18.13	TO	18.28	800	1600	800	200										76	26	1334	
18.28	TO	18.53	1290	2580		330				50						120	40	1675	
18.53	TO	19.79	6640	12305		1660				144	59					176	604	260	8097
19.79	TO	19.82	180	330	360					72	30					32	40	24	390
19.82	TO	19.85	150	380	280					140	117	17		31.2		36	16	18	598
19.85	TO	19.86	65							298		15				8	3		328
19.86	TO	19.89	185	375	740						44					36	40	26	509
19.89	TO	19.92	110	220	220											20	12	11	184
19.92	TO	20.10	960	1580		240				553						144	88	78	1612
SUBTOTALS, THIS PAGE				45470	19480	4570	21340	12460	1820	1307	250	32	31.2	444	3264	1249	56886		
SUBTOTALS, PREVIOUS PAGE				0	0	0	116310	64190	9780	0	185	44	31.2	60	5408	1839	110121		
TOTALS				69520			225900			1742		76	62.4	9176		3088	167007		

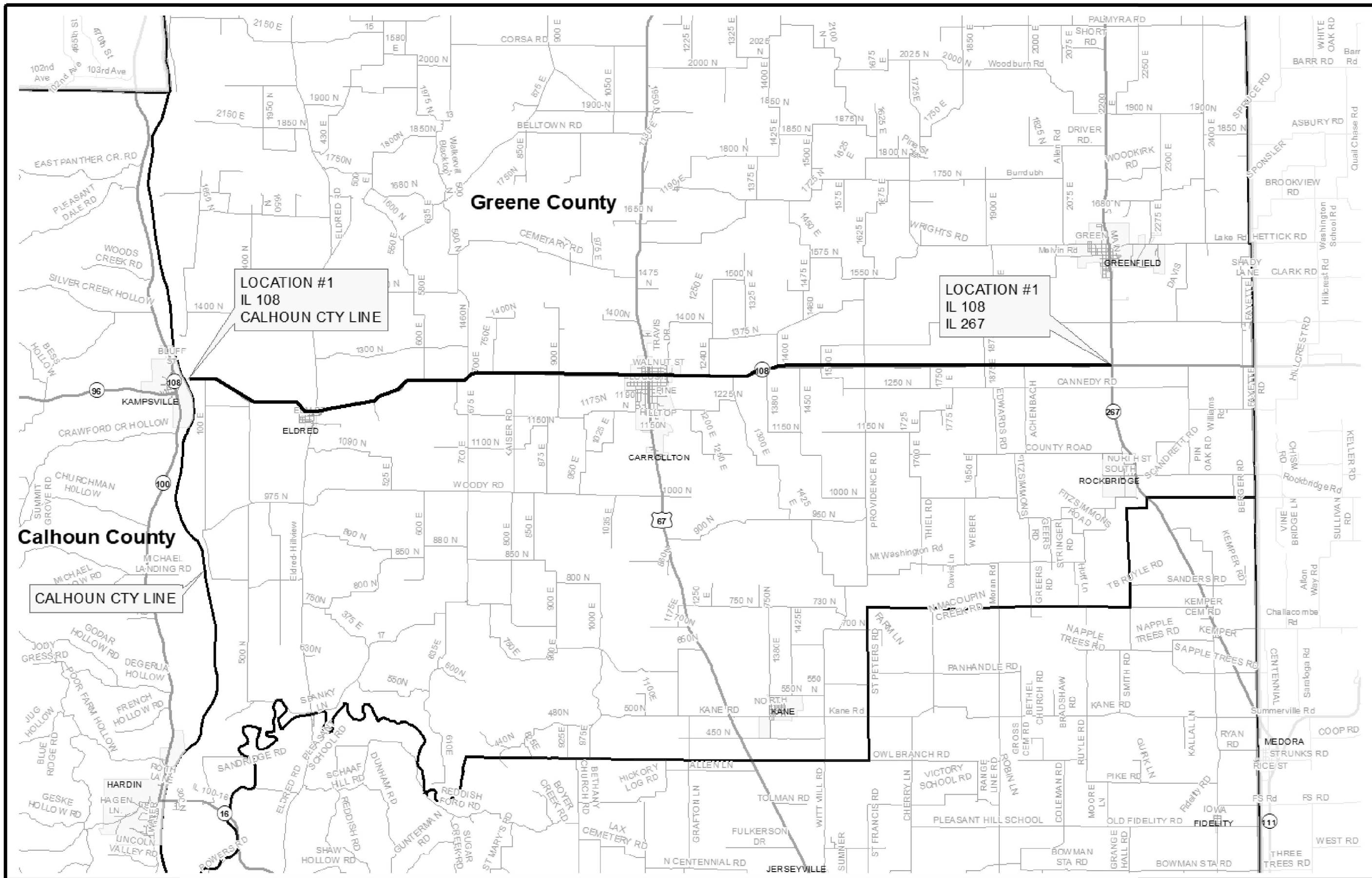
MODEL: Default
 FILE NAME: p:\planning\magnon_eat\illinois_gov\PROJECTS\DOT Documents\DOT - Office\Distric 8\Projects\0676P75\CADD\DATA\CAD\Faces\0676P75-ph-ctrl.tbl.dwg

USER NAME = humphreysb	DESIGNED -	REVISED -
PLOT SCALE = 40,0000 */ in.	DRAWN -	REVISED -
PLOT DATE = 6/17/2021	CHECKED -	REVISED -
	DATE -	REVISED -

**STATE OF ILLINOIS
DEPARTMENT OF TRANSPORTATION**

SCHEDULES OF QUANTITIES				
SCALE:	SHEET 4	OF 4	SHEETS	STA. TO STA.

F.A.P. RTE.	SECTION	COUNTY	TOTAL SHEETS	SHEET NO.
761/304	(101,102,103,104,107)MRK-1	GREENE, JERSEY	9	7
CONTRACT NO. 76P75				
ILLINOIS FED. AID PROJECT				



MODEL: Default
 FILE NAME: \\planning\planning\GIS\Projects\7675\Cadd\7675\CaddData\CaddProject\0676975.rch.dwg

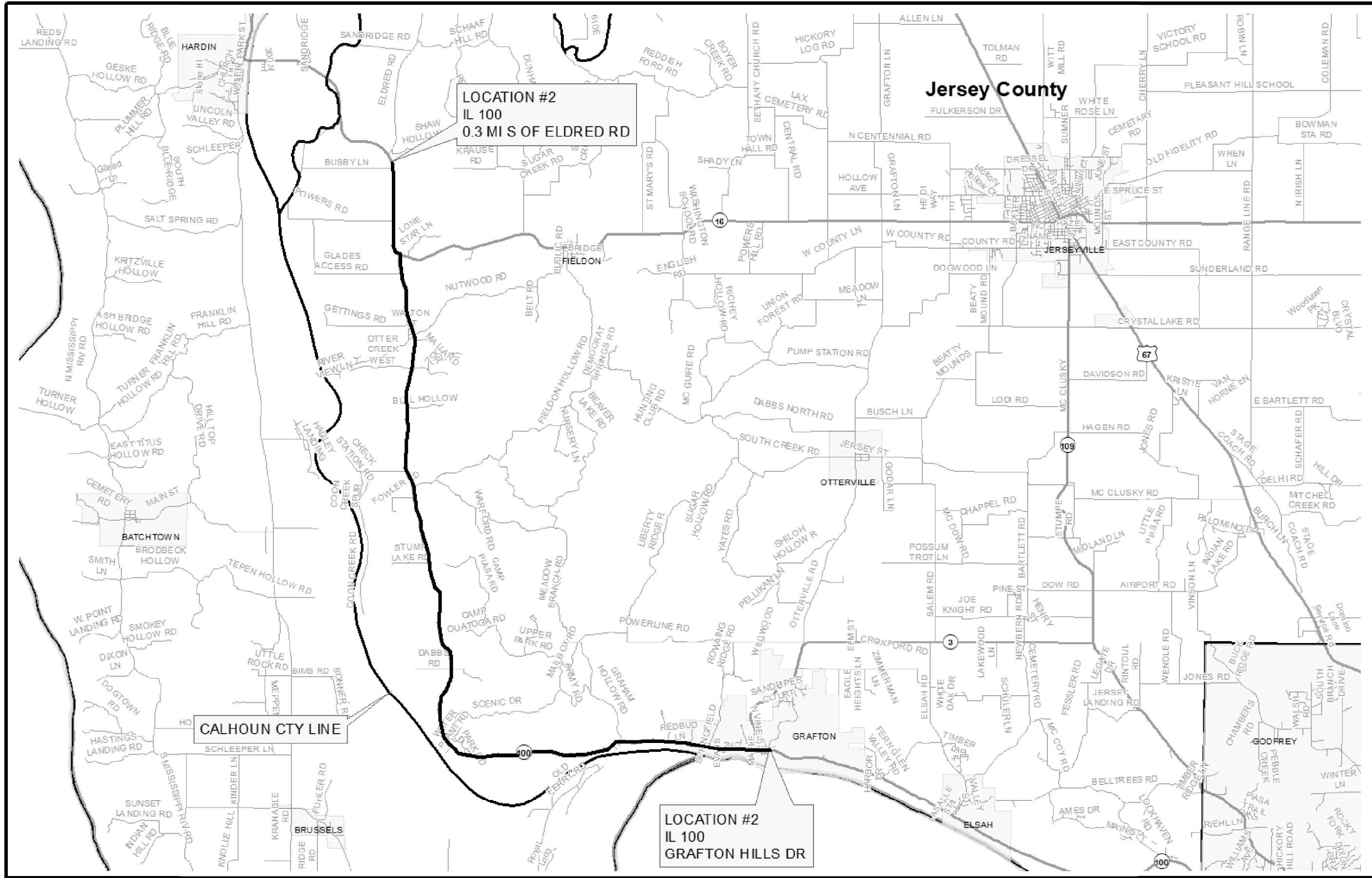
USER NAME = humphreysb	DESIGNED -	REVISED -
	DRAWN -	REVISED -
PLOT SCALE = 40,0000' / in.	CHECKED -	REVISED -
PLOT DATE = 6/17/2021	DATE -	REVISED -

**STATE OF ILLINOIS
DEPARTMENT OF TRANSPORTATION**

LOCATION #1 MAP - GREENE COUNTY

SCALE: NTS SHEET 1 OF 2 SHEETS STA. TO STA.

F.A.P. RTE.	SECTION	COUNTY	TOTAL SHEETS	SHEET NO.
761304	(101,102,103,104,107)MRK-1	GREENE, JERSEY	9	8
		CONTRACT NO. 76P75		
		ILLINOIS FED. AID PROJECT		



MODEL: Default
 FILE NAME: p:\data\amr\proj\7675\CADD\DATA\CAD\Access\0876975-pts-08a.dgn
 PROJECT: 0876975\CADD\DATA\CAD\Access\0876975-pts-08a.dgn

USER NAME = humpreysb	DESIGNED -	REVISED -
	DRAWN -	REVISED -
PLOT SCALE = 40,0000' / in.	CHECKED -	REVISED -
PLOT DATE = 6/17/2021	DATE -	REVISED -

**STATE OF ILLINOIS
DEPARTMENT OF TRANSPORTATION**

LOCATION #2 MAP - JERSEY COUNTY

SCALE: NTS SHEET 2 OF 2 SHEETS STA. TO STA.

F.A.P. RTE.	SECTION	COUNTY	TOTAL SHEETS	SHEET NO.
761/304	(101,102,103,104,107)MRK-1	GREENE, JERSEY	9	9
CONTRACT NO. 76P75				
ILLINOIS FED. AID PROJECT				