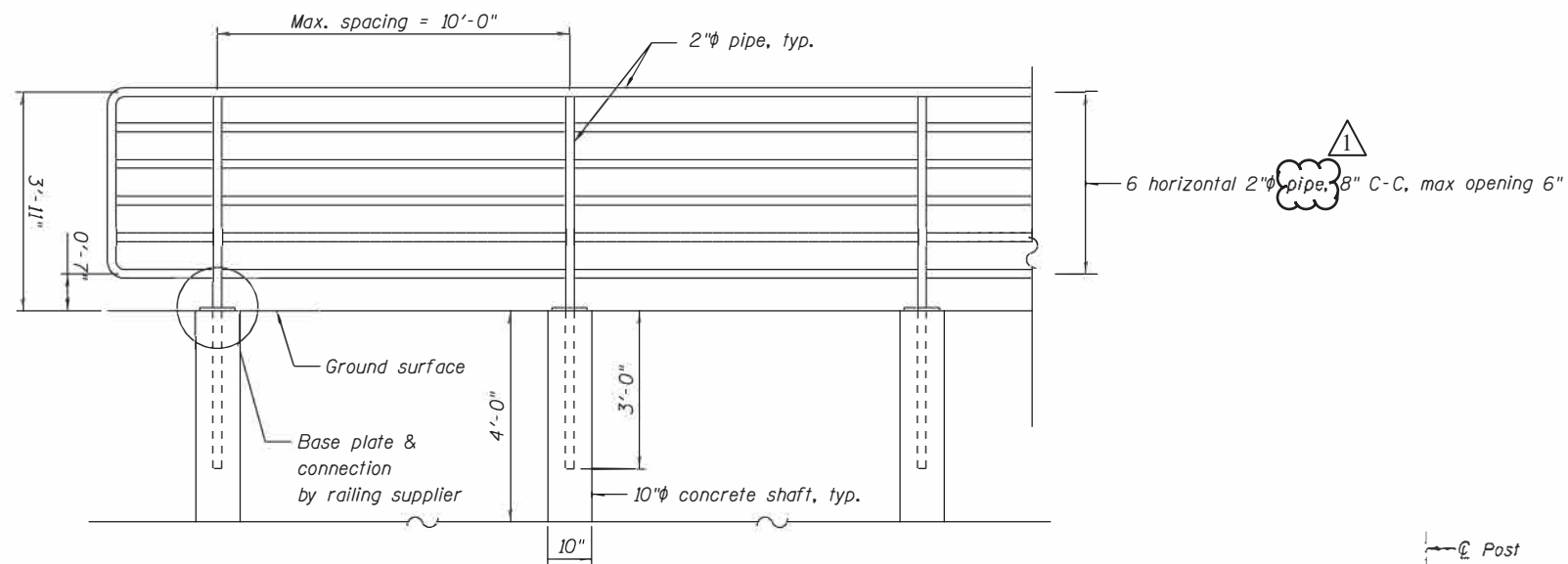


BICYCLE RAILING



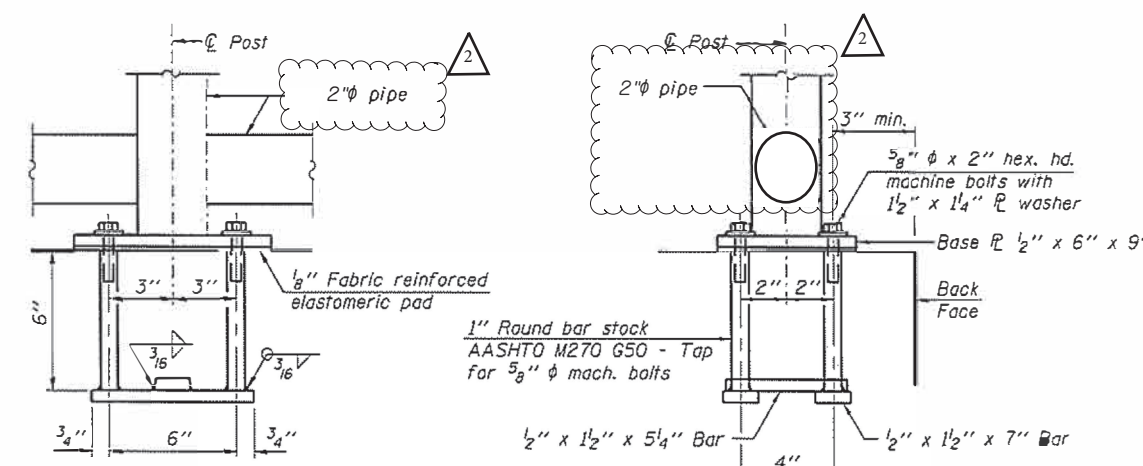
BICYCLE RAILING (GROUND MOUNTED)

NOTES

- All steel posts, rails, splices, anchorage devices, plates and other rail elements shall be galvanized per Article 509.05(d) of the Standard Specifications.
- All structural steel tubing, post and railing for bicycle railing shall be CVN tested according to Article 1006.34(b) of the Standard Specifications.

STATION	OFFSET	MOUNT LOCATION
150+29.98	6.00' RT	GROUND MOUNT
150+38.98	6.00' RT	GROUND MOUNT
150+47.98	6.00' RT	GROUND MOUNT
150+56.98	6.00' RT	GROUND MOUNT
150+65.98	7.72' RT	BRIDGE HEADWALL
150+74.97	8.08' RT	BRIDGE HEADWALL
150+83.96	8.44' RT	BRIDGE HEADWALL
150+92.96	8.36' RT	BRIDGE HEADWALL
151+01.96	8.29' RT	BRIDGE HEADWALL
151+10.96	6.00' RT	GROUND MOUNT
151+19.96	6.00' RT	GROUND MOUNT
151+28.96	6.00' RT	GROUND MOUNT
151+37.96	6.00' RT	GROUND MOUNT
150+30.80	6.00' LT	GROUND MOUNT
150+39.80	6.00' LT	GROUND MOUNT
150+48.80	6.00' LT	GROUND MOUNT
150+57.80	6.00' LT	GROUND MOUNT
150+66.80	6.36' LT	BRIDGE HEADWALL
150+75.80	6.42' LT	BRIDGE HEADWALL
150+84.80	6.49' LT	BRIDGE HEADWALL
150+93.80	6.35' LT	BRIDGE HEADWALL
151+02.80	6.21' LT	BRIDGE HEADWALL
151+11.80	6.00' LT	GROUND MOUNT
151+20.80	6.00' LT	GROUND MOUNT
151+29.80	6.00' LT	GROUND MOUNT
151+38.80	6.00' LT	GROUND MOUNT
166+38.36	6.00' LT	GROUND MOUNT
166+48.36	6.00' LT	GROUND MOUNT
166+58.33	6.00' LT	GROUND MOUNT
166+68.09	6.00' LT	GROUND MOUNT
166+77.86	6.00' LT	GROUND MOUNT
166+87.62	6.00' LT	GROUND MOUNT
166+97.39	6.00' LT	GROUND MOUNT
167+07.39	6.00' LT	GROUND MOUNT
167+17.39	6.00' LT	GROUND MOUNT
167+27.39	6.00' LT	GROUND MOUNT
167+37.39	6.00' LT	GROUND MOUNT
167+47.39	6.00' LT	GROUND MOUNT
167+57.39	6.00' LT	GROUND MOUNT
167+67.39	6.00' LT	GROUND MOUNT
167+77.39	6.00' LT	GROUND MOUNT
167+87.39	6.00' LT	GROUND MOUNT
167+97.39	6.00' LT	GROUND MOUNT
168+07.20	6.00' LT	GROUND MOUNT
168+16.97	7.00' LT	GROUND MOUNT
168+26.73	7.00' LT	GROUND MOUNT
168+36.50	7.00' LT	GROUND MOUNT
168+46.27	6.00' LT	GROUND MOUNT
168+56.43	6.00' LT	GROUND MOUNT
167+98.05	5.61' RT	GROUND MOUNT
168+08.23	5.22' RT	GROUND MOUNT
168+18.39	4.62' RT	GROUND MOUNT
168+28.61	5.06' RT	GROUND MOUNT

STATION	OFFSET	MOUNT LOCATION
173+89.64	5.03' LT	GROUND MOUNT
173+99.70	5.25' LT	GROUND MOUNT
174+05.72	5.75' LT	GROUND MOUNT
174+15.58	6.00' LT	GROUND MOUNT
174+25.01	6.00' LT	GROUND MOUNT
174+34.45	6.00' LT	GROUND MOUNT
174+43.88	6.00' LT	GROUND MOUNT
174+53.31	6.00' LT	GROUND MOUNT
174+63.42	6.00' LT	GROUND MOUNT
174+73.77	6.00' LT	GROUND MOUNT
181+40.42	6.00' LT	GROUND MOUNT
181+50.57	6.00' LT	GROUND MOUNT
181+60.39	6.00' LT	GROUND MOUNT
181+69.93	6.00' LT	GROUND MOUNT
181+79.47	6.00' LT	GROUND MOUNT
181+89.01	6.00' LT	GROUND MOUNT
181+98.56	6.00' LT	GROUND MOUNT
182+08.10	6.00' LT	GROUND MOUNT
182+17.77	6.00' LT	GROUND MOUNT
182+27.89	6.00' LT	GROUND MOUNT
187+99.52	6.00' LT	GROUND MOUNT
188+09.36	6.00' LT	GROUND MOUNT
188+18.73	6.00' LT	GROUND MOUNT
188+28.50	6.00' LT	GROUND MOUNT
187+99.30	6.00' RT	GROUND MOUNT
188+09.46	5.91' RT	GROUND MOUNT
188+20.06	5.40' RT	GROUND MOUNT
188+29.59	5.00' RT	GROUND MOUNT
188+85.00	6.00' LT	GROUND MOUNT
188+95.00	6.00' LT	GROUND MOUNT
189+05.00	6.00' LT	GROUND MOUNT
189+15.00	6.00' LT	GROUND MOUNT



ANCHOR BOLT DETAILS

In lieu of the cast-in-place anchor device shown, the Contractor has the option of drilling and setting 5/8" diameter anchor rods according to Article 509.06 of the Standard Specifications. Embedment shall be according to the manufacturer's specifications.

MODEL: \\MODELNAME  
 FILE NAME: Z:\2020\2020129 PrairiePath\Headwall\18-401-129-ht-grades.dgn

**WBK engineering**  
 WBK ENGINEERING, LLC  
 116 WEST MAIN STREET, SUITE 201  
 ST. CHARLES, ILLINOIS 60174  
 (630) 443-7755

USER NAME = \$USER\$	DESIGNED - JLB	REVISED -
PLOT SCALE = \$SCALE\$	DRAWN - JLB	REVISED -
PLOT DATE = 7/2/2021	CHECKED - YOO	REVISED -
	DATE - 07/07/2021	REVISED -

STATE OF ILLINOIS  
 DEPARTMENT OF TRANSPORTATION

ILLINOIS PRAIRIE PATH  
 GENERAL DETAILS

SCALE: SHEET 1 OF 1 SHEETS STA. TO STA.

SECTION	COUNTY	TOTAL SHEETS	SHEET NO.
18-P4004-01-BT	KANE	107	76
CONTRACT NO. 61H17			
ILLINOIS FED. AID PROJECT			