

STATE OF ILLINOIS
DEPARTMENT OF TRANSPORTATION

F.A. RTE.	SECTION	COUNTY	TOTAL SHEETS	SHEET NO.
*	D7 FENCING 2022-1	VARIOUS	7	1
		ILLINOIS	CONTRACT NO. 74A72	

* VARIOUS

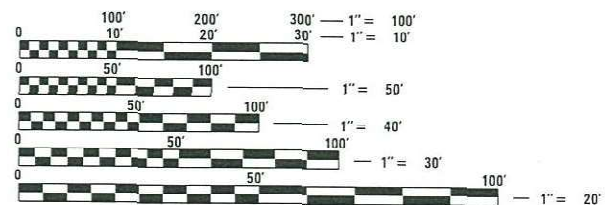
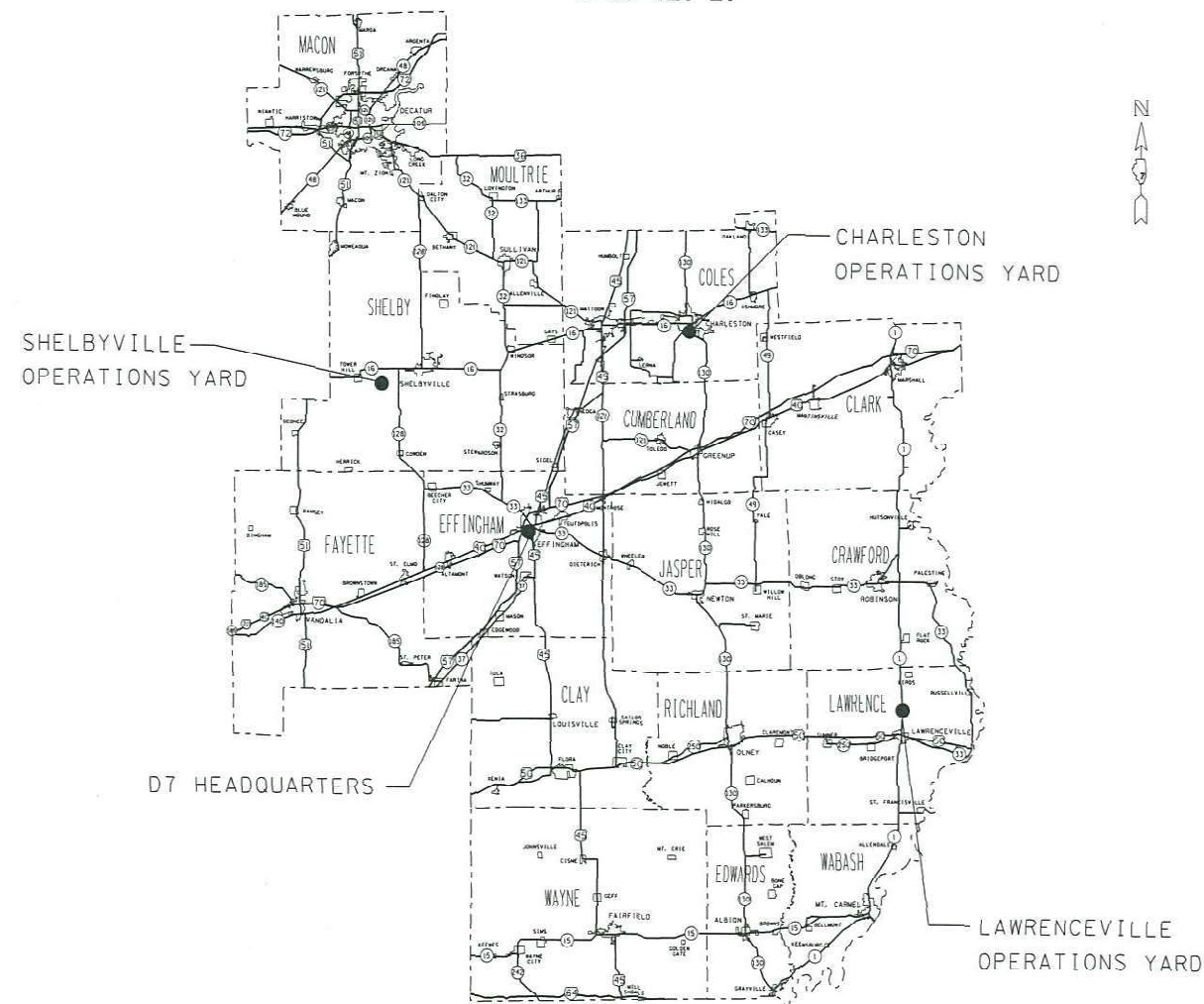
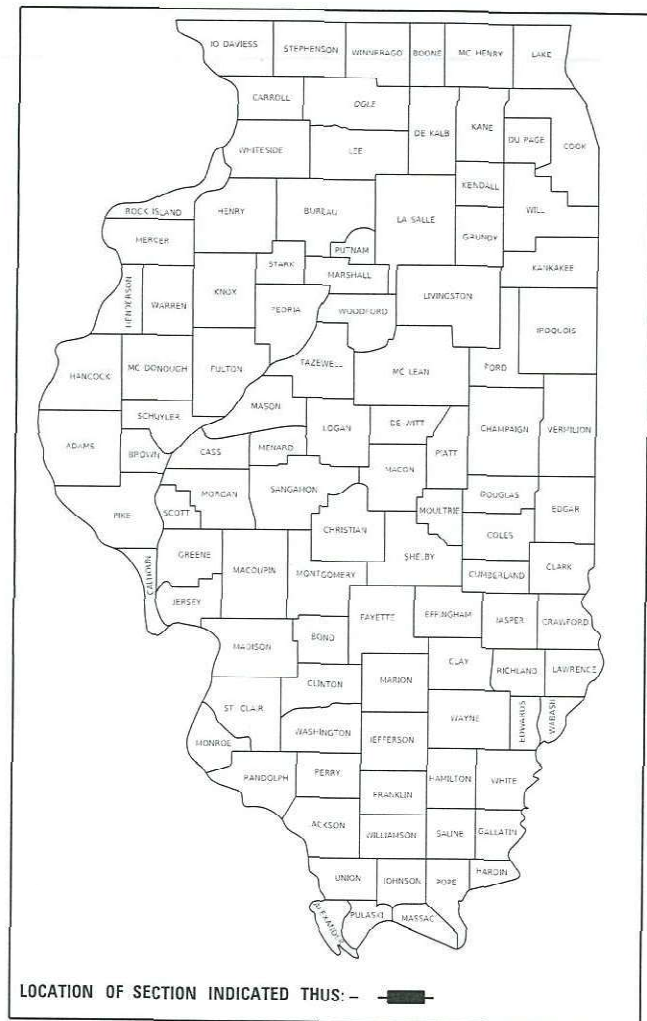
FOR INDEX OF SHEETS, SEE SHEET NO. 2

PROPOSED HIGHWAY PLANS

VARIOUS ROUTES
SECTION D7 FENCING 2022-1

FENCE REPLACEMENT
VARIOUS COUNTIES

C-97-121-21



FULL SIZE PLANS HAVE BEEN PREPARED USING STANDARD ENGINEERING SCALES. REDUCED SIZED PLANS WILL NOT CONFORM TO STANDARD SCALES. IN MAKING MEASUREMENTS ON REDUCED PLANS, THE ABOVE SCALES MAY BE USED.

J.U.L.I.E.
JOINT UTILITY LOCATION INFORMATION FOR EXCAVATORS
1-800-892-0123
OR 811

PROJECT ENGINEER: BRIAN LEWIS
PROJECT MANAGER: BRIAN LEWIS

CONTRACT NO. 74A72

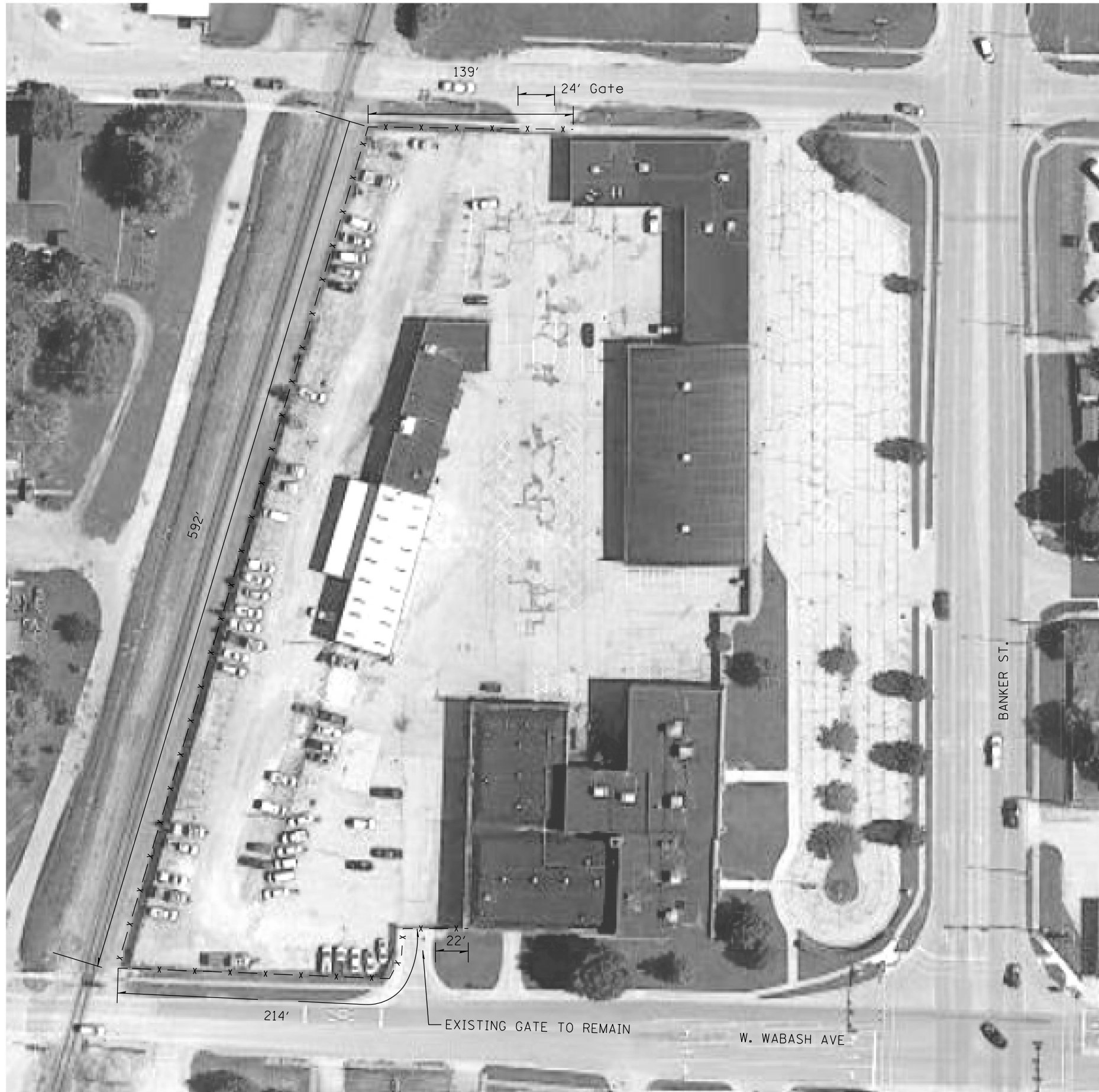
STATE OF ILLINOIS
DEPARTMENT OF TRANSPORTATION

SUBMITTED July 14 2021
Jeffrey P. Mynick
REGIONAL ENGINEER

August 13, 2021
Scott A. Elk
ENGINEER OF DESIGN AND ENVIRONMENT

August 13, 2021
James J. Gu
DIRECTOR OF HIGHWAYS PROJECT IMPLEMENTATION 13

PRINTED BY THE AUTHORITY
OF THE STATE OF ILLINOIS



DISTRICT 7 HEADQUARTERS

400 W Wabash
Effingham, IL 62401

Intersection of Route 45
and Wabash Avenue

**STATE OF ILLINOIS
DEPARTMENT OF TRANSPORTATION**

**DISTRICT 7 OFFICE
FENCING PLANS**

SCALE: SHEET OF SHEETS STA. TO STA.

F.A. RTE.	SECTION	COUNTY	TOTAL SHEETS	SHEET NO.
*	D7 FENCING 2022-1	VARIOUS	7	4
* VARIOUS			CONTRACT NO. 74A72	
		ILLINOIS	FED. AID PROJECT	

MODEL NUMBER: MAMT5
FILE NAME: 071215

USER NAME = SUSERS	DESIGNED -	REVISED -
	DRAWN -	REVISED -
PLOT SCALE = 5SCALES	CHECKED -	REVISED -
PLOT DATE = 5DATES	DATE -	REVISED -



SHELBYVILLE OPERATIONS YARD

1588 State Highway 16
Shelbyville, IL 62565

3/4 mile east of IL 128,
1/4 mile south of IL 16

MODEL NUMBER: MAMES
FILE NAME: 816165

USER NAME = SUSERS	DESIGNED -	REVISED -
	DRAWN -	REVISED -
PLOT SCALE = 5/8"=1'	CHECKED -	REVISED -
PLOT DATE = 5/20/22	DATE -	REVISED -

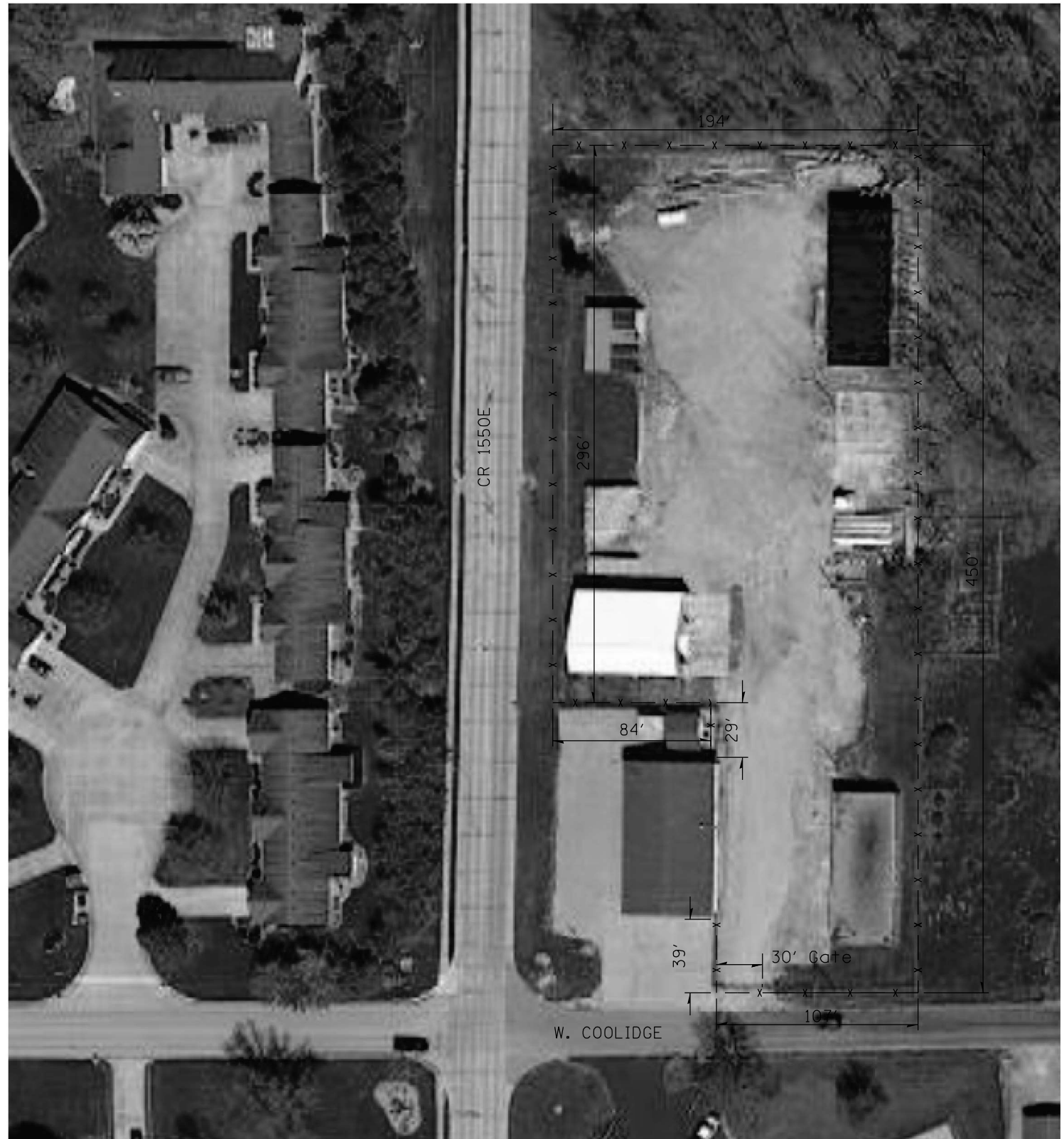
**STATE OF ILLINOIS
DEPARTMENT OF TRANSPORTATION**

**SHELBYVILLE MAINTENANCE YARD
FENCING PLAN**

SCALE: SHEET OF SHEETS STA. TO STA.

F.A. RTE.	SECTION	COUNTY	TOTAL SHEETS	SHEET NO.
*	D7 FENCING 2022-1	VARIOUS	7	5
* VARIOUS		CONTRACT NO. 74A72		
		ILLINOIS	FED. AID PROJECT	

MODEL: Default
 FILE NAME: p:\pub\baronm.dwt\illinois\pwr\WIDOT\Documents\DOT_Offices\District 7\Projects\74A72\CADD\Drawings\74A72-01-01.dwg CHARLESTON.dgn



CHARLESTON OPERATIONS YARD

371 W Coolidge
 Charleston, IL 62439

Located at the NE Corner of
 W Coolidge and County Road 1550 E

USER NAME = steffenmk	DESIGNED -	REVISED -
	DRAWN -	REVISED -
PLOT SCALE = 100,0000' / in.	CHECKED -	REVISED -
PLOT DATE = 7/14/2021	DATE -	REVISED -

**STATE OF ILLINOIS
 DEPARTMENT OF TRANSPORTATION**

**CHARLESTON MAINTENANCE YARD
 FENCING PLANS**

SCALE: SHEET OF SHEETS STA. TO STA.

F.A. RTE.	SECTION	COUNTY	TOTAL SHEETS	SHEET NO.
*	D7 FENCING 2022-1	VARIOUS	7	6
* VARIOUS			CONTRACT NO. 74A72	
		ILLINOIS	FED. AID PROJECT	

