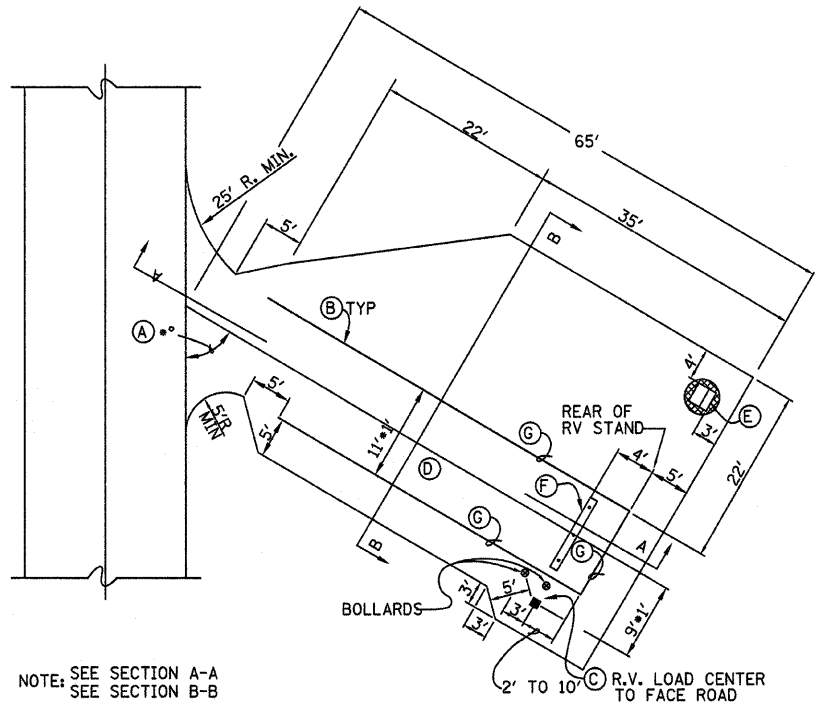
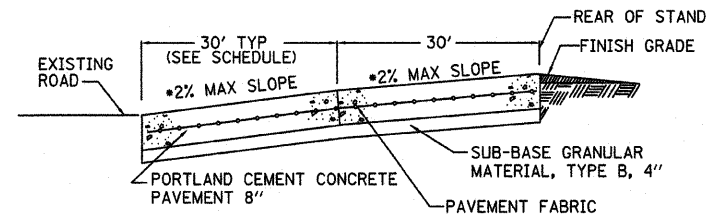


- (A) ANGLE • = 60° EXCEPT AS SHOWN ON ROAD CONSTRUCTION PLAN.
- (B) ALL R.V. SITE PADS SHALL HAVE NO MORE THAN 2% SLOPE ON REAR 30 FEET AND 2% ON REMAINING LENGTH.
- (C) CONTRACTOR SHALL COORDINATE THEIR WORK FOR R.V. PEDESTAL LOCATION RELATIVE TO CAP PAD CENTERLINE AND REAR OF THE R.V. STAND ACCORDING TO THESE DWG. AND NEC 551-76c
- (D) NO R.V. SITE PAD SHALL BE CLOSER THAN 10' FROM ANY OTHER ONE.
- (E) GRILL (BLACK)
- (F) RESET BUMPER BLOCKS (TIMBER) TO BE INSTALLED AS SHOWN. SECURE TO CAMP PAD WITH 3/4" REBAR 36" LONG, SINK REBAR 1" BELOW TOP OF BUMPER. 3 REQUIRED PER BUMPER AT 3'-6" CENTERS.
- (G) DESIGNATED R.V. PARKING PAD AREA WITH A 6" WIDE PAINTED YELLOW LINE.

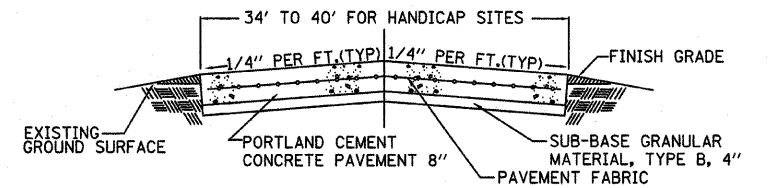


NOTE: SEE SECTION A-A
SEE SECTION B-B

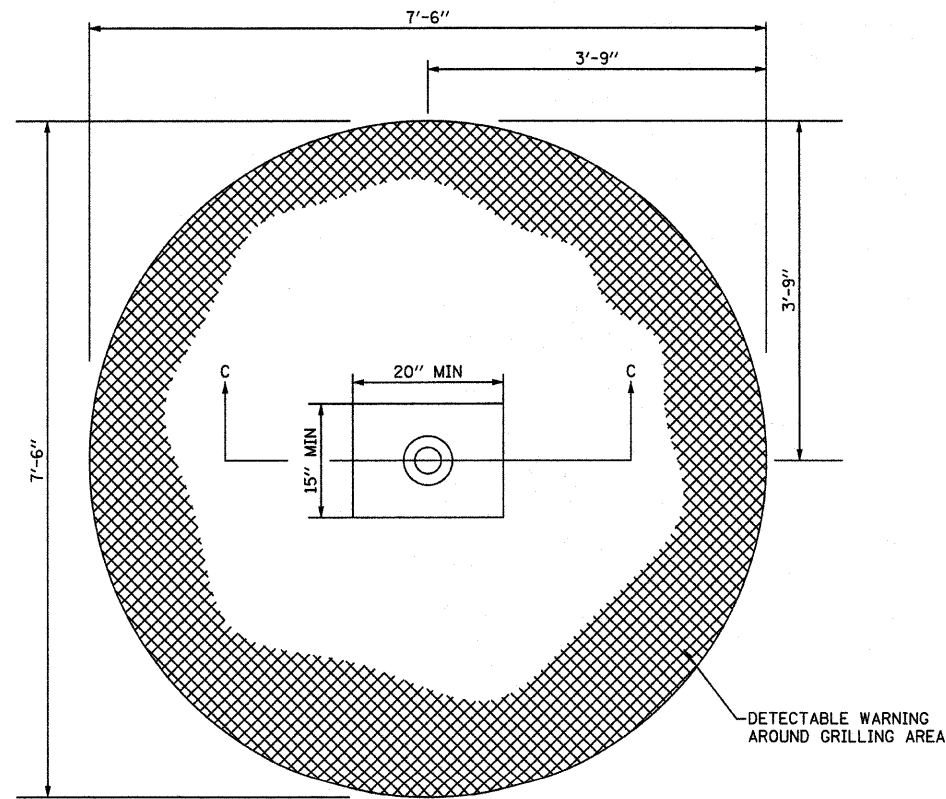
TYPICAL HANDICAP BACK IN CAMPSITE
NOT TO SCALE



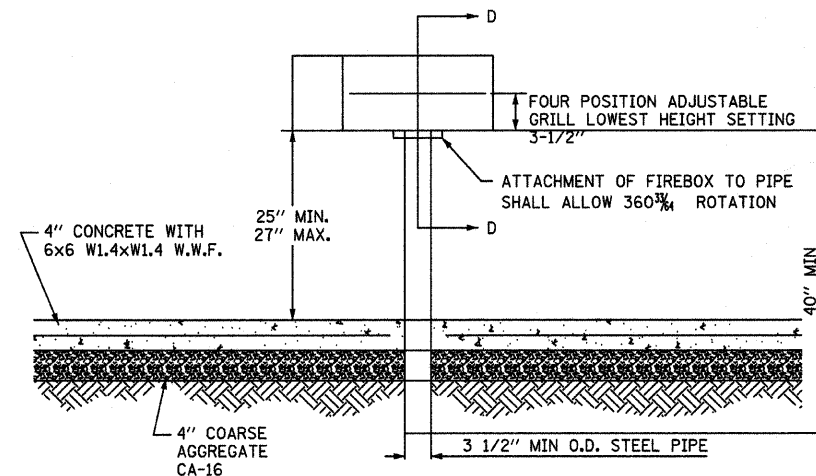
SECTION A-A (NEW CONSTRUCTION)
NOT TO SCALE



SECTION B-B (NEW CONSTRUCTION)
NOT TO SCALE



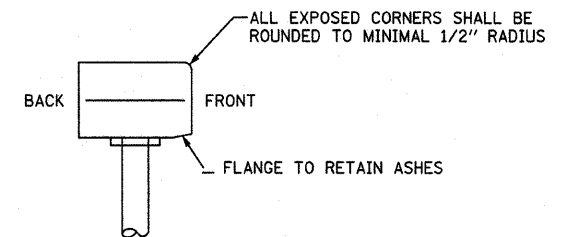
GRILL AREA
NOT TO SCALE



SECTION C-C
NOT TO SCALE

THE COOKING GRATE, 300 SQUARE INCHES MINIMUM, SHALL BE CONSTRUCTED OF 1/2" OR LARGER DIAMETER A-36 STEEL BARS ON 1-1/8" CENTERS.

ALL CONNECTIONS, HARDWARE, AND ANCHORING SHALL BE IN ACCORDANCE WITH THE MANUFACTURER'S RECOMMENDATIONS.



THE BACK, SIDES, AND BOTTOM OF THE FIREBOX SHALL BE 3/16" PLATE STEEL THE FRONT SHALL BE OPEN THE ENTIRE UNIT SHALL BE FINISHED IN HIGH TEMPERATURE, HEAT RESISTANT, NON-TOXIC BLACK ENAMEL

SECTION D-D
NOT TO SCALE

FILE NAME =	USER NAME = #USER#	DESIGNED - T.T.P.	REVISED -	STATE OF ILLINOIS DEPARTMENT OF TRANSPORTATION	DETAILS PIERRE MENARD/FORT KAKSKASKIA STATE HISTORIC SITE			F.A. RTE.	SECTION	COUNTY	TOTAL SHEETS	SHEET NO.
#FILEL#		DRAWN - S.D.K.	REVISED -		SCALE:	SHEET NO. 12 OF 16 SHEETS	STA.	TO STA.	TANDALPH	16	12	
		CHECKED - R.H.D.	REVISED -						CONTRACT NO. 46003			
		PLOT DATE = #DATE#	REVISED -						ILLINOIS FED. AID PROJECT			

JOB NO. 250-061-H VASCONCELLES ENGINEERING CORP. DESIGN FIRM REGISTRATION NUMBER 184-002107