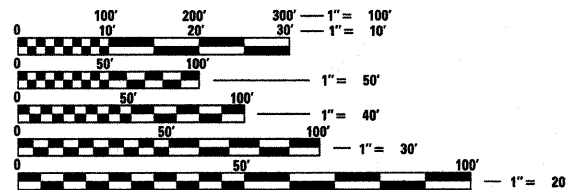


INDEX OF SHEETS

SHEET NO.	SHEET TITLE
1	COVER SHEET
2	SUMMARY OF QUANTITIES, STANDARDS, AND GENERAL NOTES
3	SCHEDULE OF QUANTITIES
4	TYPICAL SECTIONS
5	FORT KASKASKIA SITE ENTERANCE SIGN
6	FORT KASKASKIA PLAYGROUND AREA SPEED BUMP
7	FORT KASKASKIA CAMPGROUND ENTRANCE
8	FORT KASKASKIA CAMPGROUND
9	PIERRE MENARD EAST PARKING LOT RESTRIPIPING
10	PIERRE MENARD HOME
11-12	DETAILS
13	KASKASKIA RV PARK ELECTRICAL PLANS AND NOTES
14	PIERRE MENARD HOME ELECTRICAL PLANS AND NOTES
15	ELECTRICAL DETAILS AND NOTES
16	ELECTRICAL DETAILS

LEGEND

- EXISTING GUARD RAIL
- EXISTING ABOVE GROUND SPLICE BOX
- EXISTING POWER POLE
- ⊕ EXISTING CONIFEROUS TREE
- ⊙ EXISTING DECIDUOUS TREE
- EXISTING CLEAN OUT
- ⊥ EXISTING SIGN
- EXISTING WATER VALVE



FULL SIZE PLANS HAVE BEEN PREPARED USING STANDARD ENGINEERING SCALES. REDUCED SIZED PLANS WILL NOT CONFORM TO STANDARD SCALES. IN MAKING MEASUREMENTS ON REDUCED PLANS, THE ABOVE SCALES MAY BE USED.

J.U.L.I.E.
JOINT UTILITY LOCATION INFORMATION FOR EXCAVATION
1-800-892-0123
OR 811

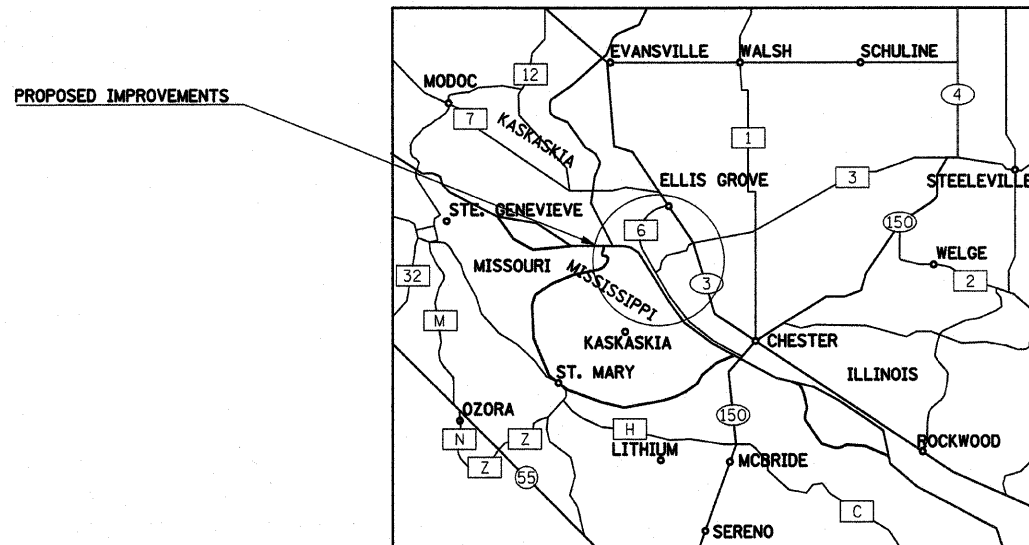
**PROJECT ENGINEER
PROJECT MANAGER**

CONTRACT NO. 46003

**STATE OF ILLINOIS
DEPARTMENT OF TRANSPORTATION
DIVISION OF HIGHWAYS**

**PROPOSED
HIGHWAY PLANS**

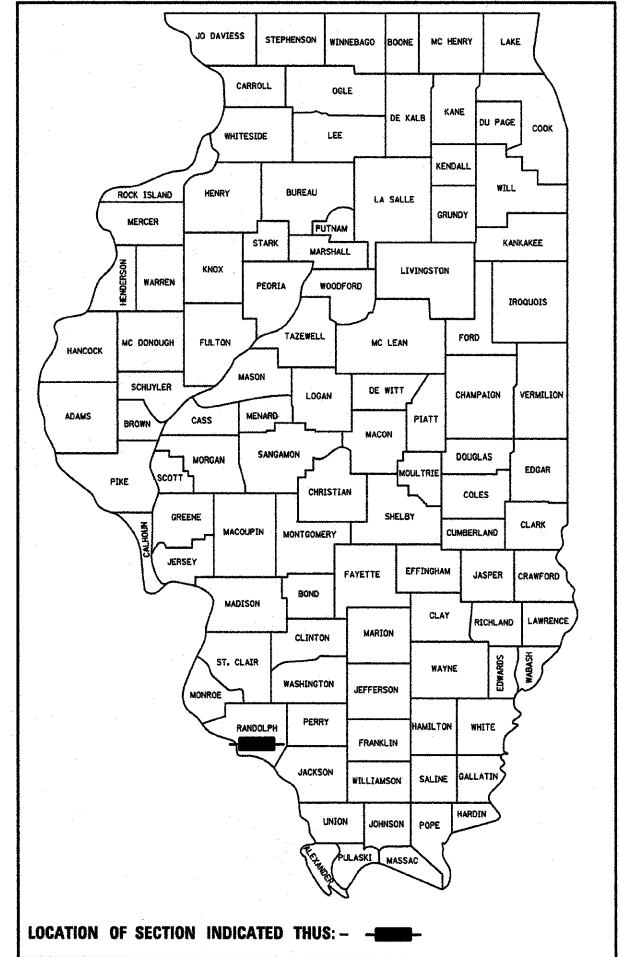
**IDOT /IHPA STATEWIDE
PIERRE MENARD/FORT KASKASKIA STATE HISTORIC SITES
SIDEWALK AND CAMPGROUND
RANDOLPH COUNTY
C-30-046-08**



PROFESSIONAL SEALS
PROFESSIONAL SEAL OF ROBERT H. DALTON P.E.
COVERS THE FOLLOWING SHEETS: 1-12
PROFESSIONAL SEAL OF DAVID URY P.E.
COVERS THE FOLLOWING SHEETS: 13-16



F.A. RTE.	SECTION	COUNTY	TOTAL SHEETS	SHEET NO.
		RANDOLPH	16	1
FED. ROAD DIST. NO.	ILLINOIS	CONTRACT NO. 46003		



STATE OF ILLINOIS
DEPARTMENT OF TRANSPORTATION
DIVISION OF HIGHWAYS

SUBMITTED August 25, 2009
Eric E. Harms
DEPUTY DIRECTOR OF HIGHWAYS, REGION ENGINEER

August 14, 2009
Charles J. Ingersoll
ENGINEER OF DESIGN AND ENVIRONMENT

August 14, 2009
Christine M. Reed
DIRECTOR OF HIGHWAYS, CHIEF ENGINEER

**PRINTED BY THE AUTHORITY
OF THE STATE OF ILLINOIS**

1000
100% STATE

SUMMARY OF QUANTITIES			
CODE #	PAY ITEM	UNITS	TOTAL
20100110	TREE REMOVAL (6 TO 15 UNITS DIAMETER)	UNIT	10
20100210	TREE REMOVAL (OVER 15 UNITS DIAMETER)	UNIT	20
20200100	EARTH EXCAVATION	CU YD	212
*21101600	TOPSOIL FURNISH AND PLACE, VARIABLE DEPTH	SQ YD	267
21400100	GRADING AND SHAPING DITCHES	FOOT	123
*25000100	SEEDING, CLASS 1	ACRE	0.30
*25000400	NITROGEN FERTILIZER NUTRIENT	POUND	27
*25000500	PHOSPHORUS FERTILIZER NUTRIENT	POUND	27
*25000600	POTASSIUM FERTILIZER NUTRIENT	POUND	27
*25000700	AGRICULTURAL GROUND LIMESTONE	TON	0.60
*25100115	MULCH, METHOD 2	ACRE	0.30
31101200	SUB-BASE GRANULAR MATERIAL, TYPE B 4"	SQ YD	255.1
35102000	AGGREGATE BASE COURSE, TYPE B 8"	SQ YD	524.4
40600100	BITUMINOUS MATERIALS (PRIME COAT)	GALLON	212
40600300	AGGREGATE (PRIME COAT)	TON	0.26
40600982	HOT-MIX ASPHALT SURFACE REMOVAL-BUTT JOINT	SQ YD	13
40603315	HOT-MIX ASPHALT SURFACE COURSE, MIX "C", N70	TON	69.5
42000300	PORTLAND CEMENT CONCRETE PAVEMENT 8"	SQ YD	255.1
42001200	PAVEMENT FABRIC	SQ YD	255
42400200	PORTLAND CEMENT CONCRETE SIDEWALK 5 INCH	SQ FT	25
42400500	PORTLAND CEMENT CONCRETE SIDEWALK, SPECIAL	SQ FT	797
42400800	DETECTABLE WARNINGS	SQ FT	67
44000600	SIDEWALK REMOVAL	SQ FT	25
44002400	CURB REMOVAL (SPECIAL)	FOOT	206
44004700	SIDEWALK REMOVAL (SPECIAL)	SQ FT	1297
45100100	CRACK ROUTING (PAVEMENT)	FOOT	2300
45100200	CRACK FILLING	POUND	2300
50105220	PIPE CULVERT REMOVAL	FOOT	101
67100100	MOBILIZATION	L SUM	1
*72000100	SIGN PANEL-TYPE 1	SQ FT	5.5
*73000100	WOOD SIGN SUPPORT	FOOT	10
*78001100	PAINT PAVEMENT MARKING - LETTERS AND SYMBOLS	SQ FT	9.2
*78001130	PAINT PAVEMENT MARKING - LINE 6"	FOOT	634
*81000200	CONDUIT IN TRENCH, 3/4" DIA., GALVANIZED STEEL	FOOT	385
*81000300	CONDUIT IN TRENCH, 1" DIA., GALVANIZED STEEL	FOOT	70
*81012200	CONDUIT IN TRENCH, 3/4" DIA., PVC	FOOT	150
*81012300	CONDUIT IN TRENCH, 1" DIA., PVC	FOOT	460
*81702415	ELECTRIC CABLE IN CONDUIT, 600V (XLP-TYPE USE) 3-1/C NO. 6	FOOT	270
*81702420	ELECTRIC CABLE IN CONDUIT, 600V (XLP-TYPE USE) 3-1/C NO. 8	FOOT	435
*81900200	TRENCH AND BACKFILL FOR ELECTRICAL WORK	FOOT	3230
*87001160	ELECTRIC CABLE IN TRENCH, 600V (XLP-TYPE USE) 1/C NO. 2	FOOT	2810
*87001180	ELECTRIC CABLE IN TRENCH, 600V (XLP-TYPE USE) 1/C NO. 2/0	FOOT	772
*87001200	ELECTRIC CABLE IN TRENCH, 600V (XLP-TYPE USE) 1/C NO. 4/0	FOOT	10914
*A2006912	TREE, QUERCUS PALUSTRIS (PIN OAK), 1-1/2" CALIPER, BALLED AND BURLAPPED	EACH	2
*X0323395	POWER DISTRIBUTION CENTER, PEDESTAL MOUNT	EACH	24
X0324073	CHARCOAL PEDESTAL GRILL	EACH	1
*X0325541	REMOVE EXISTING LIGHTING SYSTEM	L SUM	1
X0350800	BOLLARDS	EACH	2
*X0974300	SIGN REMOVAL	EACH	2
*XX002063	LIGHTING SYSTEM COMPLETE	L SUM	1
*XX005644	MINOR SIGN COMPLETE	EACH	2
XX005837	CUT STONE CAP	SQ FT	5
*XX005944	FLOOD LIGHT, GROUND MOUNTED, 175 WATTS, METAL HALIDE	EACH	6
XZ176100	REMOVE AND RESET BUMPER BLOCKS	EACH	13
Z0003300	BASE COURSE REMOVAL (SPECIAL)	SQ YD	228

* SPECIALTY ITEMS

LIST OF STANDARDS

- 420701-02 PAVEMENT FABRIC
- 424001-05 CURB RAMPS FOR SIDEWALKS
- 701301-03 LANE CLOSURE, 2L, 2W, SHORT TIME OPERATIONS
- 701901-01 TRAFFIC CONTROL DEVICES
- BLR17-4 TRAFFIC CONTROL DEVICES - DAY LABOR CONSTRUCTION

GENERAL NOTES

- 1) ALL ELEVATIONS ARE REFERENCED TO ELEVATIONS ESTABLISHED BY VASCONCELLES ENGINEERING CORP.
- 2) WHERE SECTION OR SUBSECTION MONUMENTS ARE ENCOUNTERED, THE ENGINEER SHALL BE NOTIFIED BEFORE SUCH MONUMENTS ARE REMOVED. THE CONTRACTOR SHALL PROTECT AND CAREFULLY PRESERVE ALL PROPERTY MARKERS AND MONUMENTS UNTIL THE OWNER AND AUTHORIZED SURVEYOR OR AGENT HAS WITNESSED OR OTHERWISE REFERENCED THEIR LOCATION. IF THE ENGINEER DECIDES TO HAVE THE CONTRACTOR RESET THE MONUMENT, THIS WORK WILL BE PAID FOR IN ACCORDANCE WITH ARTICLE 109.04.
- 3) THE CONTRACTOR SHALL CONTACT J.U.L.I.E. PRIOR TO ANY EXCAVATION TO HAVE ALL PUBLIC AND PRIVATE UTILITIES LOCATED.
- 4) THE CONTRACTOR SHALL BE RESPONSIBLE FOR PROTECTING UTILITY PROPERTY FROM CONSTRUCTION OPERATIONS AS OUTLINED IN ARTICLE 107.26 OF THE STANDARD SPECIFICATIONS. THE J.U.L.I.E. NUMBER IS (800) 892-0123. A MINIMUM OF 48 HOURS ADVANCE NOTICE IS REQUIRED. SEE SPECIAL PROVISIONS FOR STATUS OF UTILITIES, WITH UTILITY COMPANIES LISTED.
- 5) ANY REFERENCE TO THE STANDARDS THROUGHOUT THE PLANS SHALL BE INTERPRETED TO BE THE LATEST STANDARDS OF THE DEPARTMENT AS INCLUDED IN THE PLANS.
- 6) ALL DETAILS IN THE PLANS SHALL GOVERN CONSTRUCTION OF THIS PROJECT, AND IN CASE OF CONFLICT WITH ANY STANDARD DRAWINGS INCLUDED, THE SAID DETAILS SHALL TAKE PRECEDENCE AND GOVERN.
- 7) SITE RANGER FOR FORT KASKASKIA IS CHESTER WINGERTER.
- 8) SITE ADMINISTRATOR FOR PIERRE MENARD IS ANDREW COOPERMAN.

SIGNING SCHEDULE

LOCATION	MESSAGE	MUTCD NO.	WOOD SIGN SUPPORT	SIGN PANEL T-1	MINOR SIGN COMP.	SIGN REMOVAL
			(FOOT)	(SQ FT)	(EACH)	(EACH)
PIERRE MENARD EAST PARKING LOT STA. 54+88, 106' LT STA. 54+88, 122' LT	\$250 FINE \$250 FINE	R7-II01 R7-II01		0.5 0.5		
PIERRE MENARD WEST SIDEWALK SITE OFFICE STA. 49+39.39, 73.71' LT			10	2.25 2.25		
FORT KASKASKIA SITE ENTRANCE STA. 12+70, 25' RT	WELCOME SIGN				1	1
CAMPGROUND ENTRANCE STA. 9+33, 7' RT	WELCOME SIGN				1	1
TOTAL=			10	5.5	2	2

FILE NAME =	USER NAME = #USER#	DESIGNED - T.T.P.	REVISED - 7/8/09
#FILE#		DRAWN - S.D.K.	REVISED - 8/24/09
	PLOT SCALE = #SCALE#	CHECKED - R.H.D.	REVISED -
	PLOT DATE = #DATE#	DATE - 2/3/09	REVISED -

STATE OF ILLINOIS
DEPARTMENT OF TRANSPORTATION

SUMMARY OF QUANTITIES, STANDARDS, & GENERAL NOTES
PIERRE MENARD/FORT KASKASKIA STATE HISTORIC SITES

F.A. RTE.	SECTION	COUNTY	TOTAL SHEETS	SHEET NO.
		RANDOLPH	16	2
CONTRACT NO. 46003				
SCALE:		SHEET NO. 2 OF 16 SHEETS		STA. TO STA.
FED. ROAD DIST. NO.		ILLINOIS FED. AID PROJECT		

PAVING SCHEDULE																
LOCATION	EARTH EXCAVATION	BIT MATLS PR CT	AGG PR CT	HMA SC "C" IL-9.5 NTO	AGG BASE CSE B 8	BASE CSE REMOV SPL	PAVEMENT FABRIC	PC CONC SIDEWALK 5	PC CONC SIDEWALK SPC	DETECTABLE WARNINGS	PC CONC PAVEMENT 8"	SUB-BASE GRAN MAT'L TYPE B 4"	HMA SURF REM BUTT JT	REM RESET BUMPER BLKS	CRACK ROUTING	CRACK FILLING
	(CU YD)	(GALLONS)	(TON)	(TON)	(SQ YD)	(SQ YD)	(SQ YD)	(SQ FT)	(SQ FT)	(SQ FT)	(SQ FT)	(SQ FT)	(SQ YD)	(EACH)	(FOOT)	(POUND)
FORT KASKASKIA CAMPGROUND																
11+83.06	13	22.8		6.8	48.2									1		
12+29.58	15	25.2		7.5	55.3									1		
12+83.88	1	1.1		0.3	3.1									1		
13+20.26	1	1.1		0.3	3.0									1		
13+68.15	16	26.8		8.0	59.1									1		
14+16.20	1	1.1		0.3	3.2									1		
14+30.53	15	20.4		6.1	55.1									1		
14+74.26	16	21.3		6.4	57.6									1		
15+34.89	19	26.0		7.7	70.1									1		
15+85.14	1	1.2		0.3	3.2									1		
16+21.51	17	23.8		7.1	64.1									1		
16+73.66	1	1.1		0.3	3.1									1		
15+88 TO 16+06	24	34.6	0.24	15.5	97.1									1		
EXISTING ADA PAD														1		
NEW ADA PAD	71						255	25		67	255.1	255.1	13	1		
PARK ROAD AT PLAYGROUND AREA	1	5.5	0.02	2.9	2.2											
MENARD HOME																
STA. 49+36, 68.50' LT TO 51+22.20, 87.68' LT											690					
STA. 49+47, 30' LT											107					
STA. 51+74, 33' LT TO 51+73, 78' LT						228										
ENTIRE PROJECT															2300	2300
TOTAL =	212	212	0.26	69.5	524.4	228	255	25	797	67	255.1	255.1	13	13	2300	2300

MISCELLANEOUS SCHEDULE				
LOCATION	T-QUERCUS PALUS 1-1/2	CHARCOAL PEDESTAL GRILL	BOLLARDS	CUT STONE CAP
	(EACH)	(EACH)	(EACH)	(SQ. FT.)
MENARD HOME				
STA. 51+74, 30' LT - STA. 51+81, 31' LT				5
FORT KASKASKIA CAMPGROUND ADA PAD	2	1	2	
TOTAL =	2	1	2	5

PAVEMENT MARKING SCHEDULE		
LOCATION	PT PVT MK LTRS & SYMB	PAINT PVT MK LINE 6
	(SQ. FT.)	(FOOT)
PIERRE MENARD EAST PARKING LOT BUS STALL STRIPING		10
CAR STALL STRIPING		160
NEW ADA STALL STRIPING	9.2	234
		107
FORT KASKASKIA CROSSWALK, NEW AND EXISTING ADA PADS		123
TOTAL =	9.2	634

NOTE: LETTERS AND SYMBOLS
HANDICAP SYMBOL = 4.6 SQ FT

ELECTRICAL ITEMS														
LOCATION (STATION TO STATION)	CON T 3/4 GALVS	CON T 1 GALVS	CON T 3/4 PVC	CON T 1 PVC	EC C XLP USE 3-1C 6	EC C XLP USE 3-1C 8	TR & BKFL F ELECT WK	EC T XLP USE 1C 2	EC T XLP USE 1C 2/0	EC T XLP USE 1C 4/0	REM EX LIGHTING SYSTEM	F L GR M 175W MET HAL	POWER DISTRI CENTER	LIGHTING SYSTEM COMPLETE
	(FOOT)	(FOOT)	(FOOT)	(FOOT)	(FOOT)	(FOOT)	(FOOT)	(FOOT)	(FOOT)	(FOOT)	(L SUM)	(EACH)	(EACH)	(L SUM)
FORT KASKASKIA COMAPGROUND							2580	2810	772	10914				
10+47.67, 40.17' RT													1	
11+03.17, 37.25 RT													1	
11+42, 28' RT													1	
11+91.08, 22.08' RT													1	
12+18.92, 16.42' RT													1	
12+62.92, 16.17' RT													1	
13+10.67, 13.17' RT													1	
13+59.25, 6.58' RT													1	
14+02.58, 10.25' RT													1	
14+44.75, 14.25' RT													1	
14+79.83, 13.50' RT													1	
15+32.58, 7.50' RT													1	
11+44, 143' RT													1	
12+03, 144' RT													1	
12+53, 153' RT													1	
12+92, 137' RT													1	
13+39, 145' RT													1	
13+97**., 121' RT													1	
14+36, 136' RT													1	
14+53**., 129' RT													1	
15+08, 172' RT													1	
15+68, 166' RT													1	
16+19*, 149' RT													1	
16+57, 130' RT													1	
PIERRE MENARD HOME	385	70	150	460	270	435	650				1			1
50+15.83, 170.33 LT												2		
51+49.50, 28.25' LT												1		
52+02.67, 32.83' LT												1		
52+69.25, 175.08' LT												2		
TOTAL =	385	70	150	460	270	435	3230	2810	772	10914	1	6	24	1

REMOVAL ITEMS						
LOCATION (STATION TO STATION)	TREE REMOV 6 TO 15	TREE REMOV OVER 15	CURB REMOVAL (SPL)	SIDEWALK REM	SIDEWALK REM (SPECIAL)	PIPE CULVERT REMOV
	(UNIT)	(UNIT)	(FOOT)	(SQ FT)	(SQ FT)	(FOOT)
CAMPGROUND AREA ADA PAD	10	20		25		
MENARD HOME						
STA. 49+52, 39' LT TO 51+74, 33' LT					815	
STA. 51+63, 29' LT TO 51+93, 15' LT					170	
STA. 51+74, 33' LT TO 51+73, 78' LT					312	
STA. 51+47, 10' RT TO 52+16, 9' RT			206			71
STA. 51+63, 29' LT TO 51+93, 15' LT						30
TOTAL =	10	20	206	25	1297	101

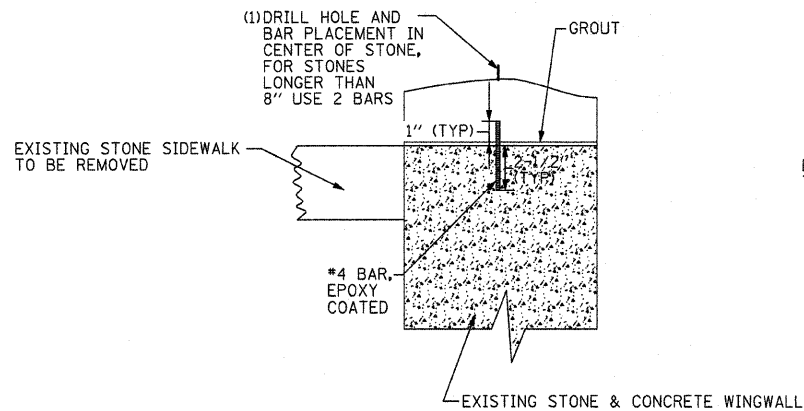
SEEDING SCHEDULE								
LOCATION (STATION TO STATION)	TOPSOIL F & P VAR DP	GRADING & SHAP DITCH	SEEDING CL 1	NITROGEN FERT NUTR	PHOSPHORUS FERT NUTR	POTASSIUM FERT NUTR	AGR GROUND LIMESTONE	MULCH METHOD 2
	(SQ YD)	(FOOT)	(ACRE)	(LBS.)	(LBS.)	(LBS.)	(TON)	(ACRE)
MENARD HOME								
STA. 49+30, 35' LT TO 51+22, 88' LT	122							
STA. 49+52, 39' LT TO 51+74, 33' LT	91							
STA. 51+63, 29' LT TO 51+93, 15' LT	19							
STA. 51+73, 78' LT TO 51+78, 30' LT	35							
STA. 51+41, 9' RT TO 52+21, 10' RT		80						
STA. 51+59, 18' LT TO 52+02, 17' LT		43						
ENTIRE SITE			0.19	17	17	17	0.38	0.19
FORT KASKASKIA CAMPGROUND ENTIRE SITE			0.11	10	10	10	0.22	0.11
TOTAL =	267	123	0.30	27	27	27	0.60	0.30

FILE NAME =	USER NAME = #USER#	DESIGNED - T.T.P.	REVISED - 7/8/09	STATE OF ILLINOIS DEPARTMENT OF TRANSPORTATION	SCHEDULE OF QUANTITIES PIERRE MENARD/FORT KASKASKIA STATE HISTORIC SITES			F.A. RTE.	SECTION	COUNTY	TOTAL SHEETS	SHEET NO.
#FILE#		DRAWN - S.D.K.	REVISED - 8/24/09		SCALE:	SHEET NO. 3 OF 16 SHEETS	STA.	TO STA.	RANDOLPH	16	3	
		CHECKED - R.H.D.	REVISED -					CONTRACT NO. 46003				
		DATE - 2/3/09	REVISED -					FED. ROAD DIST. NO. ILLINOIS		FED. AID PROJECT		

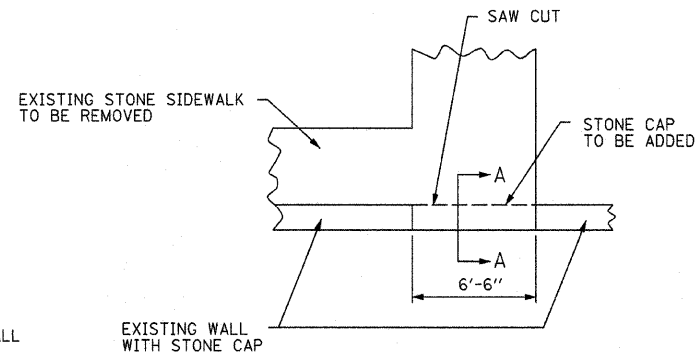
MIXTURES USE(S):	BITUMINOUS SURFACE
AC/PG	PG 64-22
RAP% (MAX)	10%
DESIGN AIR VOIDS	4.0% @ N DESIGN 70
MIX COMP	IL 9.5
FRICTION AGG.	MIX C

PRIME APPLICATION RATES	
BIT MATLS PR CT	AGG PRIME COAT
0.375 GAL/SQ YD	5 LB/SQ YD

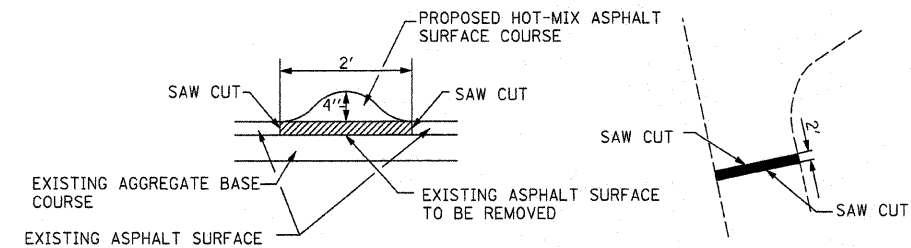
MIXES AND APPLICATION RATE TABLES



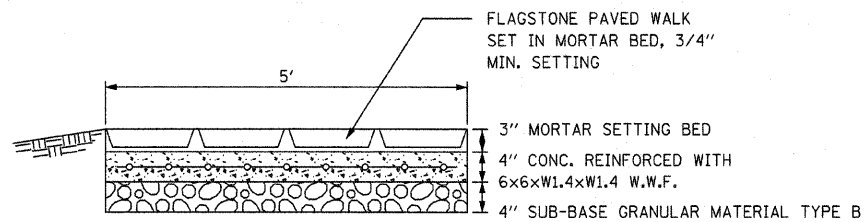
STONE CAP SECTION A-A NOT TO SCALE



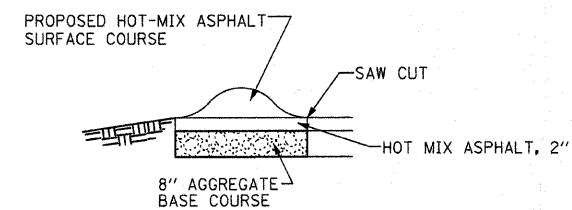
PLAN VIEW OF STONE WALL NOT TO SCALE



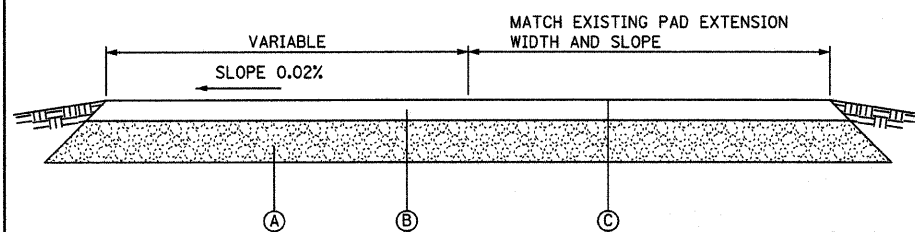
SPEED BUMP DETAIL NOT TO SCALE



PORTLAND CEMENT CONCRETE SIDEWALK SPECIAL

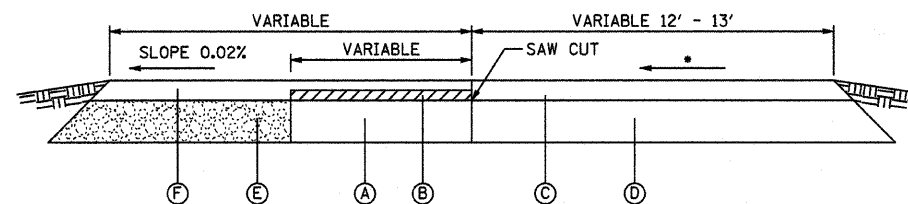


CAMPGROUND ROAD



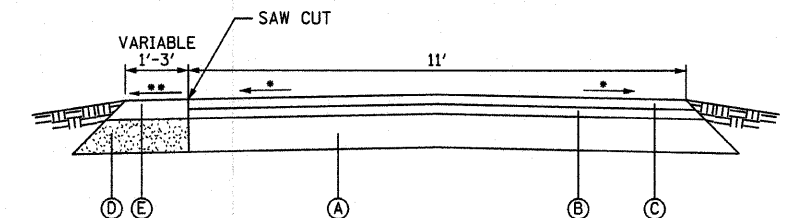
- A PROPOSED 8" AGGREGATE BASE COURSE TYPE B
- B PROPOSED HOT-MIX ASPHALT SURFACE COURSE, MIX C, N 70, 2"
- C MATCH EXISTING CAMPER PAD WIDTH & SLOPE

EXTENSIONS OF CAMPER PADS AND PICNIC AREA



- SLOPE VARIES
- A EXISTING AGGREGATE PICNIC AREA
- B EXISTING AGGREGATE PICNIC AREA TO BE REMOVED
- C EXISTING HOT-MIX ASPHALT SURFACE COURSE
- D EXISTING AGGREGATE BASE COURSE
- E PROPOSED 8" AGGREGATE BASE COURSE TYPE B
- F PROPOSED HOT-MIX ASPHALT SURFACE COURSE, MIX C, N70, 2"

WIDENING OF PICNIC AREAS AT EXISTING CAMPER PAD AREA



- SLOPE VARIES
- SLOPE TO MATCH EXISTING ROAD
- A EXISTING AGGREGATE BASE COURSE
- B EXISTING HOT-MIX ASPHALT BINDER COURSE 1/2"
- C EXISTING HOT-MIX ASPHALT SURFACE COURSE 1/2"
- D PROPOSED 8" AGGREGATE BASE COURSE TYPE B
- E PROPOSED HOT-MIX ASPHALT SURFACE COURSE, MIX C, N 70, 3"

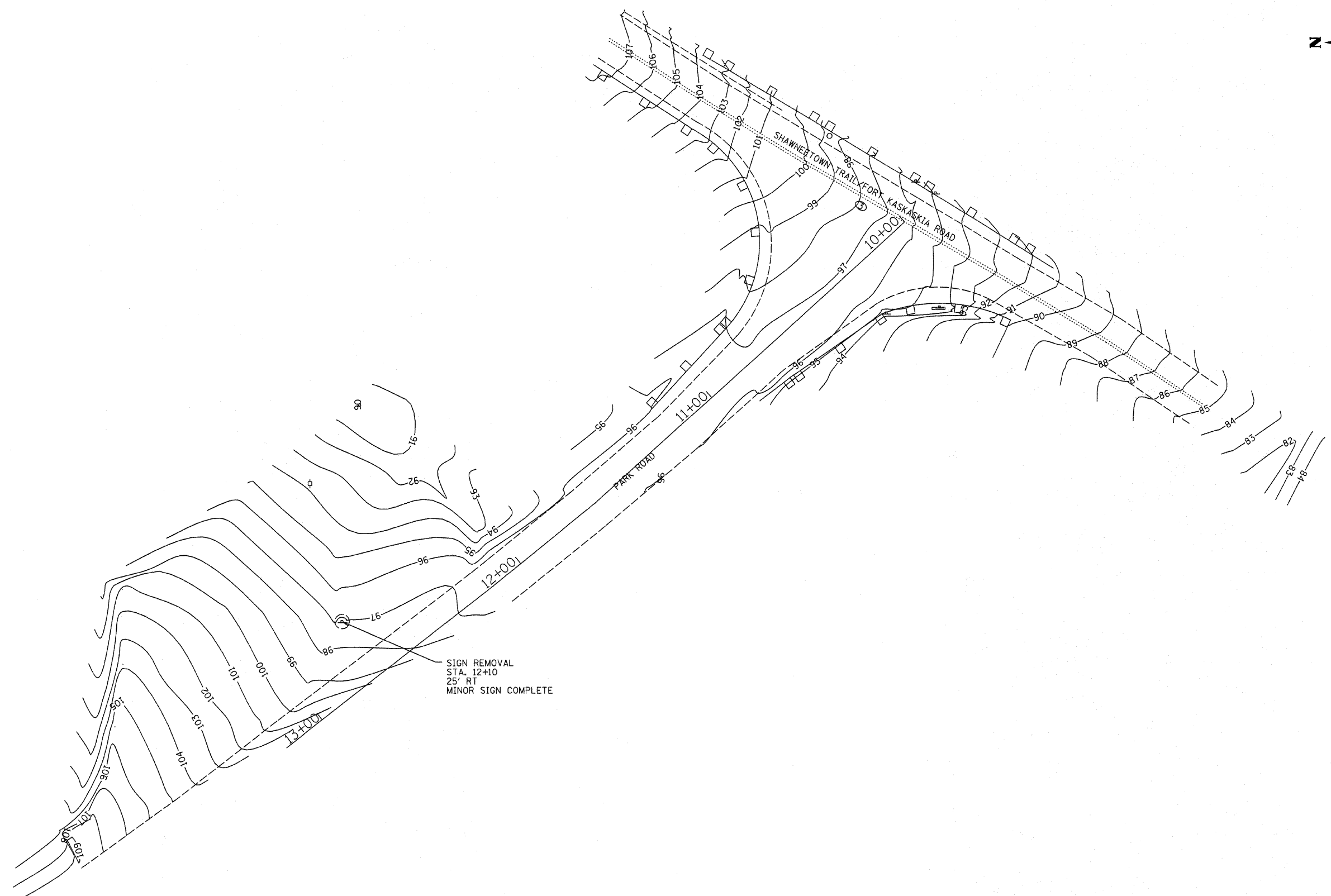
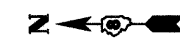
FILE NAME =	USER NAME = #USER#	DESIGNED - R.H.D.	REVISED - 8/24/09
#FILEL#		DRAWN - J.H.F.	REVISED -
	PLOT SCALE = #SCALE#	CHECKED - T.T.P.	REVISED -
	PLOT DATE = #DATE#	DATE - 8/1/08	REVISED -

STATE OF ILLINOIS
DEPARTMENT OF TRANSPORTATION

TYPICAL SECTIONS
PIERRE MENARD/FORT KASKASKIA STATE HISTORIC SITES

F.A. RTE.	SECTION	COUNTY	TOTAL SHEETS	SHEET NO.
		RANDOLPH	16	4
FED. ROAD DIST. NO. ILLINOIS FED. AID PROJECT			CONTRACT NO. 46003	

SCALE: 1"=20' SHEET NO. 4 OF 17 SHEETS STA. TO STA.



SIGN REMOVAL
 STA. 12+10
 25' RT
 MINOR SIGN COMPLETE

FILE NAME =
 #FILEL#

USER NAME = #USER#
 PLOT SCALE = #SCALE#
 PLOT DATE = #DATE#

DESIGNED - B.H.D.
 DRAWN - J.H.F.
 CHECKED - T.T.P.
 DATE - 6/13/08

REVISED -
 REVISED -
 REVISED -
 REVISED -

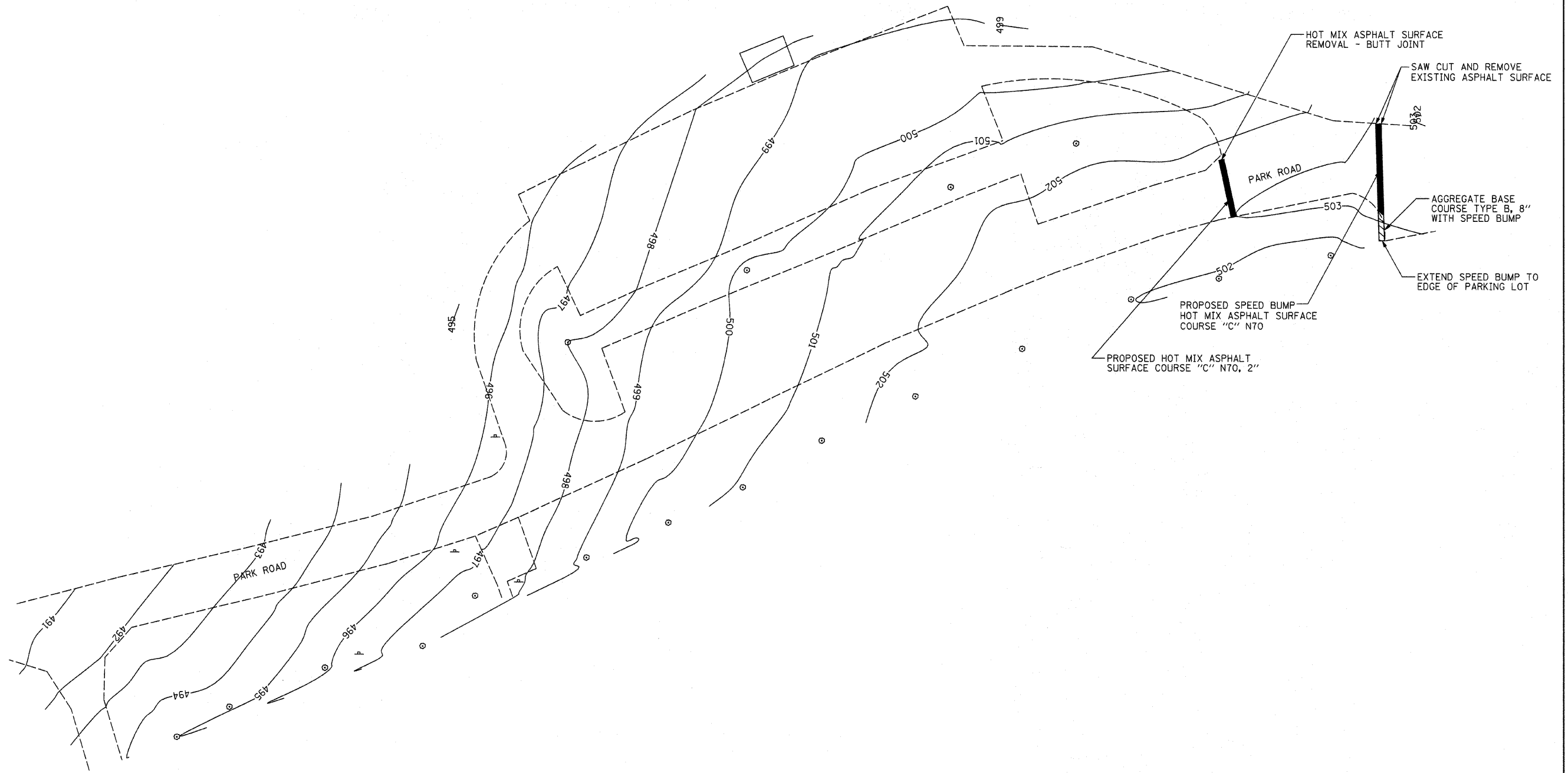
**STATE OF ILLINOIS
 DEPARTMENT OF TRANSPORTATION**

**FORT KASKASKIA SITE ENTRANCE SIGN
 PIERRE MENARD/FORT KASKASKIA STATE HISTORIC SITES**

F.A. RTE.	SECTION	COUNTY	TOTAL SHEETS	SHEET NO.
		RANDOLPH	16	5
CONTRACT NO. 46003				
FED. ROAD DIST. NO.		ILLINOIS FED. AID PROJECT		

SCALE: 1"=20' SHEET NO. 5 OF 16 SHEETS STA. TO STA.

HOT MIX ASPHALT SURFACE
 COURSE "C" N70 2"
 WITH AGGREGATE BASE
 COURSE, TYPE B 8"



FILE NAME =	USER NAME = #USER#	DESIGNED - R.H.D.	REVISED -
#FILEL#		DRAWN - J.H.F.	REVISED -
	PLOT SCALE = #SCALE#	CHECKED - T.T.P.	REVISED -
	PLOT DATE = #DATE#	DATE - 6/13/08	REVISED -

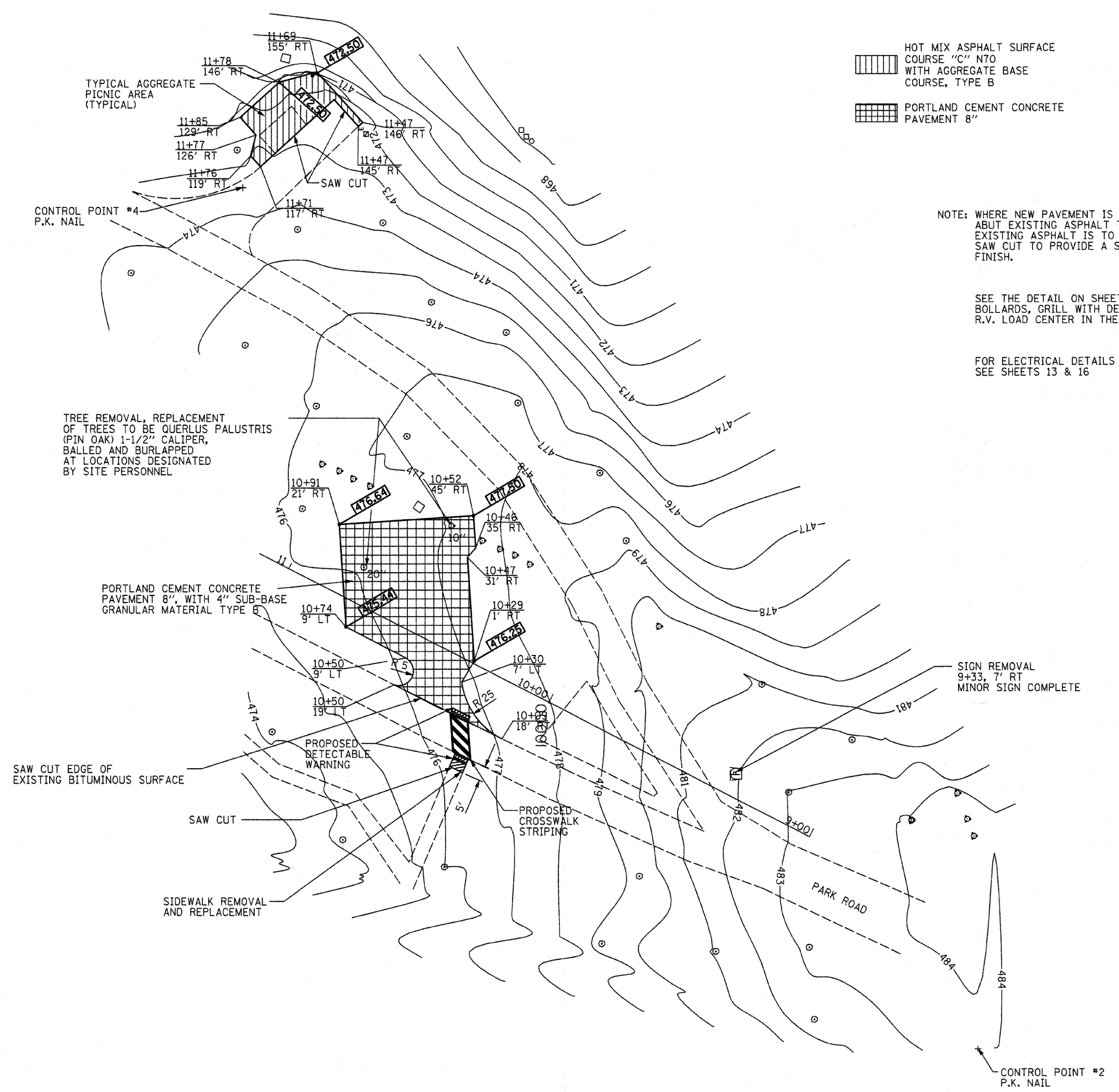
**STATE OF ILLINOIS
 DEPARTMENT OF TRANSPORTATION**

**FORT KASKASKIA PLAYGROUND AREA SPEED BUMP
 PIERRE MENARD/FORT KASKASKIA STATE HISTORIC SITES**

SCALE: 1"=20' SHEET NO. 6 OF 16 SHEETS STA. TO STA.

F.A. RTE.	SECTION	COUNTY	TOTAL SHEETS	SHEET NO.
		RANDOLPH	16	6
FED. ROAD DIST. NO.		ILLINOIS FED. AID PROJECT		
		CONTRACT NO. 46003		

JOB NO. 250-061-H VASCONCELLES ENGINEERING CORP. DESIGN FIRM REGISTRATION NUMBER 184-002107



HOT MIX ASPHALT SURFACE
 COURSE "C" N70
 WITH AGGREGATE BASE
 COURSE, TYPE B

PORTLAND CEMENT CONCRETE
 PAVEMENT 8"



NOTE: WHERE NEW PAVEMENT IS TO
 ABUT EXISTING ASPHALT THE
 EXISTING ASPHALT IS TO BE
 SAW CUT TO PROVIDE A SMOOTH
 FINISH.

SEE THE DETAIL ON SHEET 12 FOR THE LOCATION OF THE
 BOLLARDS, GRILL WITH DETECTABLE WARNINGS, STRIPING, AND
 R.V. LOAD CENTER IN THE CONCRETE PAVEMENT AREA

FOR ELECTRICAL DETAILS
 SEE SHEETS 13 & 16

TYPICAL AGGREGATE
 PICNIC AREA
 (TYPICAL)

TREE REMOVAL, REPLACEMENT
 OF TREES TO BE QUERULUS PALUSTRIS
 (PIN OAK) 1-1/2" CALIPER,
 BALLED AND BURLAPPED
 AT LOCATIONS DESIGNATED
 BY SITE PERSONNEL

PORTLAND CEMENT CONCRETE
 PAVEMENT 8", WITH 4" SUB-BASE
 GRANULAR MATERIAL TYPE B

SIGN REMOVAL
 9+33, 7' RT
 MINOR SIGN COMPLETE

SAW CUT EDGE OF
 EXISTING BITUMINOUS SURFACE

SAW CUT

SIDEWALK REMOVAL
 AND REPLACEMENT

PROPOSED
 DETECTABLE
 WARNING

PROPOSED
 CROSSWALK
 STRIPING

V.E.C. CONTROL POINT #2
 N: 475131.84
 E: 2370184.50

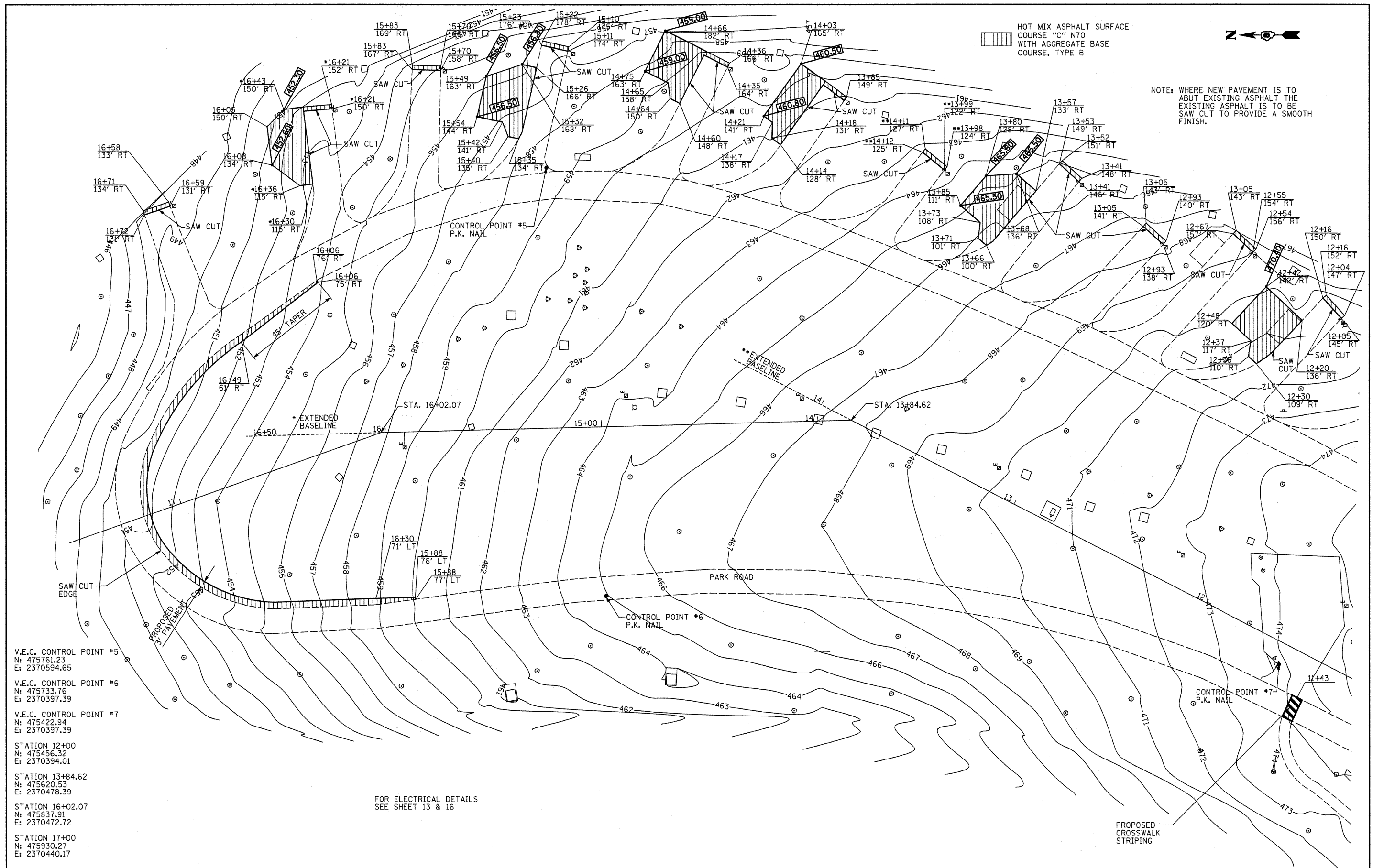
V.E.C. CONTROL POINT #4
 N: 475382.99
 E: 2370477.96

STATION 10+00
 N: 475278.44
 E: 2370302.59

STATION 11+00
 N: 475367.38
 E: 2370348.30

FILE NAME = #FILEL#	USER NAME = #USER#	DESIGNED - R.H.D.	REVISED -	STATE OF ILLINOIS DEPARTMENT OF TRANSPORTATION	FORT KASKASKIA CAMPGROUND ENTRANCE PIERRE MENARD/FORT KASKASKIA STATE HISTORIC SITES		F.A. RTE.	SECTION	COUNTY	TOTAL SHEETS	SHEET NO.
		DRAWN - J.H.F.	REVISED -		SCALE: 1"=20'	SHEET NO. 7 OF 16 SHEETS	STA.	TO STA.	RANDOLPH	16	7
		CHECKED - T.T.P.	REVISED -						CONTRACT NO. 46003		
		DATE - 6/13/08	REVISED -						FED. ROAD DIST. NO. ILLINOIS FED. AID PROJECT		

JOB NO. 250-061-H VASCONCELLES ENGINEERING CORP. DESIGN FIRM REGISTRATION NUMBER 184-002107



HOT MIX ASPHALT SURFACE COURSE "C" N70 WITH AGGREGATE BASE COURSE, TYPE B



NOTE: WHERE NEW PAVEMENT IS TO ABUT EXISTING ASPHALT THE EXISTING ASPHALT IS TO BE SAW CUT TO PROVIDE A SMOOTH FINISH.

V.E.C. CONTROL POINT #5
 N: 475761.23
 E: 2370594.65

V.E.C. CONTROL POINT #6
 N: 475733.76
 E: 2370397.39

V.E.C. CONTROL POINT #7
 N: 475422.94
 E: 2370397.39

STATION 12+00
 N: 475456.32
 E: 2370394.01

STATION 13+84.62
 N: 475620.53
 E: 2370478.39

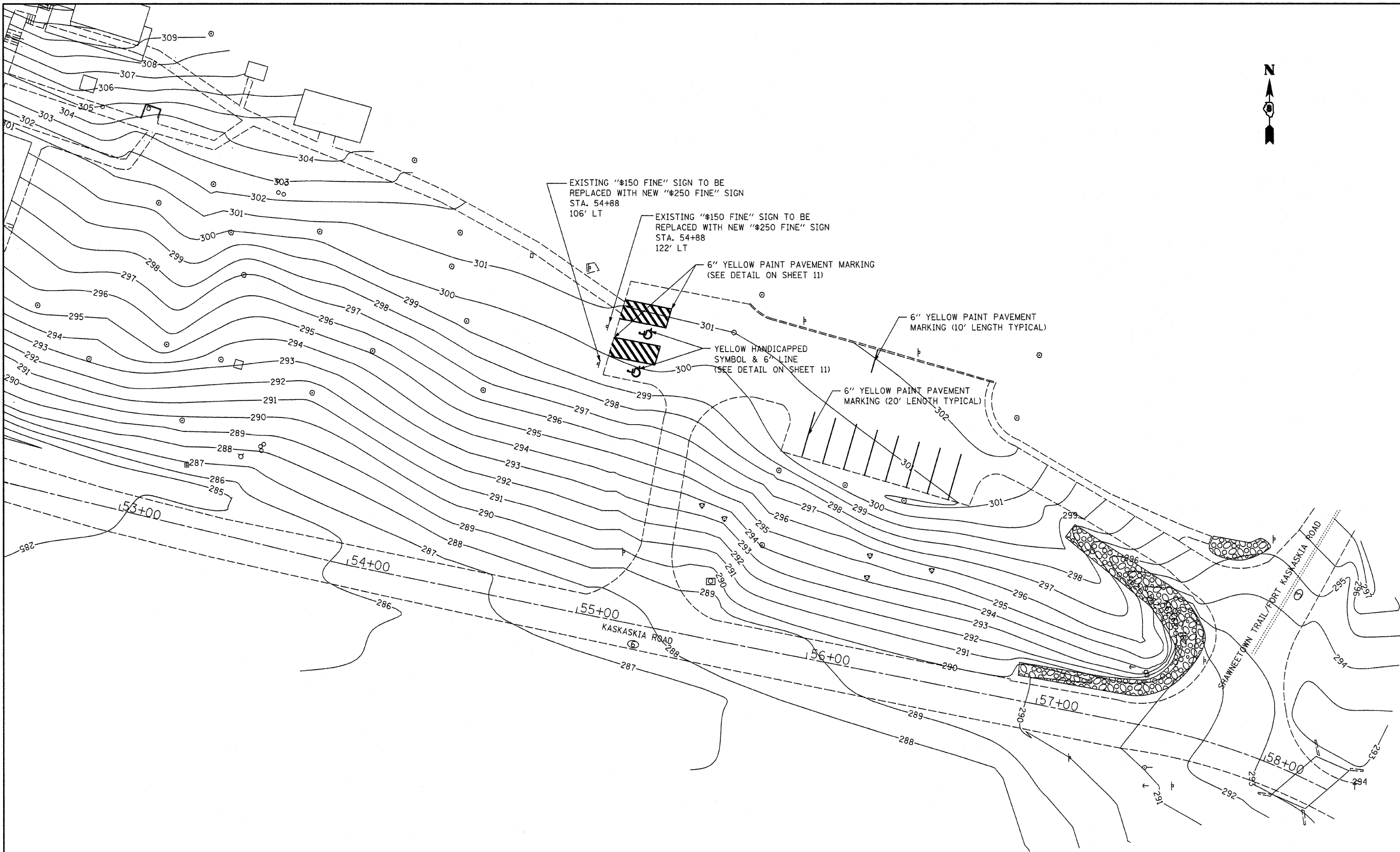
STATION 16+02.07
 N: 475837.91
 E: 2370472.72

STATION 17+00
 N: 475930.27
 E: 2370440.17

FOR ELECTRICAL DETAILS SEE SHEET 13 & 16

FILE NAME =	USER NAME = #USER#	DESIGNED R.H.D.	REVISED -	STATE OF ILLINOIS DEPARTMENT OF TRANSPORTATION	FORT KASKASKIA CAMPGROUND PIERRE MENARD/FORT KASKASKIA STATE HISTORIC SITES			F.A. RTE.	SECTION	COUNTY	TOTAL SHEETS	SHEET NO.
#FILE#		DRAWN J.H.F.	REVISED -		SCALE: 1"=20'	SHEET NO. 8 OF 16 SHEETS	STA.	TO STA.	RANDOLPH	16	8	
		CHECKED T.T.P.	REVISED -						CONTRACT NO. 46003			
		DATE 6/13/08	REVISED -						ILLINOIS FED. AID PROJECT			

JOB NO. 250-061-H VASCELLES ENGINEERING CORP. DESIGN FIRM REGISTRATION NUMBER 184-002107



FILE NAME = #FILEL#	USER NAME = #USER#	DESIGNED - R.H.D.	REVISED -	STATE OF ILLINOIS DEPARTMENT OF TRANSPORTATION	PIERRE MENARD EAST PARKING LOT RESTRIPIING PIERRE MENARD/FORT KASKASKIA STATE HISTORIC SITES			F.A. RTE.	SECTION	COUNTY	TOTAL SHEETS	SHEET NO.
	PLOT SCALE = #SCALE#	DRAWN - J.H.F.	REVISED -		SCALE: 1"=20'	SHEET NO. 9 OF 16 SHEETS	STA.	TO STA.	RANDOLPH	16	9	
	PLOT DATE = #DATE#	CHECKED - T.T.P.	REVISED -						CONTRACT NO. 46003			
		DATE - 6/13/08	REVISED -						ILLINOIS FED. AID PROJECT			

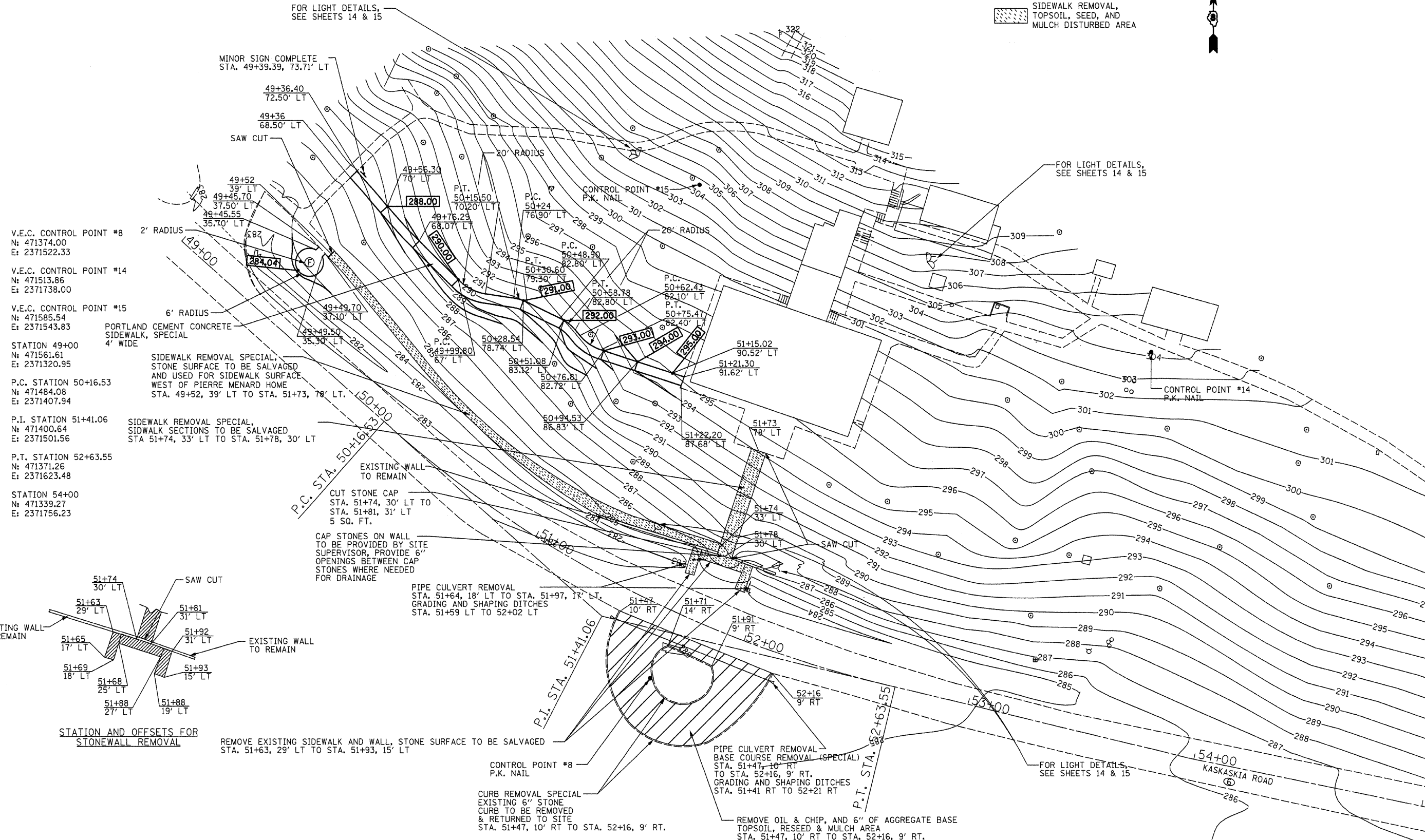


SIDWALK REMOVAL, TOPSOIL, SEED, AND MULCH DISTURBED AREA

FOR LIGHT DETAILS, SEE SHEETS 14 & 15

FOR LIGHT DETAILS, SEE SHEETS 14 & 15

FOR LIGHT DETAILS, SEE SHEETS 14 & 15



- V.E.C. CONTROL POINT #8
N: 471374.00
E: 2371522.33
- V.E.C. CONTROL POINT #14
N: 471513.86
E: 2371738.00
- V.E.C. CONTROL POINT #15
N: 471585.54
E: 2371543.83
- STATION 49+00
N: 471561.61
E: 2371320.95
- P.C. STATION 50+16.53
N: 471484.08
E: 2371407.94
- P.I. STATION 51+41.06
N: 471400.64
E: 2371501.56
- P.T. STATION 52+63.55
N: 471371.26
E: 2371623.48
- STATION 54+00
N: 471339.27
E: 2371756.23

PORTLAND CEMENT CONCRETE SIDEWALK, SPECIAL 4' WIDE

SIDWALK REMOVAL SPECIAL, STONE SURFACE TO BE SALVAGED AND USED FOR SIDEWALK SURFACE WEST OF PIERRE MENARD HOME STA. 49+52, 39' LT TO STA. 51+73, 78' LT.

SIDWALK REMOVAL SPECIAL, SIDEWALK SECTIONS TO BE SALVAGED STA 51+74, 33' LT TO STA. 51+78, 30' LT

EXISTING WALL TO REMAIN

CUT STONE CAP STA. 51+74, 30' LT TO STA. 51+81, 31' LT 5 SQ. FT.

CAP STONES ON WALL TO BE PROVIDED BY SITE SUPERVISOR, PROVIDE 6" OPENINGS BETWEEN CAP STONES WHERE NEEDED FOR DRAINAGE

PIPE CULVERT REMOVAL STA. 51+64, 18' LT TO STA. 51+97, 17' LT. GRADING AND SHAPING DITCHES STA. 51+59 LT TO 52+02 LT

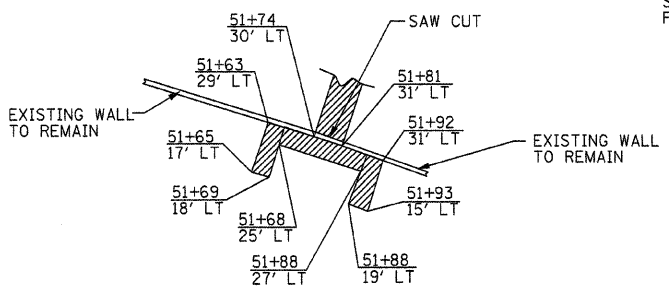
REMOVE EXISTING SIDEWALK AND WALL, STONE SURFACE TO BE SALVAGED STA. 51+63, 29' LT TO STA. 51+93, 15' LT

CONTROL POINT #8 P.K. NAIL

CURB REMOVAL SPECIAL EXISTING 6" STONE CURB TO BE REMOVED & RETURNED TO SITE STA. 51+47, 10' RT TO STA. 52+16, 9' RT.

PIPE CULVERT REMOVAL - BASE COURSE REMOVAL (SPECIAL) STA. 51+47, 10' RT TO STA. 52+16, 9' RT. GRADING AND SHAPING DITCHES STA. 51+41 RT TO 52+21 RT

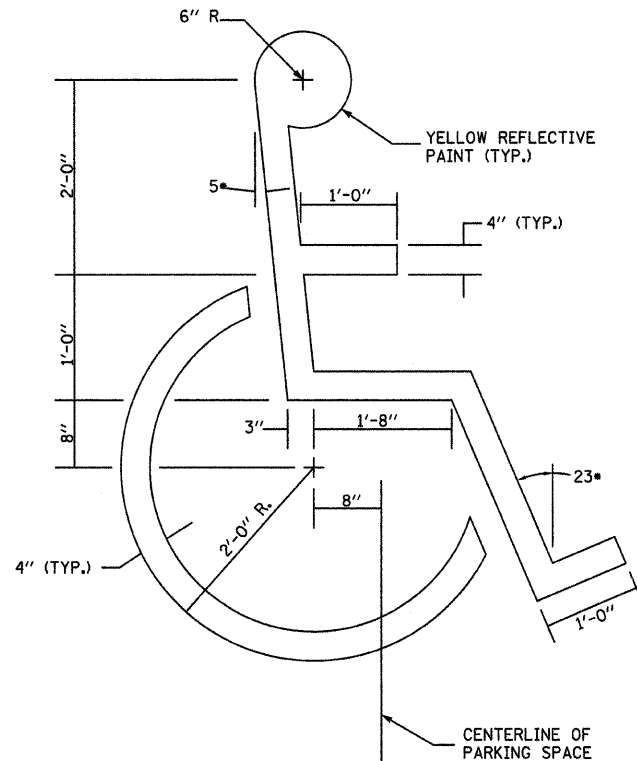
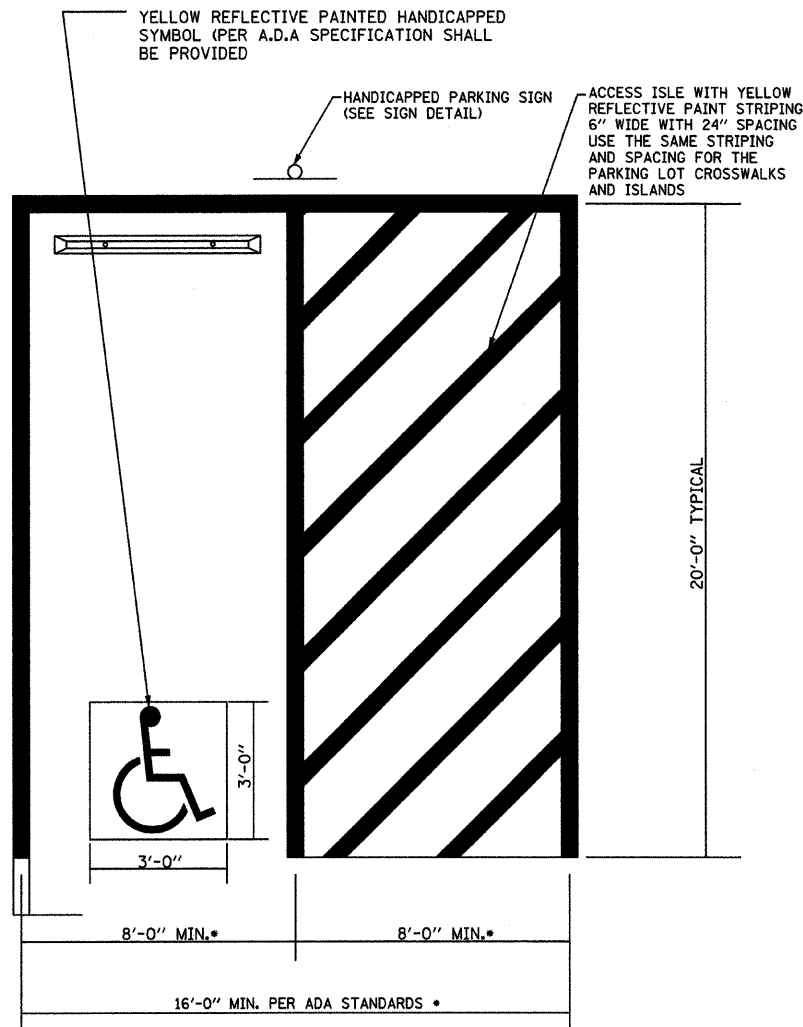
REMOVE OIL & CHIP, AND 6" OF AGGREGATE BASE TOPSOIL, RESEED & MULCH AREA STA. 51+47, 10' RT TO STA. 52+16, 9' RT.



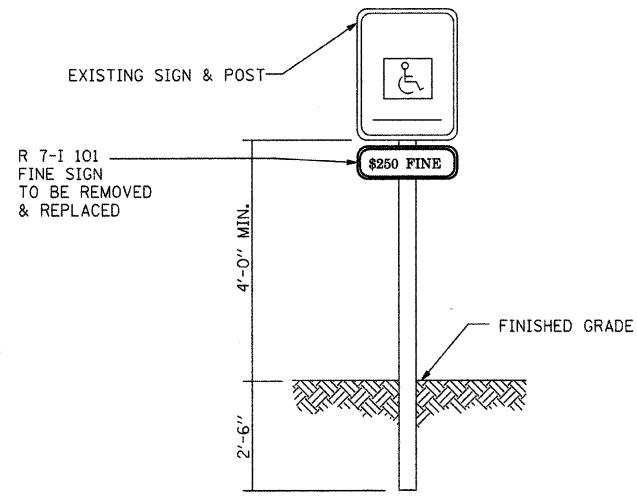
STATION AND OFFSETS FOR STONEWALL REMOVAL

FILE NAME =	USER NAME = #USER#	DESIGNED - R.H.D.	REVISED - 8/24/09	STATE OF ILLINOIS DEPARTMENT OF TRANSPORTATION		PIERRE MENARD HOME		F.A. RTE.	SECTION	COUNTY	TOTAL SHEETS	SHEET NO.
#FILE#		DRAWN - J.H.F.	REVISED -			PIERRE MENARD/FORT KASKASKIA STATE HISTORIC SITES						16
	PLOT SCALE = #SCALE#	CHECKED - T.T.P.	REVISED -			SCALE: 1"=20'	SHEET NO. 10 OF 16 SHEETS	STA.	TO STA.	CONTRACT NO. 46003		
	PLOT DATE = #DATE#	DATE - 8/1/08	REVISED -					FED. ROAD DIST. NO. ILLINOIS FED. AID PROJECT				

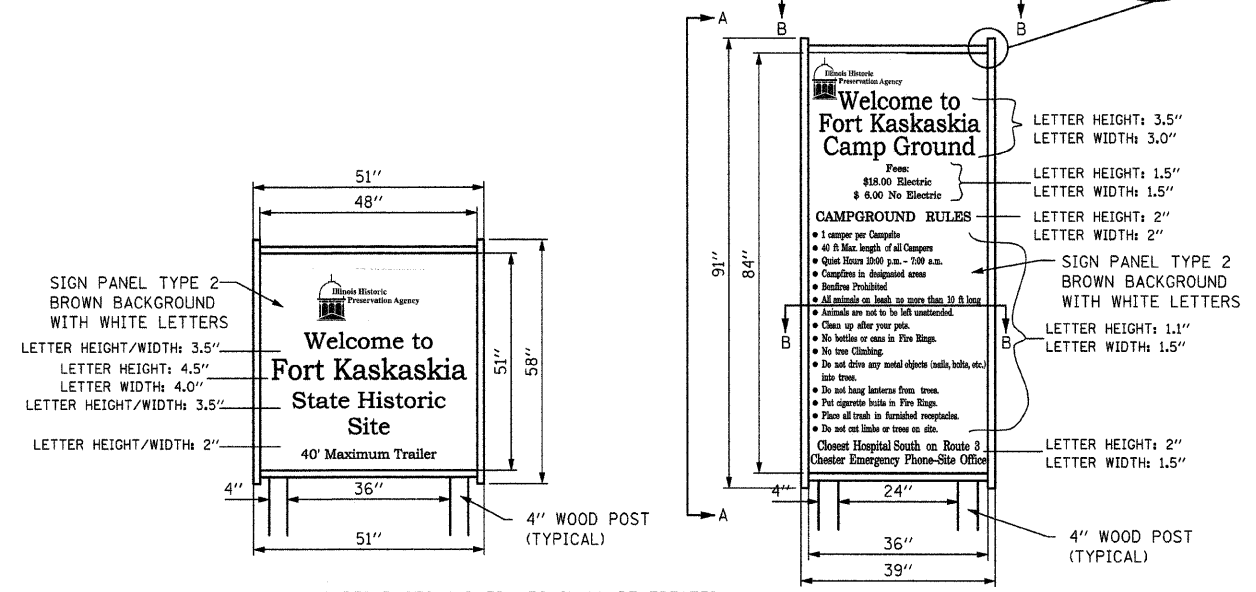
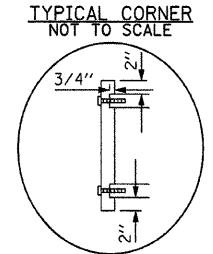
JOB NO. 250-061-H VASCONCELLES ENGINEERING CORP. DESIGN FIRM REGISTRATION NUMBER 184-002107



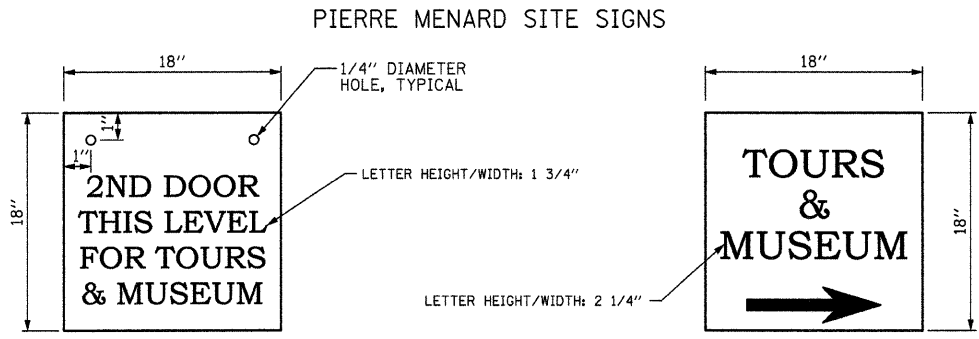
HANDICAPPED SYMBOL LAYOUT DETAIL
NOT TO SCALE



HANDICAPPED PARKING SIGNS
NOT TO SCALE



FORT KASKASKIA SIGN DETAILS
NOT TO SCALE

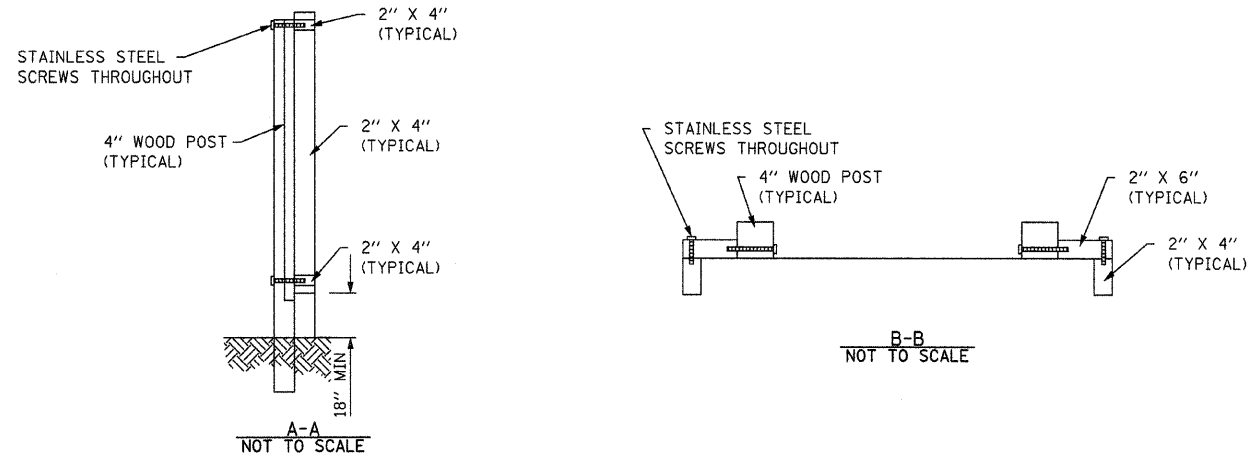


PIERRE MENARD HOME SIGN
NOT TO SCALE

SIGN - STATION 49+39
NOT TO SCALE

SIGN COLORING TO MATCH EXISTING SIGNS AT SITE.

SHOW LAYOUT OF SIGN FOR APPROVAL FROM SITE ADMINISTRATOR PRIOR TO FABRICATION



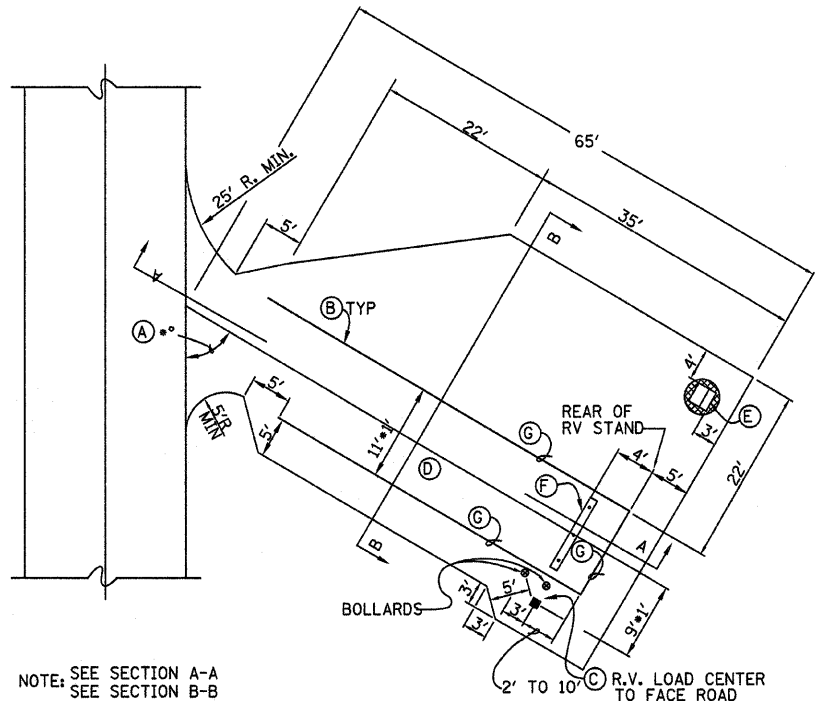
FILE NAME =	USER NAME = #USER#	DESIGNED - T.T.P.	REVISED - 8/24/09
#FILE#		DRAWN - S.D.K.	REVISED -
	PLOT SCALE = #SCALE#	CHECKED - R.H.D.	REVISED -
	PLOT DATE = #DATE#	DATE - 8/1/08	REVISED -

STATE OF ILLINOIS
DEPARTMENT OF TRANSPORTATION

DETAILS			
PIERRE MENARD/FORT KASKASKIA STATE HISTORIC SITES			
SCALE:	SHEET NO. 11 OF 16 SHEETS	STA.	TO STA.

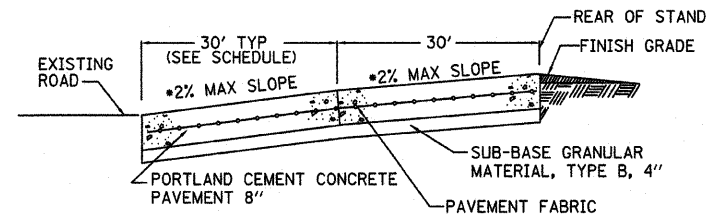
F.A. RTE.	SECTION	COUNTY	TOTAL SHEETS	SHEET NO.
		RANDOLPH	16	11
CONTRACT NO. 46003				
FED. ROAD DIST. NO.		ILLINOIS FED. AID PROJECT		

- (A) ANGLE • = 60° EXCEPT AS SHOWN ON ROAD CONSTRUCTION PLAN.
- (B) ALL R.V. SITE PADS SHALL HAVE NO MORE THAN 2% SLOPE ON REAR 30 FEET AND 2% ON REMAINING LENGTH.
- (C) CONTRACTOR SHALL COORDINATE THEIR WORK FOR R.V. PEDESTAL LOCATION RELATIVE TO CAP PAD CENTERLINE AND REAR OF THE R.V. STAND ACCORDING TO THESE DWG. AND NEC 551-76c
- (D) NO R.V. SITE PAD SHALL BE CLOSER THAN 10' FROM ANY OTHER ONE.
- (E) GRILL (BLACK)
- (F) RESET BUMPER BLOCKS (TIMBER) TO BE INSTALLED AS SHOWN. SECURE TO CAMP PAD WITH 3/4" REBAR 36" LONG, SINK REBAR 1" BELOW TOP OF BUMPER. 3 REQUIRED PER BUMPER AT 3'-6" CENTERS.
- (G) DESIGNATED R.V. PARKING PAD AREA WITH A 6" WIDE PAINTED YELLOW LINE.

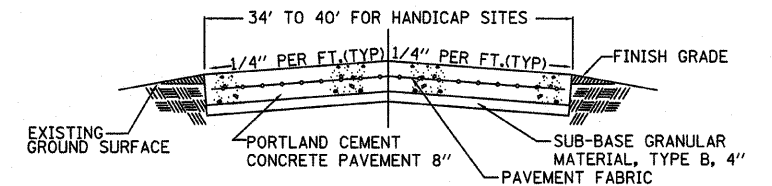


NOTE: SEE SECTION A-A
SEE SECTION B-B

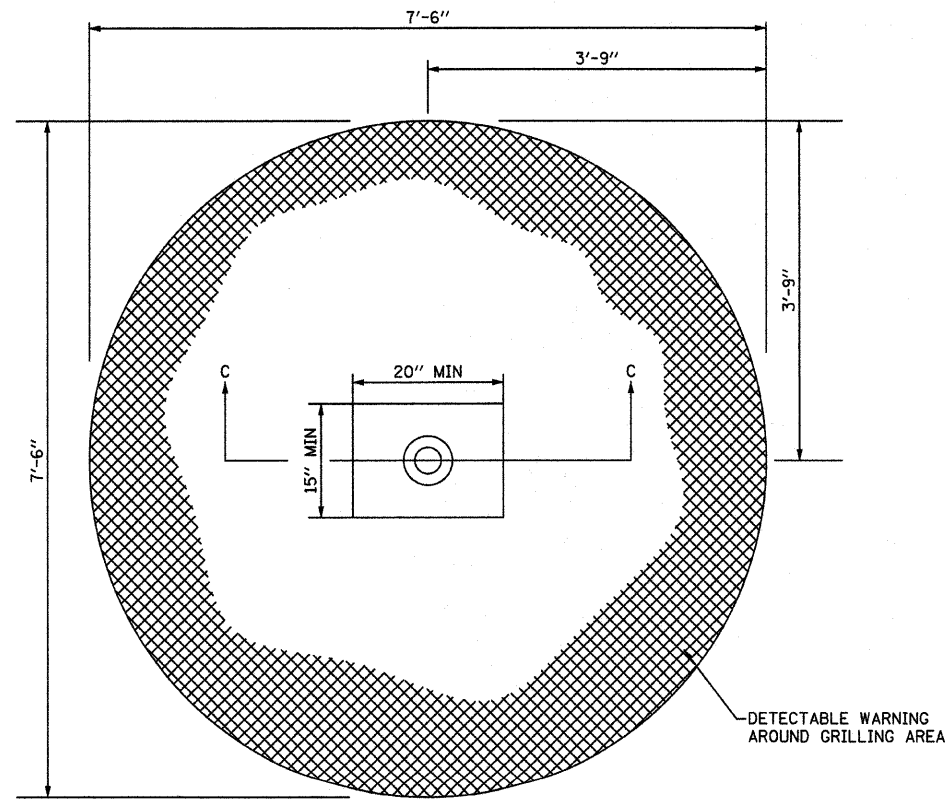
TYPICAL HANDICAP BACK IN CAMPSITE
NOT TO SCALE



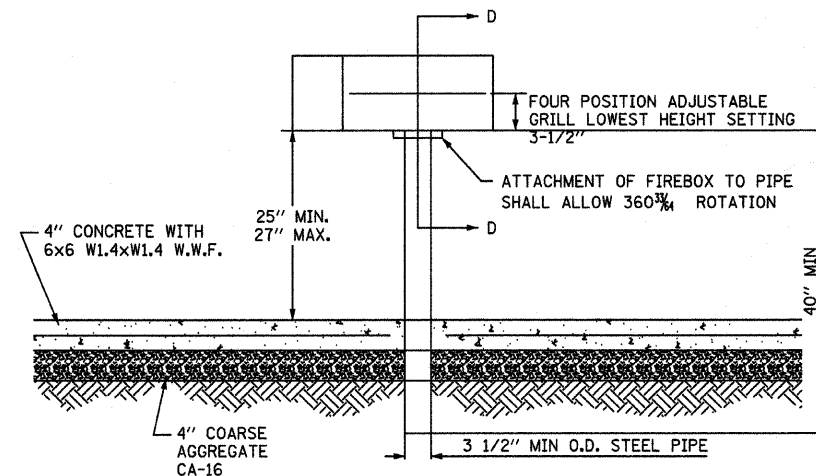
SECTION A-A (NEW CONSTRUCTION)
NOT TO SCALE



SECTION B-B (NEW CONSTRUCTION)
NOT TO SCALE



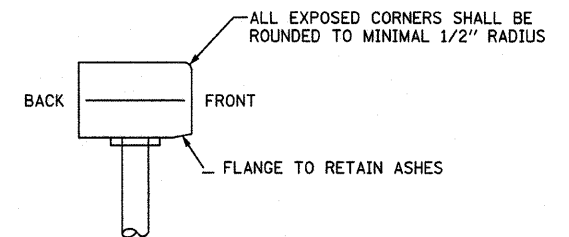
GRILL AREA
NOT TO SCALE



SECTION C-C
NOT TO SCALE

THE COOKING GRATE, 300 SQUARE INCHES MINIMUM, SHALL BE CONSTRUCTED OF 1/2" OR LARGER DIAMETER A-36 STEEL BARS ON 1-1/8" CENTERS.

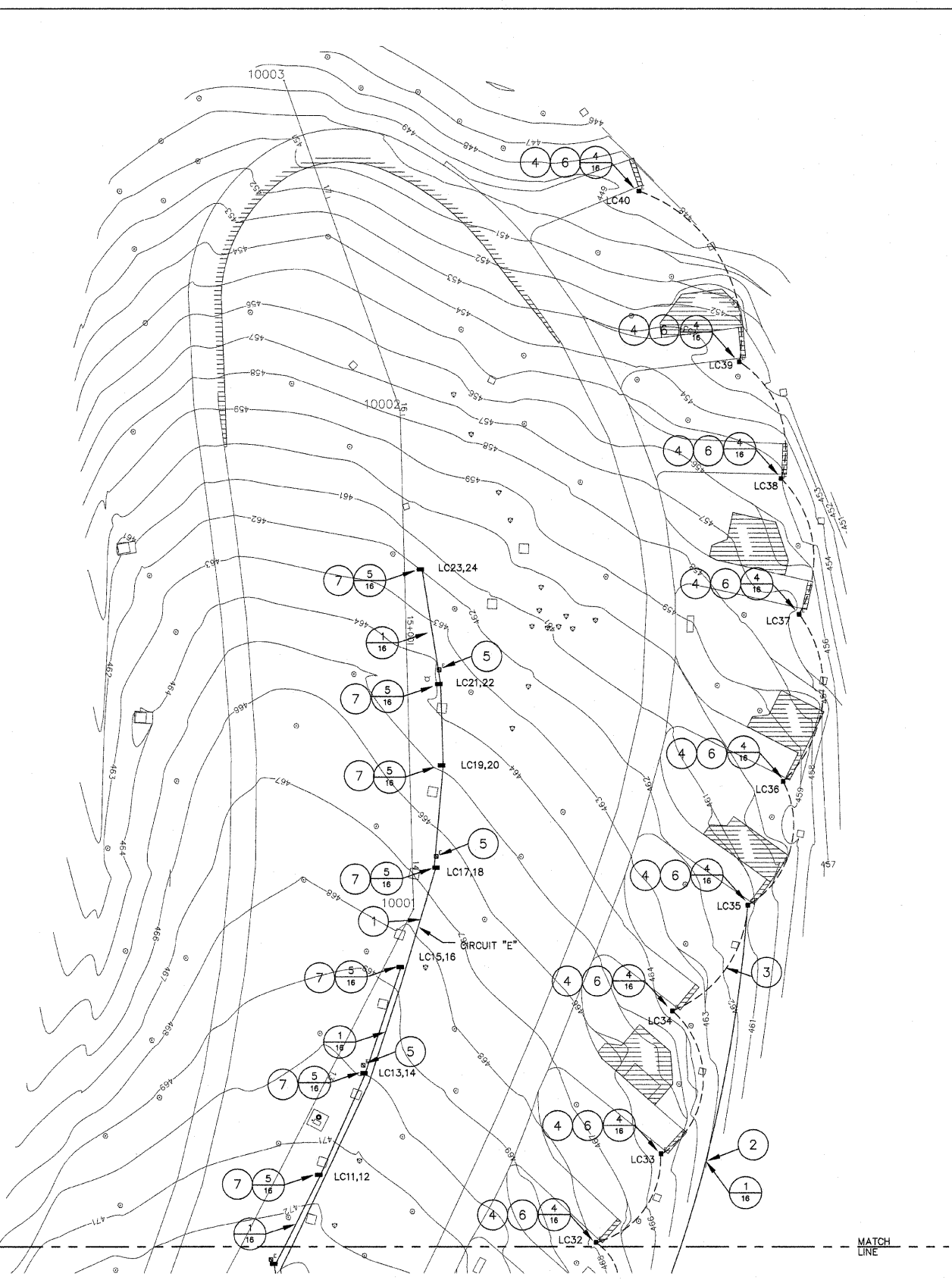
ALL CONNECTIONS, HARDWARE, AND ANCHORING SHALL BE IN ACCORDANCE WITH THE MANUFACTURER'S RECOMMENDATIONS.



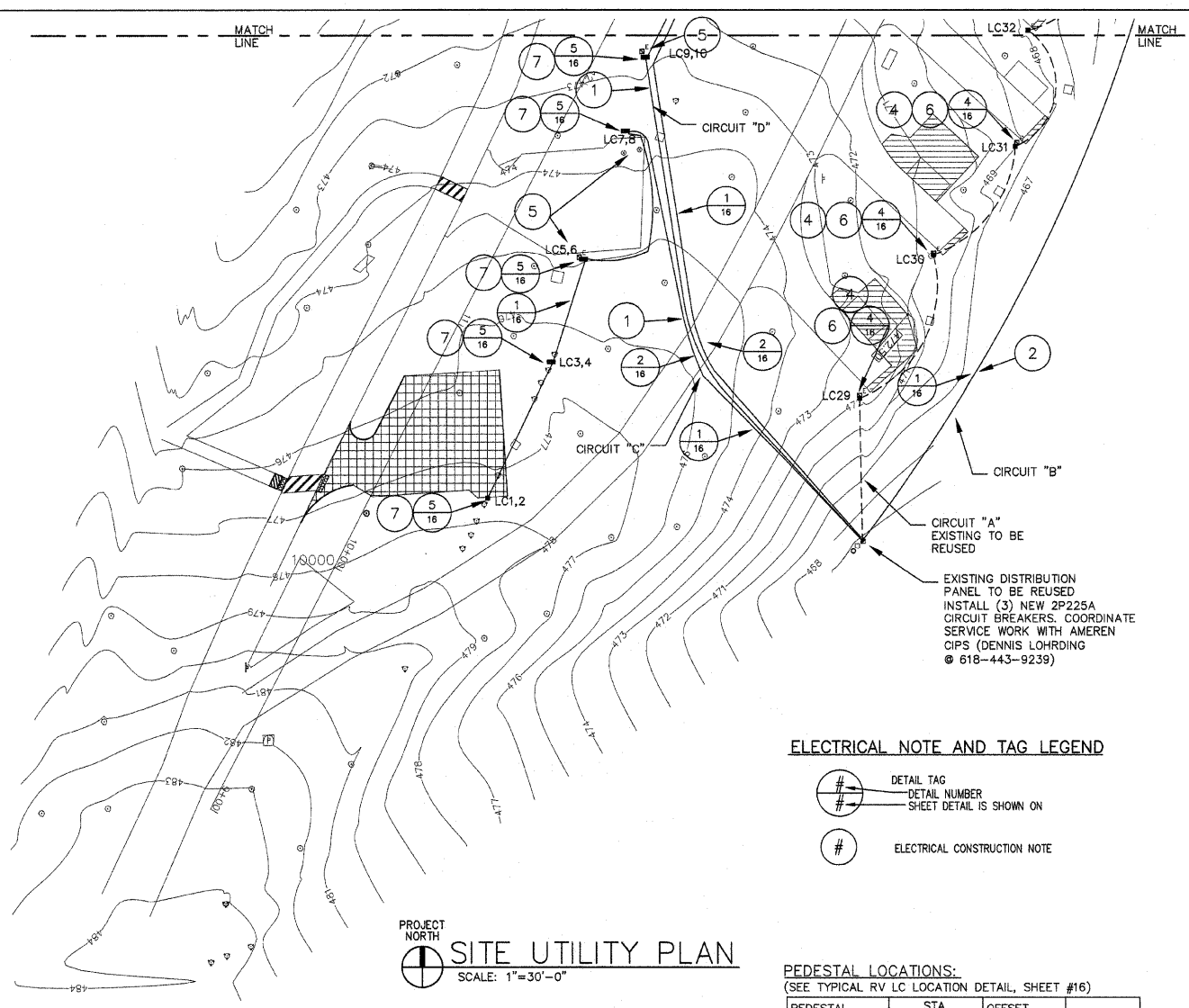
THE BACK, SIDES, AND BOTTOM OF THE FIREBOX SHALL BE 3/16" PLATE STEEL THE FRONT SHALL BE OPEN THE ENTIRE UNIT SHALL BE FINISHED IN HIGH TEMPERATURE, HEAT RESISTANT, NON-TOXIC BLACK ENAMEL

SECTION D-D
NOT TO SCALE

FILE NAME =	USER NAME = #USER#	DESIGNED - T.T.P.	REVISED -	STATE OF ILLINOIS DEPARTMENT OF TRANSPORTATION	DETAILS PIERRE MENARD/FORT KASKASKIA STATE HISTORIC SITE			F.A. RTE.	SECTION	COUNTY	TOTAL SHEETS	SHEET NO.
#FILE#		DRAWN - S.D.K.	REVISED -		SCALE:	SHEET NO. 12 OF 16 SHEETS	STA.	TO STA.	TANDALPH	16	12	
		CHECKED - R.H.D.	REVISED -						CONTRACT NO. 46003			
		DATE - 8/24/09	REVISED -						ILLINOIS FED. AID PROJECT			



PROJECT NORTH
 SITE UTILITY PLAN
 SCALE: 1"=30'-0"



PROJECT NORTH
 SITE UTILITY PLAN
 SCALE: 1"=30'-0"

EXISTING DISTRIBUTION PANEL TO BE REUSED
 INSTALL (3) NEW 2P225A CIRCUIT BREAKERS. COORDINATE SERVICE WORK WITH AMEREN CIPS (DENNIS LOHRING @ 618-443-9239)

ELECTRICAL NOTE AND TAG LEGEND

- DETAIL TAG
- DETAIL NUMBER SHEET DETAIL IS SHOWN ON
- ELECTRICAL CONSTRUCTION NOTE

PEDESTAL LOCATIONS:

(SEE TYPICAL RV LC LOCATION DETAIL, SHEET #16)

PEDESTAL I.D.	STA.	OFFSET	
		RIGHT	LEFT
LC1,2	10+47.67	40.17000	
LC3,4	11+3.17	37.25000	
LC5,6	X		
LC7,8	11+91.08	22.08000	
LC9,10	12+18.92	16.42000	
LC11,12	12+62.92	16.17000	
LC13,14	13+10.67	13.17000	
LC15,16	13+59.25	6.58000	
LC17,18	14+2.58	10.25000	
LC19,20	14+44.75	14.25000	
LC21,22	14+79.83	13.50000	
LC23,24	15+32.58	7.50000	
LC25,26			
LC27,28			
LC29	X		
LC30	X		
LC31	X		
LC32	X		
LC33	X		
LC34	X		
LC35	X		
LC36	X		
LC37	X		
LC38	X		
LC39	X		
LC40	X		

X - PEDESTAL LOCATION WILL REMAIN UNCHANGED FIELD COORDINATE

TAGGED ELECTRICAL CONSTRUCTION NOTES:(APPLY TO THIS SHEET ONLY)

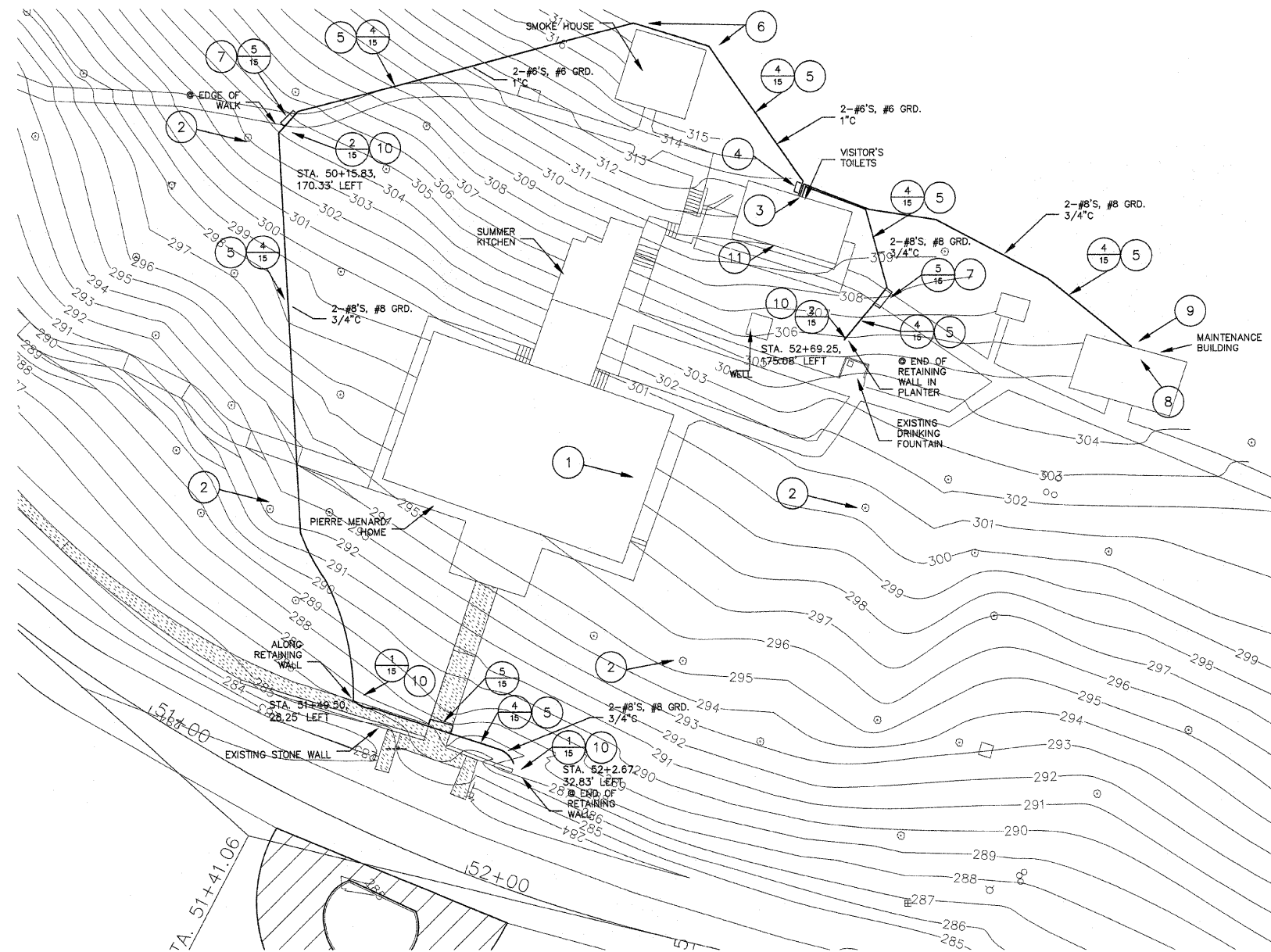
- 1) PROVIDE NEW FEEDER CIRCUIT, 3-#4/0, #2/0 GRD. DIRECT BURIED CABLE. CABLE SHALL BE AL TYPE USE, RHW-2 INSTALL AT MINIMUM 30" BELOW GRADE, SEE TRENCHING DETAILS. ORIGINATING FROM A 2P225A CIRCUIT BREAKER INSTALLED IN THE EXISTING SQUARE D, I-LINE SERVICE PANEL.
- 2) PROVIDE NEW FEEDER CIRCUIT, PARALLEL (2-SETS) 3-#4/0, #2/0 GRD. DIRECT BURIED CABLE. CABLE SHALL BE AL TYPE USE, RHW-2 INSTALL AT MINIMUM 30" BELOW GRADE, SEE TRENCHING DETAILS. ORIGINATING FROM A 2P225A CIRCUIT BREAKER INSTALLED IN THE EXISTING SQUARE D, I-LINE SERVICE PANEL.
- 3) EXISTING CONDUCTORS TO BE CUT OFF 3' CLEAR OF ALL NEW EQUIPMENT AND ABANDONED IN PLACE. THE COST OF THIS WORK, INCLUDING ALL LABOR, EQUIPMENT AND MATERIAL, SHALL BE INCLUDED IN THE "TRENCH AND BACKFILL FOR ELECTRICAL WORK" PAY ITEM.
- 4) REMOVE EXISTING PEDESTAL AND RETURN TO OWNER. PROTECT CONNECTED UNDERGROUND CONDUCTORS FOR REUSE. EXISTING PEDESTALS SHALL BE PACKAGE AS APPROVED BY THE ENGINEER. ALL DAMAGE CAUSED BY THE REMOVAL AND/OR TRANSPORTATION SHALL BE REPAIRED OR REPLACED IN KIND TO THE SATISFACTION OF THE ENGINEER. THE COST OF THIS WORK, INCLUDING ALL LABOR, EQUIPMENT AND MATERIAL, SHALL BE INCLUDED IN THE "POWER DISTRIBUTION CENTER, PEDESTAL MOUNT" PAY ITEM.
- 5) REMOVE EXISTING PEDESTAL AND RETURN TO OWNER, EXISTING CONDUCTORS TO BE CUT OFF 3' CLEAR OF ALL NEW EQUIPMENT AND ABANDONED IN PLACE. EXISTING PEDESTALS SHALL BE PACKAGE AS APPROVED BY THE ENGINEER. ALL DAMAGE CAUSED BY THE REMOVAL AND/OR TRANSPORTATION SHALL BE REPAIRED OR REPLACED IN KIND TO THE SATISFACTION OF THE ENGINEER. THE COST OF THIS WORK, INCLUDING ALL LABOR, EQUIPMENT AND MATERIAL, SHALL BE INCLUDED IN THE "POWER DISTRIBUTION CENTER, PEDESTAL MOUNT" PAY ITEM.
- 6) INSTALL NEW SINGLE PEDESTAL IN SAME LOCATION AS EXISTING, MODIFY EXISTING WIRING AS REQUIRED AND CONNECT TO NEW PEDESTAL. THE COST OF THIS WORK, INCLUDING ALL LABOR, EQUIPMENT AND MATERIAL, SHALL BE INCLUDED IN THE "POWER DISTRIBUTION CENTER, PEDESTAL MOUNT" PAY ITEM.
- 7) INSTALL NEW DOUBLE PEDESTAL IN LOCATION INDICATED, THE COST OF THIS WORK, INCLUDING ALL LABOR, EQUIPMENT AND MATERIAL, SHALL BE INCLUDED IN THE "POWER DISTRIBUTION CENTER, PEDESTAL MOUNT" PAY ITEM.

FILE NAME =	USER NAME = \$USER\$	DESIGNED -	REVISED - 7/20/09
\$FILE\$		DRAWN - D.M.U.	REVISED - 8/24/09
	PLOT SCALE = \$SCALE\$	CHECKED -	REVISED -
	PLOT DATE = \$DATE\$	DATE - 3/10/08	REVISED -

STATE OF ILLINOIS
 DEPARTMENT OF TRANSPORTATION

PIERRE MENARD HOME/
 KASKASKIA STATE PARK CAMPGROUND

SCALE: 1"=30'	SHEET NO. 13 OF 16 SHEETS	STA. _____ TO STA. _____	F.A. RTE.	SECTION	COUNTY	TOTAL SHEETS	SHEET NO.
					RANDOLPH	16	13
			CONTRACT NO. 46003				
			FED. ROAD DIST. NO. ILLINOIS FED. AID PROJECT				



PROJECT NORTH
SITE UTILITY PLAN
 SCALE: 1"=20'-0"

ELECTRICAL NOTE AND TAG LEGEND

DETAIL TAG
 DETAIL NUMBER
 SHEET DETAIL IS SHOWN ON

ELECTRICAL CONSTRUCTION NOTE

FIXTURE, AND
 BASE AS DETAILED

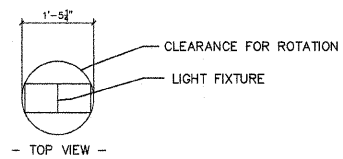
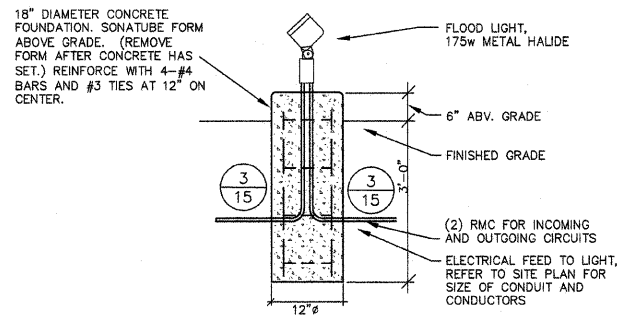
GENERAL ELECTRICAL CONSTRUCTION NOTES:

- 1) CONTRACTOR SHALL CUT AND PATCH AS REQUIRED DURING THE COURSE OF INSTALLATION OR AS SPECIFIED ON THE DRAWINGS.
- 2) ALL NEW ELECTRICAL WORK SHALL BE INSTALLED IN ACCORDANCE WITH THE LATEST EDITION OF THE NATIONAL ELECTRICAL CODE AND ALL OTHER LOCAL, STATE AND NATIONAL CODES WHICH APPLY AS INTERPRETED I.D.O.T..
- 3) ALL WORK IS TO BE COORDINATED WITH ALL OTHER TRADES ON THIS PROJECT AND ELECTRICAL WORK INSTALLED IN A NEAT AND ORDERLY FASHION.
- 4) THE ELECTRICAL DRAWINGS ARE SCHEMATIC AND SHOW THE GENERAL ARRANGEMENT OF EQUIPMENT, THE DRAWINGS SHALL NOT BE SCALED TO DETERMINE EQUIPMENT CONNECTION OR ROUGH-IN. REFER TO EQUIPMENT CUT-SHEETS AND RESPONSIBLE TRADES.
- 5) ALL CONDUCTORS OF THE ELECTRICAL SYSTEM SHALL BE COPPER, 600V, XLP - TYPE USE. CONDUCTORS FOR DIRECT BURIAL TO SERVE RV PEDESTALS SHALL BE ALUMINUM, RHW-2, TYPE USE.
- 6) ALL CONDUIT SHALL BE MINIMUM 3/4" TRADE SIZE, IMC WHEN INSTALLED INDOORS IN DRY LOCATIONS, RMC WHEN INSTALLED OUTDOOR OR INDOORS IN DAMP/WET LOCATIONS, RMC, LFNC WHEN EXPOSED OUTDOORS AND, RMC OR RNC-40 WHEN INSTALLED IN CONCRETE OR BELOW GRADE. FINAL CONNECTIONS TO ALL EQUIPMENT, WHICH PRODUCE VIBRATION SHALL BE WITH FLEXIBLE NON-METALLIC CONDUIT SUITABLE FOR THE SURROUNDING ENVIRONMENT. CONDUIT TURNING UP FROM BELOW GRADE OR FROM WITHIN CONCRETE SHALL BE RMC.
- 7) RACEWAY FILL, WHEN RACEWAY SIZE IS NOT SPECIFICALLY INDICATED, SHALL BE BASED ON APPLICABLE ARTICLES OF THE NEC.
- 8) CIRCUIT ROUTING, IN GENERAL, IS NOT SPECIFIED UNLESS SPECIFIC REQUIREMENTS EXIST, ROUTING OF CIRCUITS WILL HAVE EFFECTS ON CIRCUIT VOLTAGE DROPS. CONTRACTOR SHALL COORDINATE ROUTING LENGTH WITH CONNECTED LOAD AND ADJUST CONDUCTOR SIZE FOR A VOLTAGE DROP LESS THAN 3%.
- 9) ALL CONDUITS SHALL BE INSTALLED CONCEALED IN SPACES OF NEW CONSTRUCTION, WHICH ARE TYPICALLY OCCUPIED. CONTRACTOR SHALL COORDINATE THE LOCATION OF ALL EQUIPMENT WITH EXISTING CONDITIONS TO MAINTAIN ACCESS REQUIRED BY THE N.E.C. AND EQUIPMENT MANUFACTURERS.
- 10) SERVICE VOLTAGE AND ELECTRICAL REQUIREMENTS OF ALL EQUIPMENT SHALL BE VERIFIED BY THE CONTRACTOR PRIOR TO ELECTRICAL ROUGH-IN. DISCREPANCIES BETWEEN THE ELECTRICAL DRAWINGS AND EQUIPMENT REQUIREMENTS SHALL BE REPORTED TO THE ENGINEER BEFORE ANY ASSOCIATED WORK IS INSTALLED.
- 11) INDEXES OF ELECTRICAL PANELS SHALL BE REVISED TO REFLECT COMPLETED WORK.
- 12) CONTRACTOR SHALL REFERENCE THE PROJECT SITE PLANS FOR ELECTRIC, TELEPHONE, CABLE T.V. AND ALL OTHER UTILITIES. EXECUTION OF NEW WORK SHALL BE COMPLETED TO AVOID AND PROTECT EXISTING UTILITIES. ANY DAMAGE TO EXISTING UTILITIES AS THE RESULT OF THIS PROJECT SHALL BE REPAIRED OR REPLACED BY THE CONTRACTOR AT NO COST TO THE DEPARTMENT.
- 13) THIS FACILITY WILL BE IN OPERATION DURING CONSTRUCTION, ALL OPEN EXCAVATION SHALL BE BARRICADED WHEN CONTRACTOR IS NOT PRESENT.
- 14) ALL TRENCHING SHALL MAINTAIN CLEARANCES FROM TREES, SINGLE TREES- TRENCH SHALL NOT PASS UNDER CANOPY, ADJACENT TREES- TRENCH SHALL PASS BETWEEN TREES AT A DISTANCE FROM EACH TREE PROPORTIONAL TO THE RESPECTIVE TREE CANOPY.

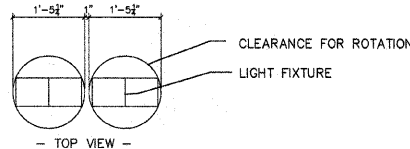
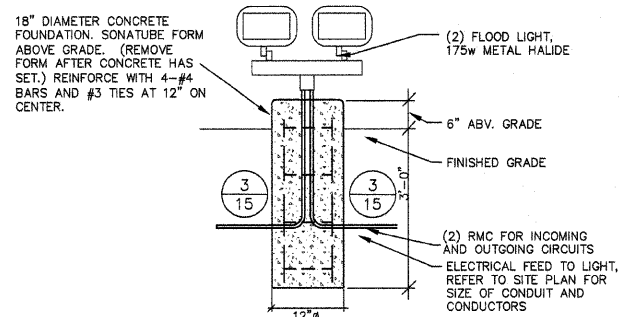
TAGGED ELECTRICAL CONSTRUCTION NOTES:(APPLY TO THIS SHEET ONLY)

- 1) REMOVE EXISTING TIME CLOCK, LOCATED IN BASEMENT, SERVING OUTDOOR BUILDING LIGHTING, PROTECT TO REUSE. REMOVE ALL CIRCUITS CONDUCTORS AND CONDUIT WITHIN BUILDING CURRENTLY SERVING LIGHTING TO BE REMOVED. SEAL CONDUIT END WATERTIGHT AT BUILDING BOUNDARY. LABEL ABANDONED OVERCURRENT DEVICES AS SPARE. THE COST OF THIS WORK, INCLUDING ALL LABOR, EQUIPMENT AND MATERIAL, SHALL BE INCLUDED IN THE "REMOVE EXISTING LIGHTING SYSTEM" PAY ITEM.
- 2) REMOVE EXISTING TREE MOUNT LIGHT FIXTURE, BOXES AND HARDWARE. CARE SHALL BE TAKEN NOT TO DAMAGE TREE. REMOVE BRANCH CIRCUIT CONDUIT AND CONDUCTORS TO 1' BELOW FINISHED GRADE, BACKFILL THE HOLE, AND ABANDON REMAINING CABLE AND CONDUIT. THE COST OF THIS WORK, INCLUDING ALL LABOR, EQUIPMENT AND MATERIAL, SHALL BE INCLUDED IN THE "REMOVE EXISTING LIGHTING SYSTEM" PAY ITEM.
- 3) INSTALL A NEW 1P20A CIRCUIT BREAKER IN THE EXISTING PANEL AND FEED PHOTO CELL AND NEW SITE LIGHTING. INSTALL A 1P20A CIRCUIT BREAKER IN EXISTING PANEL TO SERVE NEW LIGHTS AND RECEPTACLE IN EXISTING MAINTENANCE BUILDING. ALL WORK WITHIN THIS SPACE WILL BE EXPOSED. LOOP SITE LIGHT CIRCUIT THROUGH TIME CLOCK. THE COST OF THIS WORK, INCLUDING ALL LABOR, EQUIPMENT AND MATERIAL, SHALL BE INCLUDED IN THE "LIGHTING SYSTEM COMPLETE" PAY ITEM.
- 4) CIRCUITS SHALL PENETRATE BUILDING WALL (SEAL WATERTIGHT) USING RMC TRANSVERSE SPACE BETWEEN BUILDING AND RETAINING WALL AND PENETRATE RETAINING WALL WALL SHALL BE PATCHED AND REPAIRED TO ORIGINAL CONDITIONS. ONCE AT 24" BELOW GRADE CHANGE TO RNC. THE COST OF THIS WORK, INCLUDING ALL LABOR, EQUIPMENT AND MATERIAL, SHALL BE INCLUDED IN THE APPROPRIATE CONDUIT PAY ITEM.
- 5) PROVIDE TRENCHING, CONDUIT INSTALLATION, BACK FILL AND SURFACE RESTORATION. ALL ROCK SHALL BE REMOVED TO MAINTAINED MINIMUM CONDUIT BURIAL OF 24". ROCK SHALL NOT BE USED FOR BACK FILL WHEN IN CONTACT WITH CONDUIT OR PLACE ON SURFACE. ROUTING OF CONDUITS SHALL AVOID TREE ROOTS WHEN POSSIBLE. THE COST OF THIS WORK, INCLUDING ALL LABOR, EQUIPMENT AND MATERIAL, SHALL BE INCLUDED IN THE "TRENCH AND BACKFILL FOR ELECTRICAL WORK" PAY ITEM.
- 6) CONDUITS SHALL BE ROUTED TO AVOID BUILDING FOUNDATIONS.
- 7) INSTALLATION OF CONDUIT UNDER SIDEWALKS SHALL BE COMPLETE SO AS NOT TO DISTURB SIDEWALK. EXCAVATE ON BOTH SIDES, JACK OR DRIVE SLEEVE UNDER SIDEWALK. SIDEWALKS SHALL NOT BE ALTERED IN ANYWAY. DAMAGE TO SIDEWALKS WILL BE REPAIR WITH LIKE MATERIALS TO MATCH EXISTING IN COLOR AND TEXTURE AT THE CONTRACTORS EXPENSE. THE COST OF THIS WORK, INCLUDING ALL LABOR, EQUIPMENT AND MATERIAL, SHALL BE INCLUDED IN THE APPROPRIATED CONDUIT PAY ITEM.
- 8) CONTRACTOR SHALL FURNISH AND INSTALL (2) FLUORESCENT FIXTURE EVENLY SPACE WITH IN THE BUILDING ON THE BOTTOM OF THE ROOD TRUSS, FIXTURES SHALL BE LITHONIA CAT.# EJS 2 32 120 GEB, OR APPROVED EQUAL, WITH ELECTRONIC BALLAST AND WIRE GUARDS. CONTROL LIGHT WITH WALL SWITCH ADJACENT TO DOOR. INSTALL TWO GFI DUPLEX RECEPTACLE ONE ON EACH INTERIOR SUPPORT POSTS. ALL CONDUIT WITHIN BUILDING SHALL BE IMC SURFACE MOUNTED EXPOSED. THE COST OF THIS WORK, INCLUDING ALL LABOR, EQUIPMENT AND MATERIAL, SHALL BE INCLUDED IN THE "LIGHTING SYSTEM COMPLETE" PAY ITEM.
- 9) RISE FROM BELOW GRADE WITH RMC AND L.B. INTO BUILDING, SEAL PENETRATION WATERTIGHT. THE COST OF THIS WORK, INCLUDING ALL LABOR, EQUIPMENT AND MATERIAL, SHALL BE INCLUDED IN THE APPROPRIATED CONDUIT PAY ITEM.
- 10) INSTALL NEW FIXTURE(S) AND FOUNDATIONS AS DETAILED.
- 11) INSTALL NEW PHOTO CELL WITH VIEW WESTERN HORIZON, LOOP OUTSIDE LIGHTING CIRCUIT SO AS TO CONTROL BASED ON AMBIENT OUTDOOR SUN LIGHT. THE COST OF THIS WORK, INCLUDING ALL LABOR, EQUIPMENT AND MATERIAL, SHALL BE INCLUDED IN THE "LIGHTING SYSTEM COMPLETE" PAY ITEM.

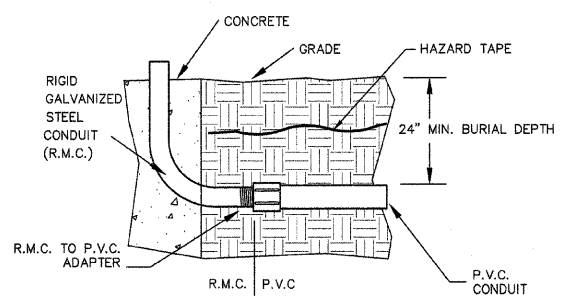
FILE NAME =	USER NAME = \$USER\$	DESIGNED =	REVISED = 7/8/09	STATE OF ILLINOIS DEPARTMENT OF TRANSPORTATION	PIERRE MENARD HOME/ KASKASKIA STATE PARK CAMPGROUND		F.A. RTE.	SECTION	COUNTY	TOTAL SHEETS	SHEET NO.
\$FILES\$		DRAWN = D.M.U.	REVISED = 8/24/09		SCALE: 1"=20'	SHEET NO. 15 OF 16 SHEETS	STA. _____ TO STA. _____		RANDOLPH	16	14
		CHECKED =	REVISED =								
		PLOT DATE = \$DATE\$	DATE = 3/10/08								
							CONTRACT NO. 46003		ILLINOIS FED. AID PROJECT		



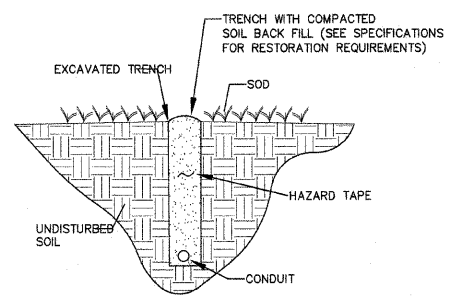
1 TYPICAL FLOOD LIGHTING MOUNTING DETAIL
NONE



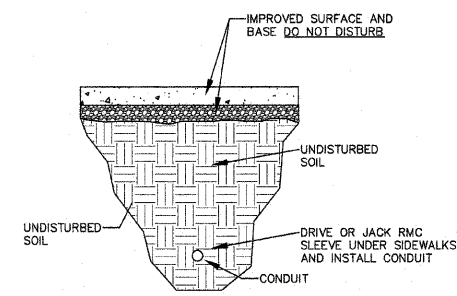
2 TYPICAL DUAL FLOOD LIGHTING MOUNTING DETAIL
NONE



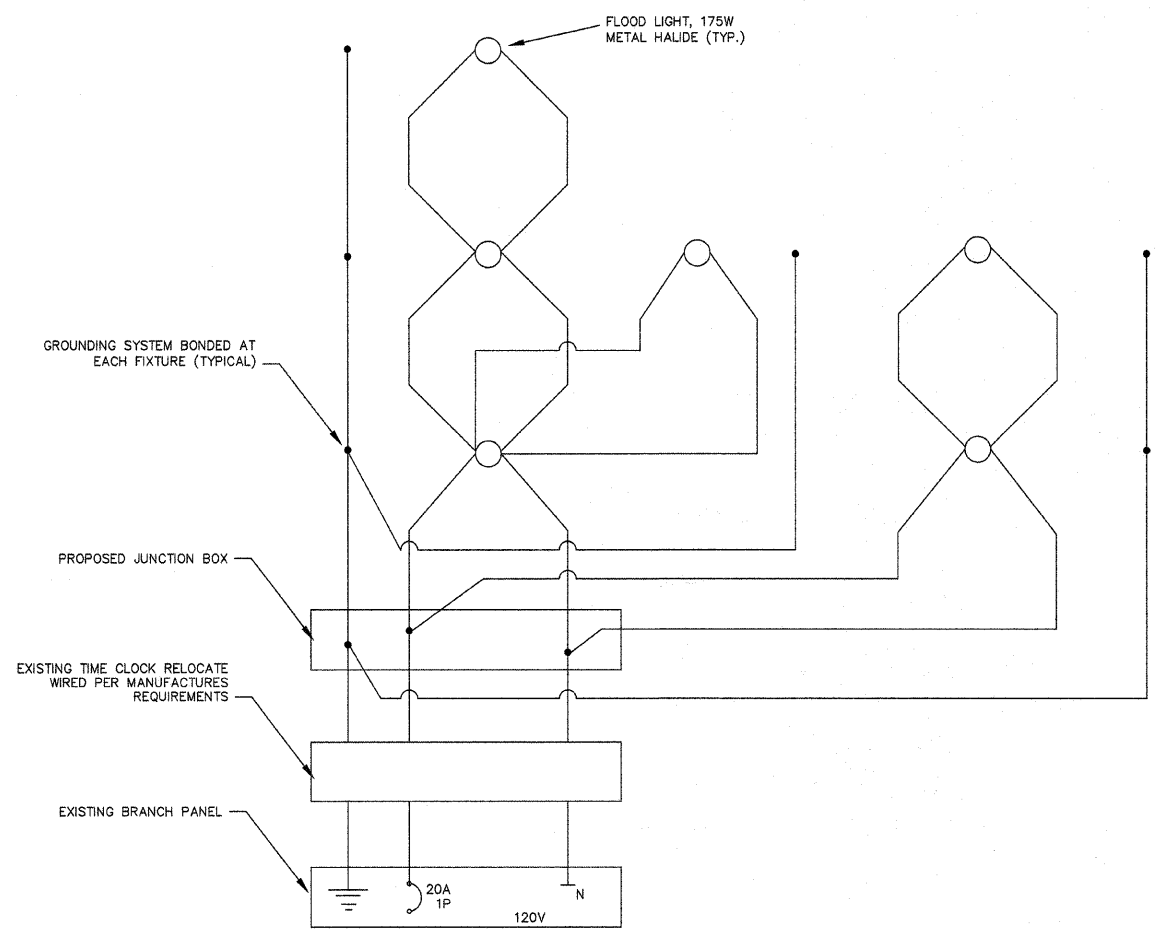
3 TYPICAL CONDUIT TRANSITION DETAIL
NONE



4 TYPICAL OPEN TRENCH CONDUIT DETAIL
NONE

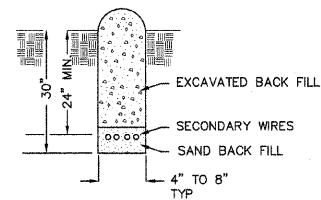


5 TYPICAL DRIVEN CONDUIT DETAIL
NONE



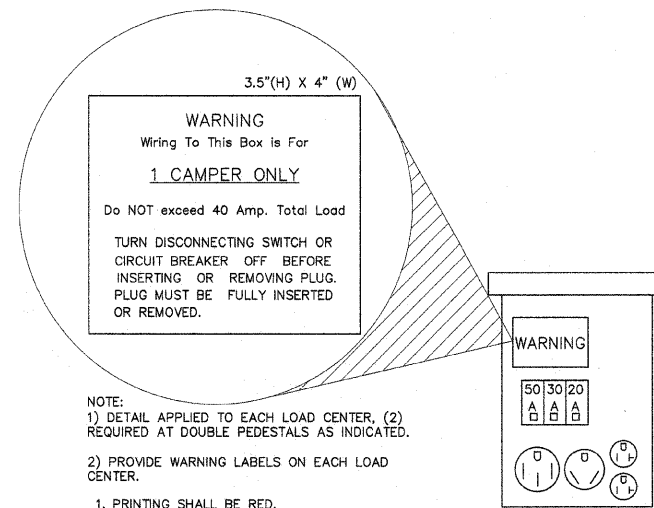
FLOOD LIGHT CIRCUIT DIAGRAM
NONE

FILE NAME = \$FILE\$	USER NAME = \$USER\$	DESIGNED -	REVISED - 7/8/09	STATE OF ILLINOIS DEPARTMENT OF TRANSPORTATION	PIERRE MENARD HOME/ KASKASKIA STATE PARK CAMPGROUND	F.A. RTE.	SECTION	COUNTY	TOTAL SHEETS	SHEET NO.	
		DRAWN - D.M.U.	REVISED - 8/24/09					RANDOLPH	16	15	
		CHECKED -	REVISED -			CONTRACT NO. 46003					
		DATE - 3/10/08	REVISED -			ILLINOIS FED. AID PROJECT					
		PLOT SCALE = \$SCALE\$		SCALE: 1"=20'	SHEET NO. 15 OF 16 SHEETS	STA. _____	TO STA. _____				
		PLOT DATE = \$DATE\$									



- NOTES**
- SAND OR OTHER GRANULAR MATERIAL SHALL SURROUND ALL WIRES.
 - WIRE PLOW OR DIRECTIONAL BORE ARE ACCEPTABLE ALTERNATES TO TRENCHING, WHERE ONLY FINE GRAIN SOIL WILL BE ENCOUNTERED.

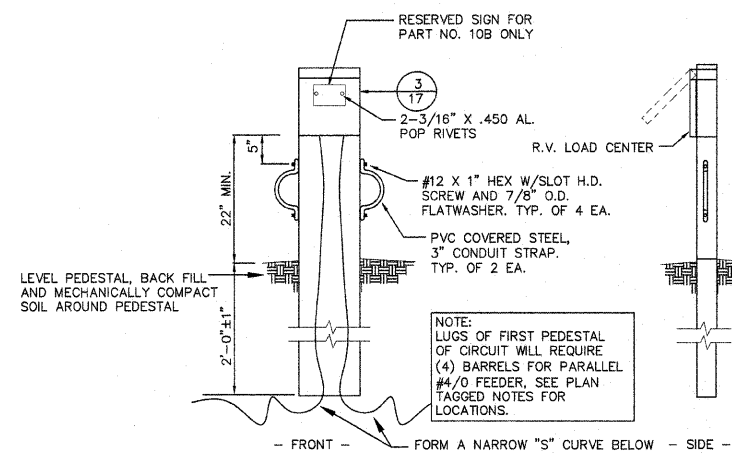
1
16
TYPICAL WIRE TRENCH DETAIL
NO SCALE



- NOTE:**
- DETAIL APPLIED TO EACH LOAD CENTER, (2) REQUIRED AT DOUBLE PEDESTALS AS INDICATED.
 - PROVIDE WARNING LABELS ON EACH LOAD CENTER.

- PRINTING SHALL BE RED.
- LABEL MATERIAL SHALL BE WHITE SCOTCH LITE REFLECTIVE SHEETING. (3M #3290 OR EQUIVALENT)
- AFTER PRINTING, COAT WITH 3M #730 OR EQUIVALENT CLEAR COATING.

3
16
TYPICAL LOAD CENTER CONFIGURATION
NO SCALE

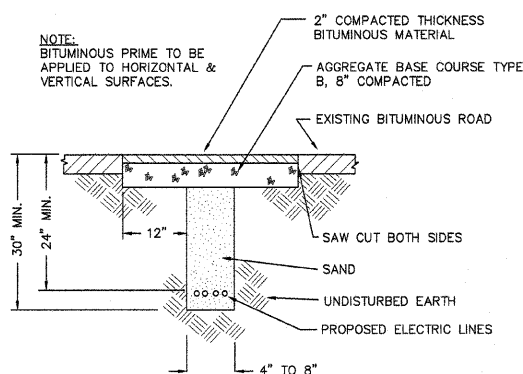


NOTE:
NEW SINGLE RV LOAD CENTER TYPE PEDESTAL WITH 20 AMP., 30 AMP. AND 50 AMP. RECEPTACLES IN A NEMA 3R ENCLOSURE SUPPORTED BY MANUFACTURED PEDESTAL. ALL 20 AMP. AND 30 AMP. RECEPTACLES TO BE 125V, 2P, 3W GROUNDED TYPE. 50 AMP. RECEPTACLES TO BE 125/250V, 3P, 4W GROUNDED TYPE. RESERVED SIGN SHALL BE 5" X 7" X 0.090" ALUM. PLATE, WITH WHITE BACKGROUND AND RED LETTERS.

NOTE:
LUGS OF FIRST PEDESTAL OF CIRCUIT WILL REQUIRE (4) BARRELS FOR PARALLEL #4/0 FEEDER, SEE PLAN TAGGED NOTES FOR LOCATIONS.

FORM A NARROW "S" CURVE BELOW GRADE IN CONDUCTORS TO ALLOW FOR MOVEMENT. PROVIDE PROTECTION AGAINST ABRASION.

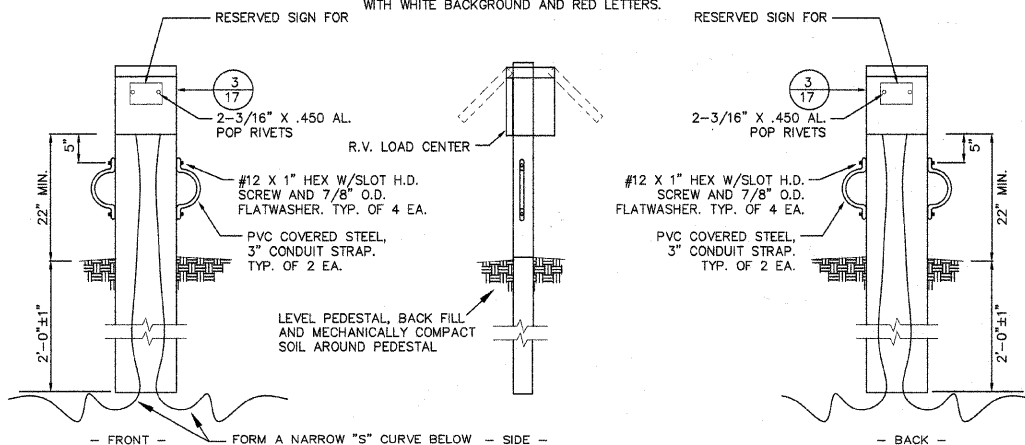
4
16
SINGLE SITE LOAD CENTER PEDESTAL DETAIL
NO SCALE



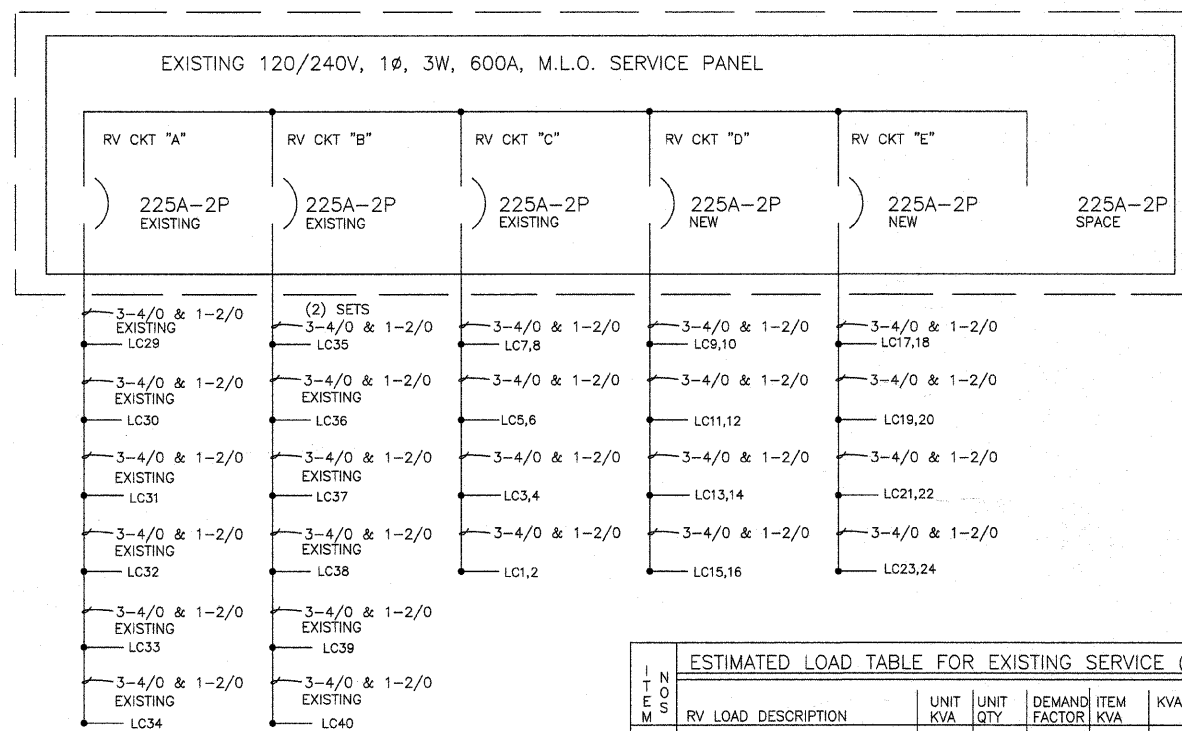
NOTE:
BITUMINOUS PRIME TO BE APPLIED TO HORIZONTAL & VERTICAL SURFACES.

2
16
BITUMINOUS SURFACE ROAD CROSSING
NO SCALE

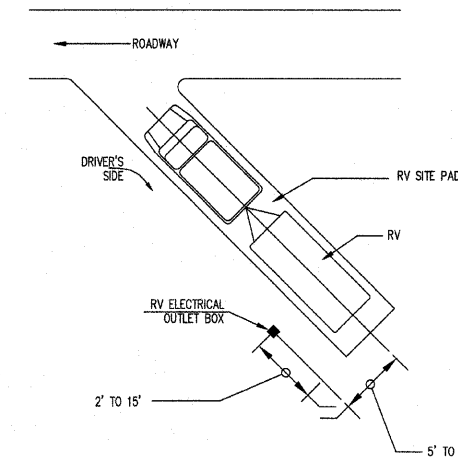
NOTE:
NEW DOUBLE RV LOAD CENTER TYPE PEDESTAL WITH 20 AMP., 30 AMP. AND 50 AMP. RECEPTACLES IN A NEMA 3R ENCLOSURE SUPPORTED BY MANUFACTURED PEDESTAL. ALL 20 AMP. AND 30 AMP. RECEPTACLES TO BE 125V, 2P, 3W GROUNDED TYPE. 50 AMP. RECEPTACLES TO BE 125/250V, 3P, 4W GROUNDED TYPE. RESERVED SIGN SHALL BE 5" X 7" X 0.090" ALUM. PLATE, WITH WHITE BACKGROUND AND RED LETTERS.



5
16
DOUBLE SITE LOAD CENTER PEDESTAL DETAIL
NO SCALE



RISER DIAGRAM
NO SCALE



TYPICAL RV LC LOCATION DETAIL
NO SCALE

ESTIMATED LOAD TABLE FOR EXISTING SERVICE (1Ø, 120/240V)						
ITEM NO.	RV LOAD DESCRIPTION	UNIT KVA	UNIT QTY	DEMAND FACTOR	ITEM KVA	ITEM PROTECTION
1	CIRCUIT "A"	9600	6	60%	34560	225
2	CIRCUIT "B"	9600	6	60%	34560	225
3	CIRCUIT "C"	9600	8	55%	42240	225
4	CIRCUIT "D"	9600	8	55%	42240	225
5	CIRCUIT "E"	9600	8	55%	42240	225
EXISTING SERVICE LOAD			36	41%	141696	590.4

FILE NAME =	USER NAME = \$USER\$	DESIGNED =	REVISED = 7/8/09
\$FILE\$		DRAWN = D.M.U.	REVISED = 8/24/09
	PLOT SCALE = \$SCALE\$	CHECKED =	REVISED =
	PLOT DATE = \$DATE\$	DATE = 3/10/08	REVISED =

STATE OF ILLINOIS
DEPARTMENT OF TRANSPORTATION

PIERRE MENARD HOME/
KASKASKIA STATE PARK CAMPGROUND

SCALE: 1"=20' SHEET NO. 16 OF 16 SHEETS STA. _____ TO STA. _____

F.A. RTE.	SECTION	COUNTY	TOTAL SHEETS	SHEET NO.
		RANDOLPH	16	16
CONTRACT NO. 46003				
FED. ROAD DIST. NO. - ILLINOIS FED. AID PROJECT				