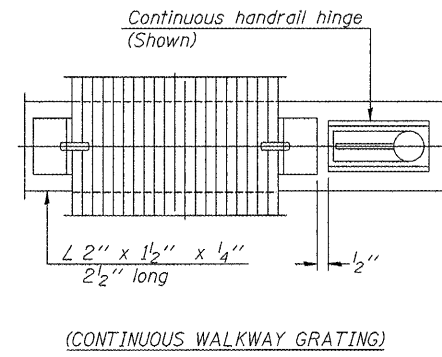
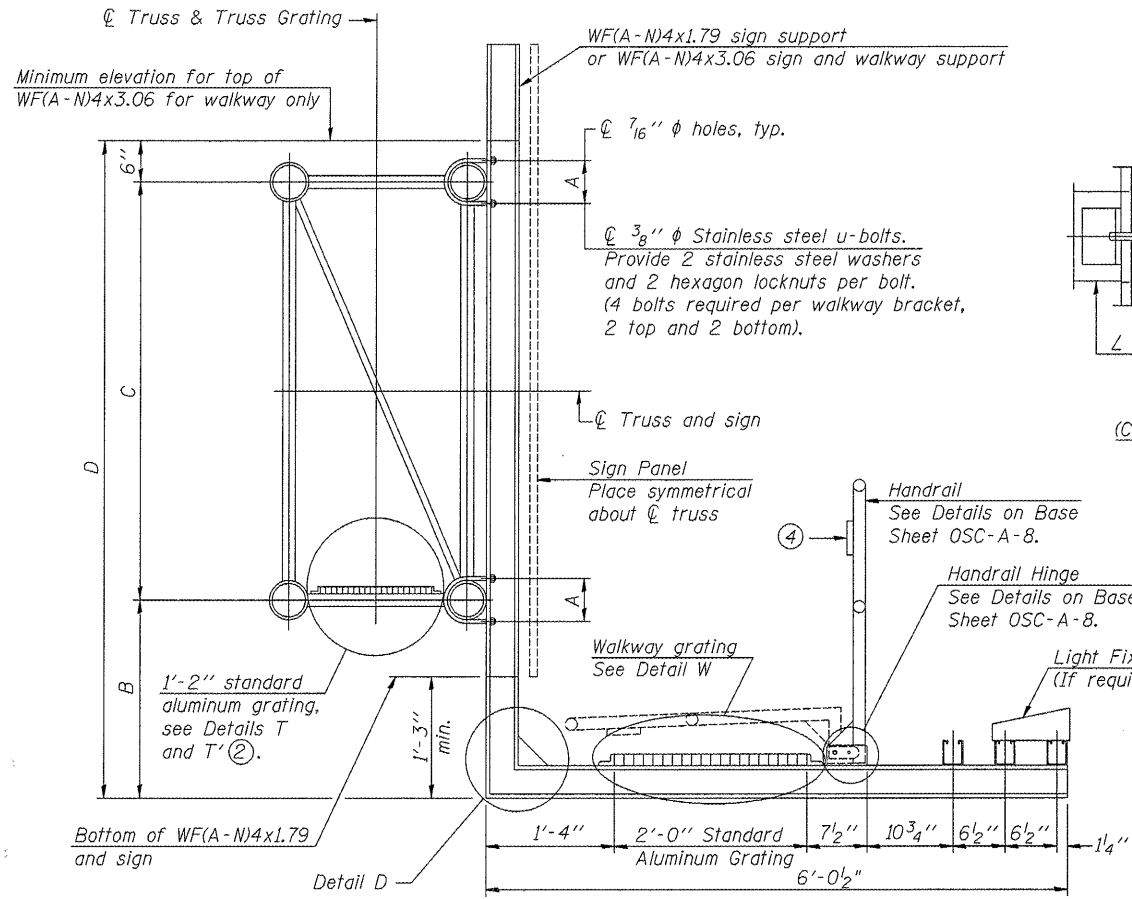


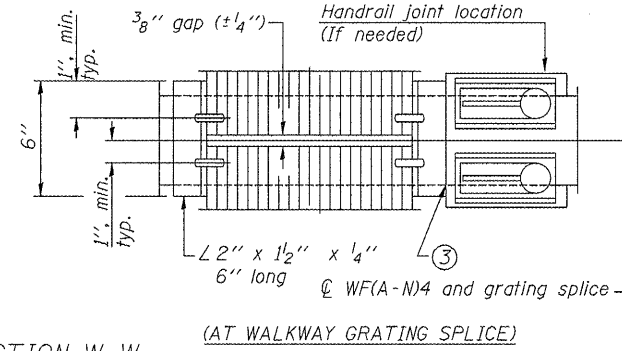
SPECIFICATIONS FOR STANDARD ALUMINUM GRATING

Main Bearing Bars (MBB) shall be $\frac{3}{16}'' \times 1\frac{1}{2}''$ on $1\frac{3}{16}''$ centers and conform to ASTM B221 Alloy 6061-T6.
Cross bars (CB) shall be $\frac{3}{16}'' \times 1\frac{1}{2}''$ on 4" centers and conform to ASTM B221 Alloy 6063-T5 or 6061-T6.

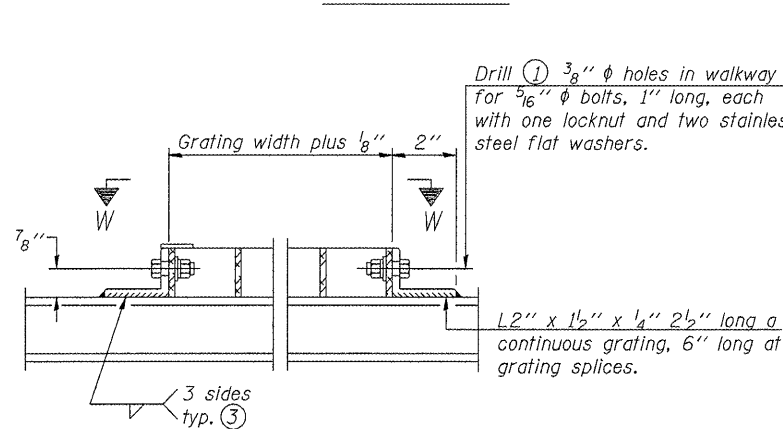
OR
Aluminum Grating with modified "I" sections for main bearing bars shall meet the following requirements:
Main bars shall conform to ASTM B221 Alloy 6061-T6 and have a minimum section modulus equal to 0.0705 in.³ per bar, a depth of 1 $\frac{1}{2}$ ", spaced on $1\frac{3}{16}''$ centers.
Cross bars shall conform to ASTM B221 Alloy 6063-T5 or T-42 and spaced on 4" centers.



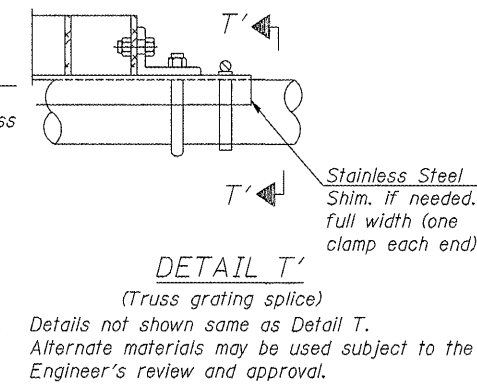
SECTION W-W



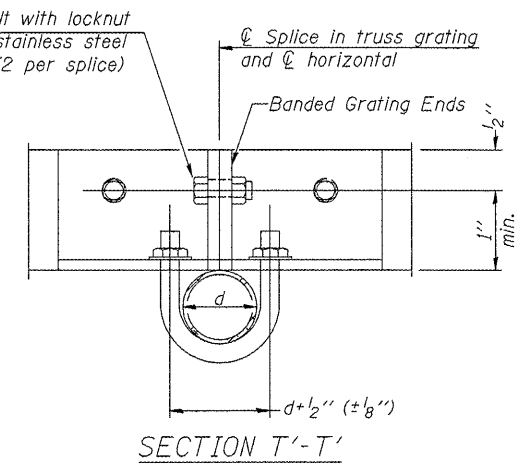
SECTION W-W (AT WALKWAY GRATING SPLICE)



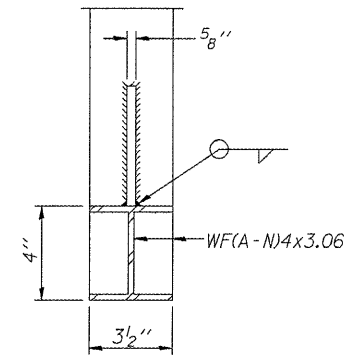
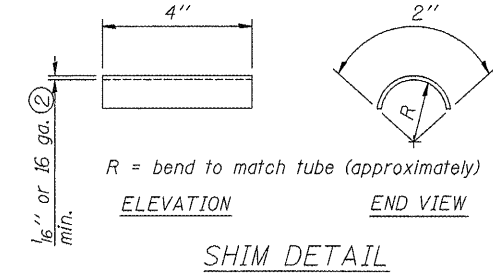
DETAIL W (Walkway grating)



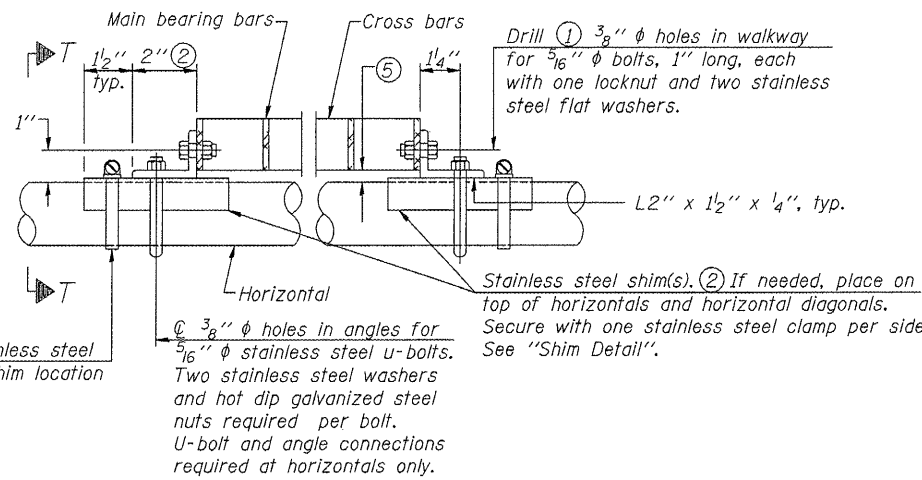
DETAIL T' (Truss grating splice)



SECTION T'-T'



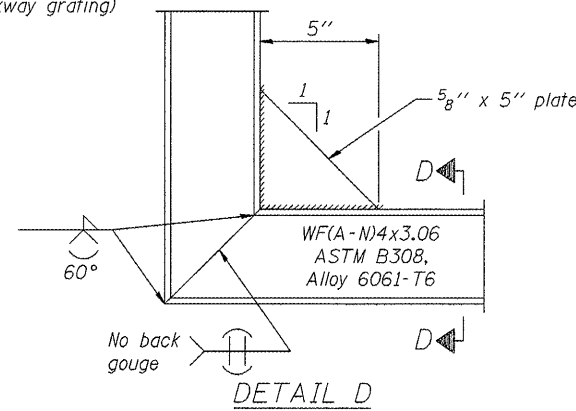
SECTION D-D Screw type stainless steel tube clamp at shim location



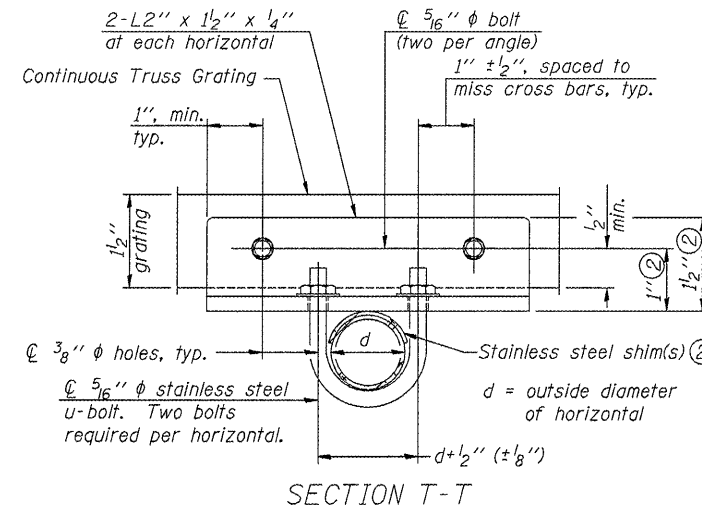
DETAIL T

(Continuous Truss grating)

- Drilling holes in grating may be done in shop or field, based on Contractor's preference and subject to accurate alignment.
- Stainless steel shims shall be placed as shown in Detail T if needed to compensate for alignment variations between horizontal and diagonal pipes beyond adjustment provided by angles. Thicker shims may be used subject to shims performing properly.
- If Handrail Joint present, weld angle to WF(A-N)4 and $\frac{1}{4}''$ extension bars. (See Base Sheet OSC-A-8.)
- L $\frac{1}{8}'' \times \frac{1}{2}'' \times 2''$ welded to handrail posts to protect locations that contact grating.
- Tube to grating gap may vary from 0 to $\frac{1}{2}''$, max. to align walkway, allow for camber, etc.



DETAIL D



SECTION T-T

Structure Number	Station	A	B	C	D

This Sheet For Information Only

CANTILEVER SIGN STRUCTURES
WALKWAY DETAILS
ALUMINUM TRUSS & STEEL POST

District 5
Overhead Sign
Structure Replacement

NUMBER	REVISION	DATE

DESIGNED -	20
CHECKED -	EXAMINED
DRAWN -	PASSED
CHECKED -	ENGINEER OF BRIDGES AND STRUCTURES