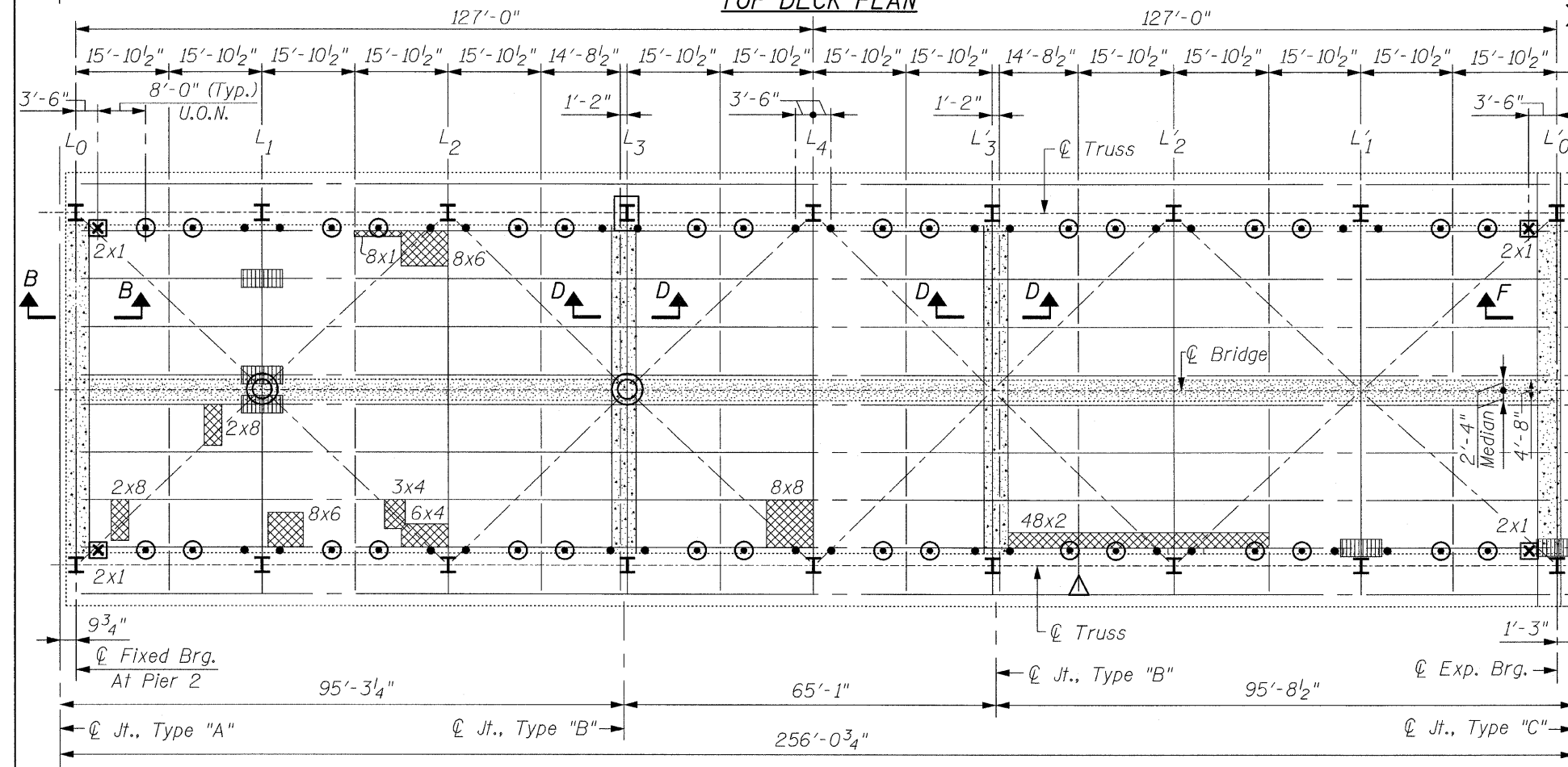


TOP DECK PLAN



**BOTTOM DECK PLAN
SPAN 3**

NOTES:
 For details of Longitudinal Joint Reconstruction, See Sht's. S7 & S8.
 For details of Transverse Joint Reconstruction, See Sht's. S9 thru S15.
 For details of removal & replacement of bottom lateral gusset plates, See Detail "C", Sht. S17.
 For Section B-B See Sht. S9.
 For Section D-D See Sht. S10.
 For Section F-F See Section S13.
 For Welded Clip Angle Connections to be replaced with bolted connections, See Detail "B" See Sht. S17.
 For Floor Drain Extensions, See Sht. S16.
 For details of removal & replacement of Tie Rods, See Detail "D", Sht. S17.
 Work this Sheet with Sht's. S4 & S5.
 For end of Beam repairs, see Detail "E", Sht. S17.

LEGEND:

- ⊗ Existing Floor Drains to be removed with Deck Slab Repair (Full Depth, Type I) Patches
- * * Existing Floor Drains
- * * Floor Drain Extensions
- ▨ Deck Slab Repair (Partial Depth)
- ▩ Deck Slab Repair (Full Depth, Type I or II)
- ▤ Longitudinal Joint Reconstruction (Stage I)
- ▥ Transverse Joint Reconstruction
- ▧ End of Beam Repair
- △ Remove Welded Clip Angle Connections & Replace with Bolted Connections
- Remove & Replace Bottom Lateral Gusset Plates
- I Remove & Replace Tie Rods
- U.O.N. Unless Otherwise Noted

* * The Existing Floor Drains that will not be removed (including drains with Floor Drain Extensions) have connections welded to the Girders. These connections shall be removed & replaced with Bolted Connections. See Sht. S16.

NOTE:
 Protective Shield is to be placed beneath Longitudinal Joint Reconstruction, Transverse Joint Reconstruction and Deck Slab Repair (Full Depth, Type I & II). Protective Shield shall span between Beams transversely and a minimum of 2 Feet on either side of the Reconstruction Area longitudinally. The Contractor shall submit detailed Shop Drawings to the Engineer for approval prior to constructing the Protective Shield.

NOTE:
 The Locations of Deck Slab Repairs, as shown on this Plan, are from the most recent Survey that was performed in November, 2007

* Deck Slab Repair (Partial Depth) is shown for Information Only

**TOTAL BILL OF MATERIAL
(FOR SPANS 1 THRU 4)**

Item	Unit	Total
Deck Slab Repair (Full Depth, Type I)	Sq. Yd.	5
Deck Slab Repair (Full Depth, Type II)	Sq. Yd.	89
Protective Shield	Sq. Yd.	750

FILE NAME = deck_repair_span_3.dgn
 PLOT DATE = 7/8/2009

CHRISTIAN-ROGE & ASSOCIATES, INC.
 ENGINEERS-PLANNERS-SURVEYORS
 211 WEST WACKER DRIVE
 CHICAGO, ILLINOIS 60606
 PHONE: (312)372-2023 FAX: (312)372-5274

DESIGNED - B.N.S./J.C.N.
 DRAWN - D.L./R.E.S./F.M.
 CHECKED - B.N.S./J.C.N.
 DATE - JULY 8, 2009

**STATE OF ILLINOIS
DEPARTMENT OF TRANSPORTATION**

**DECK CONCRETE PATCHING - SPAN 3 (TOP & BOTTOM)
KEDZIE AVENUE OVER CAL-SAG CHANNEL S.N. 016-0762**

F.A.U. RTE. 2831 SECTION 1313. 1-1-2 COUNTY COOK TOTAL SHEETS 41 SHEET NO. 15 CONTRACT NO. 60D75
 FED. ROAD DIST. NO. 1 | ILLINOIS | FED. AID PROJECT